

Fig. S1

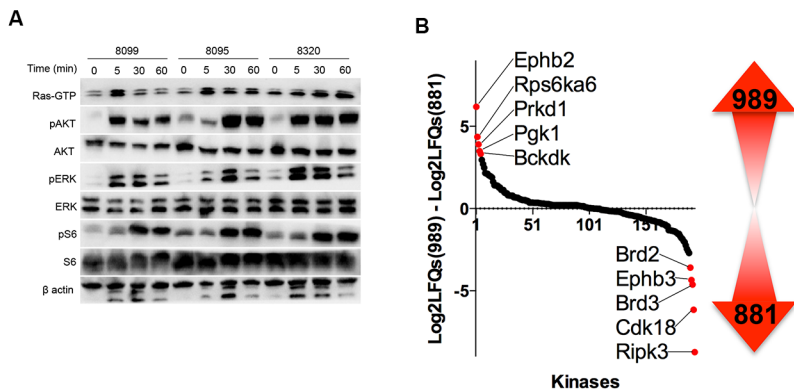


Fig. S1 A. Ras activation varies among serum-stimulated *Nf1* mutant tumor cell lines. *Nf1* mutant cell lines were serum starved for 24 hours, then stimulated with medium plus FBS. Whole cell lysates of tumor cells were collected at 0, 5, 30 and 60 minutes after stimulation and RAS-GTP pull-down was performed. Immunoblotting for phospho-specific antibodies against activated Ras effectors AKT (S473), S6 (Ser235/236) and p44/42 MAPK (ERK1/2) (Thr202/Tyr204) was performed. β actin was used as loading control. **B.** MIB-binding of kinases from parental cell lines 989 and 881 growing in standard conditions were compared to each other. The difference in Log₂LFQs (989 - 881) for each kinase is plotted; the five kinases demonstrating the greatest differences in MIB between cell lines are highlighted.