

Fig.S4

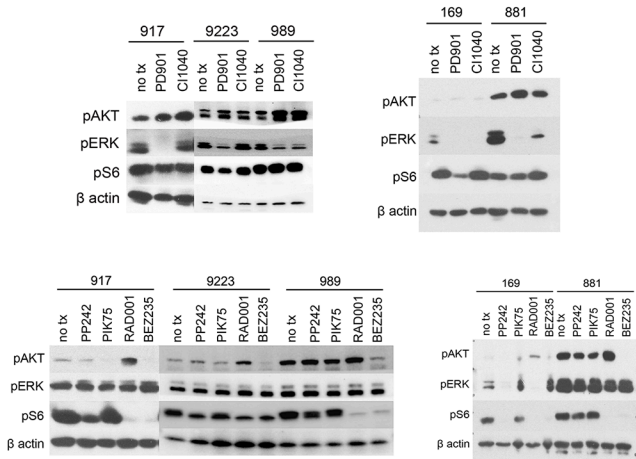


Fig. S4 *Nf1* mutant cell lines demonstrate variable responses to kinase inhibition. To assess and compare tumor cell response when functioning at a signaling level that is intermediate between full serum and full starvation, *Nf1* mutant cells were serum starved for two hours, then treated with PD901 (an ATP non-competitive MEK inhibitor), CI1040 (an ATP non-competitive MEK inhibitor), PP242 (an ATP-competitive mTOR inhibitor), PIK75 (PI3K inhibitor), RAD001 (a rapalog mTOR inhibitor) RAD001, or BEZ235 (dual PI3K/mTOR inhibitor) for two hours. Blots demonstrate that *Nf1* mutant tumor cells have variable sensitivities to targeted agents. β actin was used as loading control.