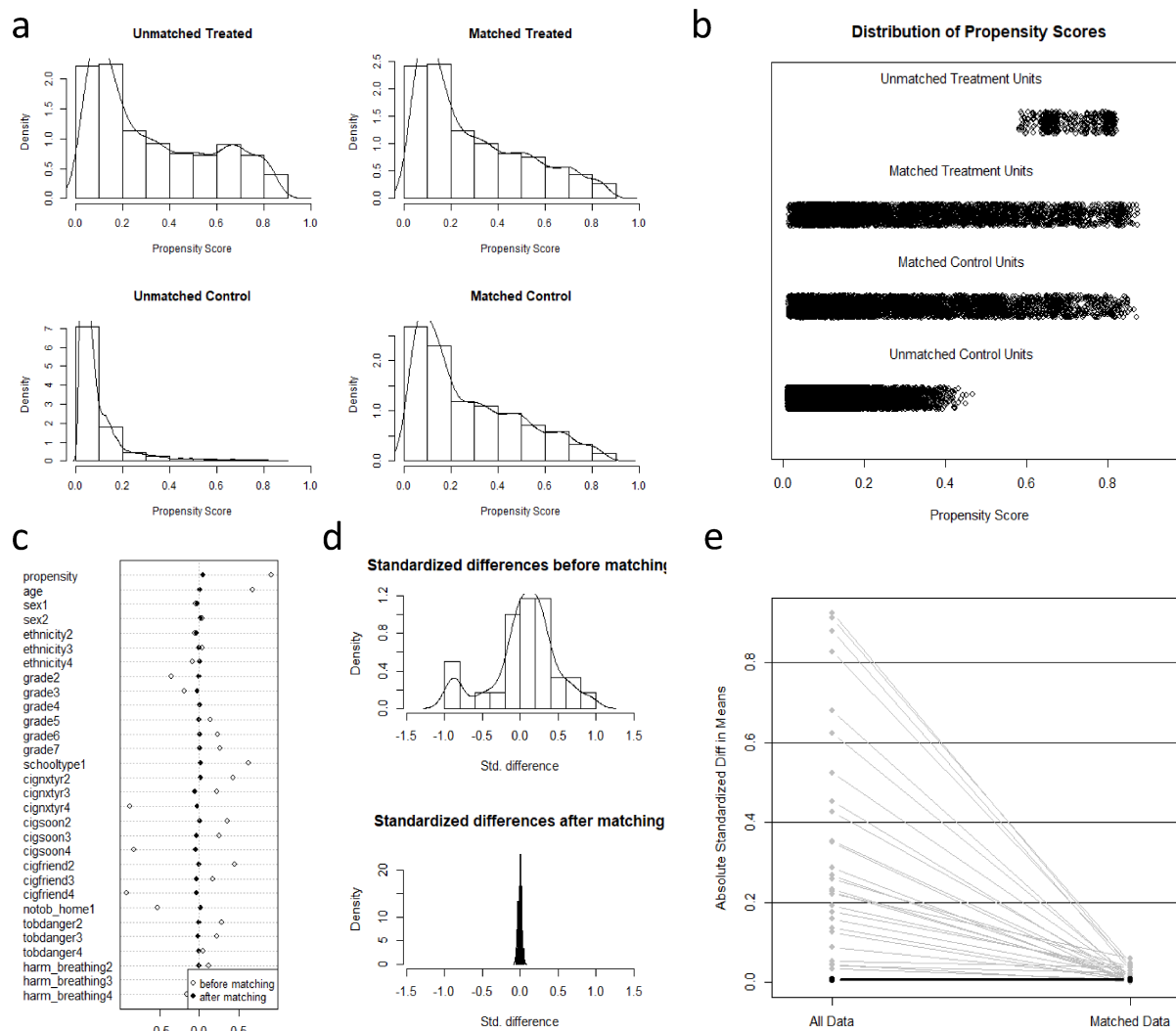


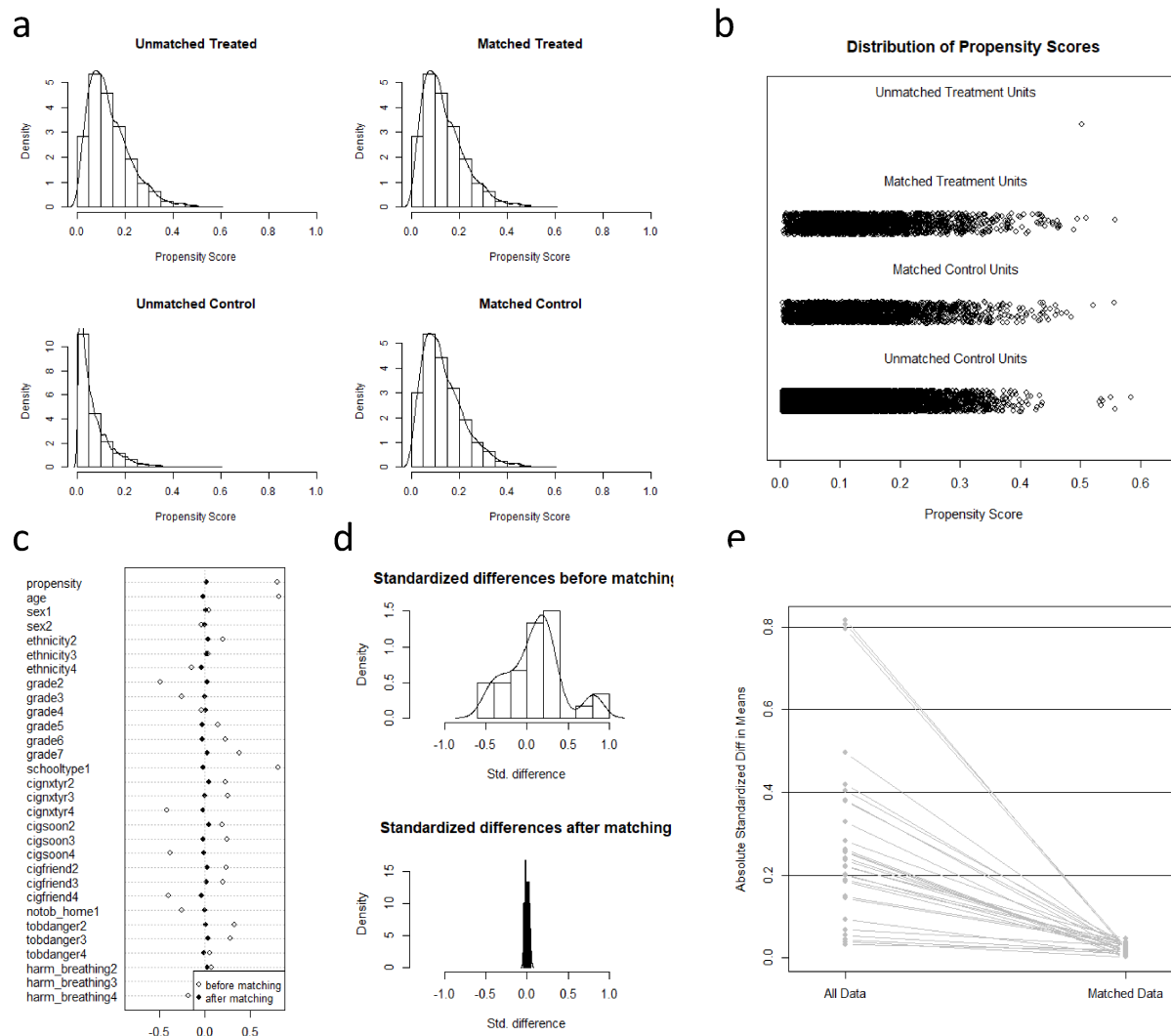
1 Supplementary Figures

2  
 3 Figure S1 (a) Distribution of propensity scores of adolescents in 2014/2015 who used cigarettes first  
 4 (treated) and those who did not (control) before and after matching overlaid kernel density estimate; (b)  
 5 dotplot of adolescents in either matched or unmatched groups; (c) dotplot of standardized mean differences  
 6 (Cohen's *d*) for all covariates before and after matching; (d) histograms with overlaid kernel density  
 7 estimates of standardized differences before and after matching; (e) lineplot of standardized  
 8 differences before and after matching (bold: standardized differences that increase after matching)

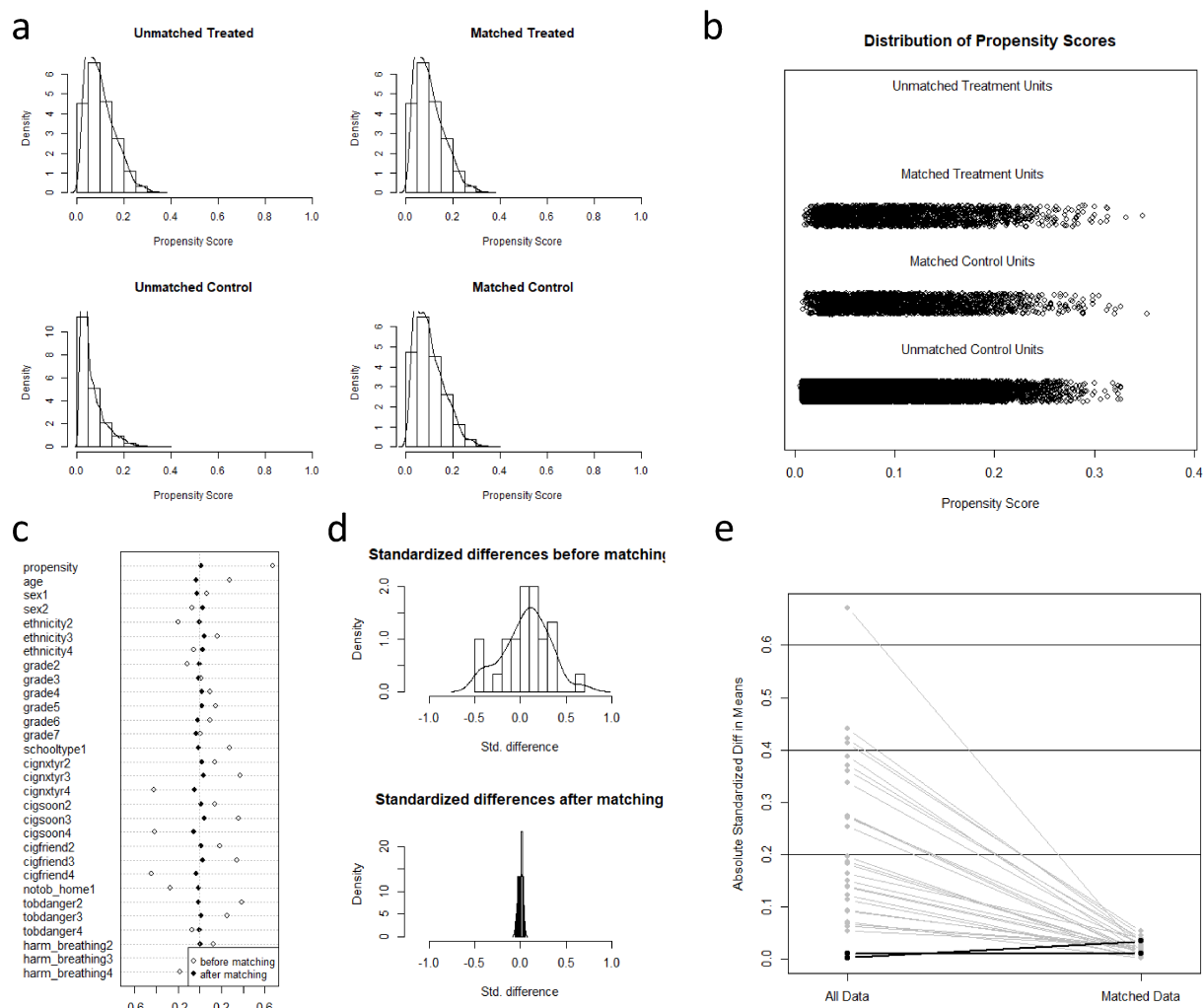
9  
 10



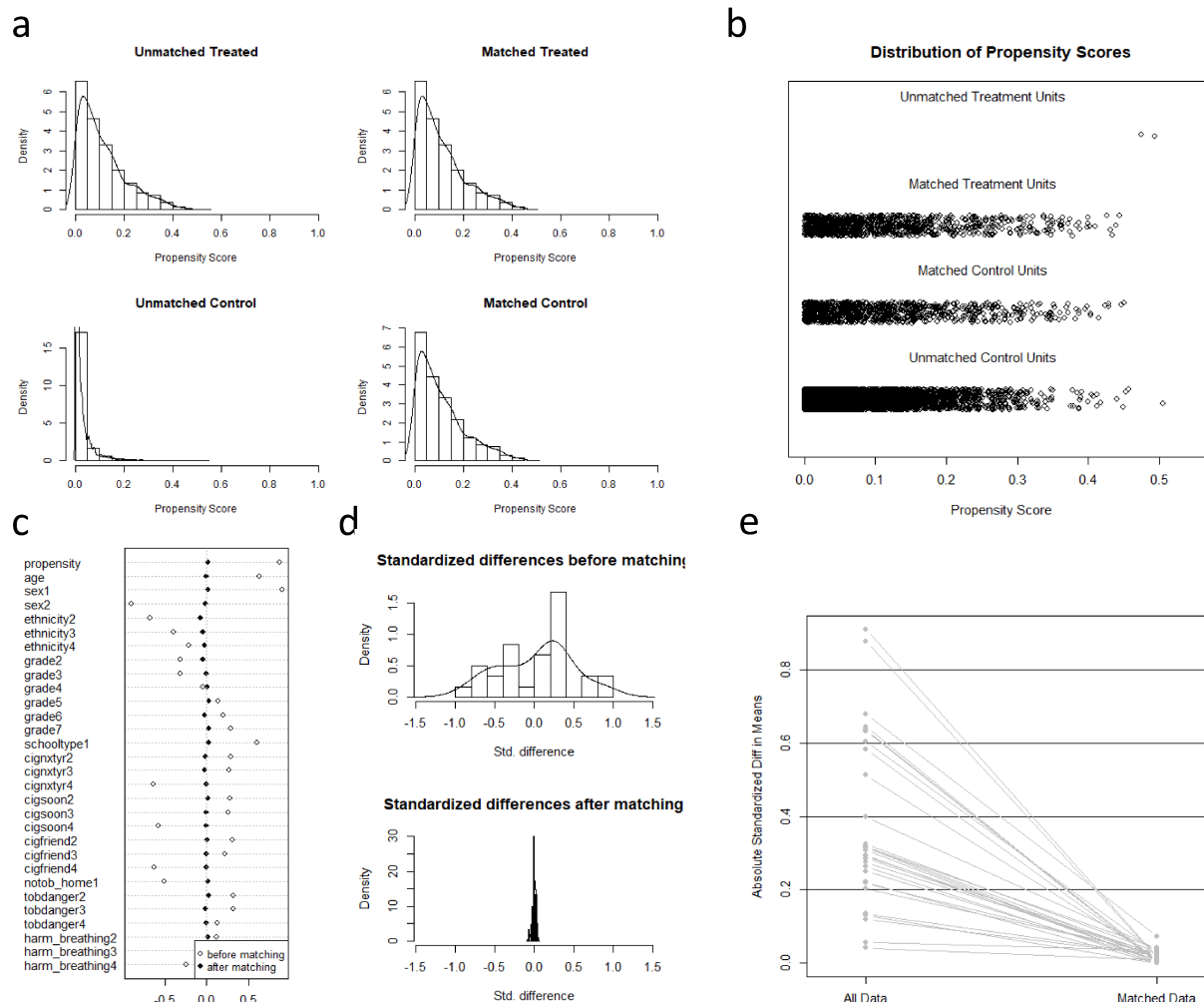
11 Figure S2 (a) Distribution of propensity scores of adolescents in 2014/2015 who used other combustible  
 12 tobacco product first (treated) and those who did not (control) before and after matching overlaid kernel  
 13 density estimate; (b) dotplot of adolescents in either matched or unmatched groups; (c) dotplot of  
 14 standardized mean differences (Cohen's *d*) for all covariates before and after matching; (d) histograms with  
 15 overlaid kernel density estimates of standardized differences before and after matching; (e) lineplot of  
 16 standardized differences before and after matching (bold: standardized differences that increase after  
 17 matching)  
 18  
 19



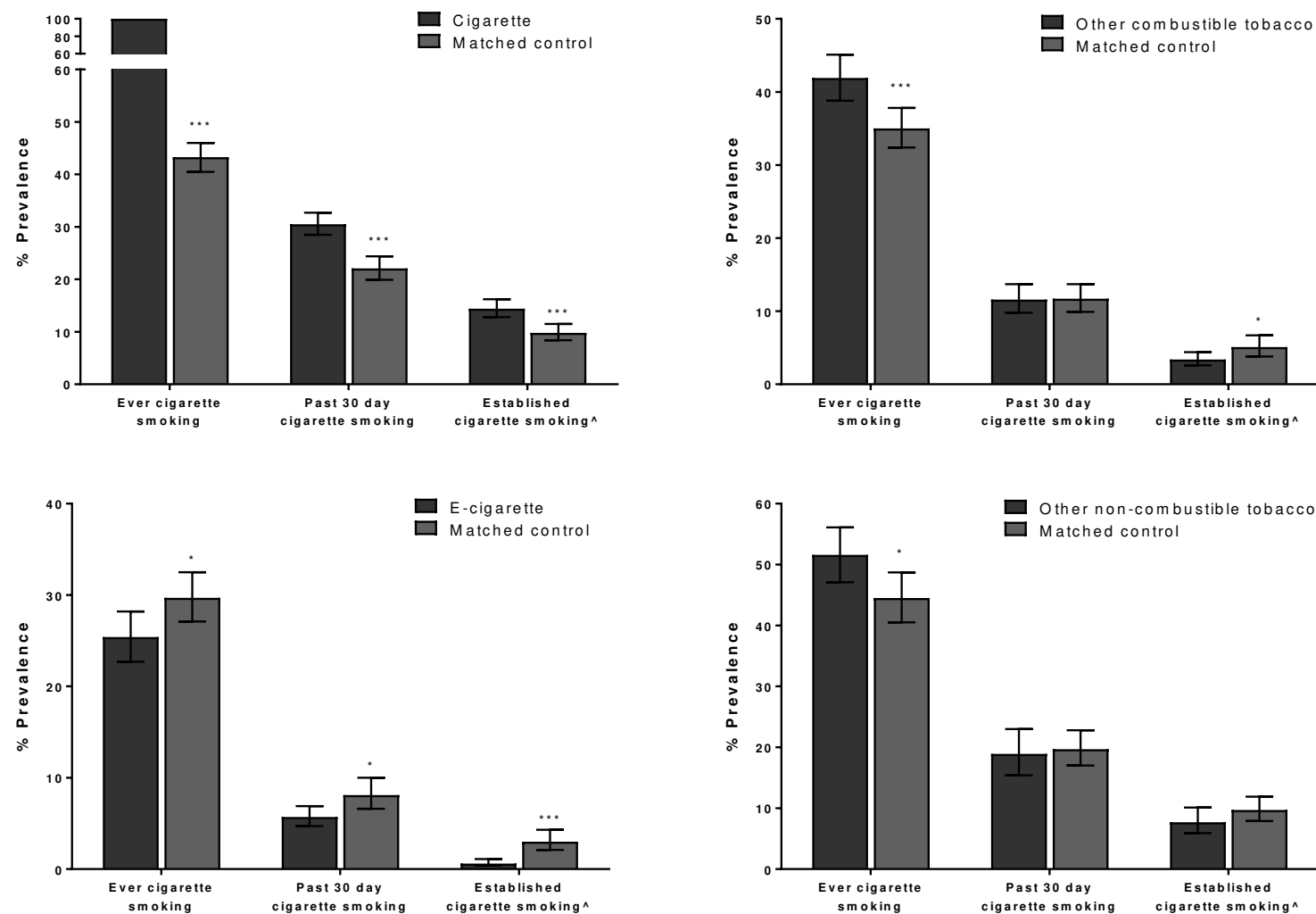
20 Figure S3 (a) Distribution of propensity scores of adolescents in 2014/2015 who used e-cigarette first  
 21 (treated) and those who did not (control) before and after matching overlaid kernel density estimate; (b)  
 22 dotplot of adolescents in either matched or unmatched groups; (c) dotplot of standardized mean differences  
 23 (Cohen's *d*) for all covariates before and after matching; (d) histograms with overlaid kernel density  
 24 estimates of standardized differences before and after matching; (e) lineplot of standardized  
 25 differences before and after matching (bold: standardized differences that increase after matching)  
 26  
 27



28 Figure S4 (a) Distribution of propensity scores of adolescents in 2014/2015 who used other non-combustible  
 29 tobacco product first (treated) and those who did not (control) before and after matching overlaid kernel  
 30 density estimate; (b) dotplot of adolescents in either matched or unmatched groups; (c) dotplot of  
 31 standardized mean differences (Cohen's *d*) for all covariates before and after matching; (d) histograms with  
 32 overlaid kernel density estimates of standardized differences before and after matching; (e) lineplot of  
 33 standardized differences before and after matching (bold: standardized differences that increase after  
 34 matching)  
 35



36 Figure S5: Prevalence of cigarette use by first product tried and propensity score matched controls selected from all four waves (2014-2017)



37  
 38 Error bars are 95%CI; \*\*\*P<0.001; \*P<0.05; ^Smoking in past 30 days and at least 100 cigarettes in lifetime  
 39