

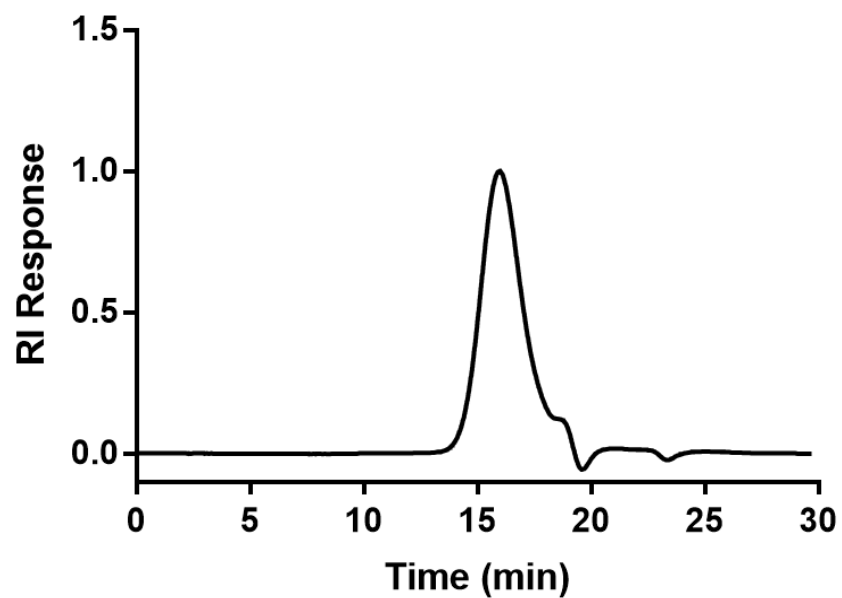
## Supplementary Materials

**Table S1.** Summary of composition, molecular weight ( $M_n$ ), and molar mass dispersity ( $\mathcal{D}$ ) for the polymeric ciprofloxacin prodrug. Mannose monomer: mannosylated ethyl methacrylate. Drug monomer:

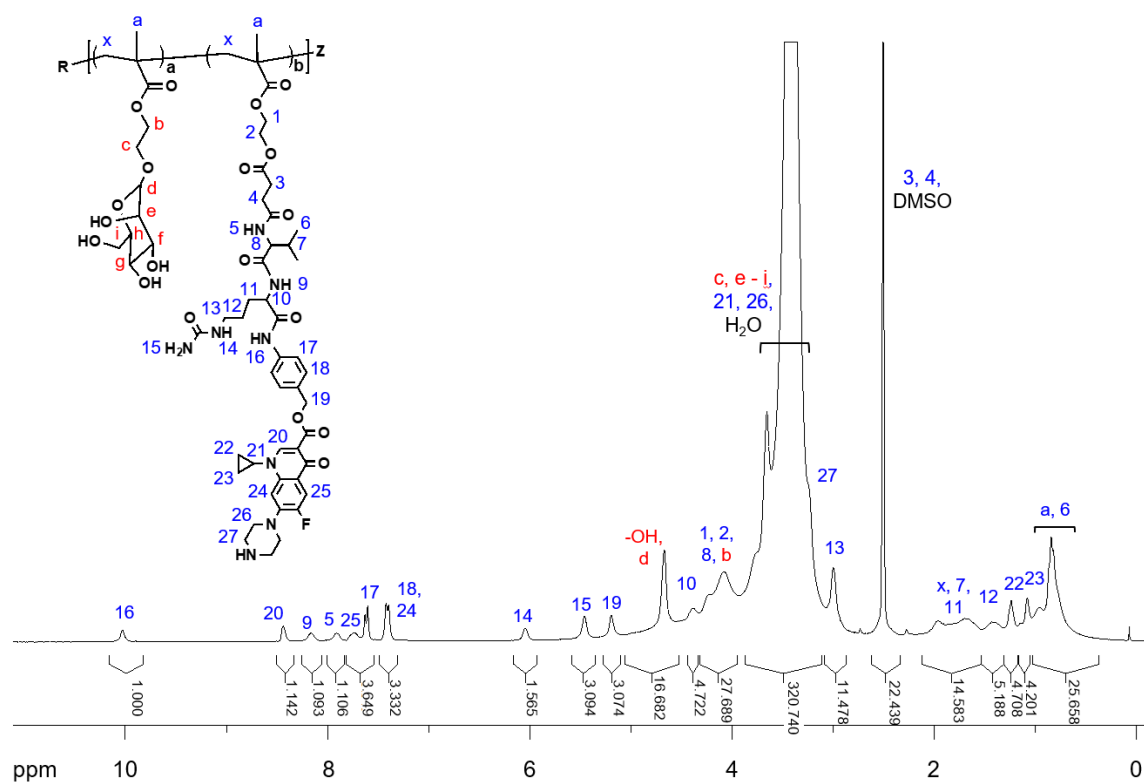
<b>Mannose monomer (feed)</b>	<b>Mannose monomer* (exp)</b>	<b>Drug monomer (feed)</b>	<b>Drug monomer* (exp)</b>	<b><math>M_n^\dagger</math> (kDa)</b>	<b><math>\mathcal{D}^\dagger</math></b>	<b>Drug* (wt%)</b>	ciprofloxacin prodrug methacrylate monomer.
mol.%	mol.%	mol.%	mol.%				
85	88.41	15	11.59	24.2	1.087	10.56	

\*As determined by  $^1\text{H-NMR}$  spectrum in  $\text{DMSO-d}_6$  using a Boc-protected ciprofloxacin as an internal standard

$^\dagger$ As determined by size exclusion chromatography



**Fig. S1.** Representative size exclusion chromatography (SEC) of polymer ciprofloxacin prodrug. RI: refractive index.



**Fig. S2.** Representative <sup>1</sup>H-NMR (300 MHz, DMSO-d<sub>6</sub>) of polymeric ciprofloxacin prodrug.