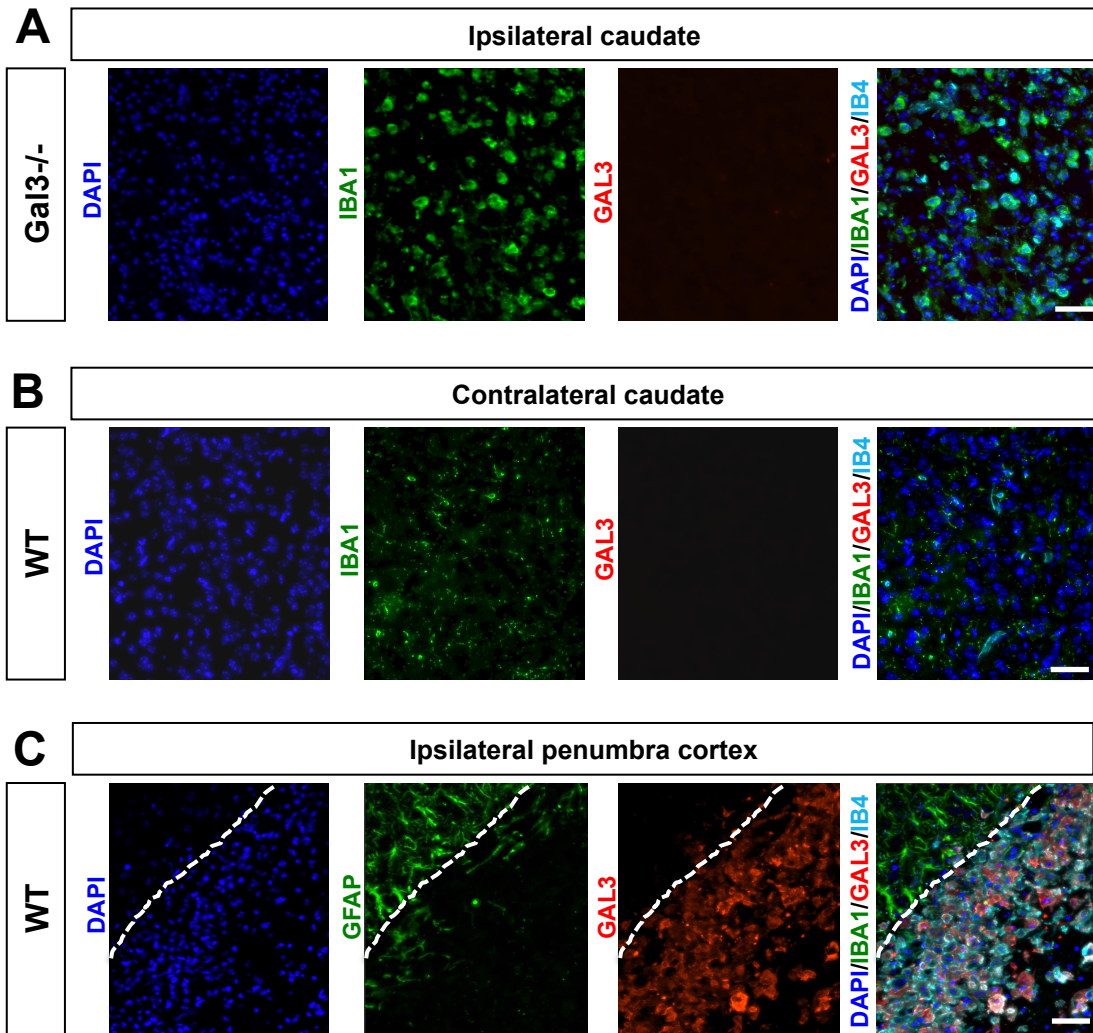
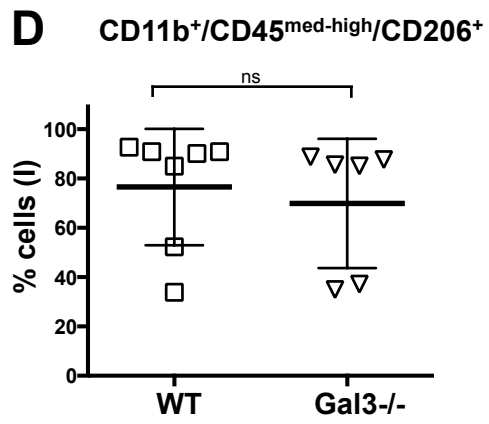
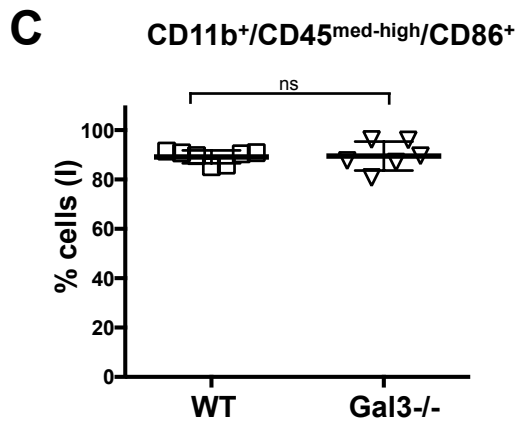
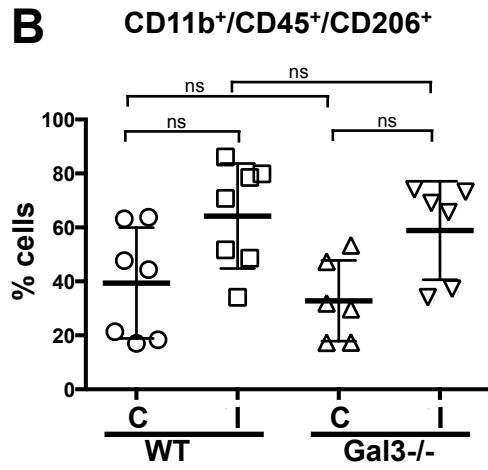
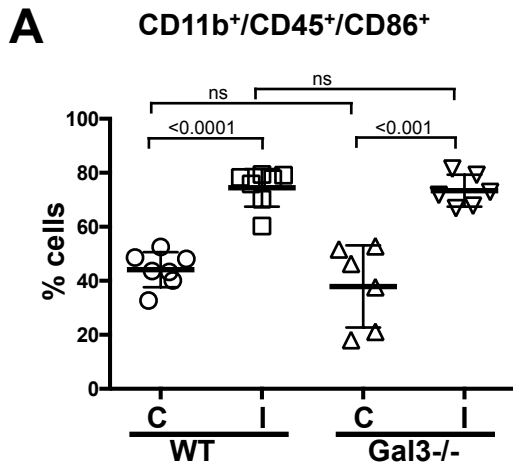


Supplementary Figure 1.

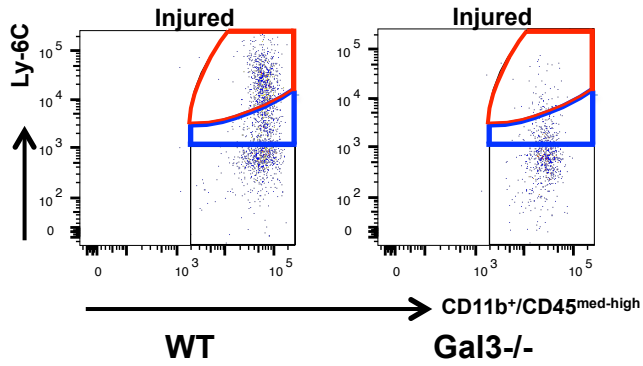


Supplementary Figure 2.

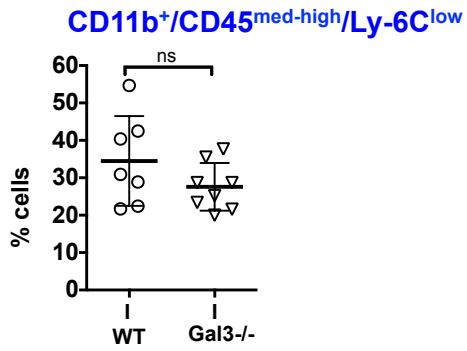


Supplementary Figure 3.

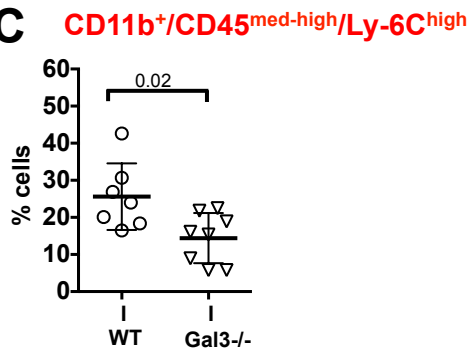
A



B



C



Supplementary Figure legends

Suppl. Figure 1. Gal3 is absent in injured Gal3^{-/-} mice but is upregulated in a small subset of astrocytes in the penumbra of WT mice, 72h post-MCAO.

A. Gal3 is not observed in the injured caudate of Gal3^{-/-} mice. Dying cells are indicated by punctate DAPI⁺ nuclei. Iba1⁺ and IB4⁺ amoeboid microglia/macrophages are abundant in injured regions. **B.** No Gal3⁺ cells are seen in the contralateral caudate region of WT mice. Note round-shaped morphology of DAPI⁺ nuclei. **C.** Gal3 is abundantly expressed in the cortical penumbra region of WT mice. Note many Gal3⁺/IB4⁺ cells but only few Gal3⁺/GFAP⁺ cells. Dashed line represents the border of the peri-infarct region. (scale bar: 40 μm).

Suppl. Figure 2. Lack of Gal3 does not alter expression of CD86 or CD206 in CD11b⁺/CD45⁺ or CD11b⁺/CD45^{med-high} cells.

A-B. Percent of CD11b⁺/CD45⁺ cells (including CD45-low, -medium, and -high) that express CD86⁺ (A) and CD206⁺ (B) in injured (I) and in matching contralateral (C) region of WT and Gal3^{-/-} mice. **C-D.** Percent of CD11b⁺/CD45^{med-high} cells that express CD86⁺ (D) and CD206⁺ (E) in injured region of both WT and Gal3^{-/-}. Similar data analysis was not performed in the contralateral regions because there were essentially no CD11b⁺/CD45^{med-high} cells. Dots in A-E represent data from individual animals (WT n = 7, Gal3^{-/-} n = 6). Mean ± SD. Significance levels as indicated by P values on individual panels. ns: non-significant (ANOVA with Bonferroni post hoc test). (C) – contralateral, (I) – injured.

Suppl. Figure 3. Gal3 affects infiltration of Ly-6C cells.

A. Gates used to identify CD11b⁺/CD45^{med-high}/Ly-6C^{high} cells (activated microglial and monocyte-derived macrophages, red). **B-C.** Percent of CD11b⁺/CD45^{med-high}/Ly-6C^{low} and CD11b⁺/CD45^{med-high}/Ly-6C^{high} cells in injured regions of WT and Gal3^{-/-} 72h post-MCAO; percent of positive cells was not analyzed in matching contralateral regions because of too few CD11b⁺/CD45^{med-high} positive cells in this region. Dots in B-C represent individual animals (n = 7 for WT and n = 8 for Gal3^{-/-}), Mean ± SD, significance levels indicated on individual panels, ns: non-significant (ANOVA with Bonferroni post hoc test).