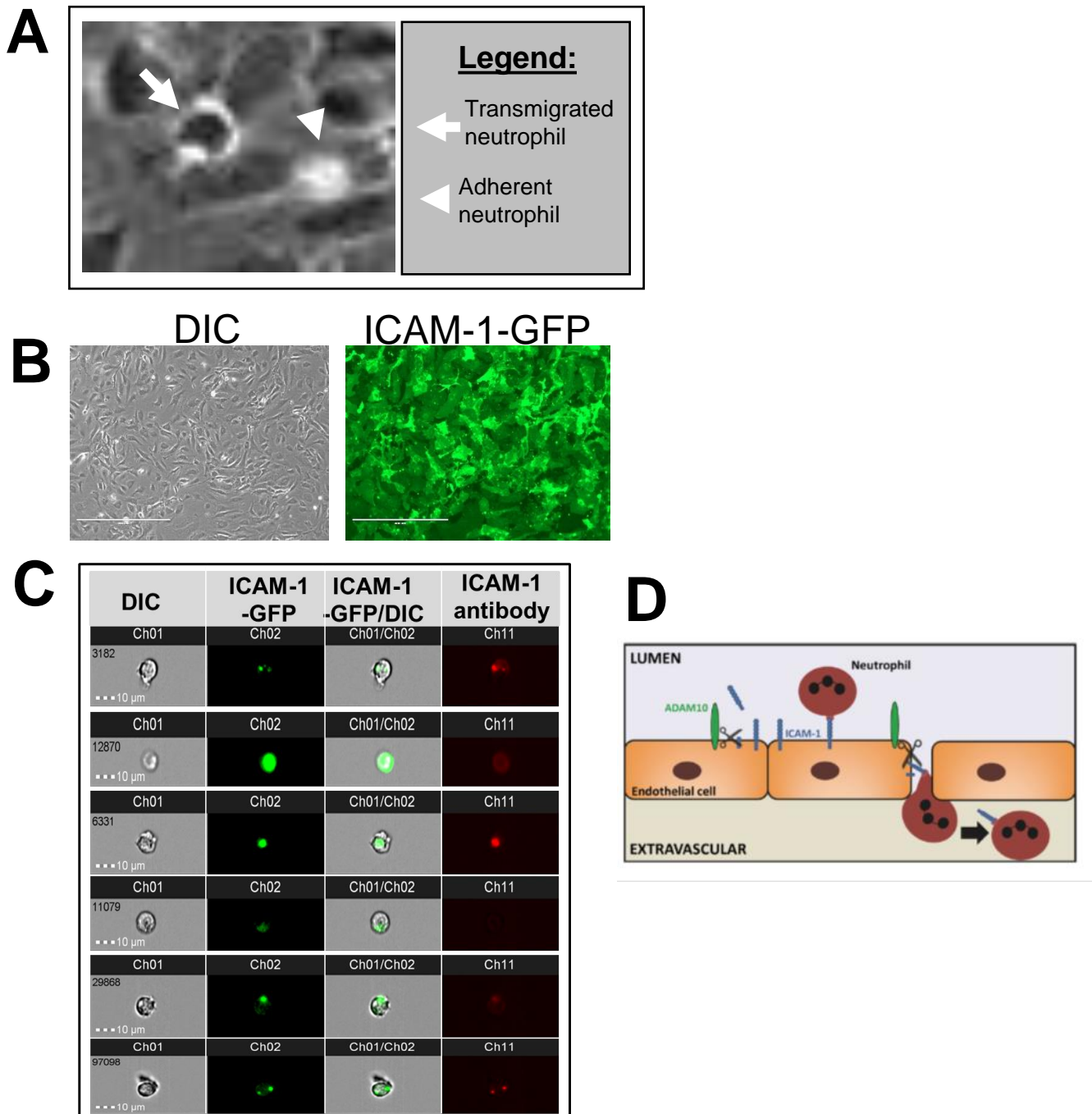


# FIGURE S1



**Figure S1.** (A) ECs were applied to flow in the TEM flow chamber and perfused with primary human neutrophils. Phenotype of the neutrophils detected with DIC microscopy discriminates between a crawling neutrophil (bright dot phenotype, arrow) and a transmigrated neutrophil (dark-grey phenotype, arrowhead). (B) ECs were transfected with ICAM-GFP as indicated. >95% of all endothelial cells were transfected. (C) ImageStream example of positive neutrophils, as indicated. Neutrophils were additionally incubated with an ICAM-1-antibody (red). (D) Schematic overview of proposed mechanism by which shedding of the extracellular domain of ICAM-1 by endothelial ADAM10 is involved in neutrophil diapedesis.