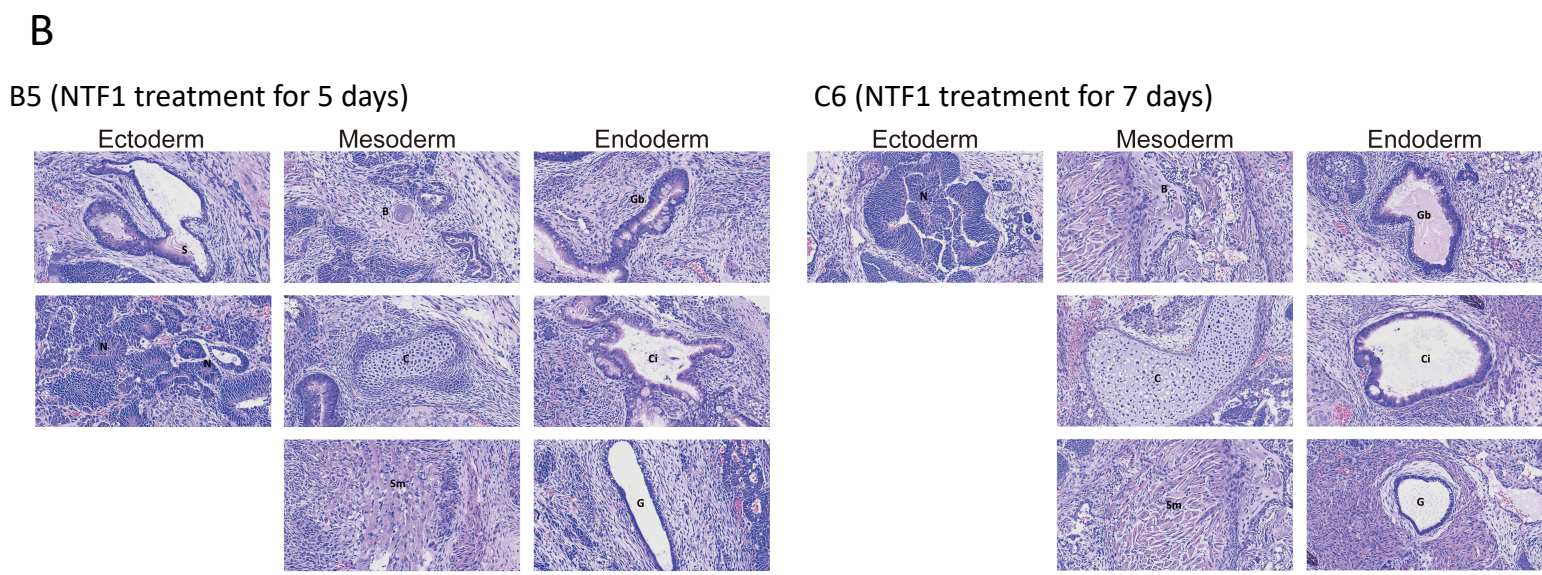
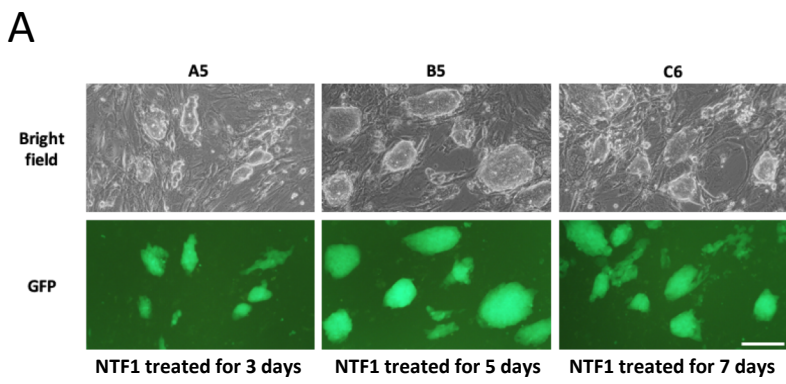


## Supplement Figures



**Figure S1. The NTF1-mediated somatic reprogramming of the  $MEF^{Col1a1\ 4F2A\ Oct4-GFP}$  acquires pluripotency**  
 (A) Representative clonally isolated iPSCs from three-day (A5), five-day (B5), and seven-day (C6) NTF1 treatments. The  $iPSC^{Col1a1\ 4F2A\ Oct4-GFP}$  clones were cultured and maintained with  $\gamma$ DR4 feeder cells in R1 ESC medium. (B) Teratoma formation assays of the iPSC B5 and C6 clones. S: squamous epithelium; N: neuronal rosette; B: bone; C: cartilage; Sm: skeletal muscle; Gb: Gut epithelium with goblet cells; Ci: ciliated respiratory-like epithelium; G: glands. Scale bar denotes 100  $\mu$ m.

## Supplement Tables

Table S1. Quantitative PCR primer list

Genes	Forward	Reverse
Snail1	5' -TGT GTC TGC ACG ACC TGT G-3'	5' -AGT GGG AGC AGG AGA ATG G-3'
Snail2	5' -ACA CAT TGC CTT GTG TCT GC-3'	5' -GCC CTC AGG TTT GAT CTG TC-3'
CDH1	5' -AAC CCA AGC ACG TAT CAG GG-3'	5' -GAG TGT TGG GGG CAT CAT CA-3'
Thy1	5' -TCG CTC TCC TGC TCT CAG TC-3'	5' -TTA TTC TCA TGG CGG CAG TC-3'
Oct4	5' -ACA TCG CCA ATC AGC TTG G-3'	5' -AGA ACC ATA CTC GAA CCA CAT CC-3'
Sox2	5' -ACA GAT GCA ACC GAT GCA CC-3'	5' -TGG AGT TGT ACT GCA GGG CG-3'
Nanog	5' -CCA GGT TCC TTC CTT CTT CC-3'	5' -GGT GAG ATG GCT CAG TGG AT-3'
Rex1	5' -ACG GAT ACC TAG AGT GCA TCA TAC G-3'	5' -TTG CTC CAC TTC CTC CAA GCT-3'
Esrrb	5' -TTT CTG GAA CCC ATG GAG AG-3'	5' -AGC CAG CAC CTC CTT CTA CA-3'
Dppa3	5' -CTG AAA GAC CCT ATA GCA AAG A-3'	5' -CTC ACT GTC CCG TTC AAA CTC A-3'
LIF r	5' -AGA AGA ACT GGC TCC CAT TG-3'	5' -GGA TGT CGT CCC ATT TCA CT-3'
GP130	5' -ATA GTC GTG CCT GTG TGC TTA-3'	5' -GGT GAC CAC TGG GCA ATA TG-3'
GAPDH	5' -GAA AGC TGT GGC GTG AT-3'	5' -TCC ACG ACG GAC ACA TT-3'