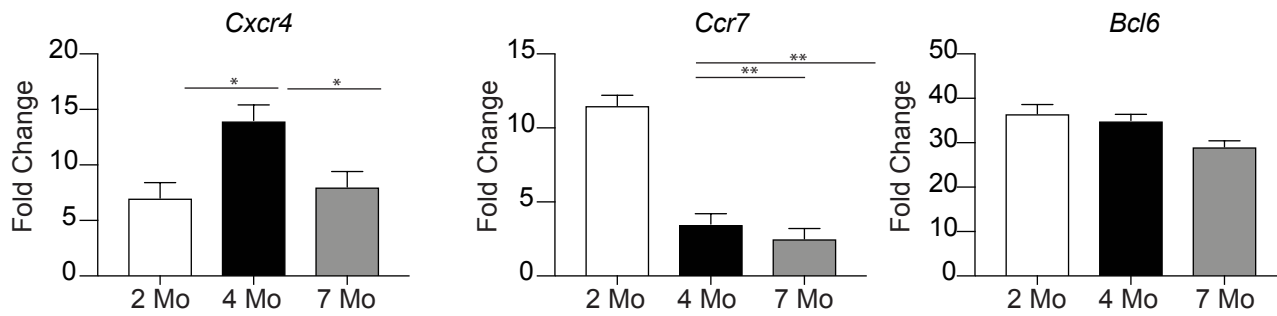
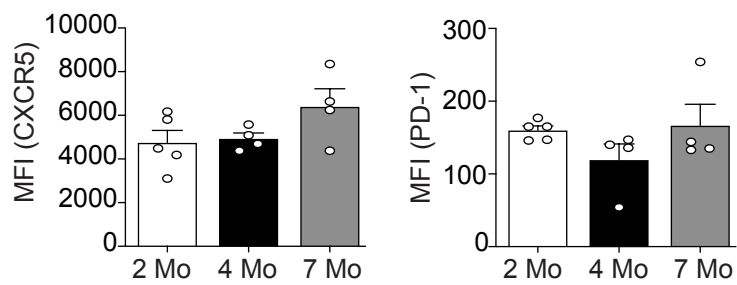
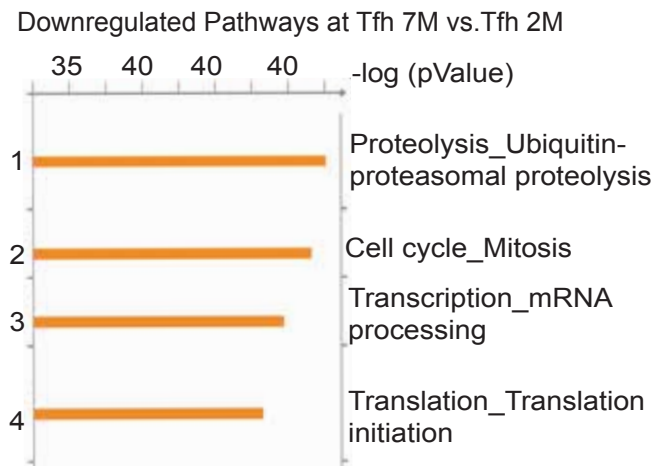
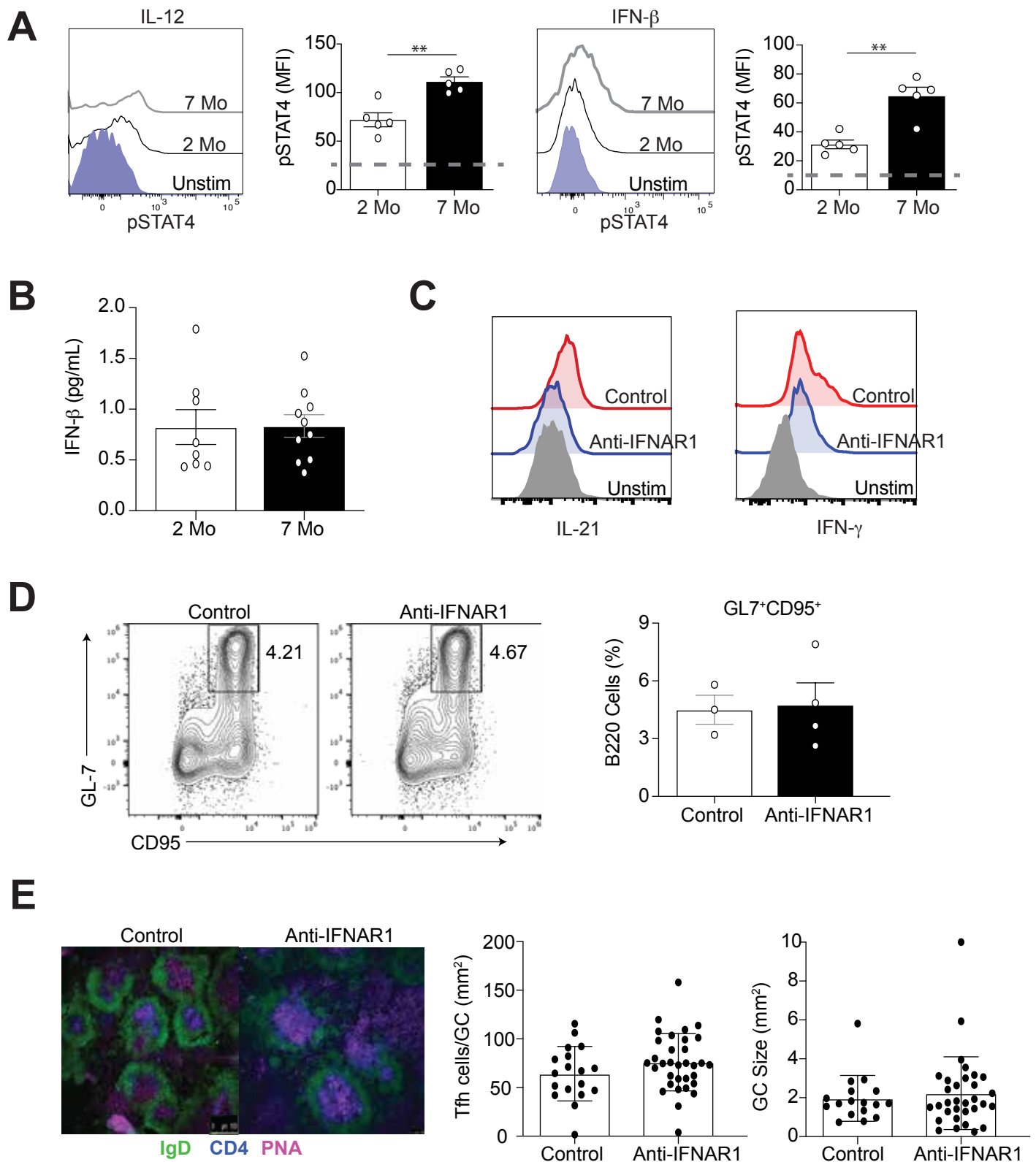
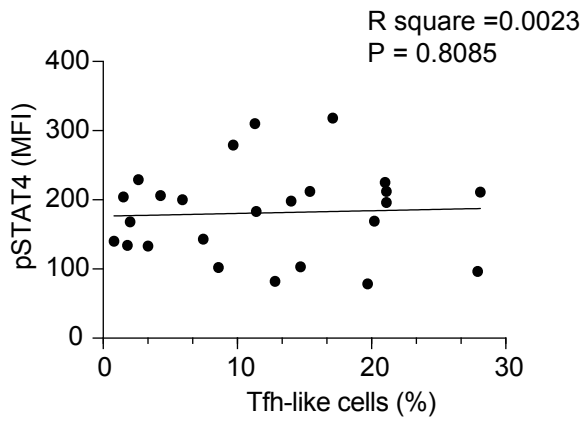
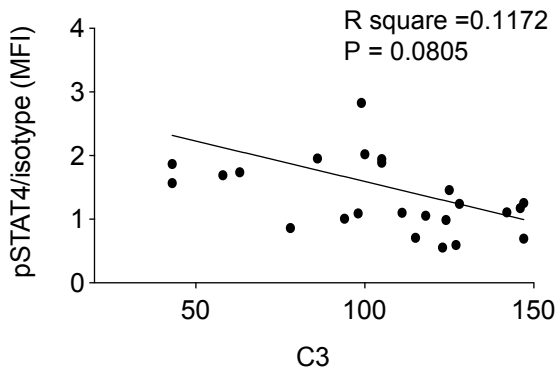
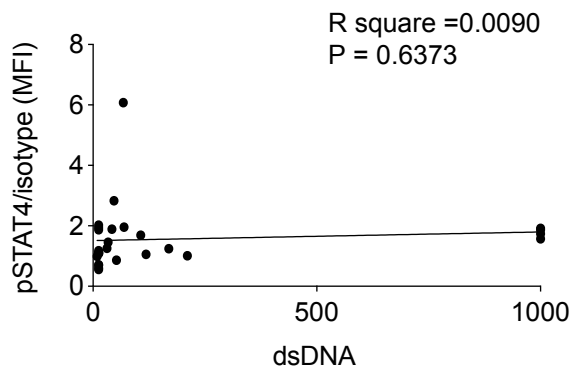
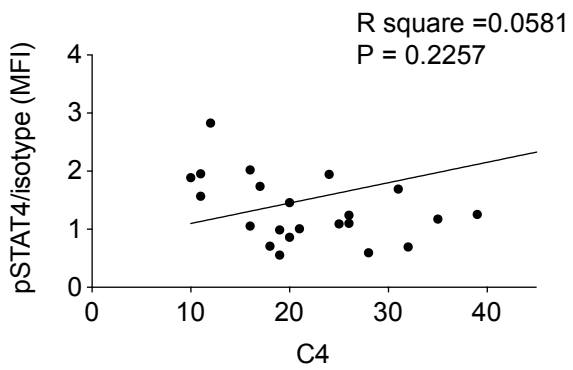


A**B****C**



A**B**

Supplemental Table 1

	Healthy Control	SLE
Female	12	23
Male	7	2
Age	37 +/-11	39+/- 12
Race		
White	9	6
African American	4	13
Hispanic	4	6
Asian	2	
Avg SLEDAI	NA	10+/- 6.5

Supplementary Table 2: Antibodies used for flow cytometry, ELISA, microscopy and *in vivo*

Antigen	Dilution	Clone	Fluorochrome	Source
CD4	1:200	RM4-5	Alexa 700, BV510	eBioscience
CD44	1:200	IM7	e450	eBioscience
PD-1	1:200	J43	PE-Cy7	eBioscience
IgD	1:200	11-26	e450	eBioscience
B220	1:500	RA3-6B2	PE-Texas Red	BD Biosciences
CXCR5	1:100	2G8	BV605	BD Biosciences
GL-7	1:200	GL-7	FITC	BD Biosciences
CD95	1:200	Jo2	PE-Cy7	BD Biosciences
IL-21R-FC chimera	1:50	Cat # 596-MR		R&D Systems
Ly6C	1:200	AL-21	Fitc	BD Biosciences
IFN-g	1:500	XMG1.2	PeCy7	BD Biosciences
PSGL-1	1:1000	2PH1	APC	BD Biosciences
pSTAT4	1:10	SLEB11	APC	BD Biosciences
Tbet	1:100	eBio4B10	APC	eBiosciences
Bcl6	1:100	K112-91	PE	BD Biosciences
CD4	1:200	RM4-5	FITC	eBiosciences
IgD	1:200	11-26	Alexa 647	eBiosciences
PNA	1:500		Biotin	Vector Labs
FITC	1:200	Rabbit polyclonal	Alexa 488	Invitrogen
Streptavidin	1:200		Alexa 555	Invitrogen
Anti-IgG1 AP	1:2000	Goat polyclonal	ALP	Sothorn Biotech
Anti-IgG2c AP	1:2000	Goat polyclonal	ALP	Sothorn Biotech
CXCR4	1:100	L276F12	Alexa Flour 647	Biolegend
CD86	1:100	GL-1	PE	Biolegend
IFNAR1	1:20	Mar1-5A3	PE	Biolegend
IFNAR1	600ug	Mar1-5A3	Purified	BioXcell
Anti-Rat IgG	1mg		Purified	Sigma-Aldrich
CD4	1:25	ROA-T4	V500	BD Biosciences
CD45RA	1:50	HI100	V450	BD Biosciences
CXCR5	1:25	RF8B2	Alexa Flour 488	BD Biosciences
CCR7	1:50	4B12	APC 780	Ebioscience
PD-1	1:50	EH12.1	PeCy7	BD Biosciences
IFNG	1:25	B27	BV510	BD Biosciences
IL-21	1:25	3A3-N2.1	647	BD Biosciences
pSTAT4	1:10	pY693	647	BD Biosciences