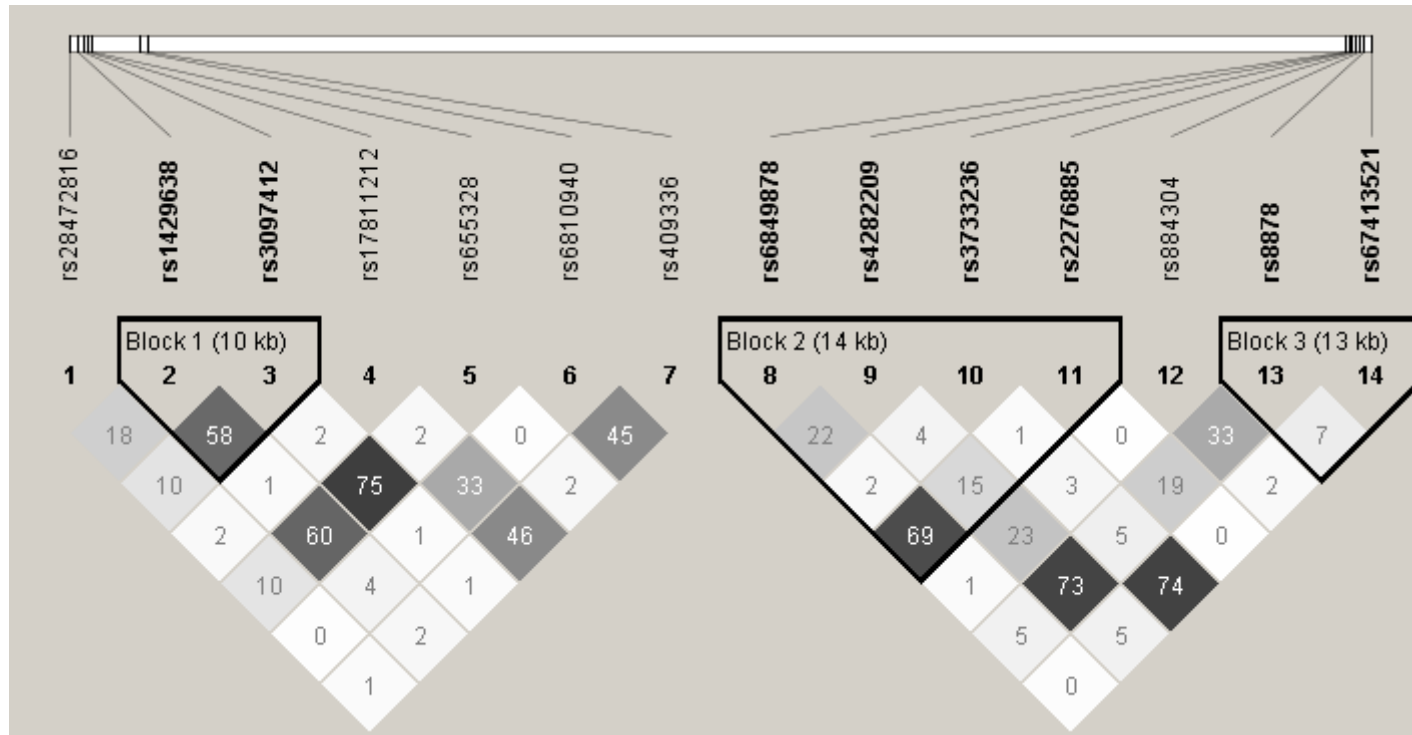
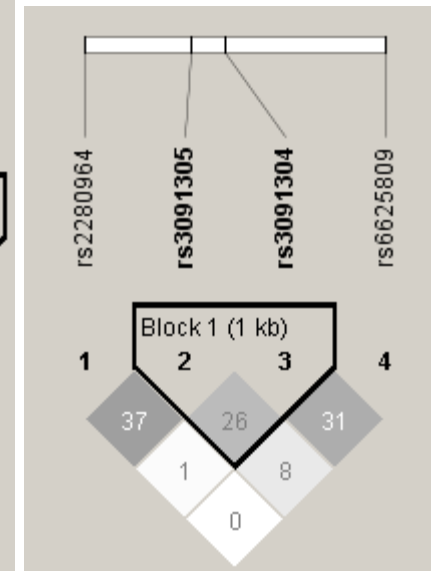


Suppl. Figure 1

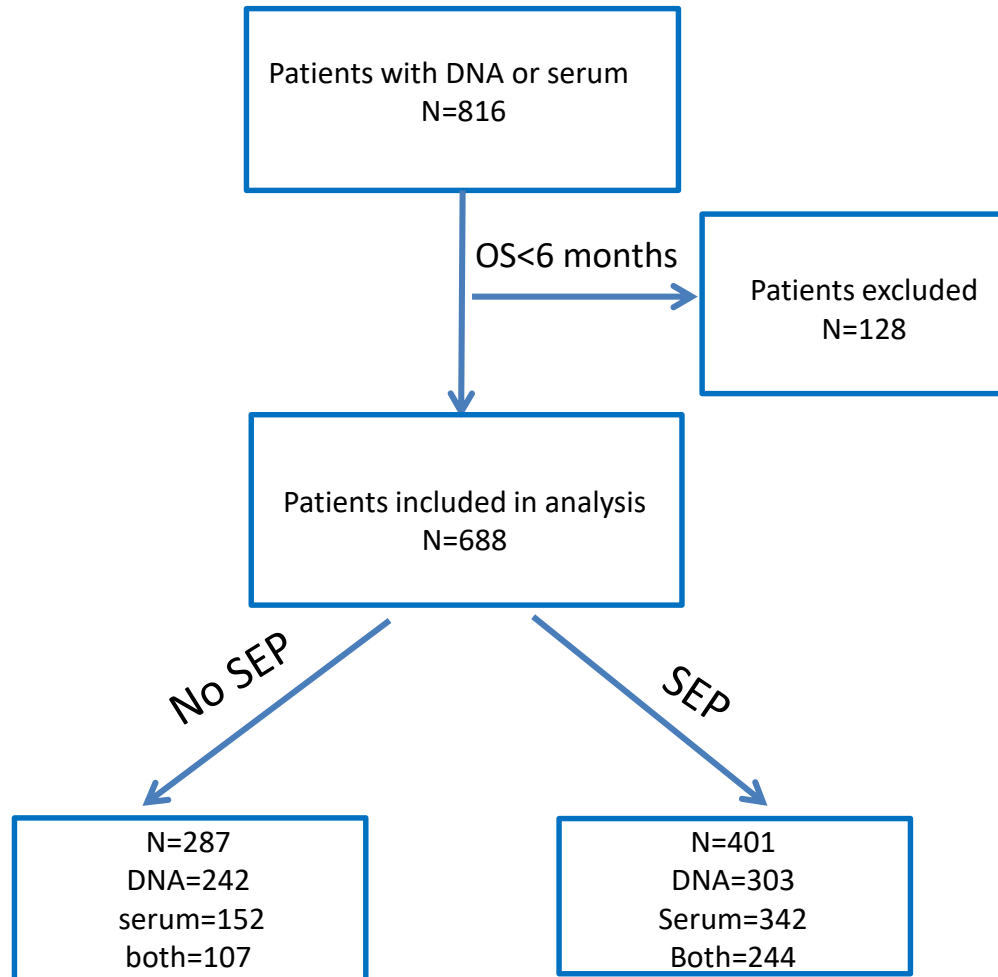
CXCL4, CXCL4V1 and CXCL9-11



CXCR3



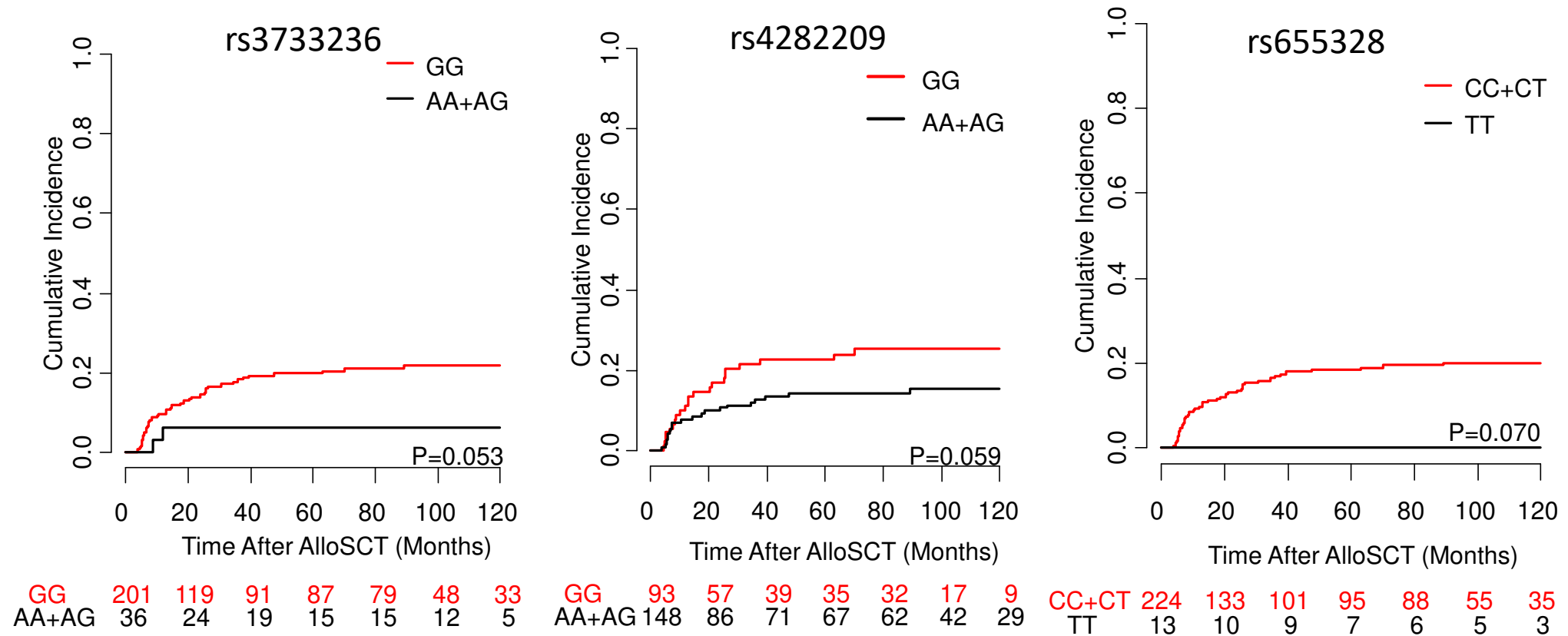
Suppl. Figure 2



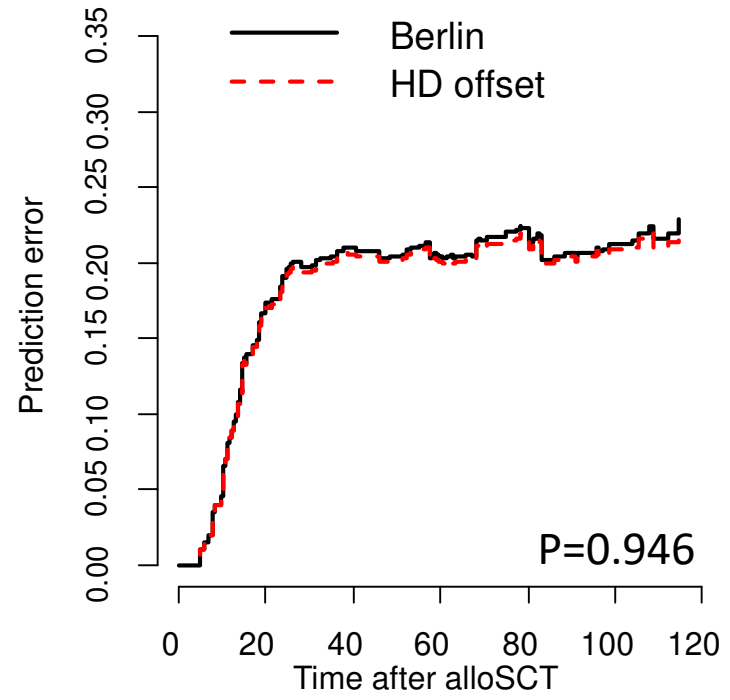
Abbreviations:

OS: Overall Survival (month); SEP: statin-based endothelial protection.

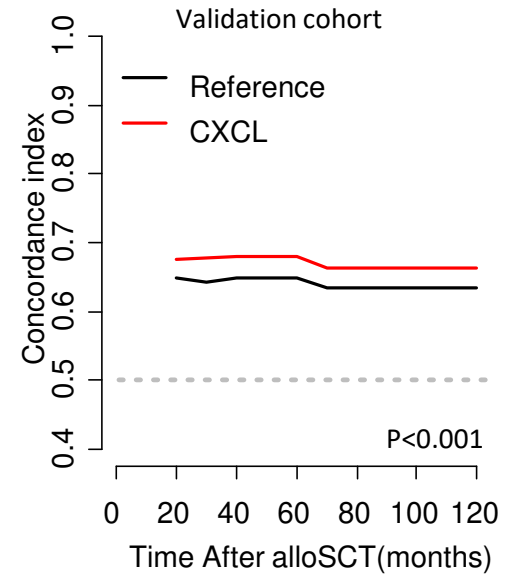
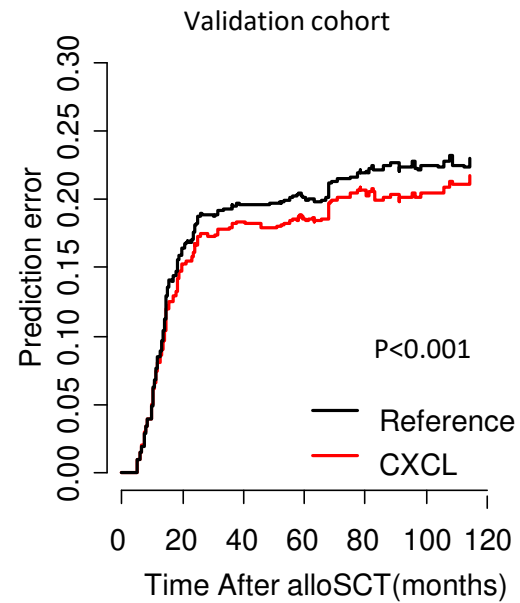
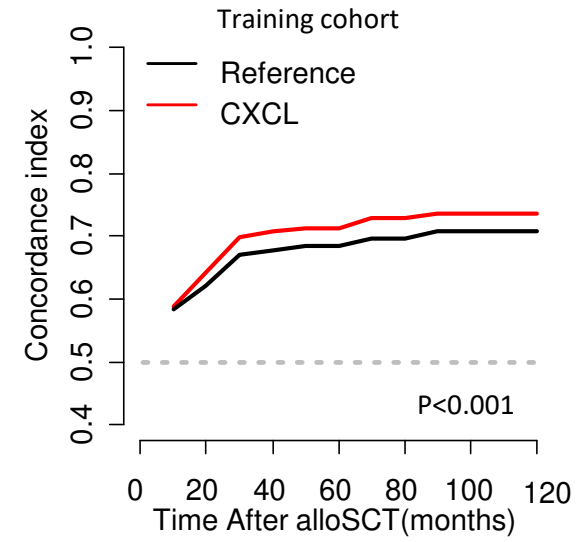
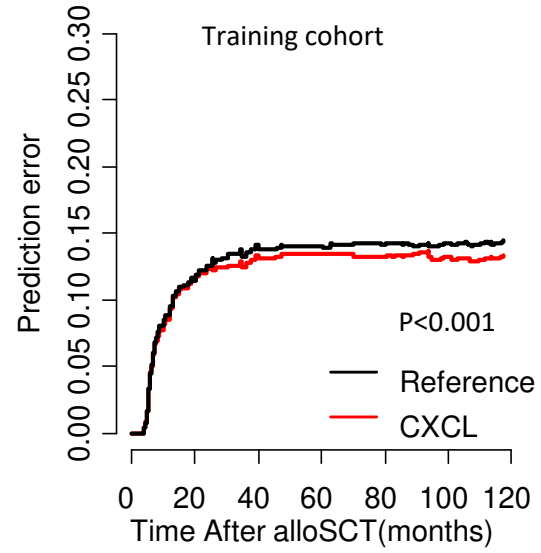
Suppl. Figure 3



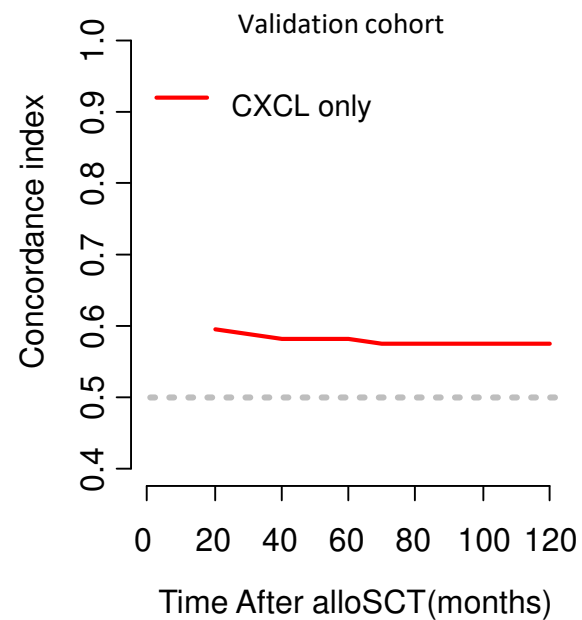
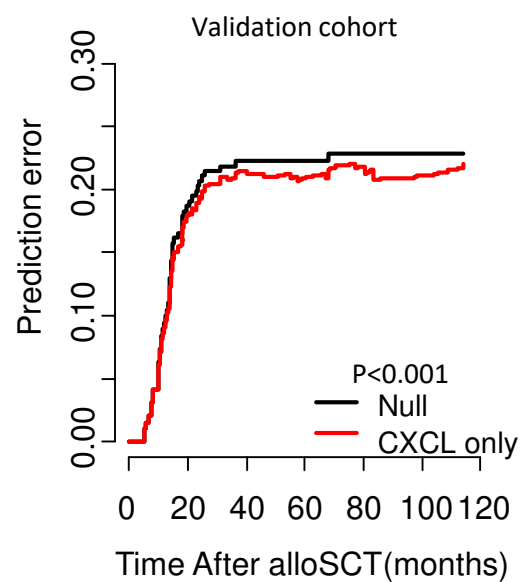
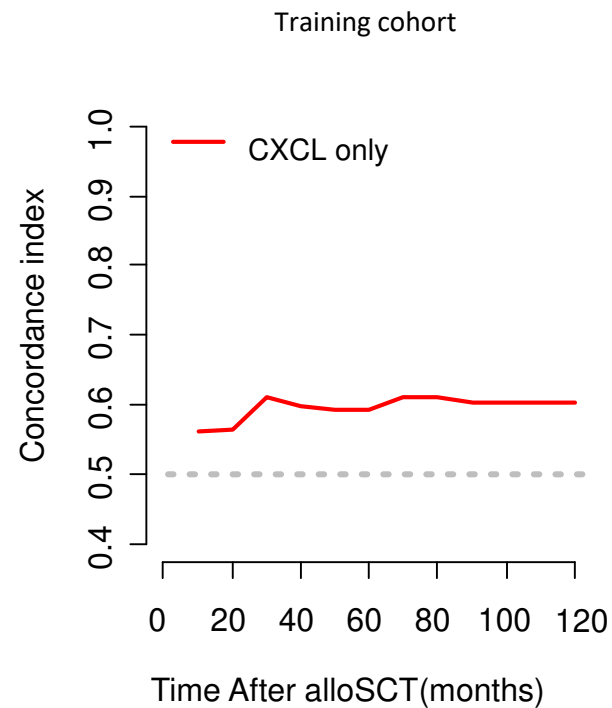
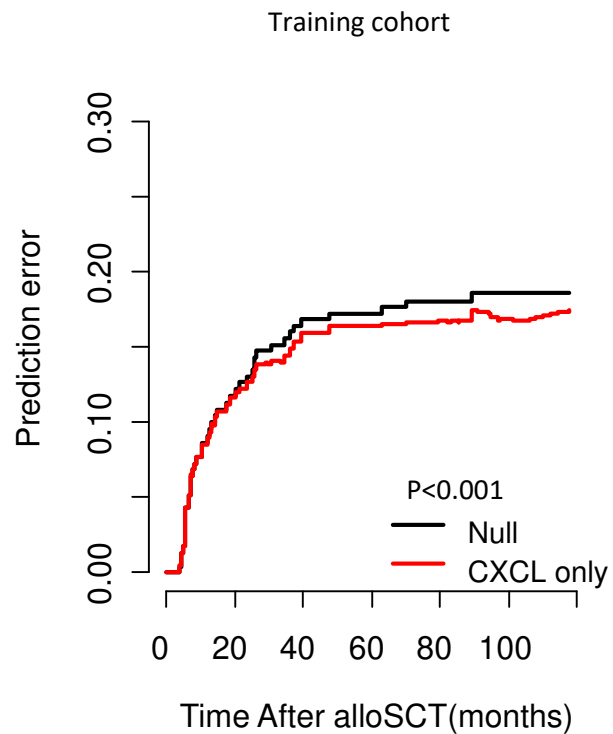
Suppl. Figure 4



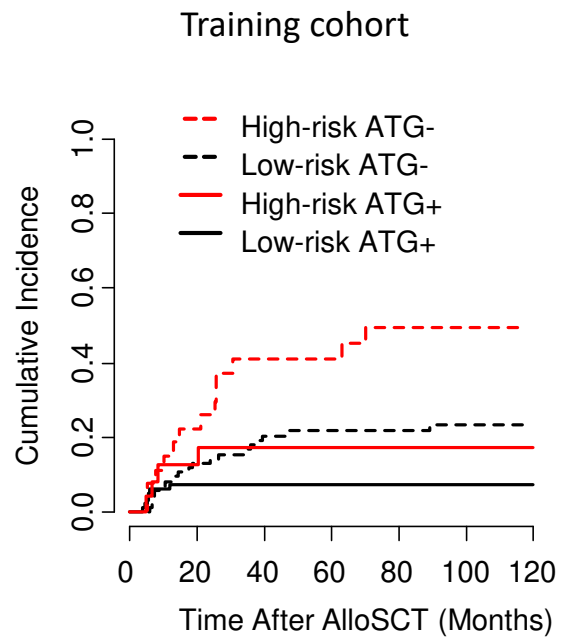
Suppl. Figure 5A



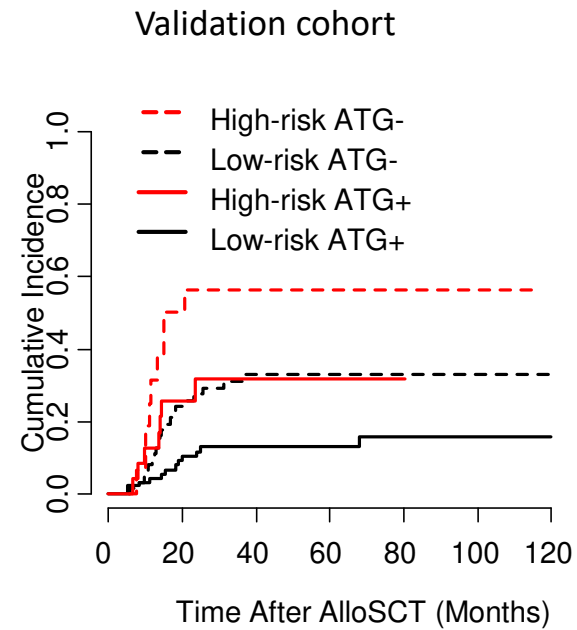
Suppl. Figure 5B



Suppl. Figure 6

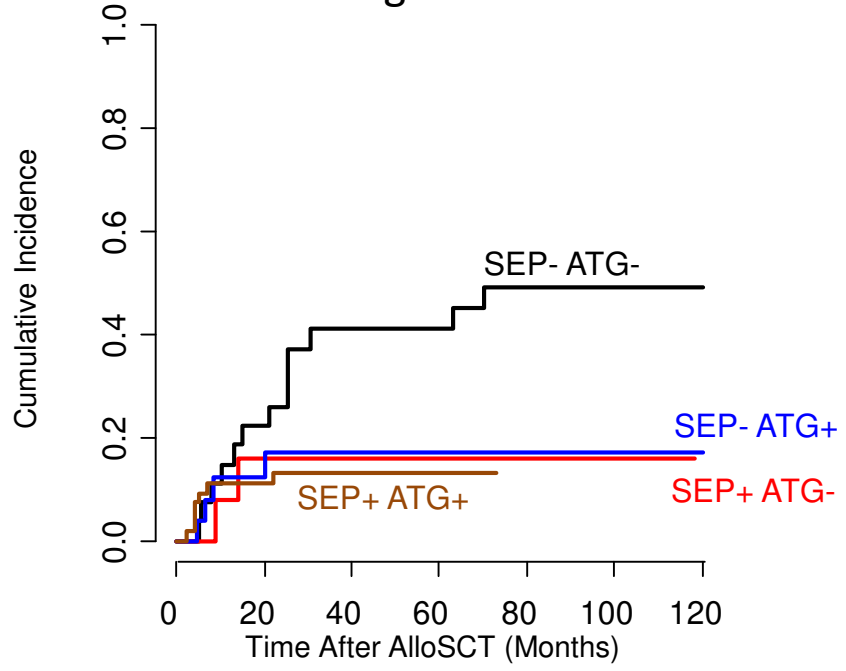


High-risk ATG-	27	15	8	7	5	3	2
Low-risk ATG-	90	50	32	29	27	22	18
High-risk ATG+	25	13	9	9	9	4	4
Low-risk ATG+	100	66	62	58	54	31	14



High-risk ATG-	16	5	3	2	2	1	1
Low-risk ATG-	65	34	18	15	11	7	4
High-risk ATG+	24	11	6	3	1		
Low-risk ATG+	97	45	31	22	9	4	2

High risk

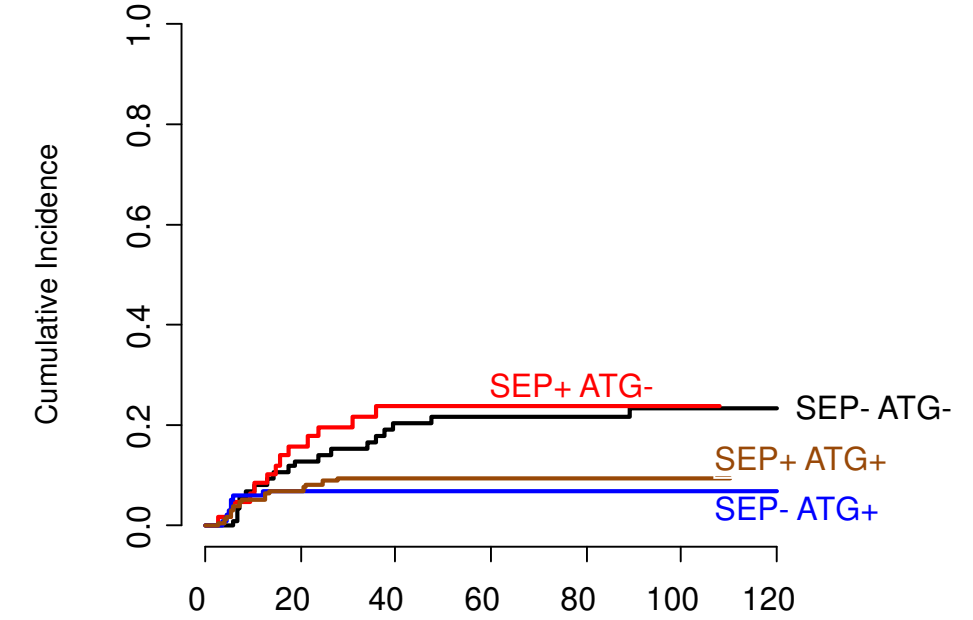


SEP- ATG-	27	15	8	7	5	3	2
SEP+ ATG-	14	6	4	2	1	1	
SEP- ATG+	25	13	9	9	9	4	4
SEP+ ATG+	54	30	19	4			

5 year cumulative incidence: (95%CI)

- Statin- ATG-: 41.1% (25.2%-61.9%)
- Statin+ ATG-: 16.1% (4.3%-50.1%)
- Statin- ATG+: 17.1% (6.8%-39.6%)
- Statin+ ATG+: 13.2% (6.5%-25.7%)

Low risk

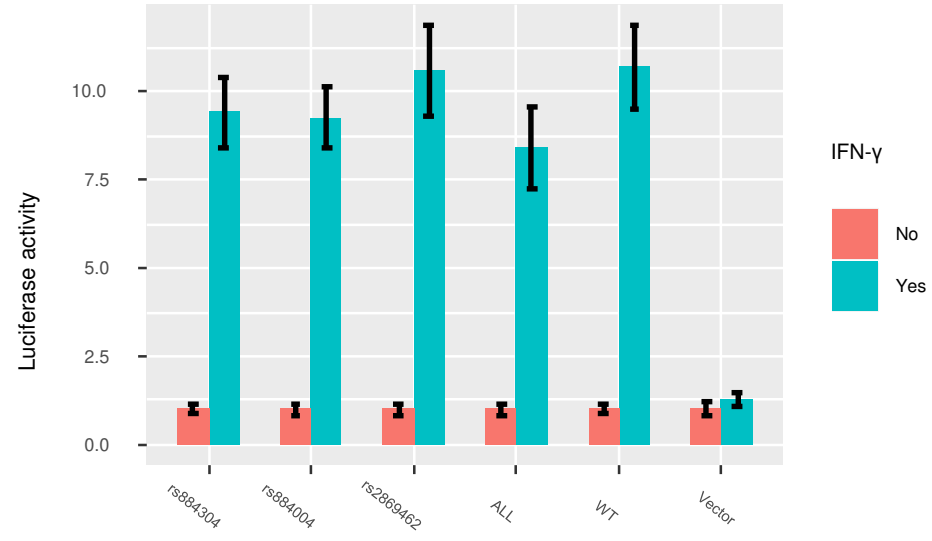


SEP- ATG-	90	50	32	29	27	22	18
SEP+ ATG-	61	32	22	14	2	1	
SEP- ATG+	100	66	62	58	54	31	14
SEP+ ATG+	174	116	75	29	4	1	

5 year cumulative incidence: (95%CI)

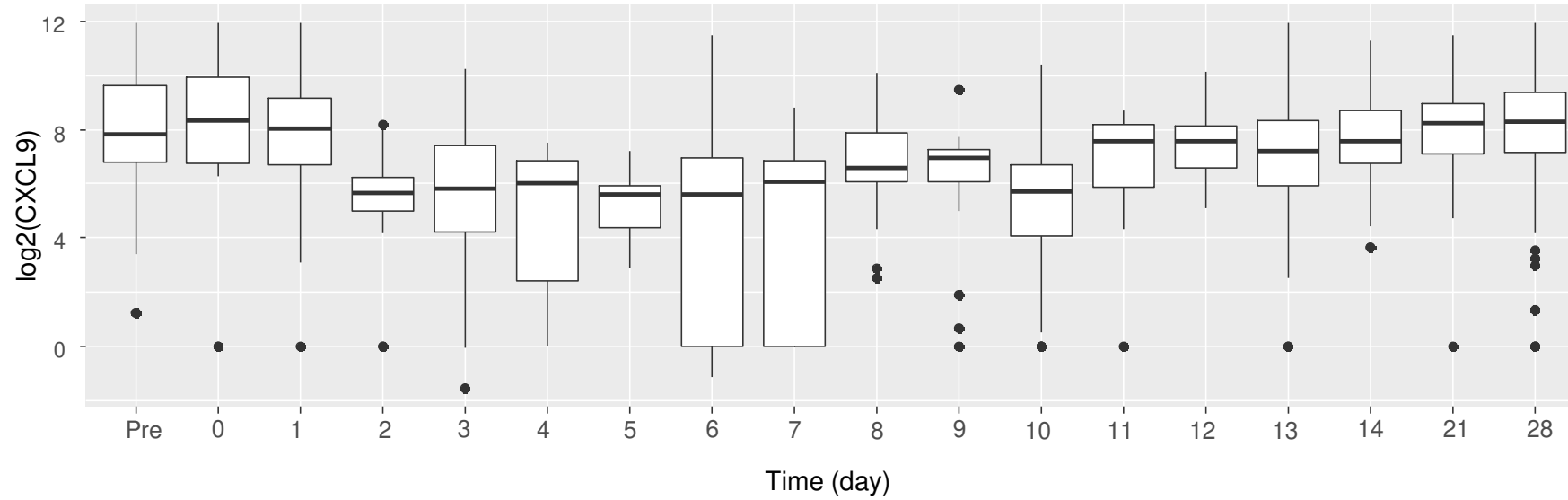
- Statin- ATG-: 20.4% (13.2%-30.7%)
- Statin+ ATG-: 23.6% (14.4%-37.3%)
- Statin- ATG+: 7.1% (3.4%-14.2%)
- Statin+ ATG+: 9.5% (5.9%-15.1%)

Suppl. Figure 8



Suppl. Figure 9

Training cohort



SEP cohort

