

Figure S1

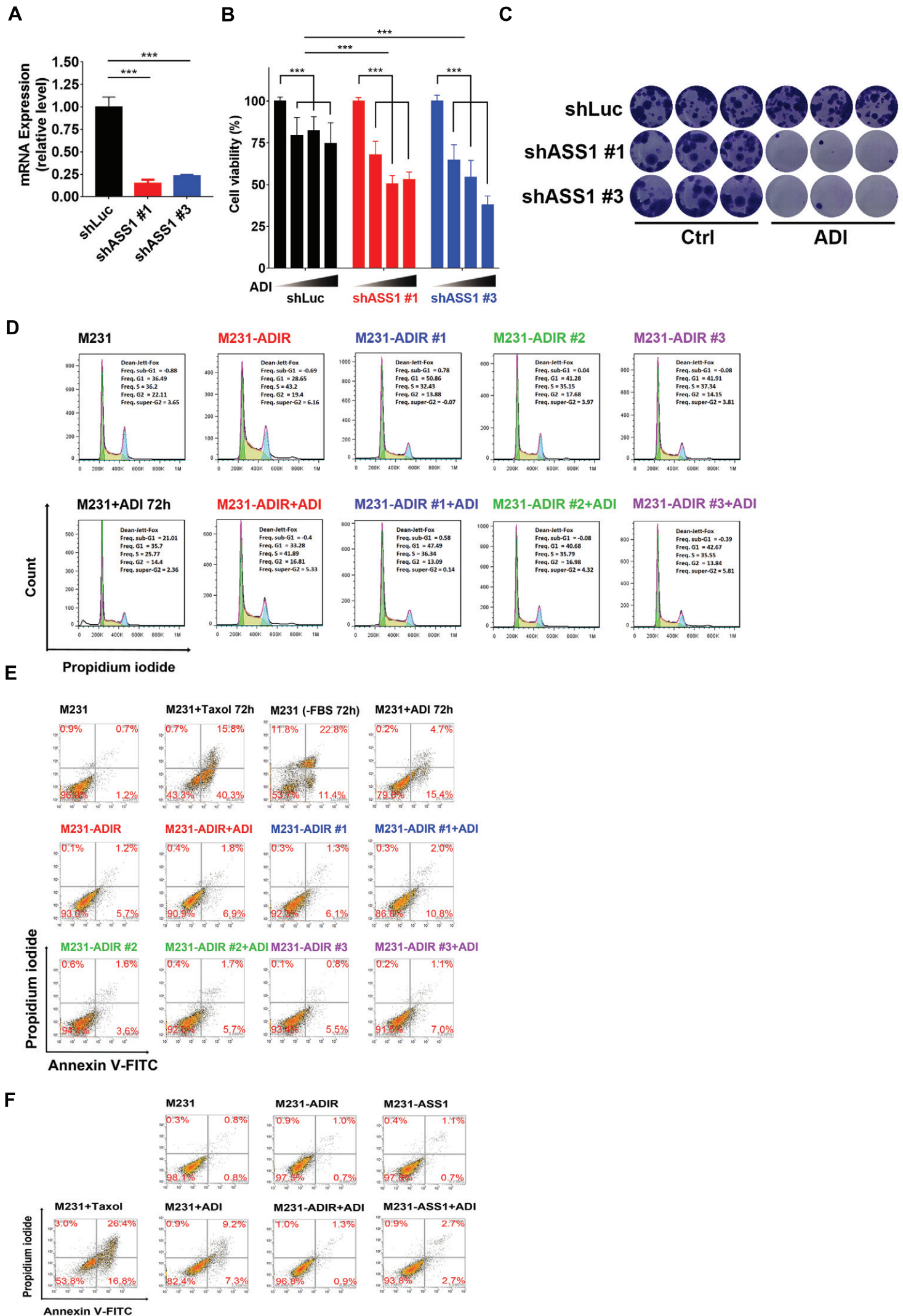


Figure S2

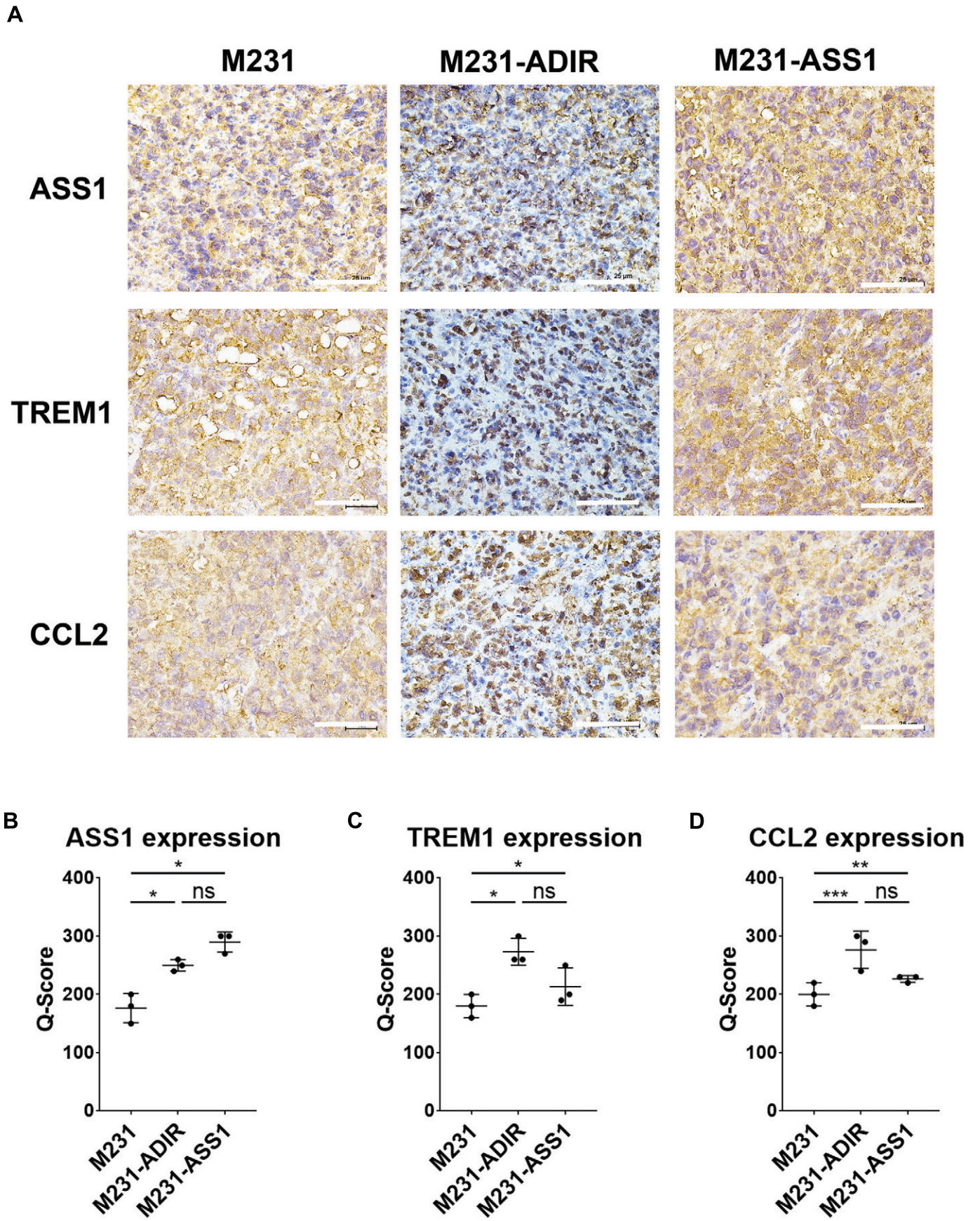


Figure S3

A

Pathways involved in M231-ASS1 cells

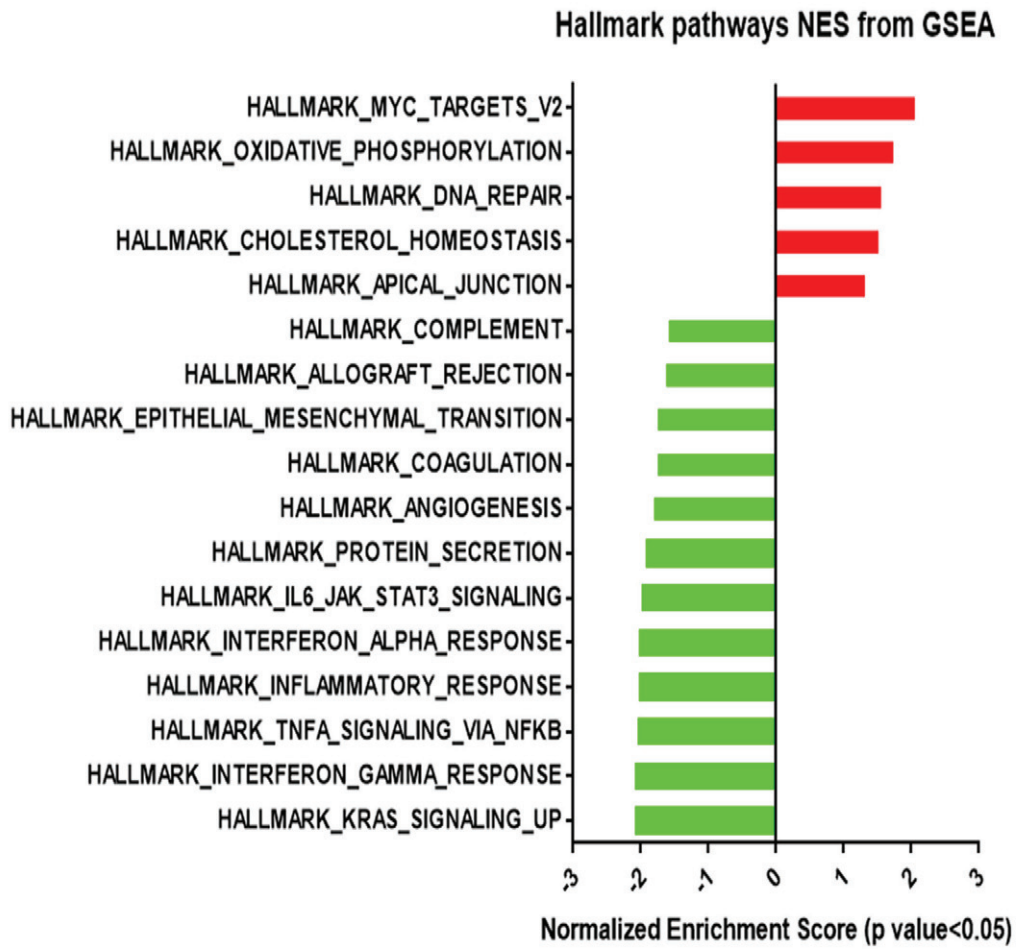


Figure S4

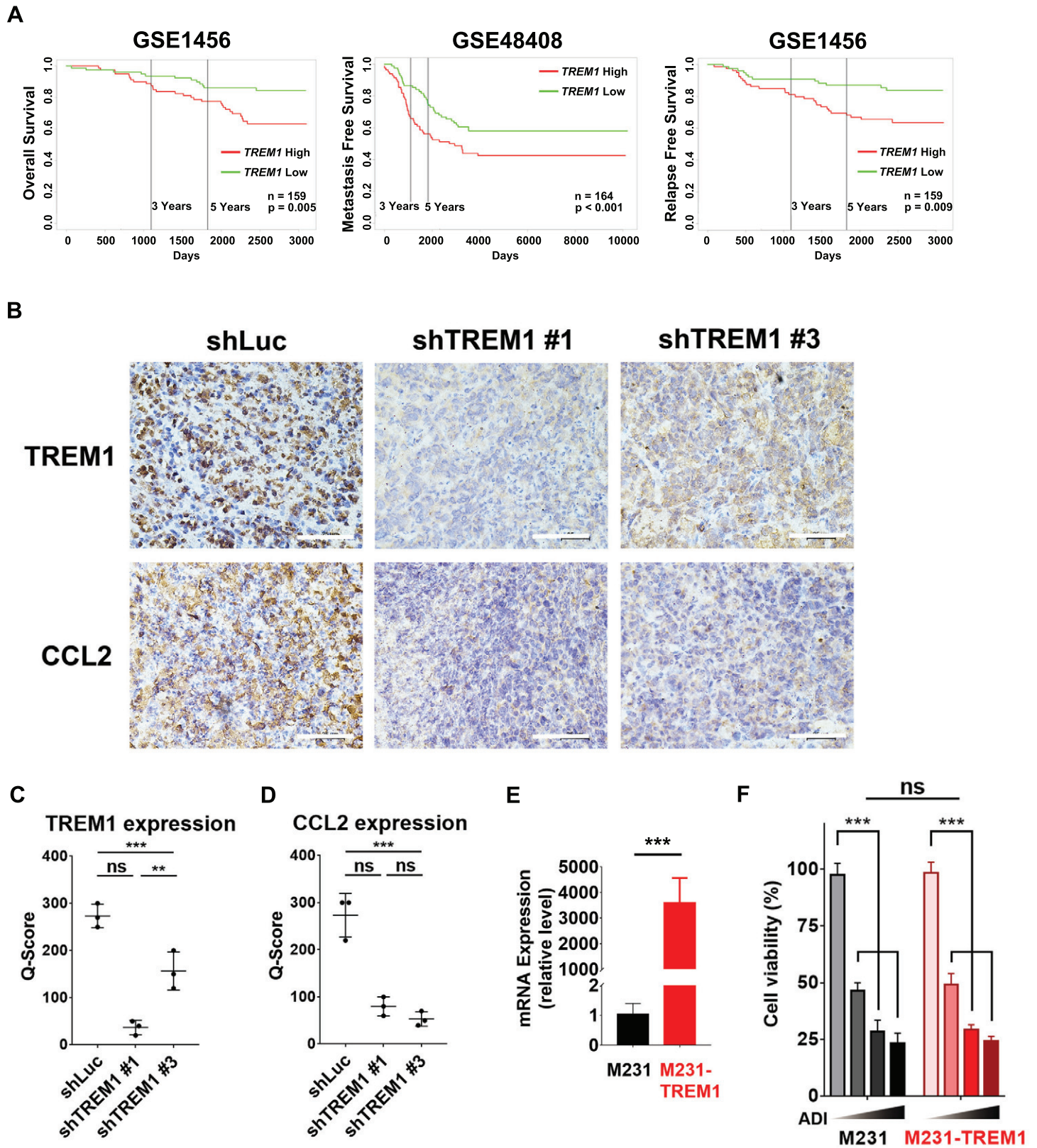


Figure S5

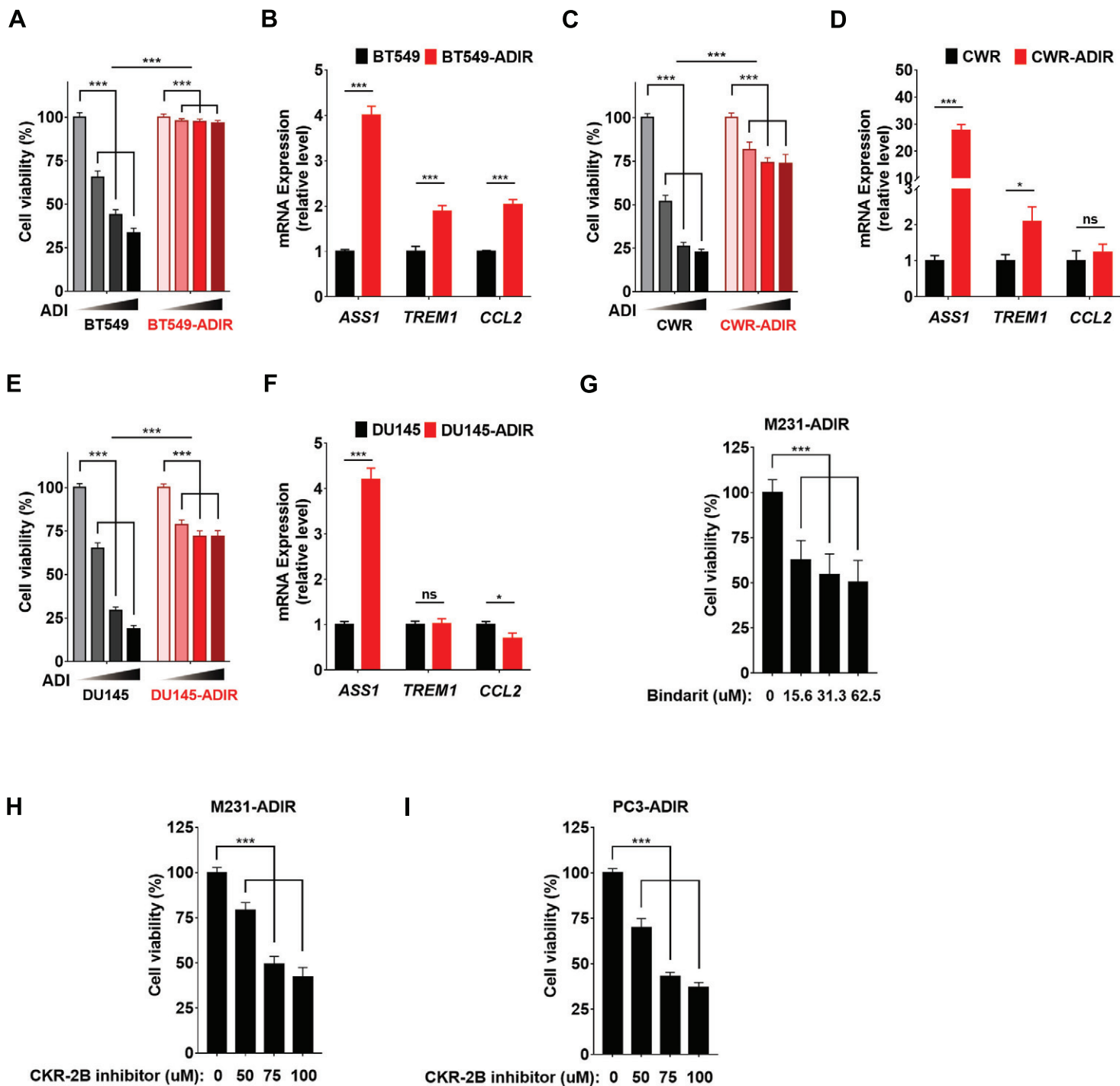


Figure S6

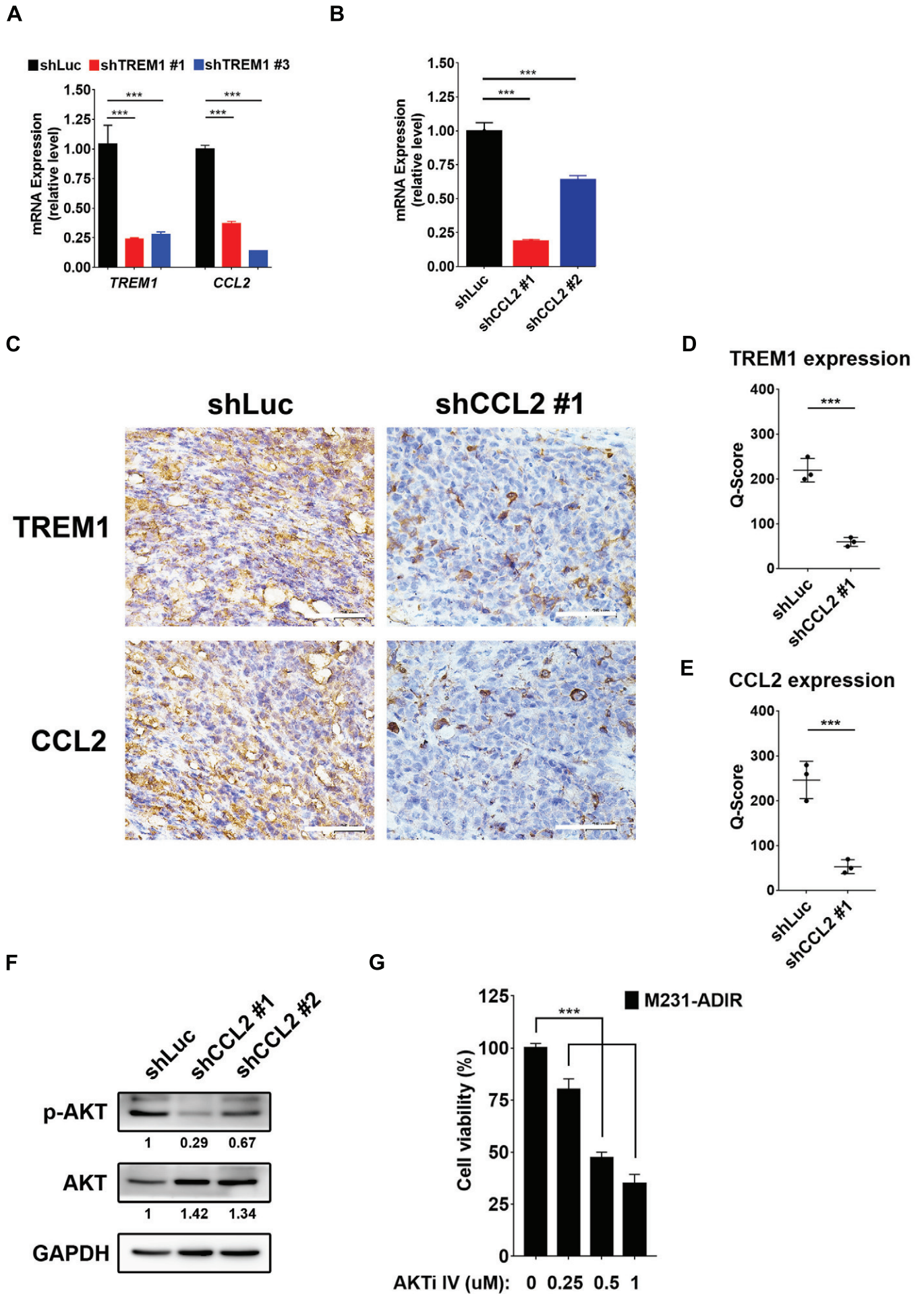


Figure S7

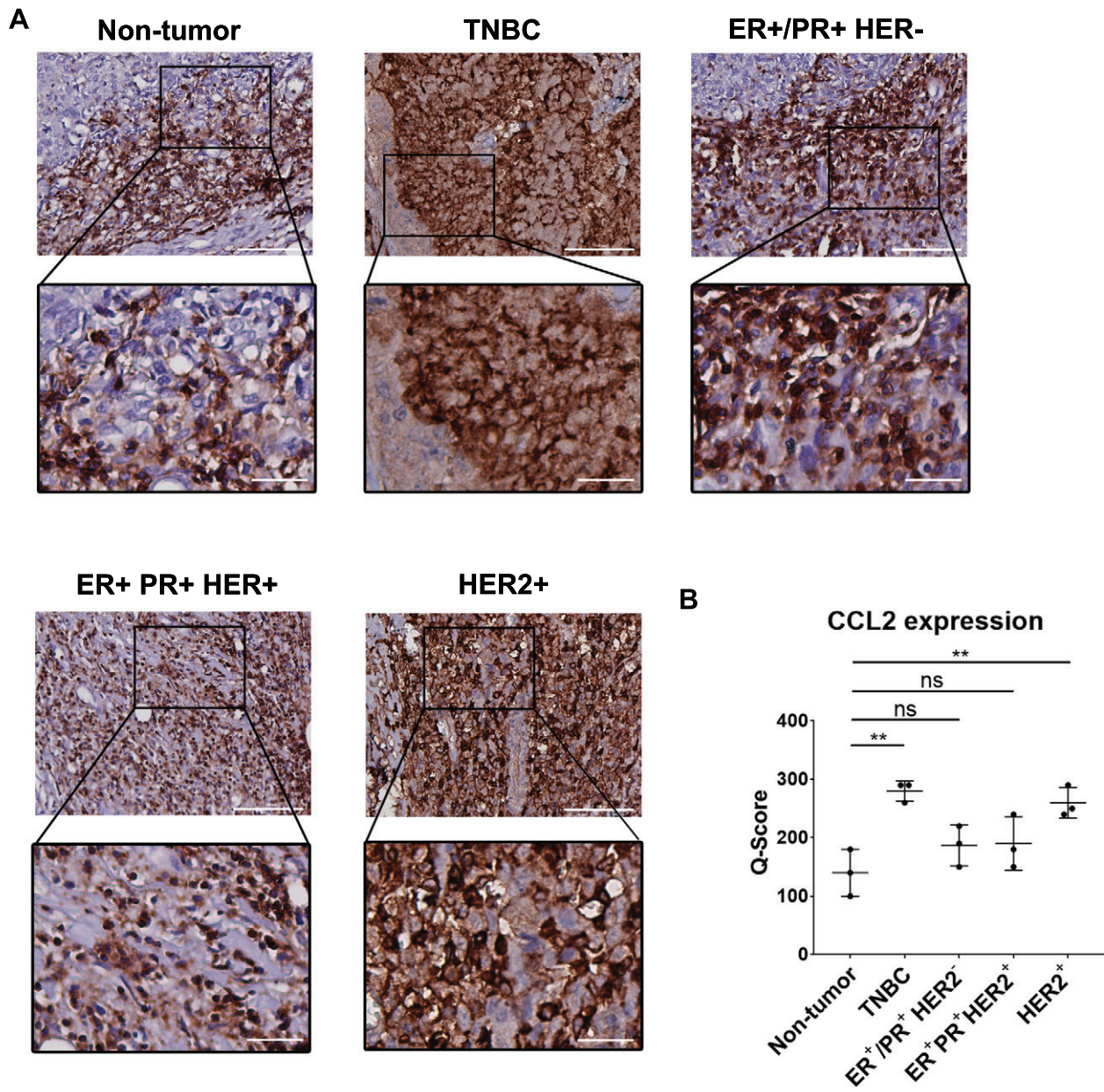


Figure S8

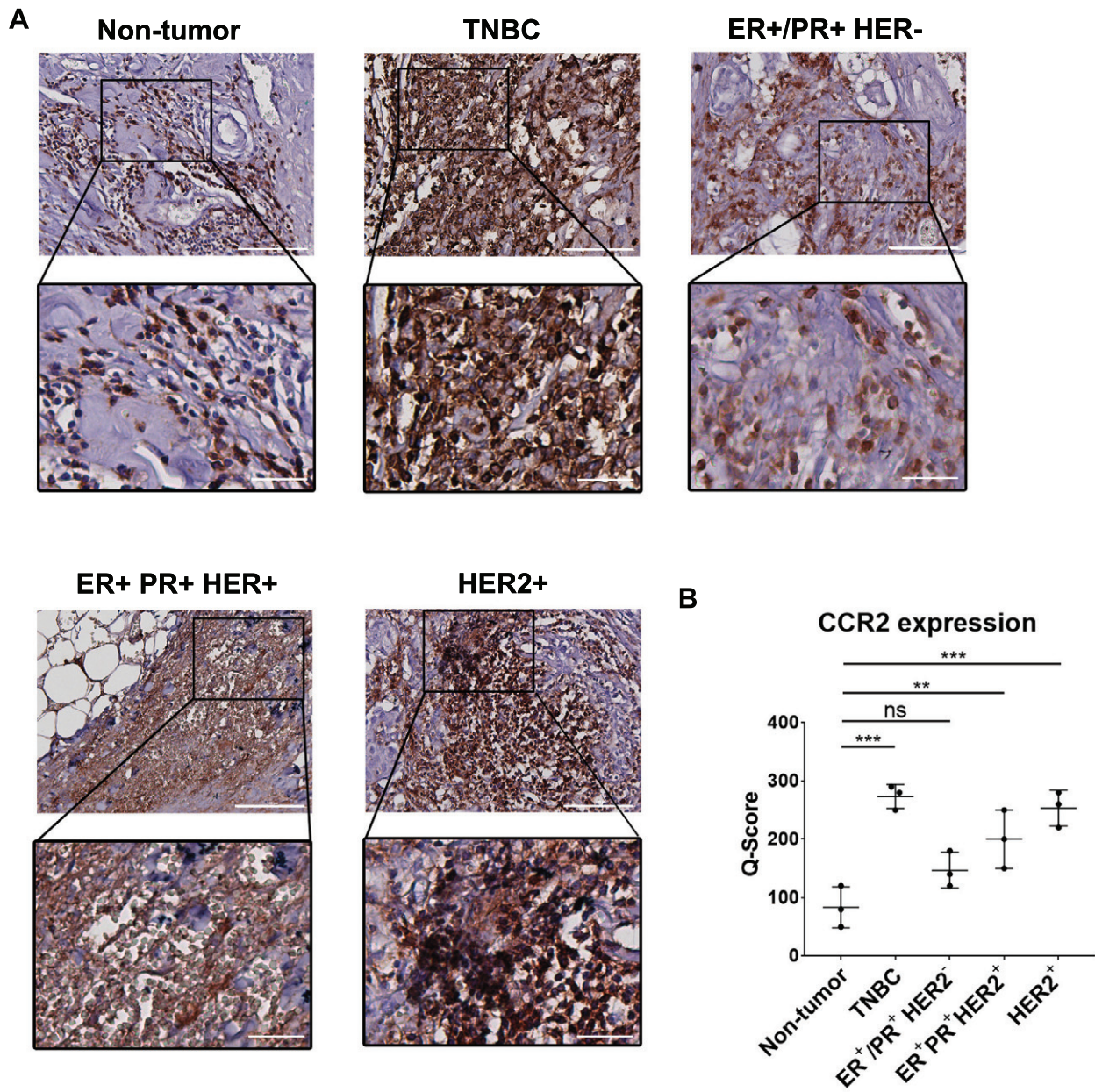


Figure S9

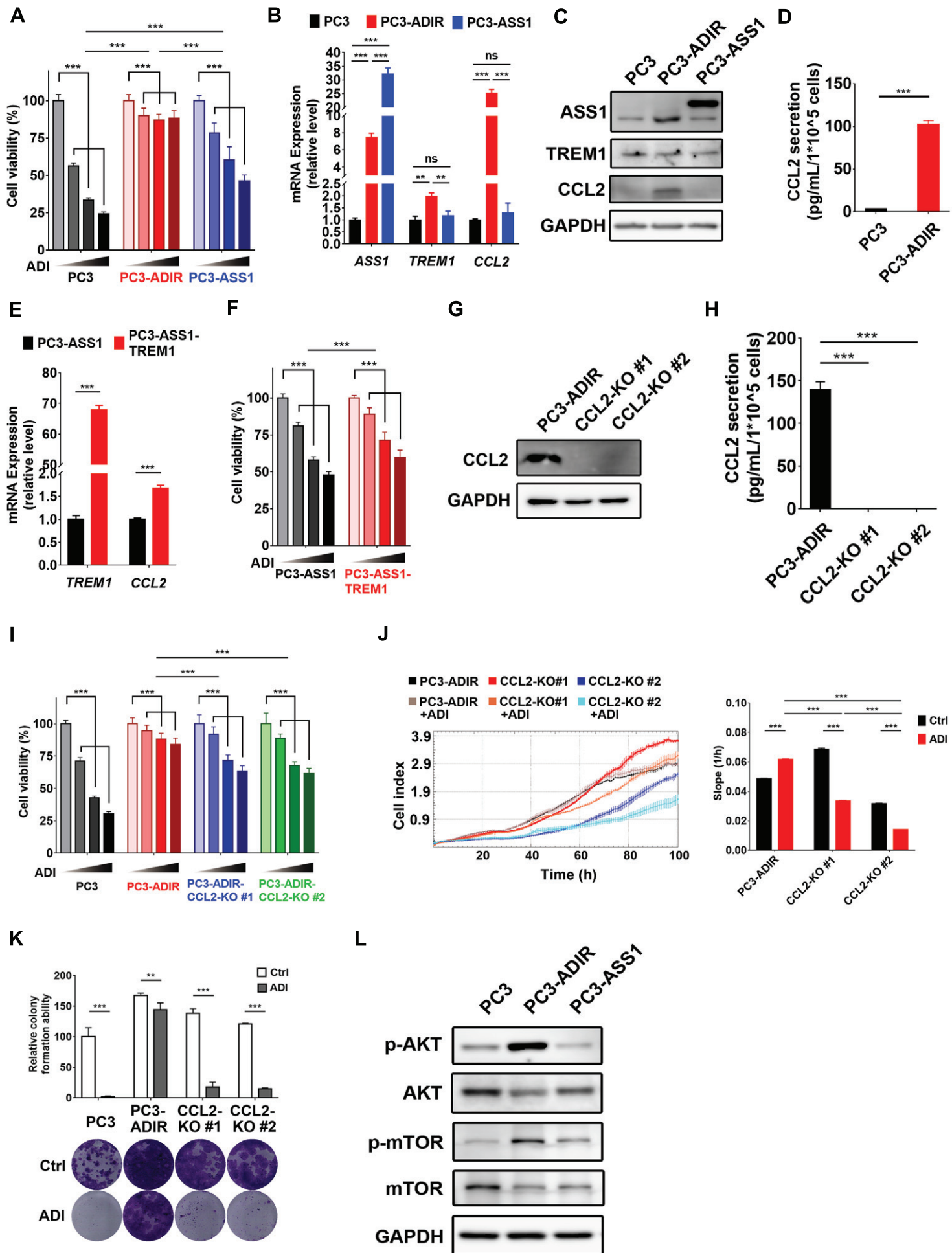


Table S1. Primers used for real-time PCR

Gene	QPCR primer sequence
RPLP0	Forward sequence 5'-TGG TCA TCC AGC AGG TGT TCG A-3'
	Reverse sequence 5'-ACA GAC ACT GGC AAC ATT GCG G-3'
ASS1	Forward sequence 5'-GAG GAT GCC TGA ATT CTA CA-3'
	Reverse sequence 5'-GTT GGT CAC CTT CAC AGG-3'
CCL2	Forward sequence 5'-AGA ATC ACC AGC AGC AAG TGT CC-3'
	Reverse sequence 5'-TCC TGA ACC CAC TTC TGC TTG G-3'
TREM1	Forward sequence 5'-CGA TGT CTC CAC TCC TGA CTC T-3'
	Reverse sequence 5'-CAG CAA ACA GGA CAG AGA AGA CC-3'

Table S2. shRNA clones used in this study

TRC clone	Clone ID	Target sequence
pLKO-shTREM1 #1	TRCN0000056753	CCGGTGTTC AACATTGTCATT
pLKO-shTREM1 #3	TRCN0000373808	GGCAGACCCTGGATGTGAAAT
pLKO-shASS1 #1	TRCN0000440576	CCCAAGTACAGGCGCTAATTG
pLKO-shASS1 #2	TRCN0000443685	ACGCAAAGCAACACGGGATTC
pLKO-shCCL2 #1	TRCN0000006279	GATGTGAAACATTATGCCTTA
pLKO-shCCL2 #2	TRCN0000006280	GCTGTTATAACTTCACCAATA
pLKO-shAKT1	TRCN0000288786	GATCCTCAAGAAGGAAGTCAT
pLKO-shSTAT3 #1	TRCN0000020843	GCAAAGAATCACATGCCACTT
pLKO-shSTAT3 #2	TRCN0000020842	GCACAATCTACGAAGAATCAA

Table S3. Antibodies used for western blotting

Antibody	Catalog number	Manufacturer
Phospho-Stat3 (Tyr705)	9145	Cell Signaling Technology
Stat3	4904	Cell Signaling Technology
Phospho-AKT (Ser473)	9271	Cell Signaling Technology
AKT	9272	Cell Signaling Technology
Phospho-p44/42 MAPK (Erk1/2) (Thr202/Tyr204)	4370	Cell Signaling Technology
p44/42 MAPK (Erk1/2)	9102	Cell Signaling Technology
Phospho-MTOR (Ser2448)	2971	Cell Signaling Technology
MTOR	2972	Cell Signaling Technology
Cleaved Caspase-3 (Asp175)	9664	Cell Signaling Technology
Caspase-3	9662	Cell Signaling Technology
ASS1	ab77590	Abcam
CCL2	ab214819	Abcam
TREM1	314902	Biolegend