

Table S1. Model coefficients are depicted for the preoperative and postoperative model.

Variable	Coefficient
Preoperative Model	
Intercept	-2.20204
Diabetes	1.00214
Repeat hepatectomy	1.71543
ALT	0.01014
Non-HCC	1.10619
MILL approach	-1.32158
Postoperative model	
Intercept	-3.95018
Diabetes	0.84134
Repeat hepatectomy	1.93562
ALT	0.0092
MILL approach	-0.99688
Length of surgery	0.00725
Conversion performed	3.19237

Pattern

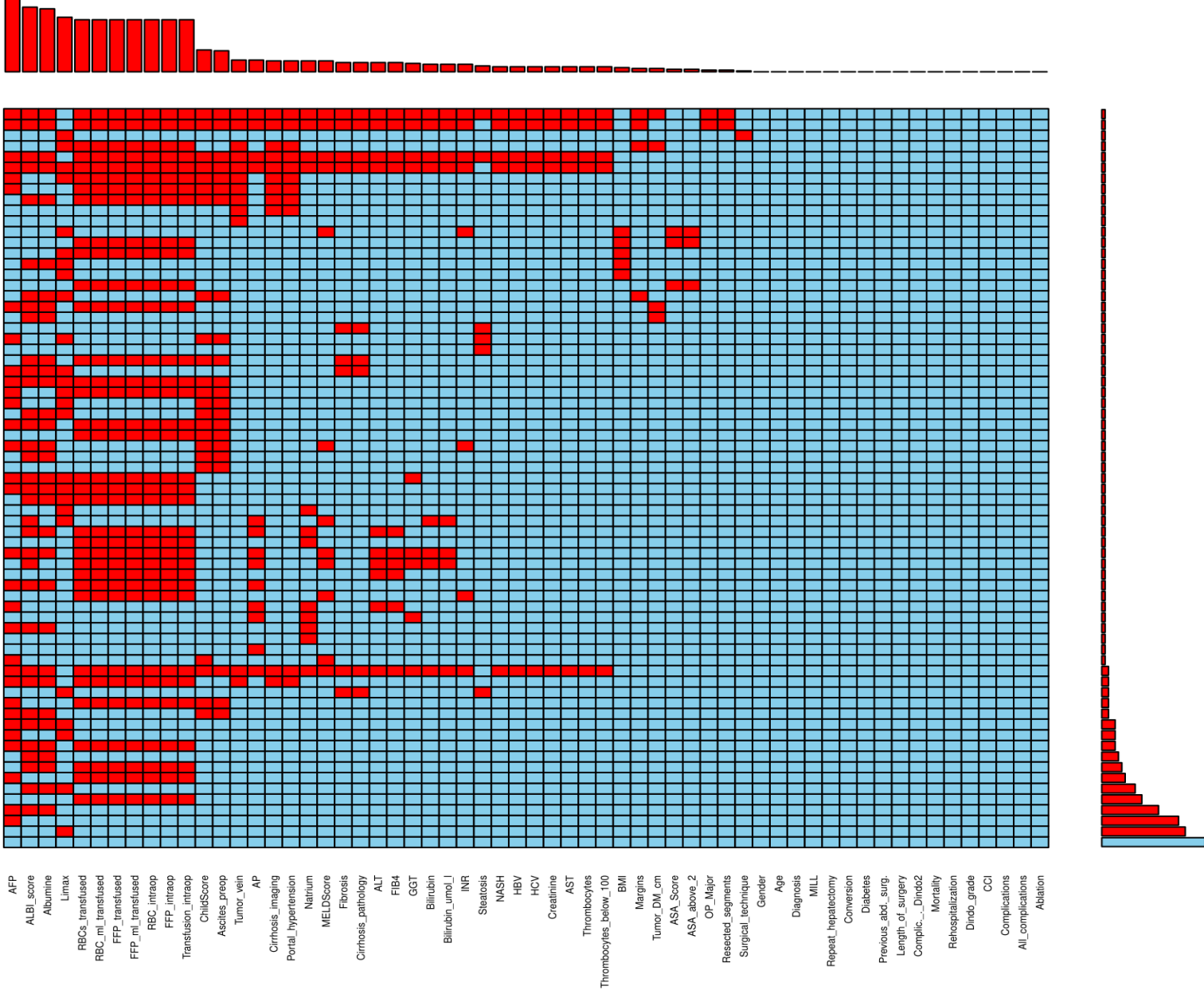


Figure S1. Missing data. Patterns of missing data are depicted in red, available data in light blue. Columns represent individual variables, whereas rows represent distinct patterns of missing information. Frequency of the observed pattern is depicted in each row. Most frequently missing data were AFP and ALBI score. Imputation of missing data was performed using the R mice package with 20 imputed datasets that were used to generate the models.

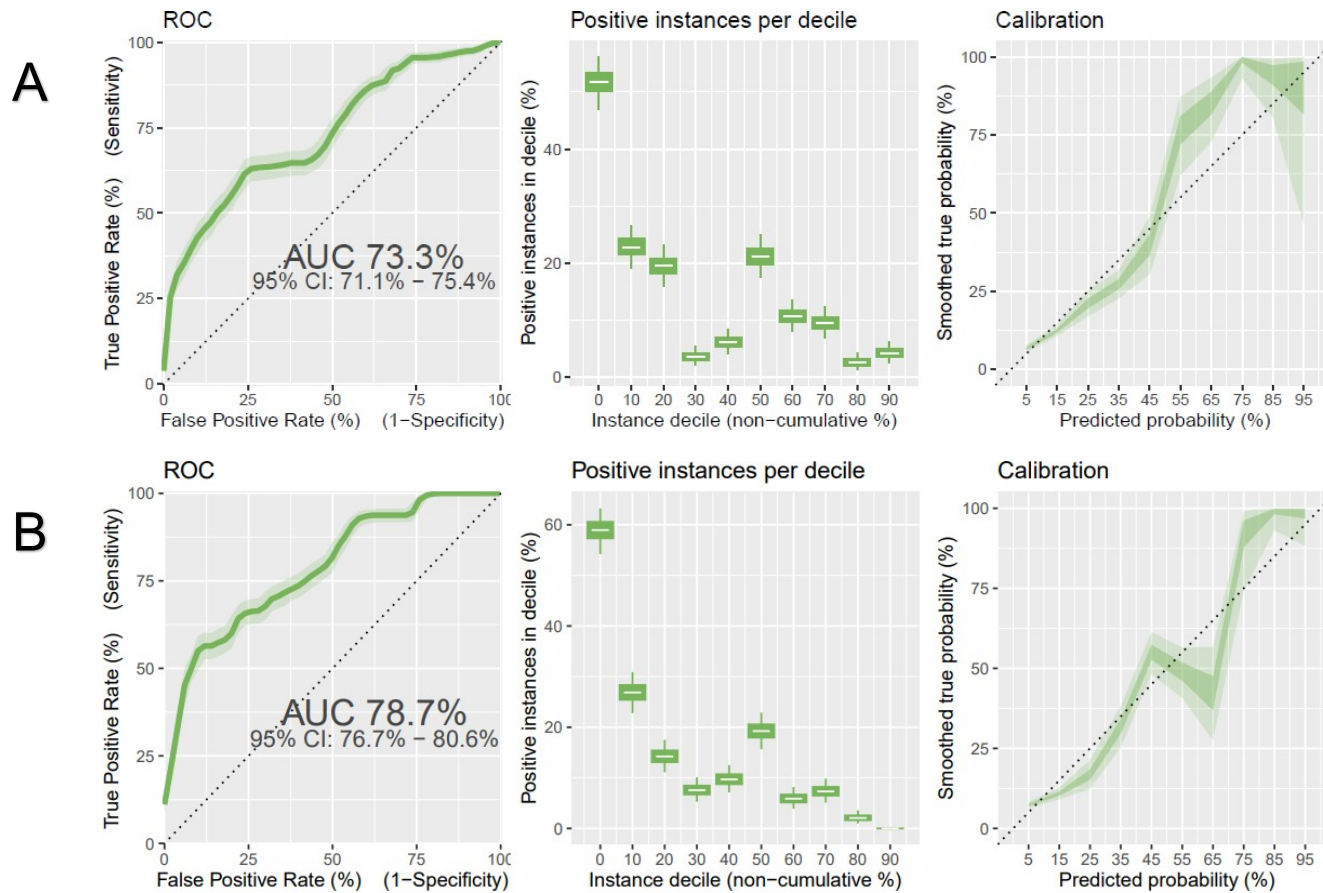


Figure S2. Model calibration. Calibration plots of the preoperative (**A**) and postoperative model (**B**). ROC curves as well as calibration plots with probabilities cut to deciles and as continuous variables are shown.

