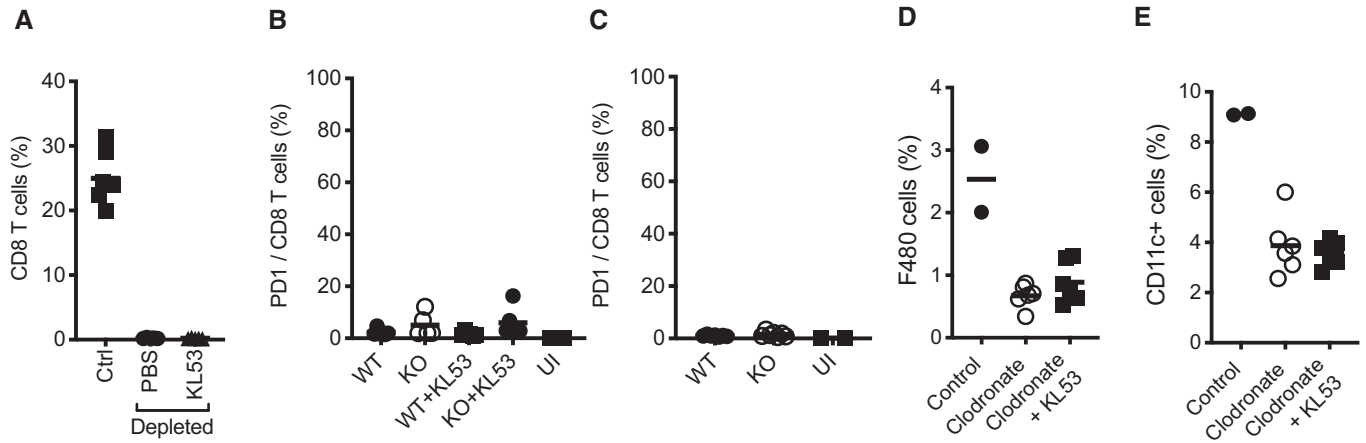
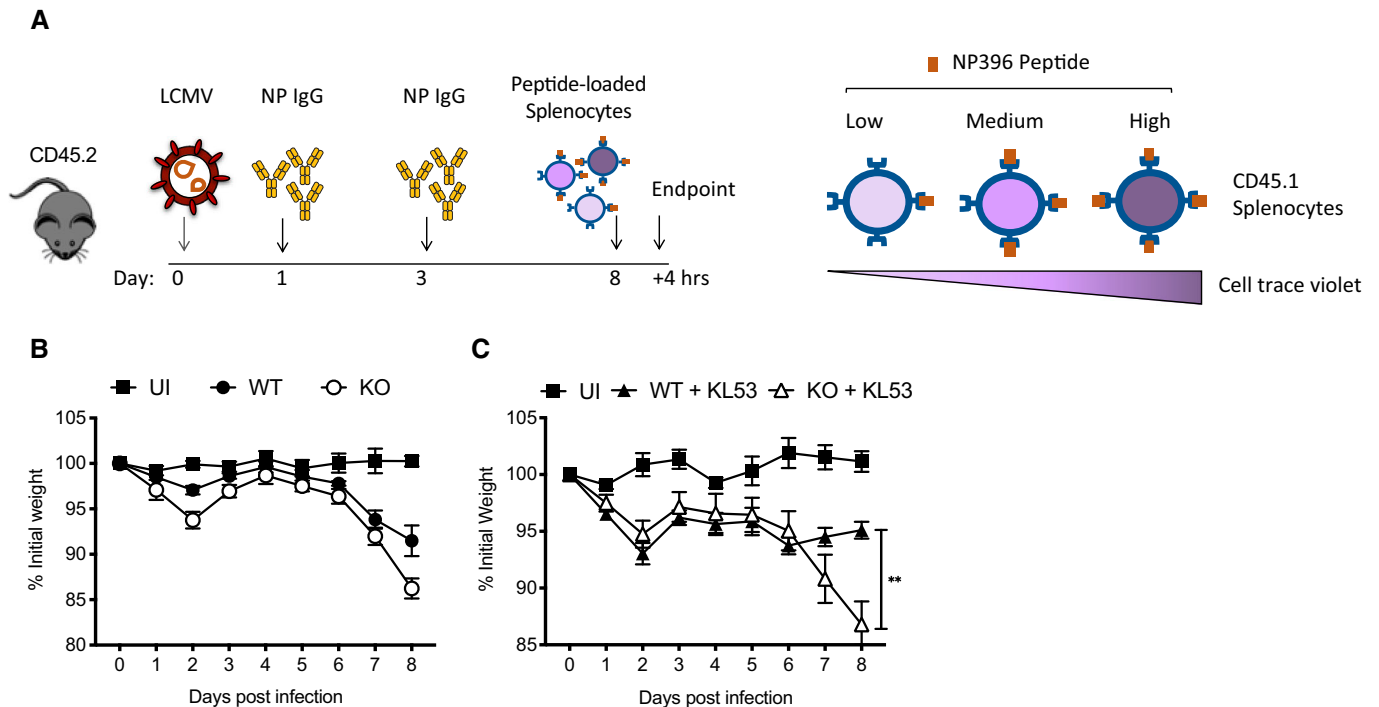


## Expanded View Figures



**Figure EV1. Extended CTL analysis from WT and KO mice infected with LCMV.**

A Effective depletion of CD8 T cells in the spleen 9 days post anti-CD8 mAb administration, in mice infected with LCMV and receiving either KL53 or PBS days 1 and day 3pi.  
 B, C Surface expression of PD-1 on CD8 T cells of WT and KO mice either (B) day 8pi in the presence or absence of KL53 or (C) day 10pi in naïve mice only.  
 D, E Effective depletion of macrophages in the spleen using clodronate liposomes, as measured by surface expression of F480 (D) and CD11c (E) by flow cytometry.  
 Data information: Each data point represents once mouse from the same experiment. The horizontal bars correspond to the mean  $\pm$  standard error.



**Figure EV2.**

**Figure EV2. Experimental detail of *in vivo* killing assay.**

- A Timeline of *in vivo* killing protocol, and diagram of pulse-labelling of CD45.1 splenocytes with different concentrations of N<sub>396</sub> peptide and staining with cell trace violet.
- B Weights of WT and KO mice infected with LCMV which received pulsed-labelled splenocytes 8dpi for *in vivo* killing experiment shown in Fig 4A.
- C Weights of WT and KO mice infected with LCMV then passively transferred with KL53 that received pulsed-labelled splenocytes 8dpi for *in vivo* killing experiment shown in Fig 4B.

Data information: All data are presented as mean with standard error ( $n = 6$ ). \*\* $P < 0.01$ , unpaired  $t$ -test.