

Supplementary Materials

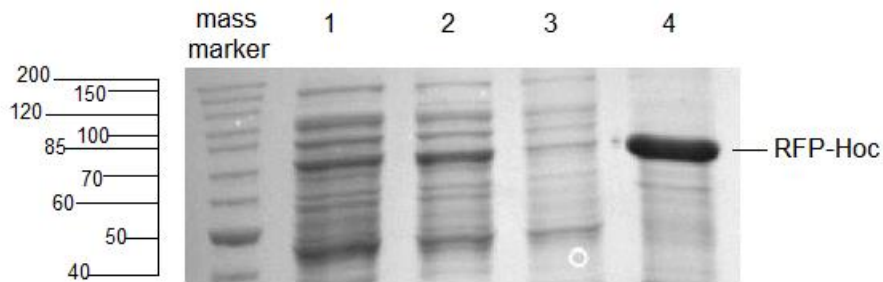


Figure S1. Expression of recombinant RFP-Hoc fusion in *E. coli*. Expression plasmids containing *RFP-hoc* fusion were tested for their effectiveness in production of RFP-Hoc proteins as showed by SDS-PAGE. 1- soluble fraction of the culture before induction (control), 2- soluble fraction of the culture after induction (expression), 3- insoluble fraction of the culture before induction (control), 4- insoluble fraction of the culture after induction (expression).

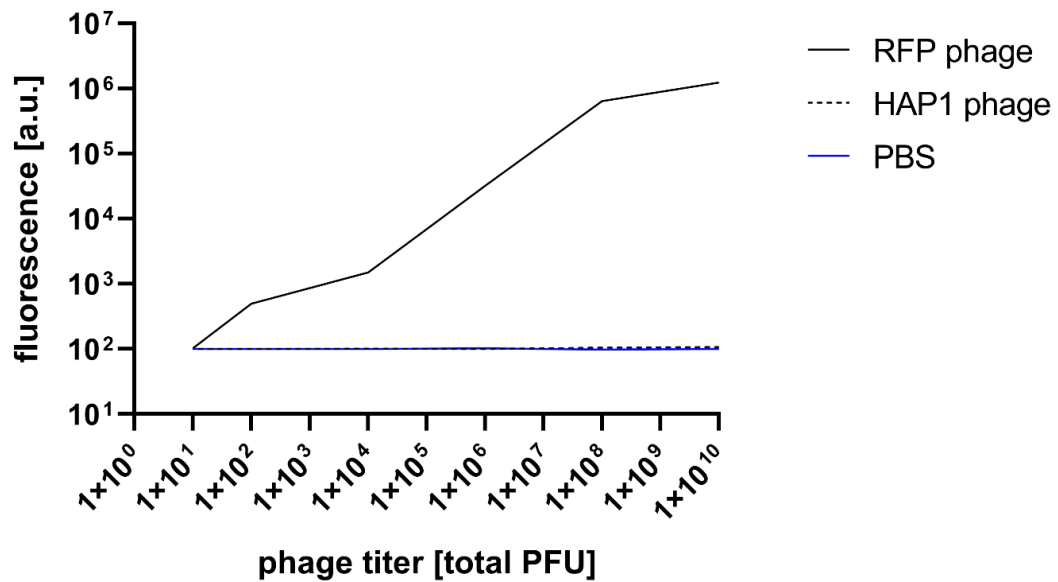


Figure S2. Phage fluorescence of RFP phage (RFP.Hoc.HAP1 - phage labelled with RFP) and HAP1 phage (control phage - non-labelled) in correlation to the phage titer. The fluorescence of pure PBS was also measured (PBS control, blue line).