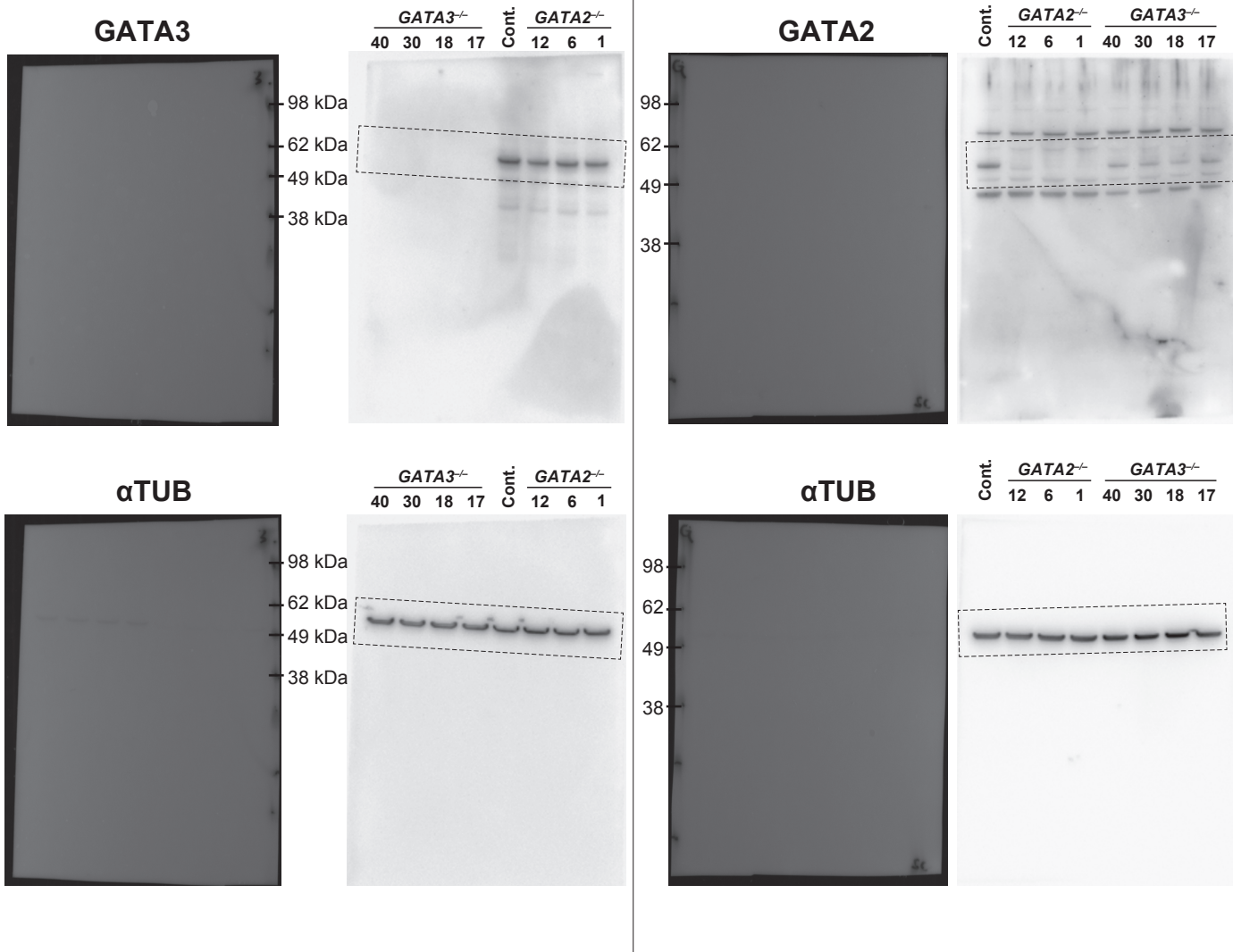


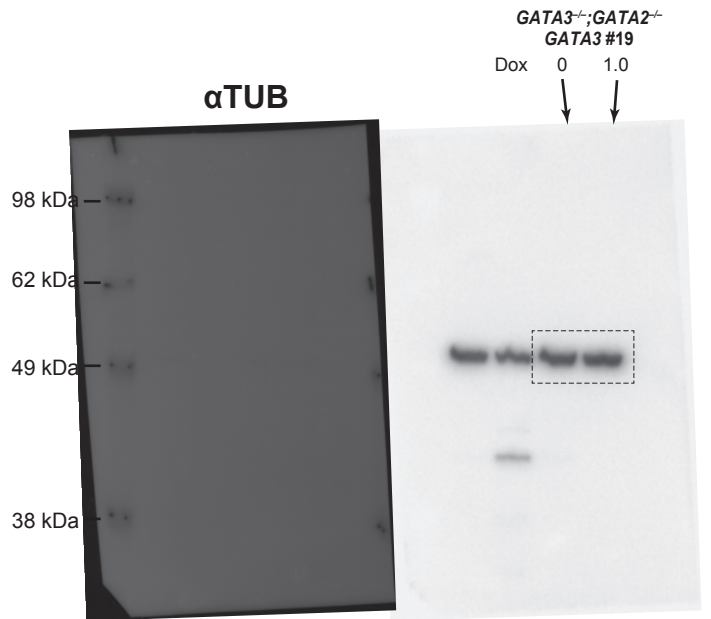
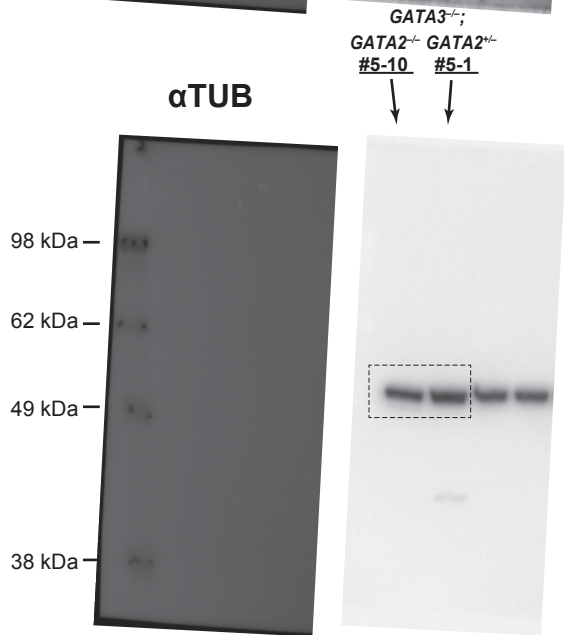
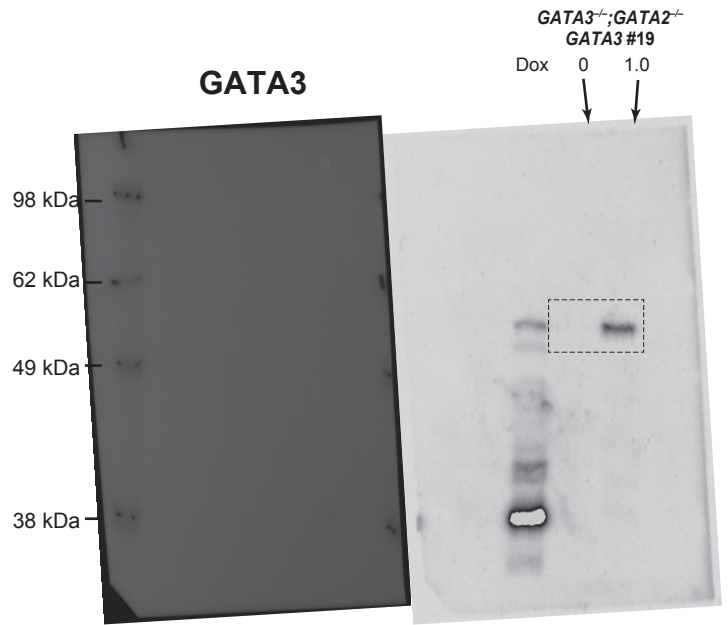
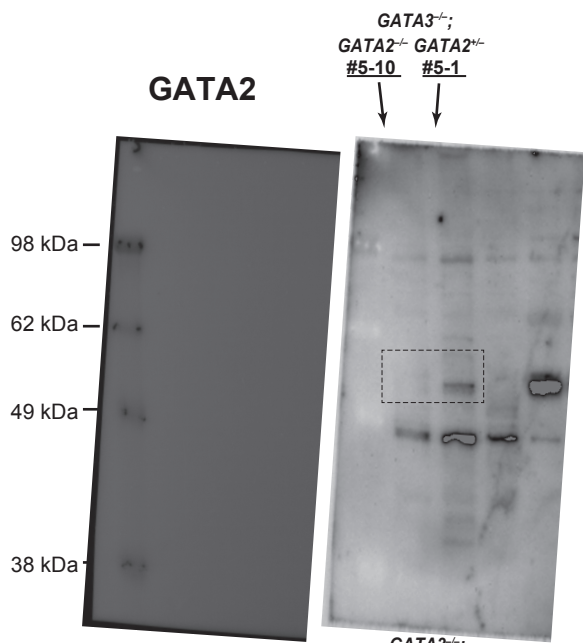
Source images for Figure S1B

Original photographs of the full membranes of the Western blottings for α -TUBULIN, TFAP2C, SOX17 and BLIMP1 in the SOX17/TFAP2C/BLIMP1 clone. The areas used for Figure S1B are indicated by boxes with dotted lines.



Source images for Figure S4B

Original photographs of the full membranes of the Western blottings for GATA3, GATA2 and α -TUBULIN in the *GATA3*^{-/-} and *GATA2*^{-/-} clones. The areas used for Figure S4B are indicated by boxes with dotted lines.



Source images for Figure S4B

Original photographs of the full membranes of the Western blotting for GATA2, GATA3 and α -TUBULIN in GATA3^{-/-};GATA2^{+/-} #5-1, GATA3^{-/-};GATA2^{+/-} #5-10 and GATA3^{+/-};GATA2^{+/-};GATA3 #19 clones. The areas used for Figure S4B are indicated by boxes with dotted lines.