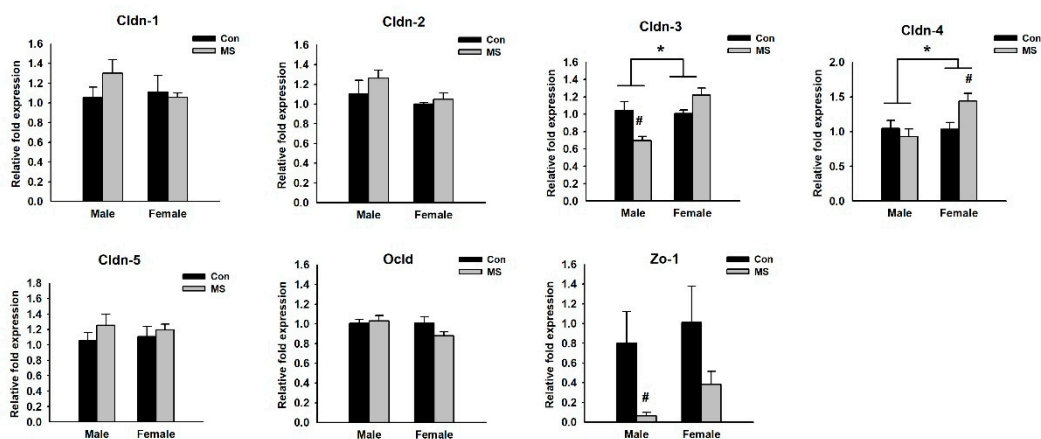


Table S1. Primer sequences used for qRT-PCR.

Gene		5'→3'
Ido-1	Sense	TTAAGACGCAATGAAGACT
	Anti-sense	GAGGTGGAACATTCTGAG
Ido-2	Sense	ACGACGACGATGATGATA
	Anti-sense	GGCTGAAGGATAGTAAGATAC
Tdo-1	Sense	TTCCAGAGTCTTCAGTTC
	Anti-sense	CTCATTGTAGTCTCCTTCA
Zo-1	Sense	GCATTATTCGCCTTCATACAA
	Anti-sense	ACACAACAATCGGATACCA
Gapdh	Sense	AGTGGCAAAGTGGAGATT
	Anti-sense	GTGGAGTCATACTGGAACA
Ubc	Sense	AGAAGGTCAAACAGGAAGATA
	Anti-sense	CCAAGAACAAGCACAAAGAA

Colon



Hippocampus

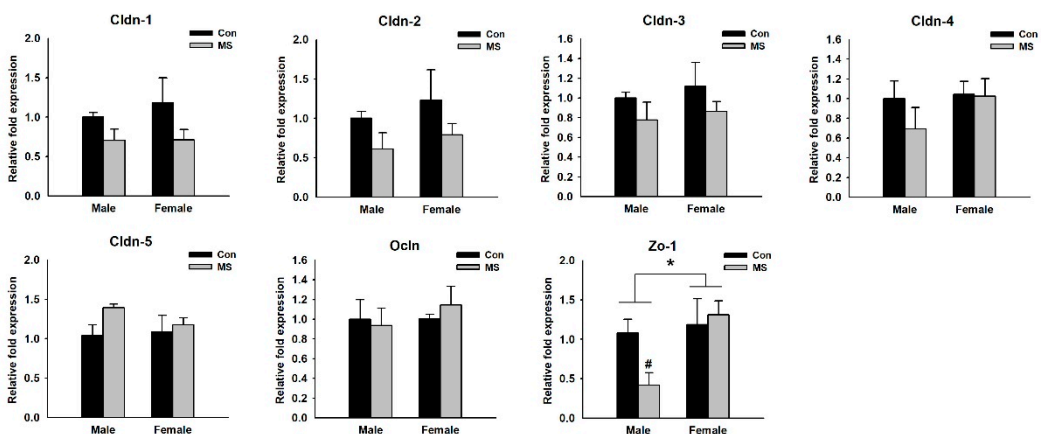


Figure S1. The mRNA expression of occludin (Ocln) and claudin (Cldn) 1-5 genes in the colon and hippocampus of maternal separation (MS) rats. The mRNA expression was detected through qRT-PCR using specific primers. Data are expressed as mean \pm SEM. A two-way ANOVA test, * $p < 0.05$ on male vs. female; # $p < 0.05$ on control vs. MS within each sex. $n = 10$ per group in the colon, $n = 6$ per group in the hippocampus.

Cldn1, 5'-AGACCAGACTTCCTTACGA-3'; 5'-TAGAATCAAGCCTCAGAA-TAACA-3'
 Cldn2, 5'-TTCATCCTTGGTGGTATC-3'; 5'-CAGTGGTGAGTAGAAGTC-3'
 Cldn3, 5'-CCACACGCACACACATAT-3'; 5'-CCCAACCCTCTTCACCAT-3'
 Cldn4, 5'-GCCAGCAACTATGTGTAAG-3'; 5'-GCCGTTATGAGTTCAATCC-3'
 Cldn5, 5'-GCTCAGAACAGACTACAG-3'; 5'-AATCTTAGAGTTCCACCAT-3'
 Oold, 5'-TTGCTTCATCGCTTCCTT-3'; 5'-TCAAGTAGTATCTTCTCGTTCTG-3'
 ZO-1, 5'-GCATTATTCGCCTTCATACAA-3'; 5'-ACACAACAATCGGATACCA-3'

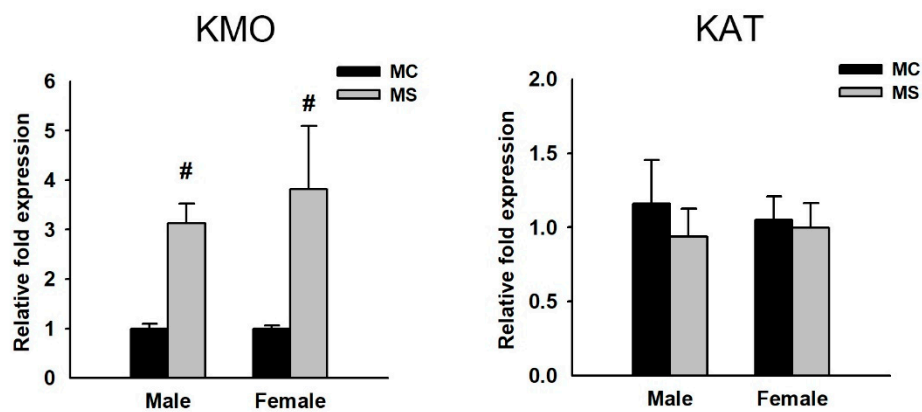


Figure S2. The mRNA expression of kynurenine 3-monooxygenase (Kmo) and kynurenine aminotransferase (Kat) in the hippocampus of maternal separation (MS) rats. The mRNA expression was detected through qRT-PCR using specific primers (Kmo, 5'-TTGAAGACTGCTTGGTATT-3' and 5'-GCTCGCATCTCTATGTAAT-3'; Kat, 5'-CTTGATTATAGGATGAGAG-3' and 5'-GAATGATAACAGCAGGAGAT-3'). Data are expressed as mean \pm SEM. A two-way ANOVA test, * $p < 0.05$ on male vs. female; # $p < 0.05$ on control vs. MS within each sex. $n = 6$ per group.