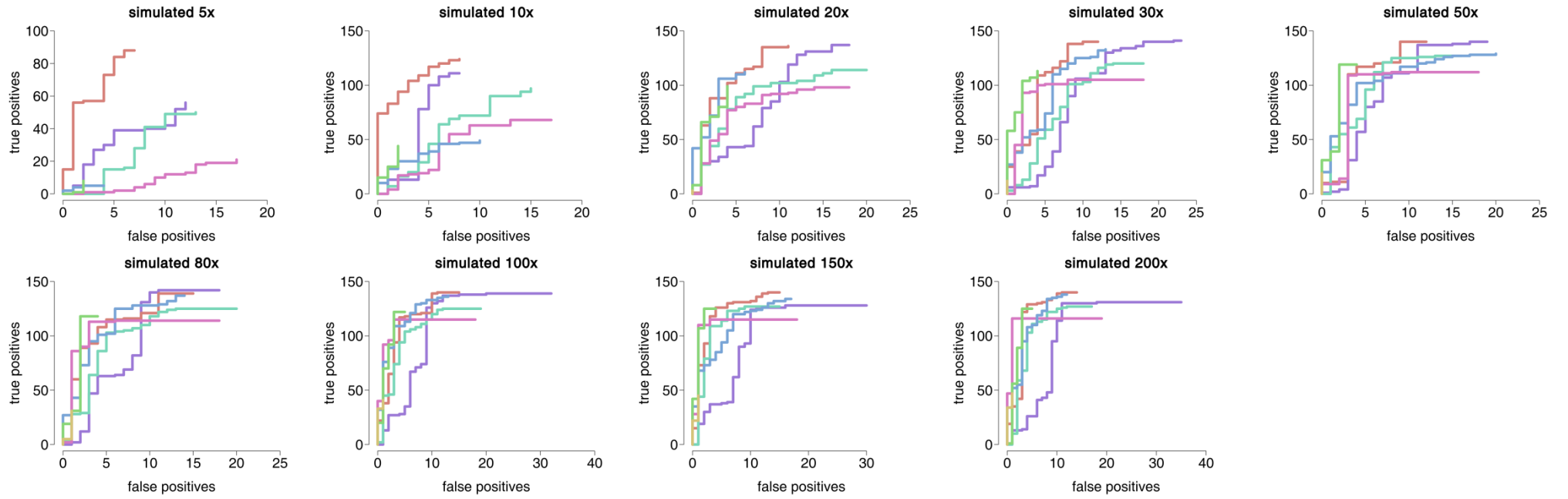
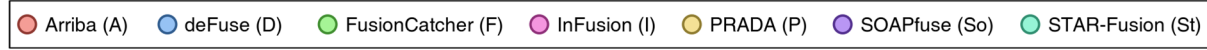
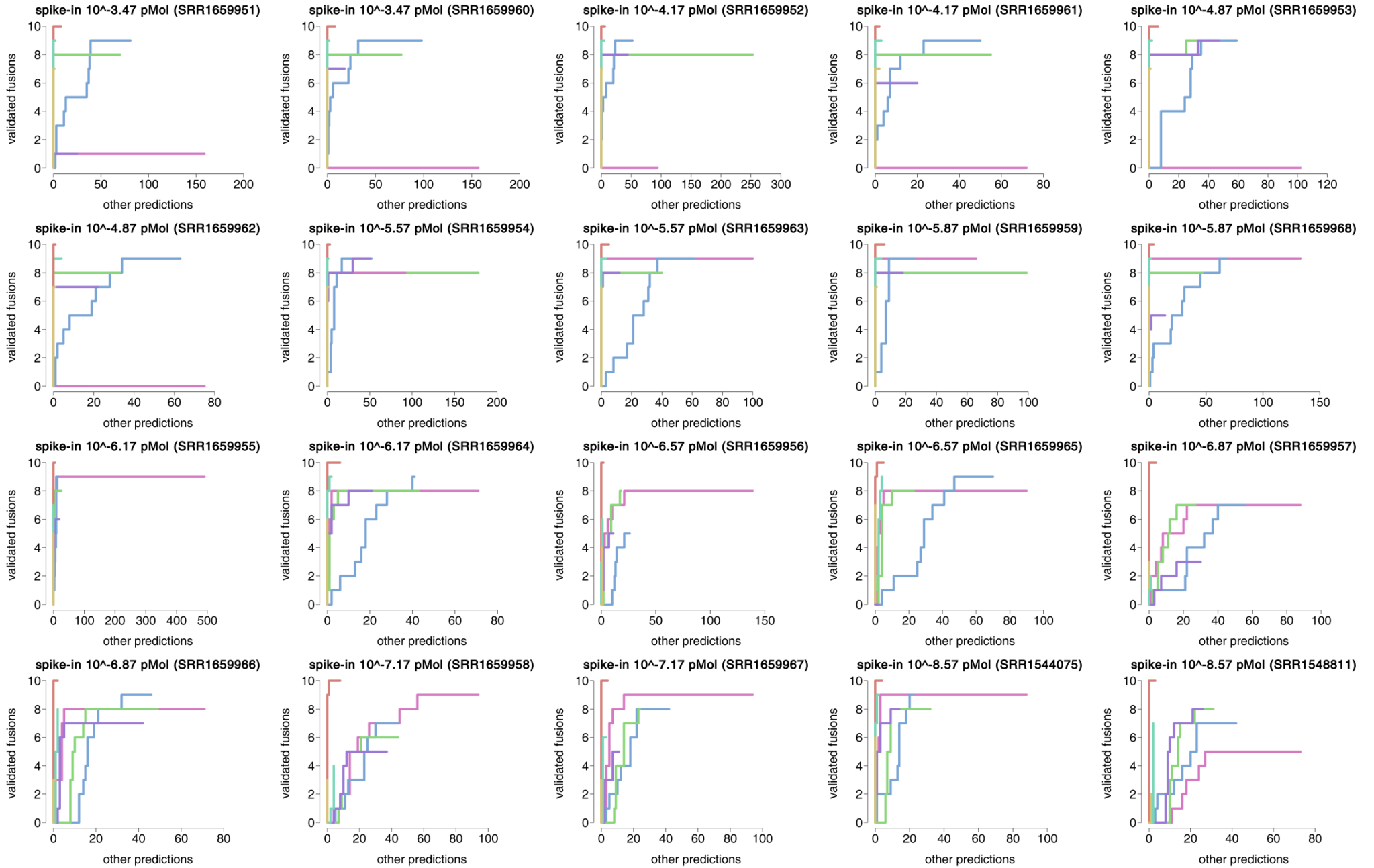
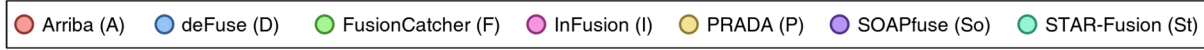
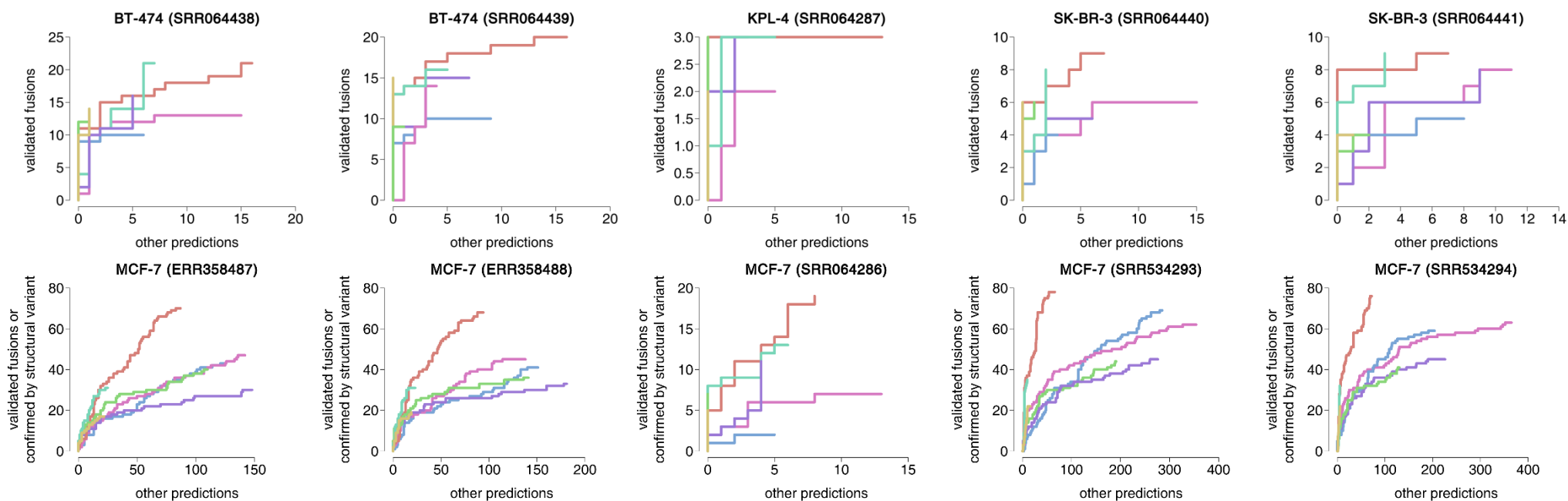


A

B

C



Supplemental Figure S1: Accuracy of all tools on all benchmark datasets.

The sensitivity/specificity trade-off is depicted using receiver operating characteristic (ROC)-like curves. The vertical axis indicates the number of true positives; the horizontal axis indicates the number of false positives (simulated dataset) or non-validated predictions (spike-in and cell line datasets). Only gene-to-gene fusions were considered. (A) Simulated data. (B) Spike-ins of synthetic fusions. (C) Cell lines.