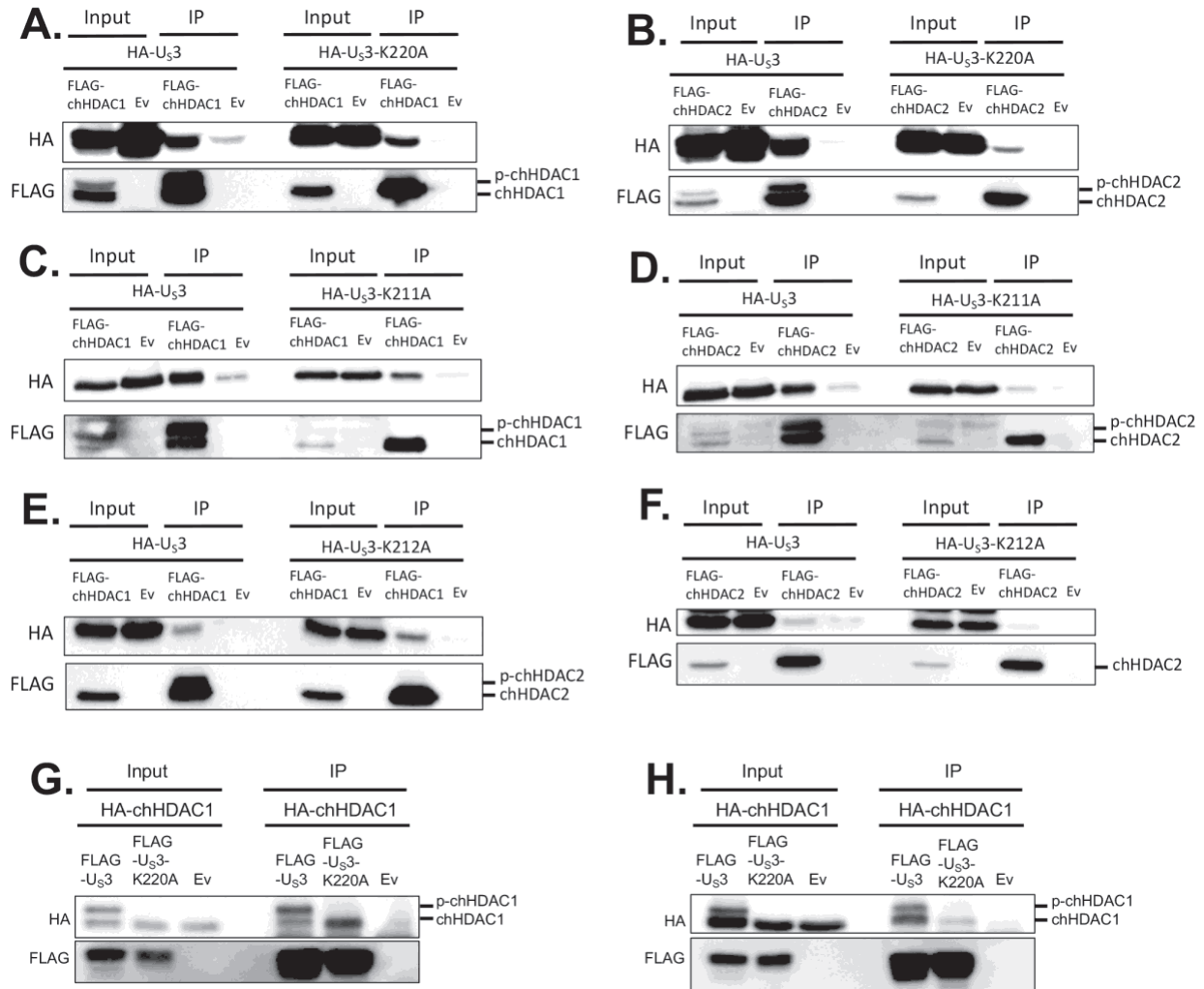


**S3 Fig**



**S3 Fig. MDV Us3 physically associates with chHDAC1 and 2.** pcDNA-FLAG-chHDAC1 and pcDNA empty vector (Ev) (A, C, E), or pcDNA-FLAG-chHDAC2 and pcDNA Ev (B, D, F) were co-transfected with pcDNA HA tagged MDV-1 Us3 or MDV-1 Us3-K220A (A, B), MDV-2 Us3 or MDV-2 Us3-K211A (C, D), or HVT Us3 or HVT Us3-K212A (E, F). Forty-eight hours later, cells were lysed and subjected to immunoprecipitation (IP) with mouse anti-FLAG agarose beads, followed by Western blot (WB) with HA and FLAG antibodies. pcDNA-FLAG-MDV-1-U<sub>s</sub>3, pcDNA-FLAG-MDV-1-U<sub>s</sub>3-K220A, or Ev were co-transfected with pcDNA-HA-chHDAC1 into CEF (G) or DF-1 (H) cells. After 48 hours, cells were lysed and subjected to IP with mouse anti-FLAG agarose beads. WB analysis was performed with HA and FLAG antibodies.