

Differential Function of a Novel Population of the CD19+CD24hiCD38hi Bregs in Psoriasis and Multiple Myeloma

Supplementary Materials:

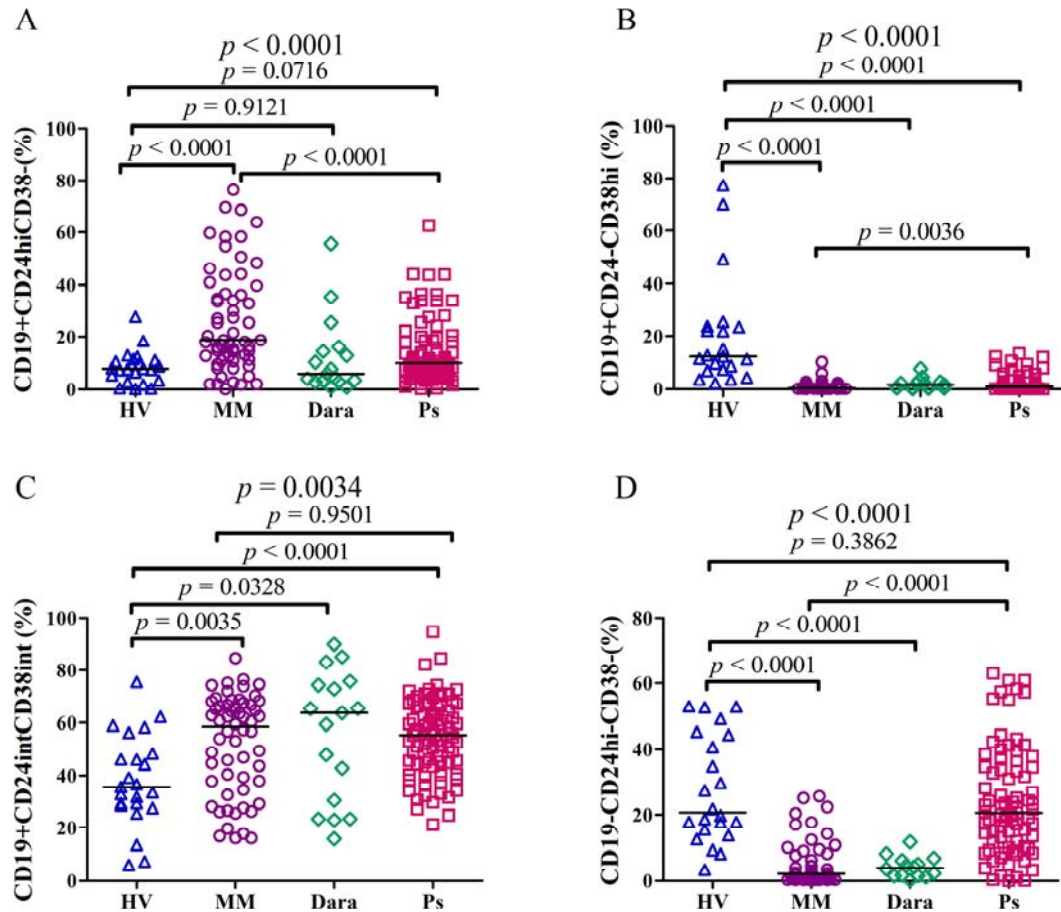


Figure S1. The comparison of percentages of other Breg subpopulations in HV, MM, Psoriatic and daratumumab patients: CD19+CD24hiCD38- (A), CD19+CD24-CD38hi (B), CD19+CD24intCD38int (C), CD19-CD24hi-CD38- (D).

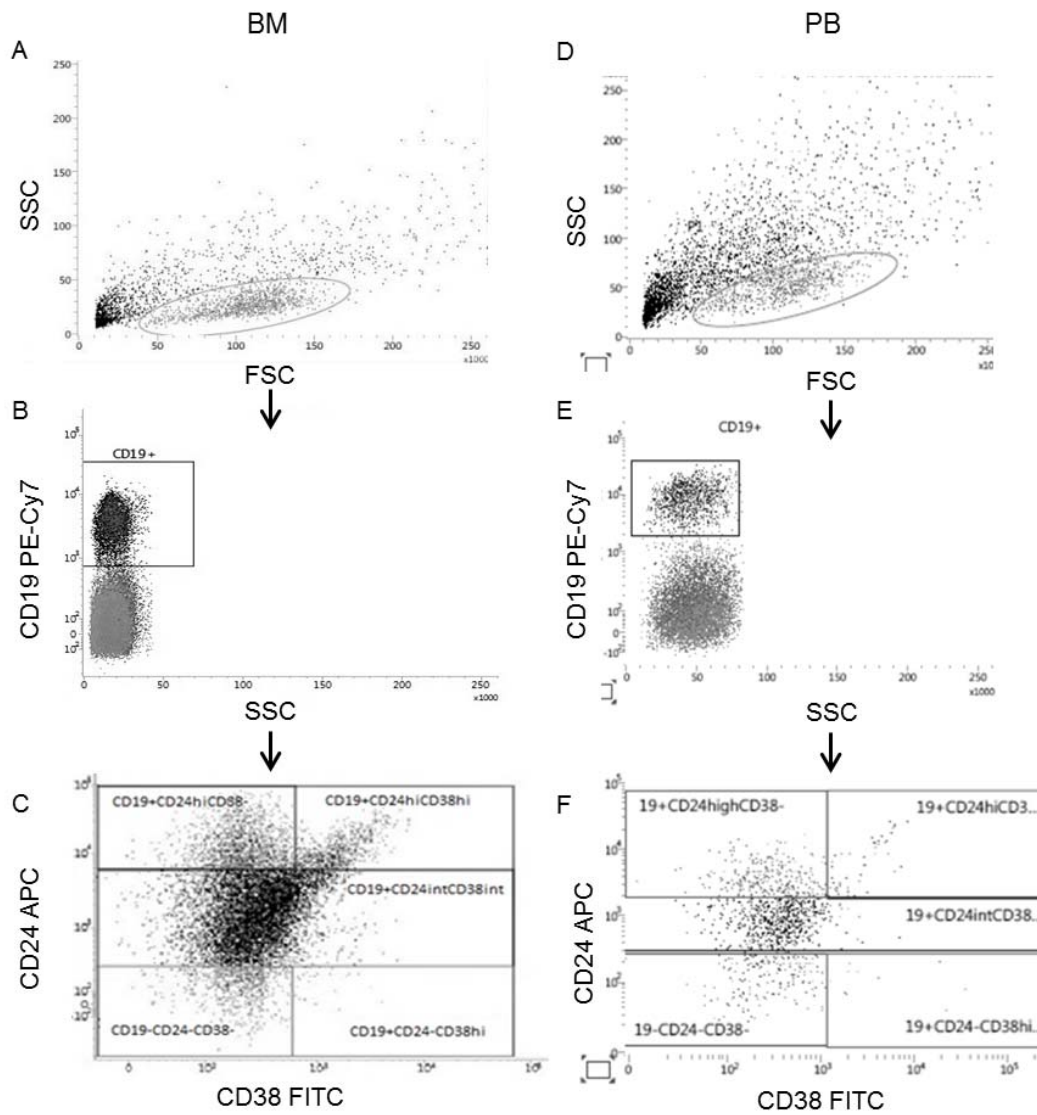


Figure S2. Gating strategy for evaluation of Breg cells in bone marrow (A–C) and peripheral blood (D–F). B cells gated from lymphocytes on SSC/FSC scatter dot plot (A,D), were defined as CD19+ lymphocytes. Within CD19+ B cells gate (B,E), CD24hiCD38hi cells were defined as CD24hiCD38hi Bregs (C,F).