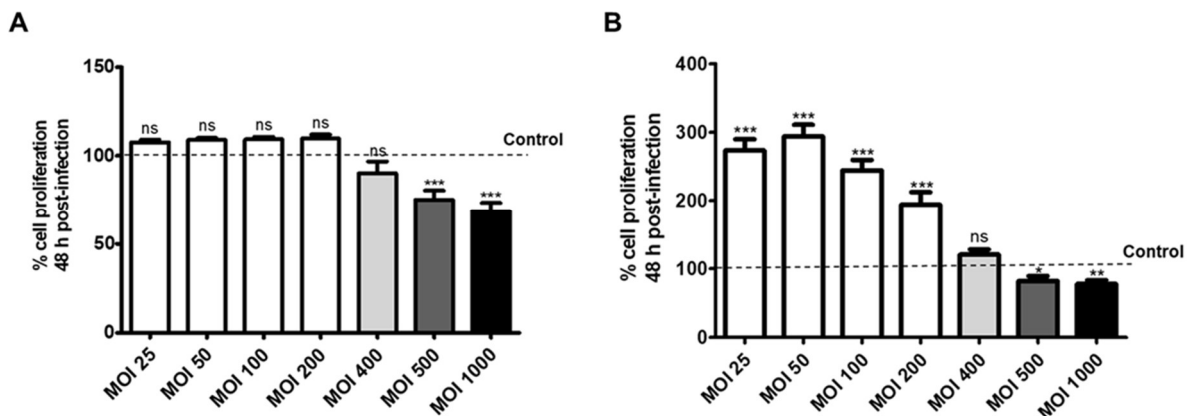


**Figure S1.** Cytokines released from THP-1 cells in co-culture with cell monolayers. Under co-culture condition (HT-29/B6-GR/MR cell monolayers with M1-macrophage-like THP-1 cells on the basal side), the cytokines released from differentiated THP-1 cells were quantified. The cytokines IFN- $\gamma$ , IL-13, IL-2 and IL-17A released from the infected cells (black bars) were compared to cytokines released from uninfected controls (bright grey bars) ( $n = 6$  in two independent experiments,  $ns =$  not significant). The cell monolayers were infected with *Campylobacter concisus* at MOI of 200 on both apical and basal side.



**Figure S2.** Cell viability in *Campylobacter concisus*-infected HT-29/B6-GR/MR cells and macrophage-like THP-1 cells 48 h post infection. Absorbance values recorded at 450 nm with a reference wavelength of 600 nm in controls and *C. concisus*-infected cells at different MOI ranging from 25 to 1000. Percentage of increase or decrease in cell proliferation was estimated after normalizing the absorbance values with controls. (A) HT-29/B6-GR/MR cells. (B) M1-macrophage-like THP-1 cells (WST-8 in the CCK8 assay;  $n = 4-17$  in two to three independent experiments,  $ns =$  not significant,  $*** p < 0.001$ ,  $** p < 0.01$ ,  $* p < 0.05$ ).