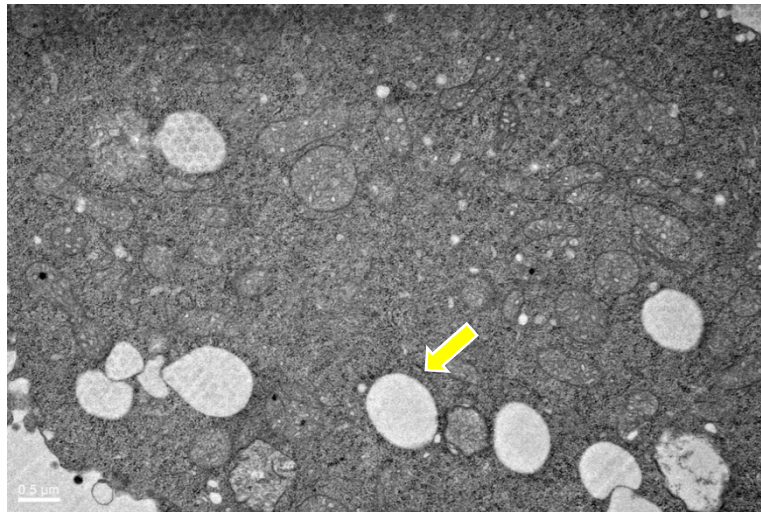


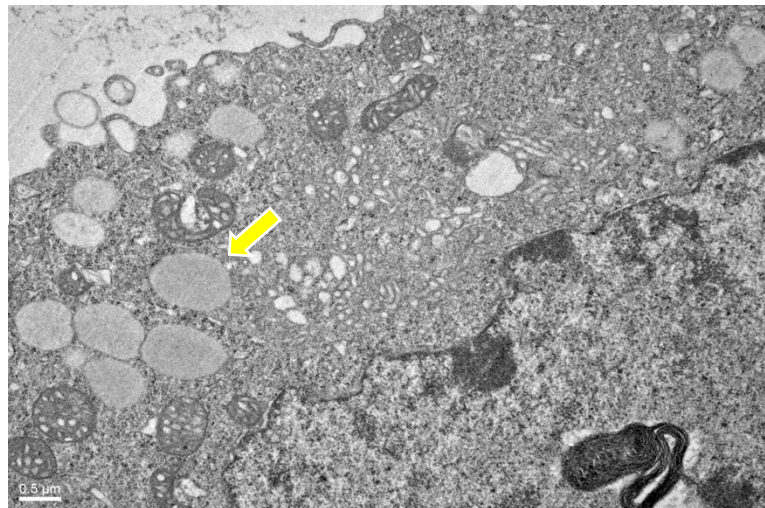
# Role of Constitutive STAR in Leydig Cells

Melanie Galano, Yuchang Li, Lu Li, Chantal Sottas and Vassilios Papadopoulos

MA-10



STARKO1



**Figure S1.** Electron microscopy images of lipid droplets in WT MA-10 cells (top) and STARKO1 cells (bottom). Arrows point to lipid droplets. Scale bar shows 0.5 μm.