



Supplementary Information for
Pandemic Precarity: COVID-19 Is Exposing and Exacerbating
Inequalities in The American Heartland

Brea L. Perry^a
Brian Aronson^a
Bernice A. Pescosolido^{a*}

^a Department of Sociology, Indiana University, Bloomington, IN 47405

* Bernice A. Pescosolido, Dept. of Sociology, Indiana University, Bloomington, IN
47405

Email: pescosol@indiana.edu

This PDF file includes:

Supplementary text
Figures S1 to Sx (not allowed for Brief Reports)
Tables S1 to Sx (not allowed for Brief Reports)
SI References

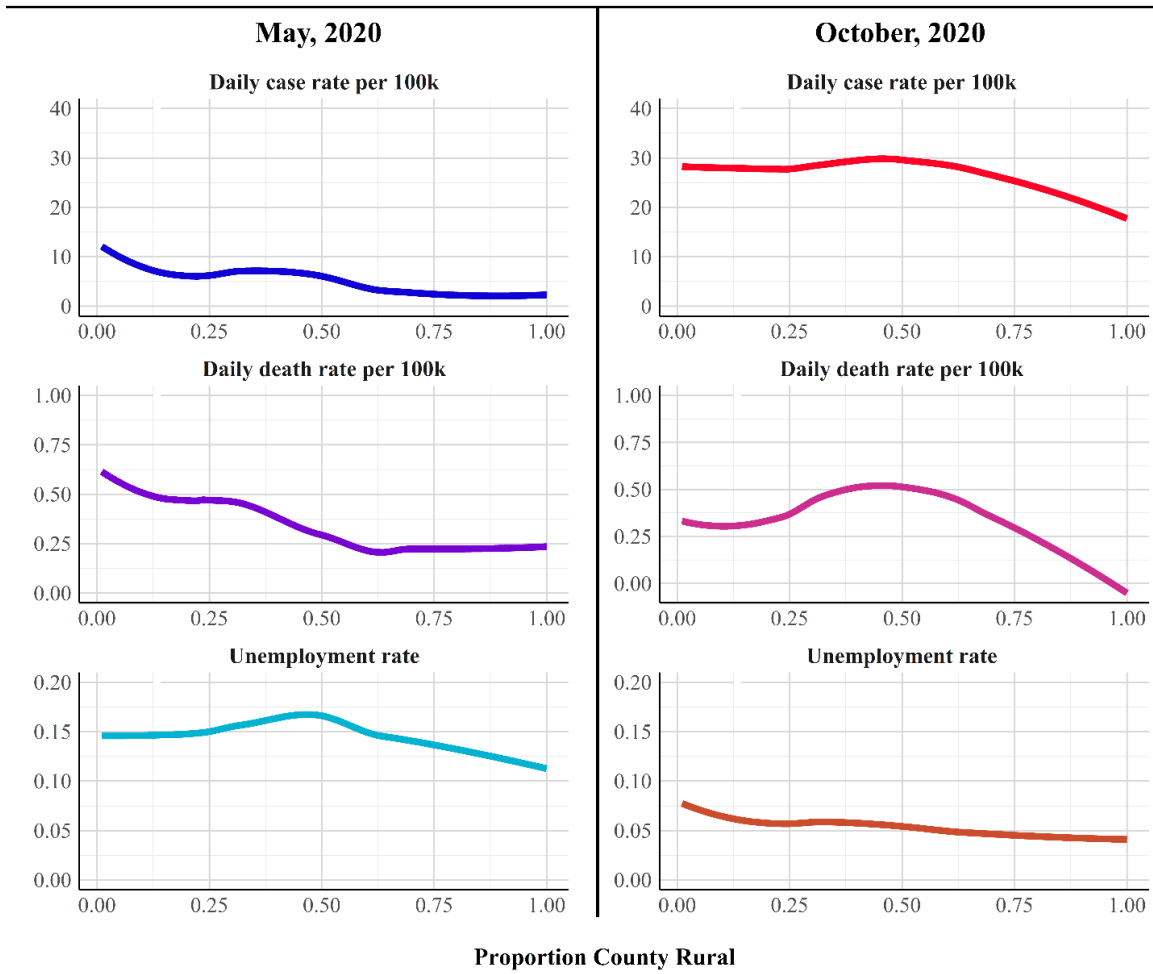


Fig. S1. Multivariate relationships between rurality and COVID-19 in Indiana during sample period and six months later

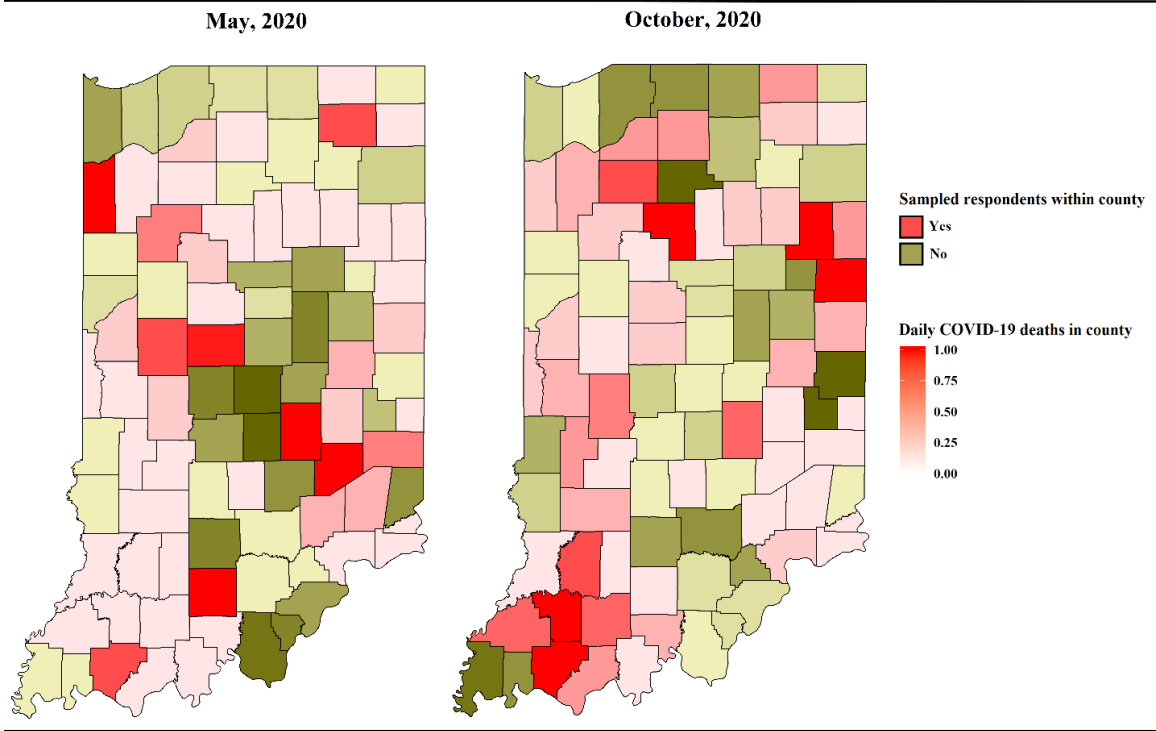


Figure S2. Geographic distribution of COVID-19 in Indiana during sample period and six months later

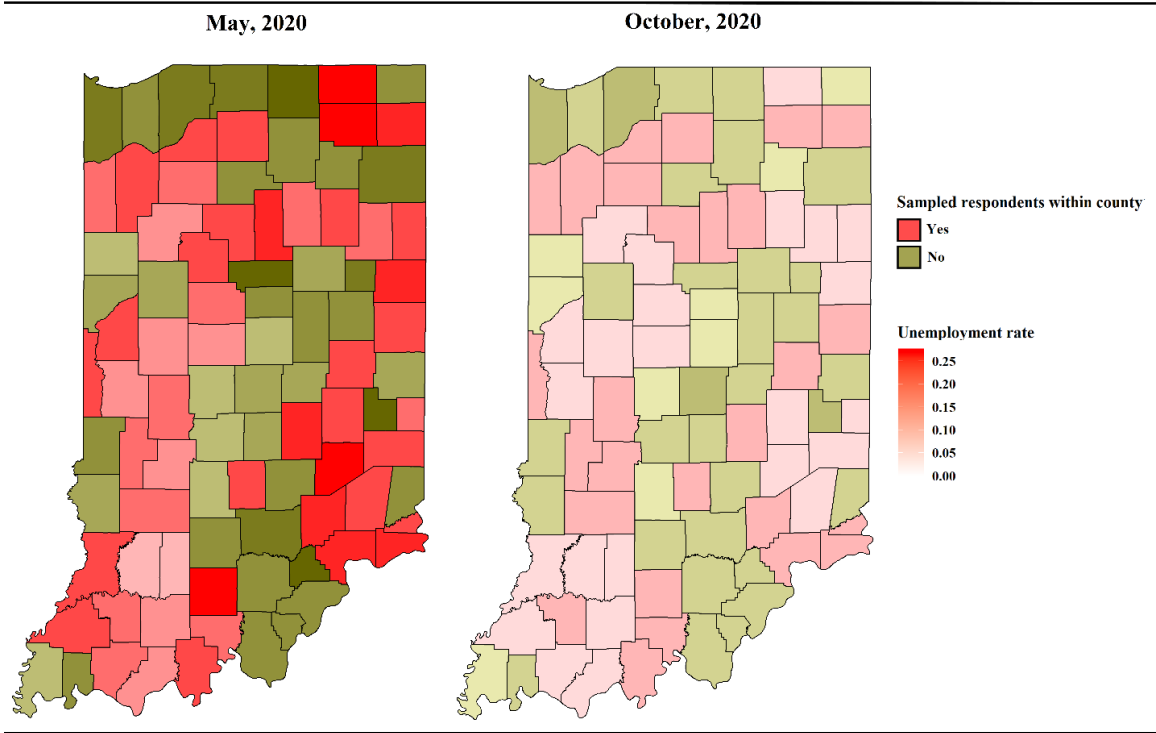


Fig. S3. Geographic distribution of unemployment in Indiana during sample period and six months later

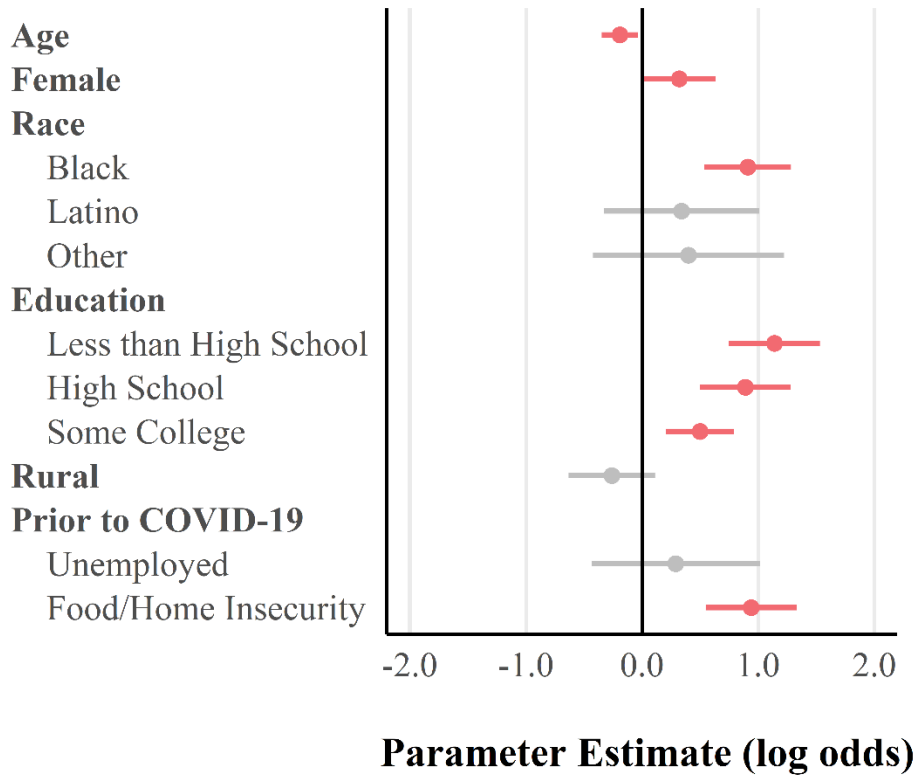


Fig. S4. Adjusted Parameter Estimates for Disparities in COVID-19 S2-S5Precarity, Person to Person Health Interview Survey (n=994)

Notes: Financial strain index (Chronbach's alpha = 0.76) based on each respondent's agreement to questions regarding their food, financial, and home insecurity. Dots represent parameter estimates and lines represent 95% confidence intervals. Colored dots indicate statistically significant parameter estimates; grey dots indicate non-significant parameter estimates. Model estimated with ordinal logistic regression. Model adjusted by sample weights and standard errors clustered by shared county. Race reference category = white. Education reference category = bachelors.

Table S1. COVID-19 context within sampled counties and entire state of Indiana

Population	Daily Cases	Daily Deaths	Unemployed
<i>3/28/2020 - 5/31/2020</i>			
Indiana	526	32	14.40%
Sample	428	27	14.44%
<i>9/28/2020 - 10/31/2020</i>			
Indiana	1,750	21	5.83%
Sample	1,370	16	6.18%

Table S2. COVID-19 has made me worry that I may not have a place to live (n=994)

Parameter	Estimate	(se)	
Age	0.09	(0.08)	
Female	0.26	(0.12)	*
Race			
Black	0.33	(0.33)	
Latino	0.21	(0.46)	
Other	0.44	(0.52)	
Education			
Less than High School	1.14	(0.25)	***
High School	1.19	(0.29)	***
Some College	0.59	(0.13)	***
Rural	-0.22	(0.20)	
Prior to COVID-19			
Unemployed	0.33	(0.38)	
Food/Home Insecurity	0.63	(0.22)	**
Intercepts			
Threshold=1	-0.19	(0.11)	
Threshold=2	3.09	(0.20)	***
Threshold=3	4.84	(0.28)	***
χ^2	0.00		***

Notes: Ordinal logistic regression model adjusted by sample weights and standard errors clustered by shared county. Race reference category = white. Education reference category = bachelors. Estimates reported in log odds.

Table S3. COVID-19 has made me worry that I may not have enough money to buy food (n=994)

Parameter	Estimate	(se)	
Age	-0.17	(0.07)	*
Female	0.33	(0.18)	
Race			
Black	1.23	(0.23)	***
Latino	0.02	(0.47)	
Other	0.29	(0.39)	
Education			
Less than High School	1.47	(0.24)	***
High School	1.01	(0.21)	***
Some College	0.76	(0.21)	***
Rural	-0.20	(0.18)	
Prior to COVID-19			
Unemployed	0.24	(0.40)	
Food/Home Insecurity	1.03	(0.25)	***
Intercepts			
Threshold=1	-0.72	(0.17)	***
Threshold=2	2.33	(0.16)	***
Threshold=3	4.07	(0.22)	***
χ^2	0.00		***

Notes: Ordinal logistic regression model adjusted by sample weights and standard errors clustered by shared county. Race reference category = white. Education reference category = bachelors. Estimates reported in log odds.

Table S4. COVID-19 has made me worry about my finances, in general (n=994)

Parameter	Estimate	(se)	
Age	-0.29	(0.08)	***
Female	0.38	(0.17)	*
Race			
Black	0.50	(0.14)	***
Latino	0.64	(0.20)	**
Other	0.49	(0.46)	
Education			
Less than High School	0.53	(0.26)	*
High School	0.39	(0.18)	*
Some College	0.18	(0.14)	
Rural	-0.35	(0.14)	*
Prior to COVID-19			
Unemployed	0.20	(0.37)	
Food/Home Insecurity	0.78	(0.19)	***
Intercepts			
Threshold=1	-1.99	(0.20)	***
Threshold=2	0.50	(0.14)	***
Threshold=3	2.71	(0.16)	***
χ^2	0.00		***

Notes: Ordinal logistic regression model adjusted by sample weights and standard errors clustered by shared county. Race reference category = white. Education reference category = bachelors. Estimates reported in log odds.

Table S5. I have been fired or laid off because of COVID-19 (n=994)

Parameter	Estimate	(se)	
Age	-0.85	(0.22)	***
Female	0.59	(0.34)	
Race			
Black	0.61	(0.27)	*
Latino	-0.05	(0.38)	
Other	-2.20	(1.18)	
Education			
Less than High School	1.06	(0.45)	*
High School	0.23	(0.35)	
Some College	0.96	(0.37)	**
Rural	-0.47	(0.41)	
Prior to COVID-19			
Unemployed	1.47	(0.35)	***
Food/Home Insecurity	-0.21	(0.27)	
Constant	-3.67	(0.38)	***
χ^2	0.00		***

Notes: Logistic regression model adjusted by sample weights and standard errors clustered by shared county. Race reference category = white. Education reference category = bachelors. Estimates reported in log odds.