

# Selection of reference genes for gene expression analysis in *Liriodendron hybrids*' somatic embryogenesis and germinative tissues

Tingting Li<sup>1\*</sup>, Weigao Yuan<sup>1</sup>, Shuai Qiu<sup>2,3</sup>, Jisen Shi<sup>2</sup>

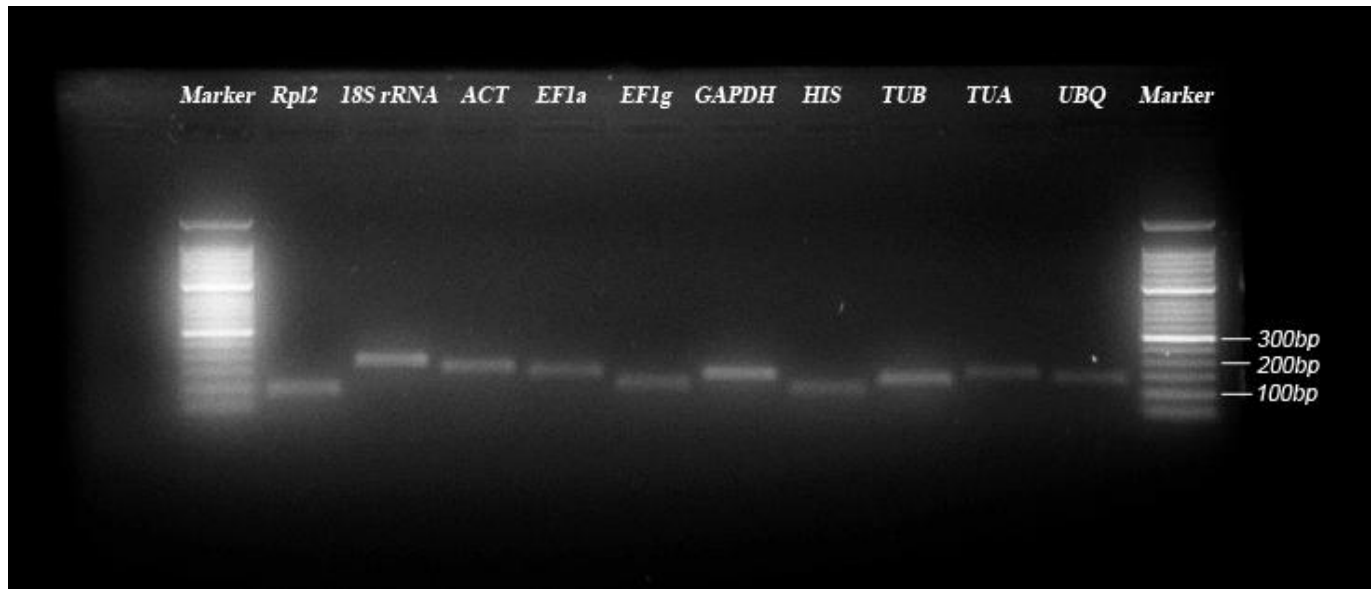
<sup>1</sup>Zhejiang Academy of Forestry, Zhejiang 310019, China

<sup>2</sup>Key Laboratory of Forest Genetics and Biotechnology, Ministry of Education of China, Co-Innovation Center for the Sustainable Forestry in Southern China, Nanjing Forestry University, Nanjing 210037, China

<sup>3</sup>Hangzhou Landscaping Incorporated, Hangzhou 310020, China

\*Corresponding author: Tingting Li: [tingtingli71@163.com](mailto:tingtingli71@163.com)

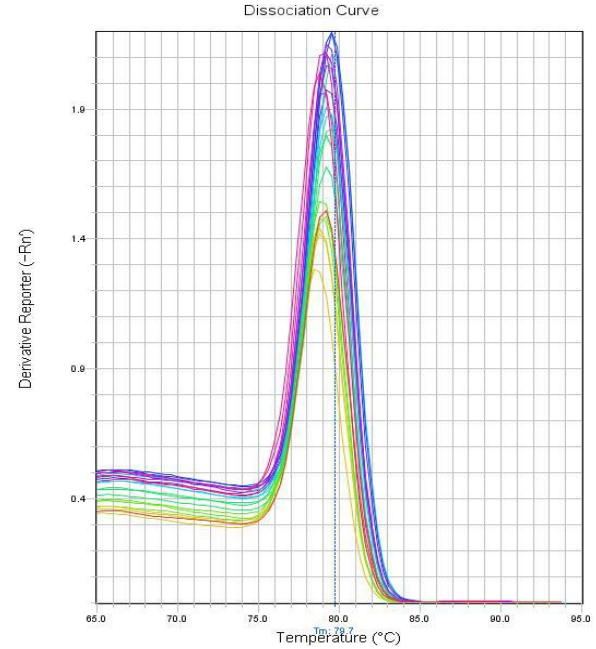
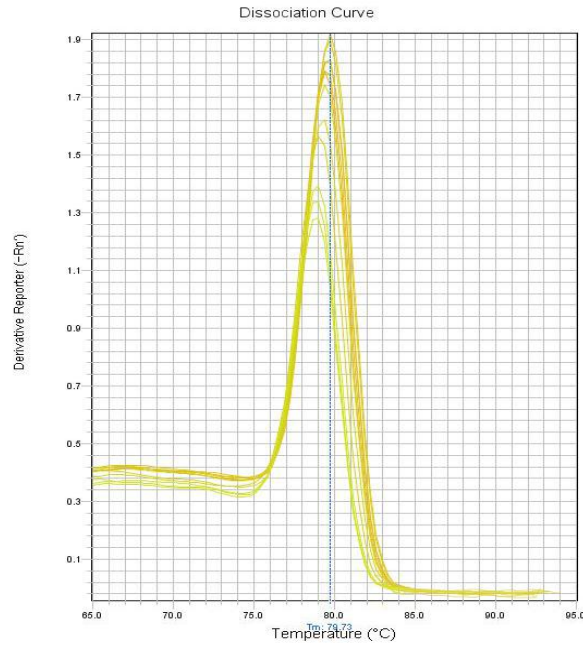
## Supplemental data 1. Agarose gel electrophoresis and melting curve of reference genes.



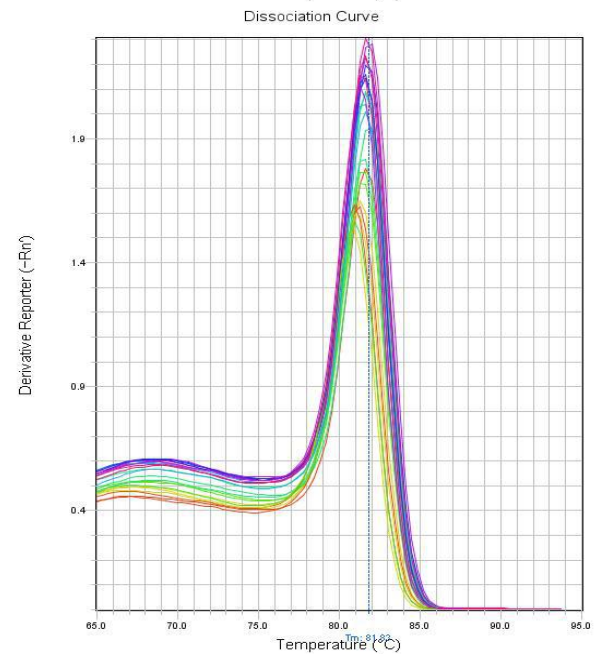
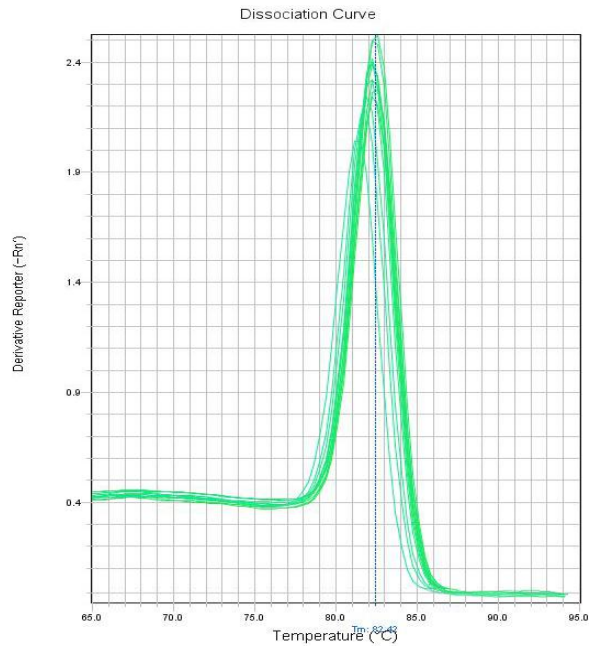
# Gradient dilute mixed samples

# Total development stages

Rpl2



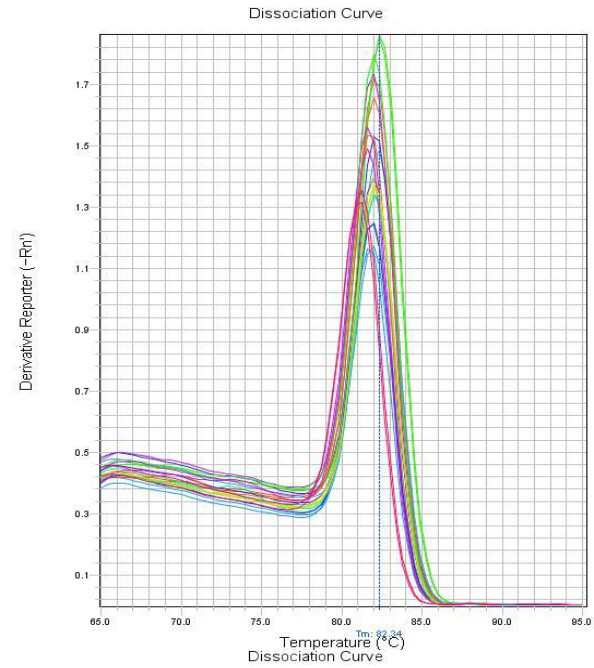
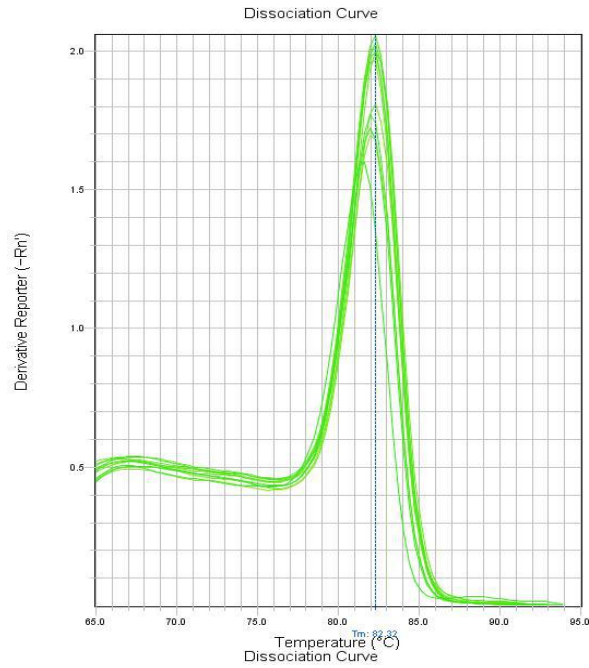
18S rRNA



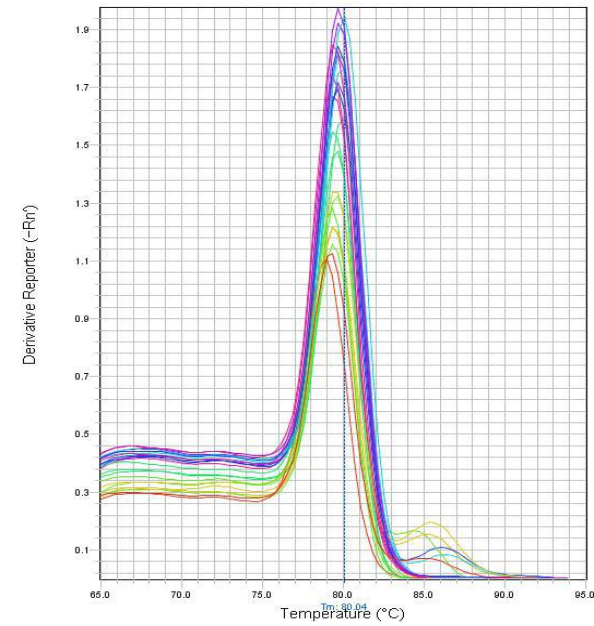
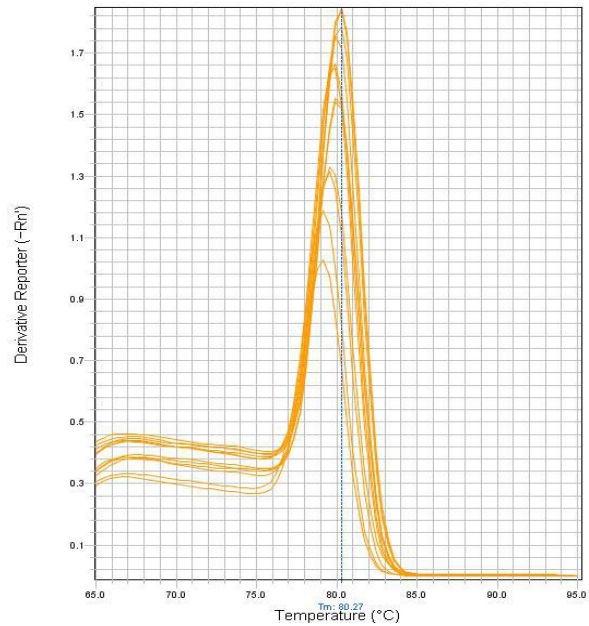
# Gradient dilute mixed samples

# Total development stages

ACT



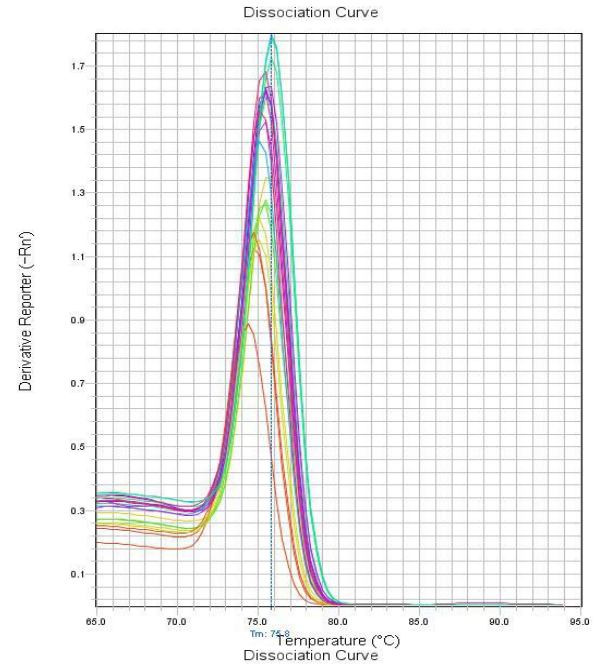
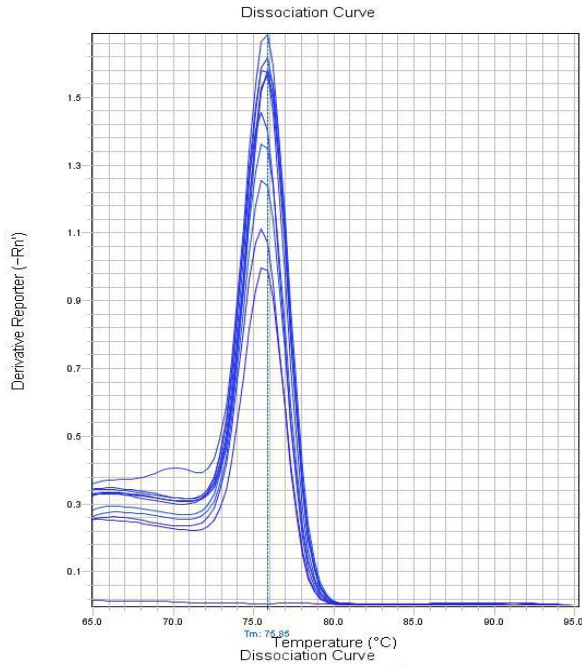
EF1a



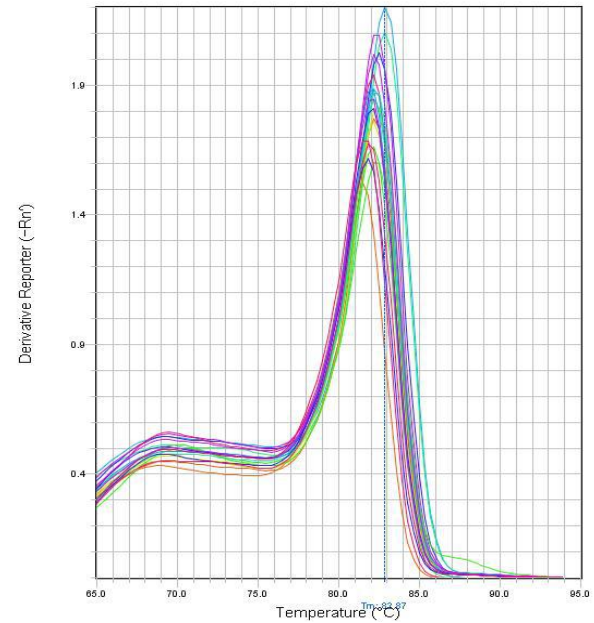
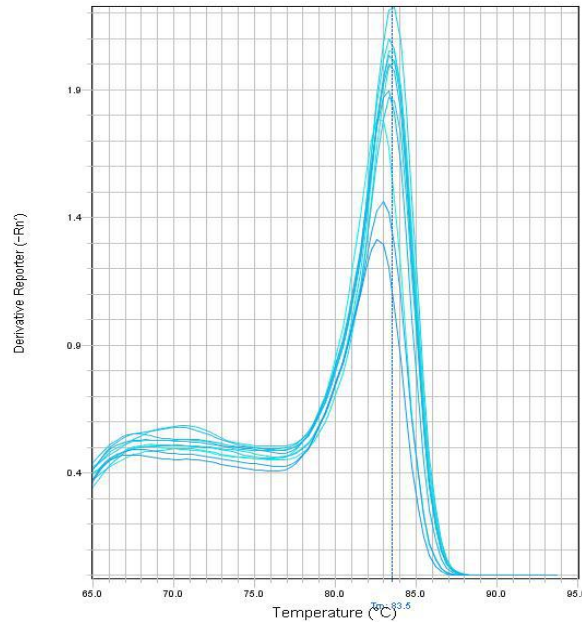
# Gradient dilute mixed samples

# Total development stages

EF1g



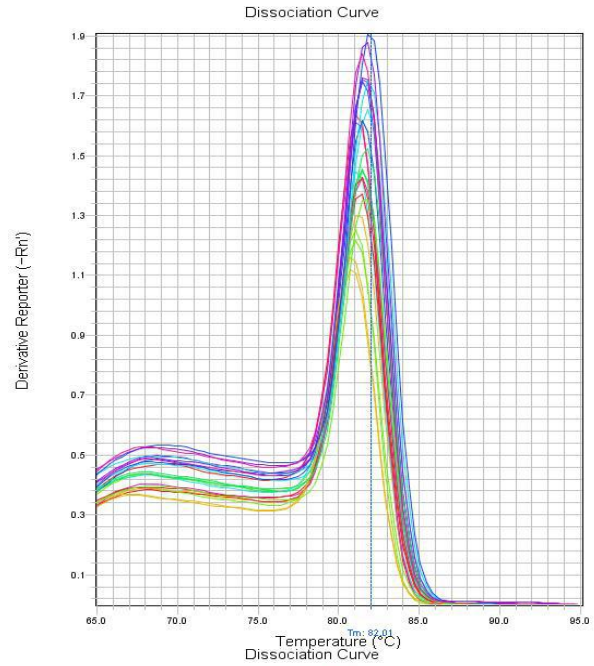
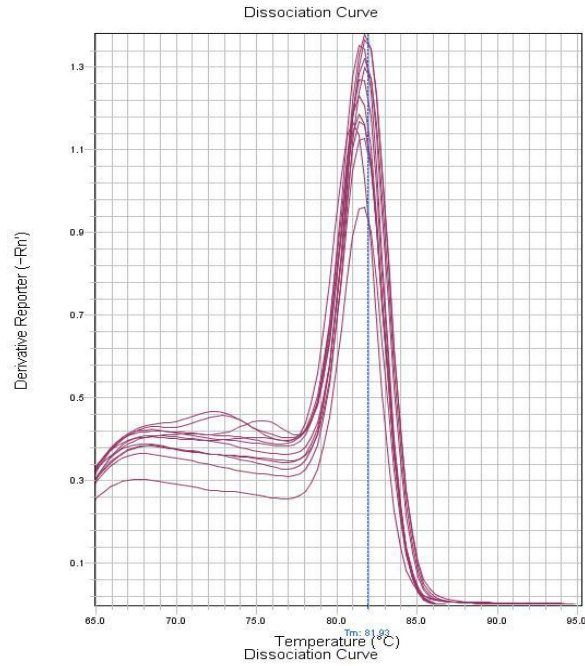
GAPDH



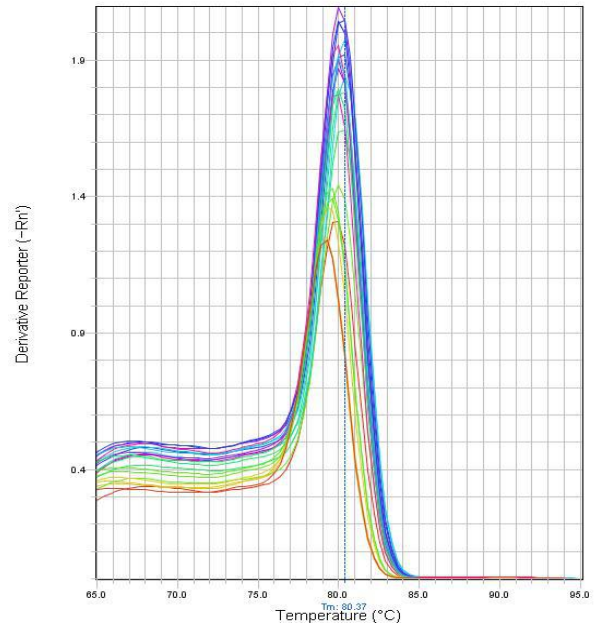
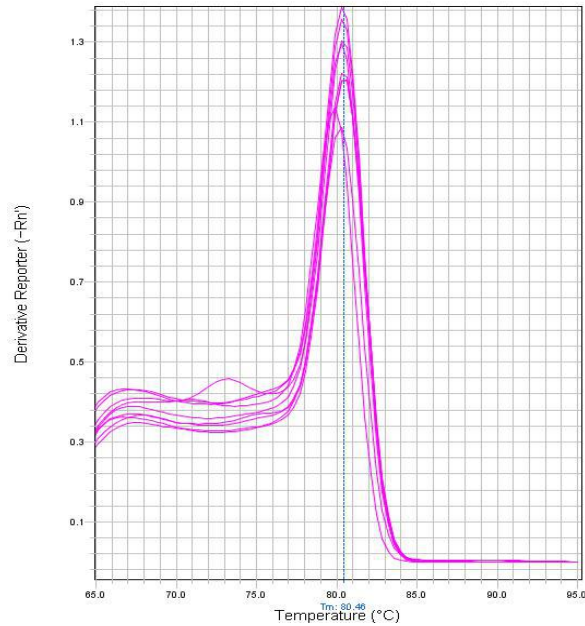
# Gradient dilute mixed samples

# Total development stages

HIS



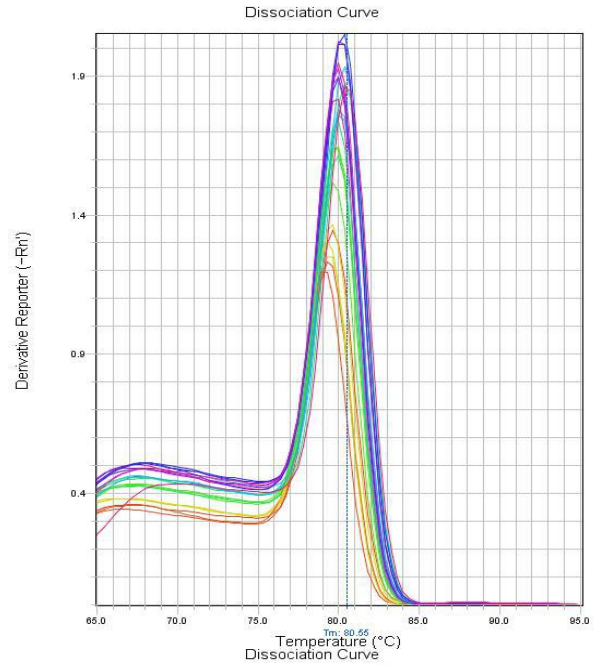
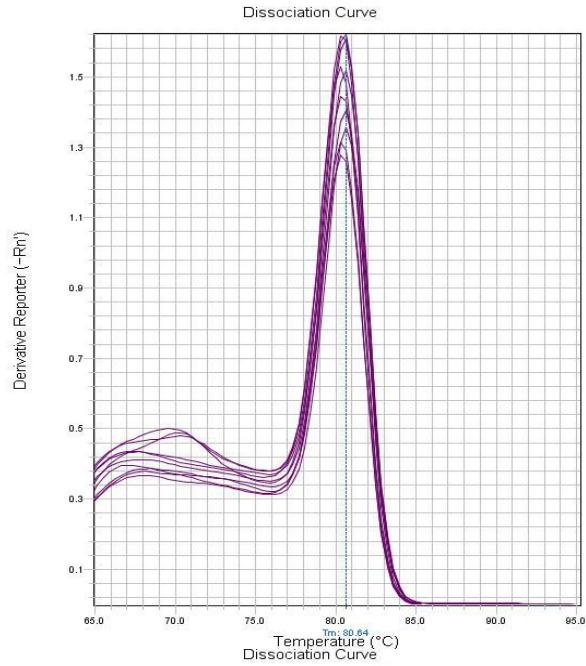
TUA



# Gradient dilute mixed samples

# Total development stages

TUB



UBQ

