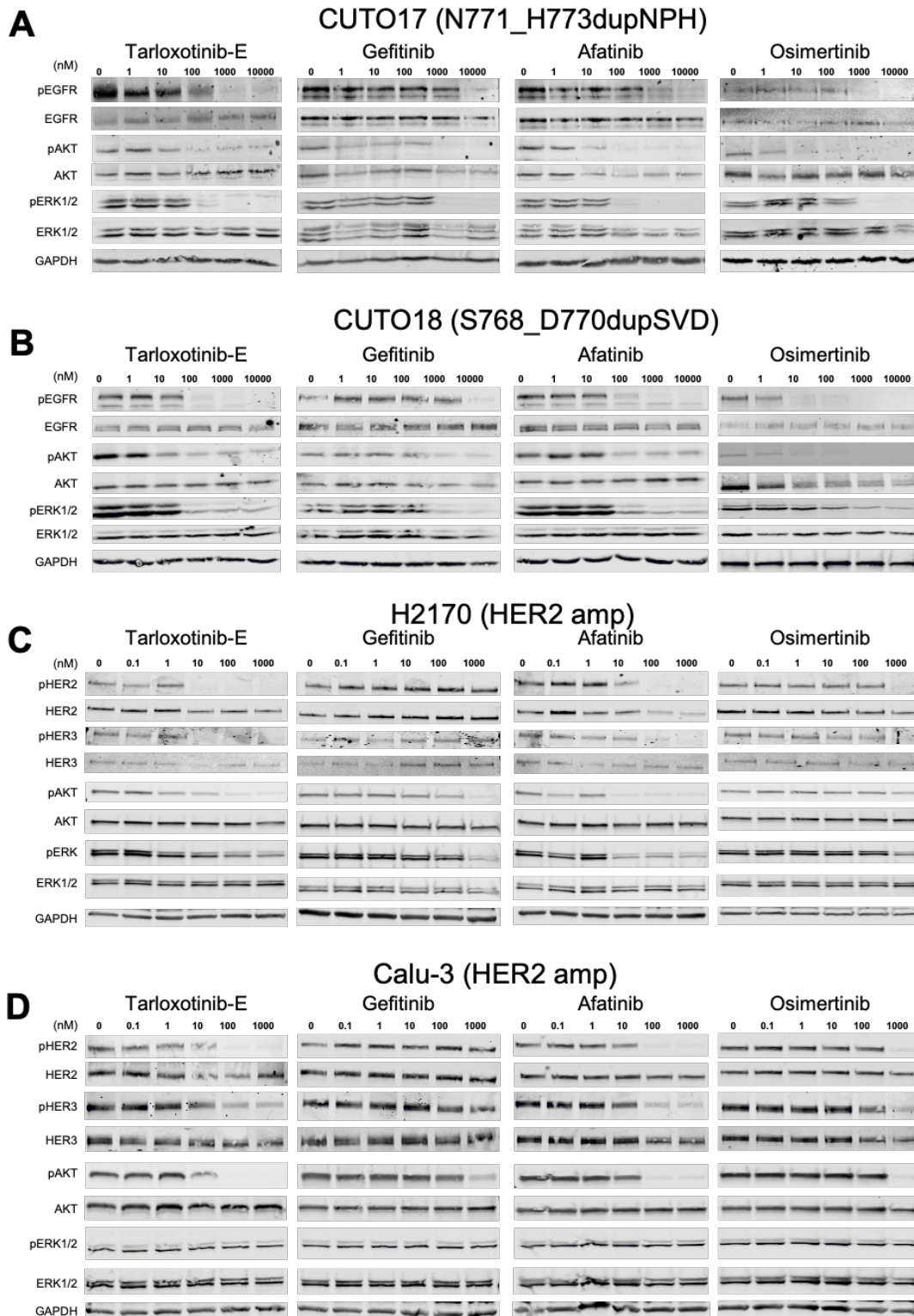


# Supplementary Figure S3



**Supplementary Figure S3. Tarloxotinib-E inhibits ErbB family members phosphorylation and downstream signaling in EGFR, HER2 and NRG1 driven cell lines.** Cells were treated with the indicated doses of afatinib, gefitinib, osimertinib or tarloxotinib-E (active drug) for 2 hours, lysed and analyzed by immunoblot for the indicated proteins. EGFR exon 20 insertion mutation cell lines: **A)** CUTO17 and **B)** CUTO18; HER2 amplification, **C)** H2170 and **D)** Calu-3; Experiments were done in triplicate.