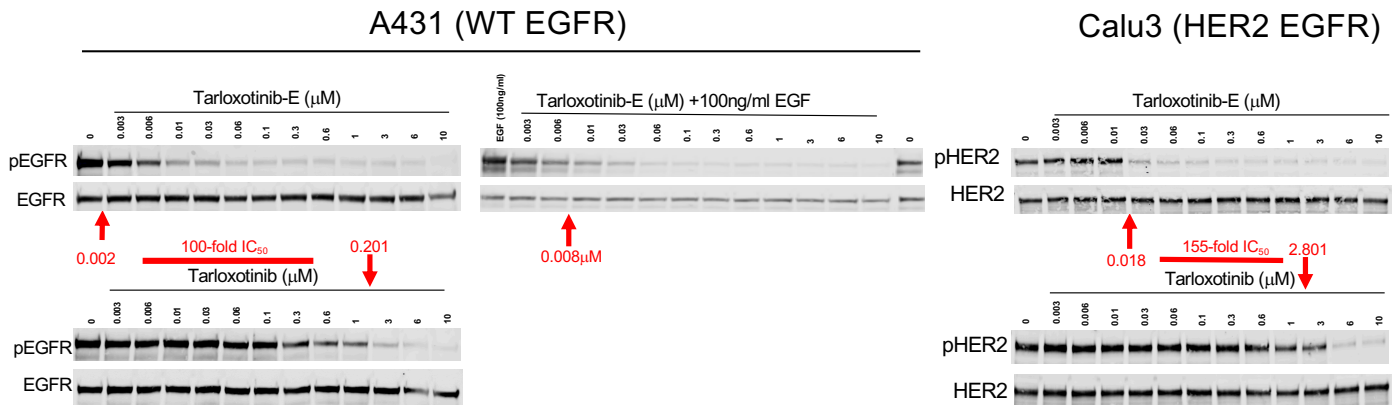
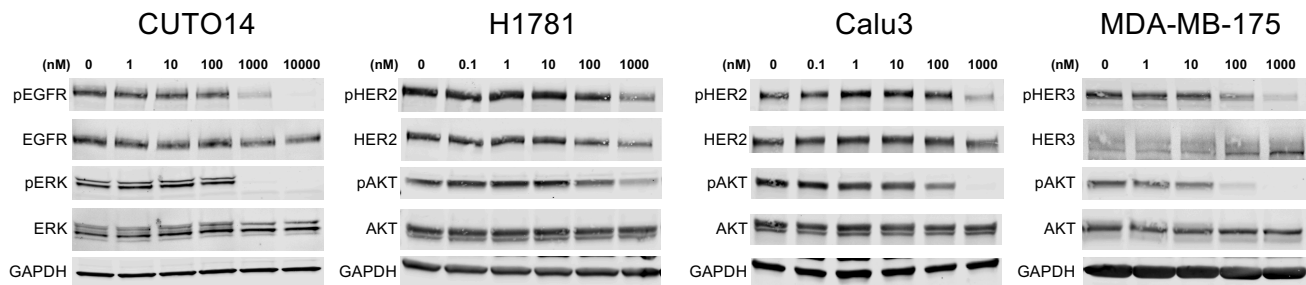


# Supplementary Figure S4

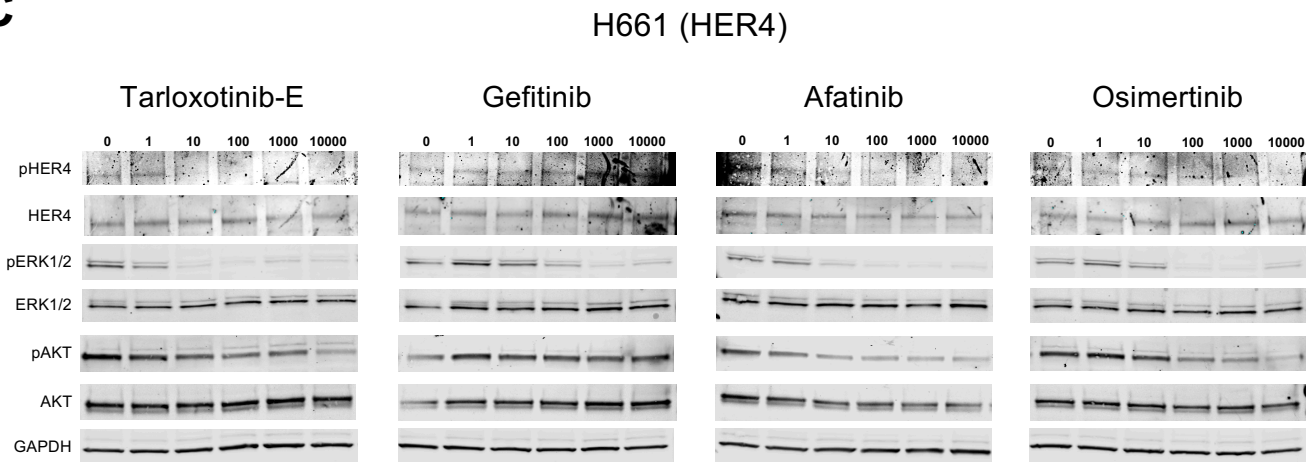
**A**



**B**



**C**



**Supplementary Figure S4. Tarloxotinib (prodrug) is less effective against WT and mutant forms of EGFR and HER2.** Cell lines were treated with the indicated tyrosine kinase inhibitors for 2 hours lysed and analyzed by immunoblot for the indicated proteins. **A)** Effect of the pro-drug and tarloxotinib-E in WT EGFR and WT HER2 phosphorylation. EGF was added in the last 15 minutes of the 2-hour of tarloxotinib-E treatment. **B)** Tarloxotinib requires higher concentrations for target suppression in the cell lines evaluated. **C)** Immunoblots of H661 cells, which express high levels of HER4. Experiments were done in triplicate.