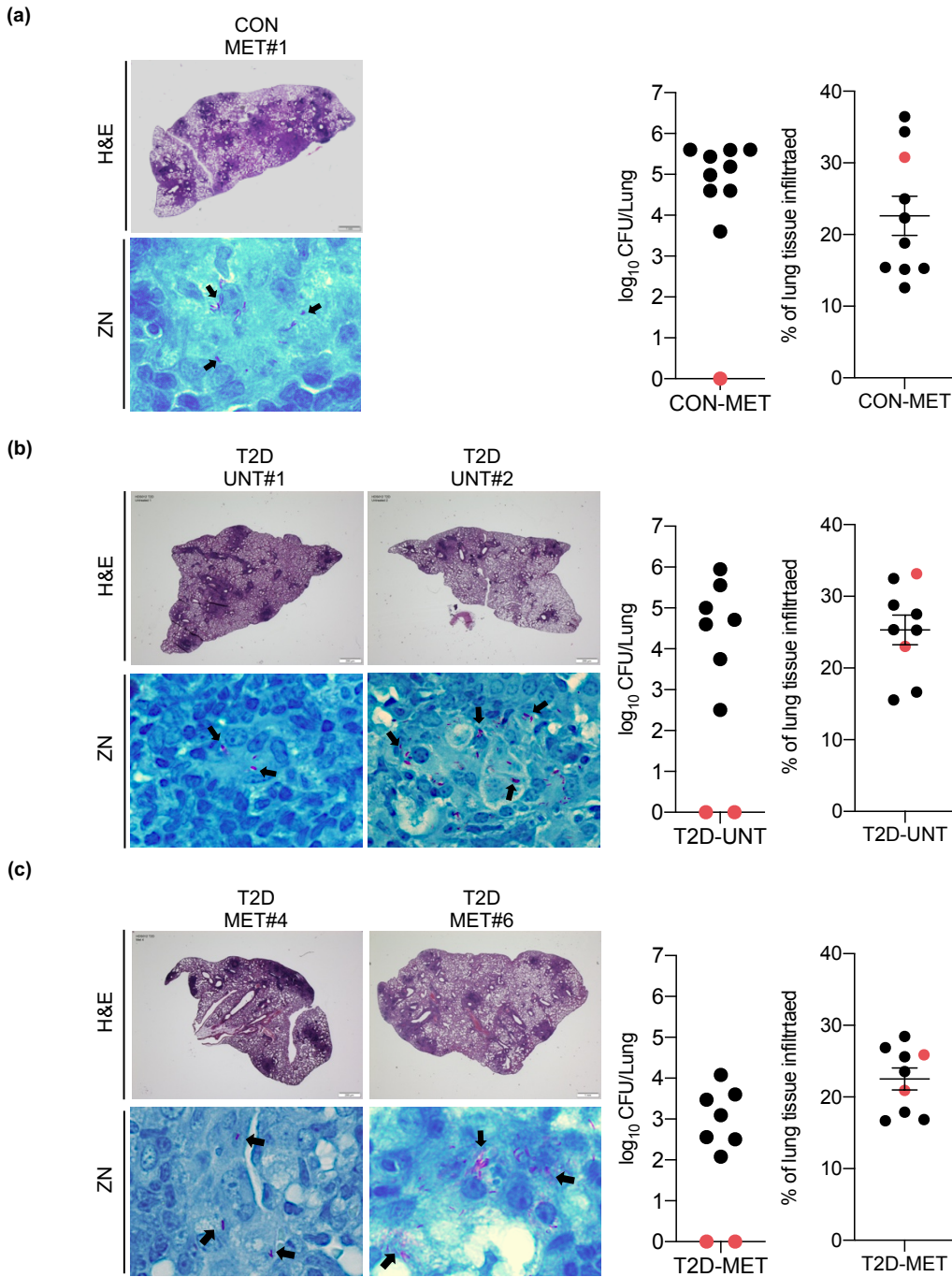
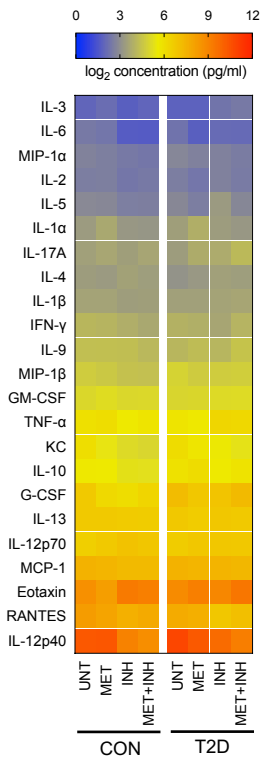
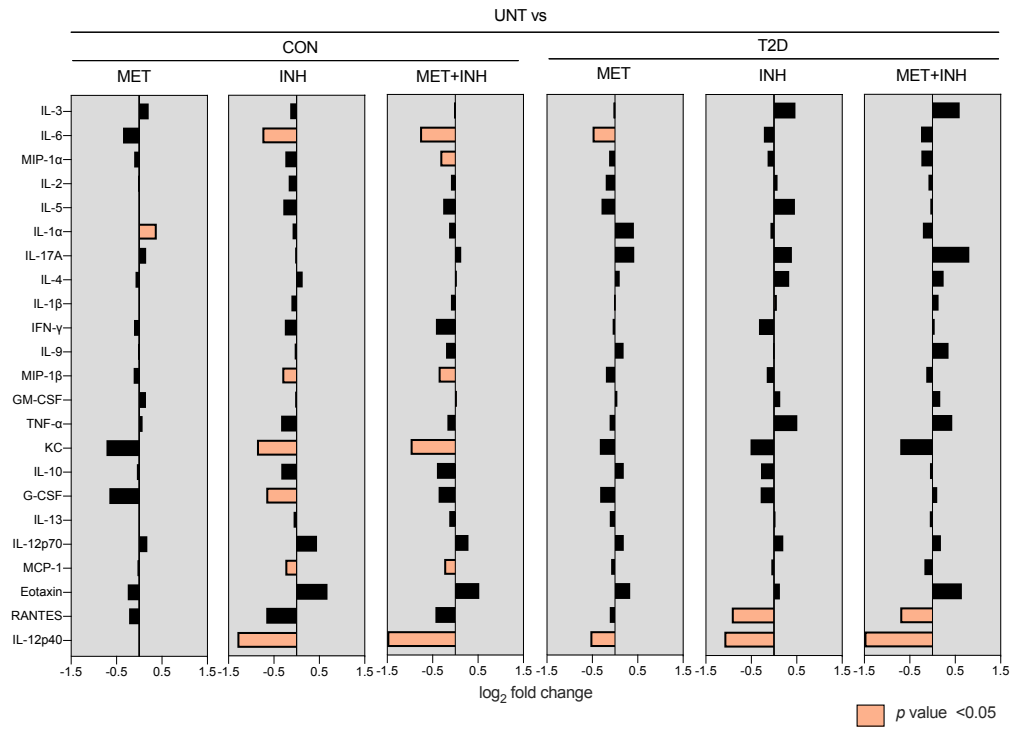


**Fig S1: Lung immunopathology.** Sub gross H&E stained lung tissue images (10x) from each mouse. Mice that have been excluded are highlighted in red (refer to **Figure S2**). Abbreviations: CON; control, T2D; type 2 diabetes, UNT; untreated, MET; metformin, INH; Isoniazid, MET+INH; combined therapy, H&E; Hematoxylin and eosin.



**Fig S2: Excluded samples.** Total of 5 mice were excluded from (a) CON MET, (b) T2D UNT and (c) T2D MET groups due to the absence of detectable viable bacteria in lung tissue homogenates despite the increased tissue inflammation (H&E staining) and presence of acid-fast bacilli (ZN staining). Scatter plots represent the lung CFU levels and % of lung tissue inflammation within the group of excluded mice (solid red circles) (a-c) at 45 days p.i. Abbreviations: CON; control, T2D; type 2 diabetes, CFU; colony forming units, UNT; untreated, MET; metformin, INH; Isoniazid, p.i.; post infection, H&E; Hematoxylin and eosin, ZN; Ziehl-Neelsen.

**(a)****(b)**

**Fig S3: Systemic cytokine/ chemokine profiles.** (a) Serum cytokine/ chemokine levels were measured 45 days p.i. and (b) compared against UNT mice. Results are presented as (a) a heat map ( $\log_2$  concentration) and (b) a horizontal bar graph ( $\log_2$  fold difference of each analyte compared to UNT) from 7-10 mice per group from two independent pooled experiments. Orange bars indicate  $p$  values < 0.05. Abbreviations: CON; control, T2D; type 2 diabetes, CFU; colony forming units, UNT; untreated, MET; metformin, INH; Isoniazid, MET+INH; combined therapy, p.i.; post infection.