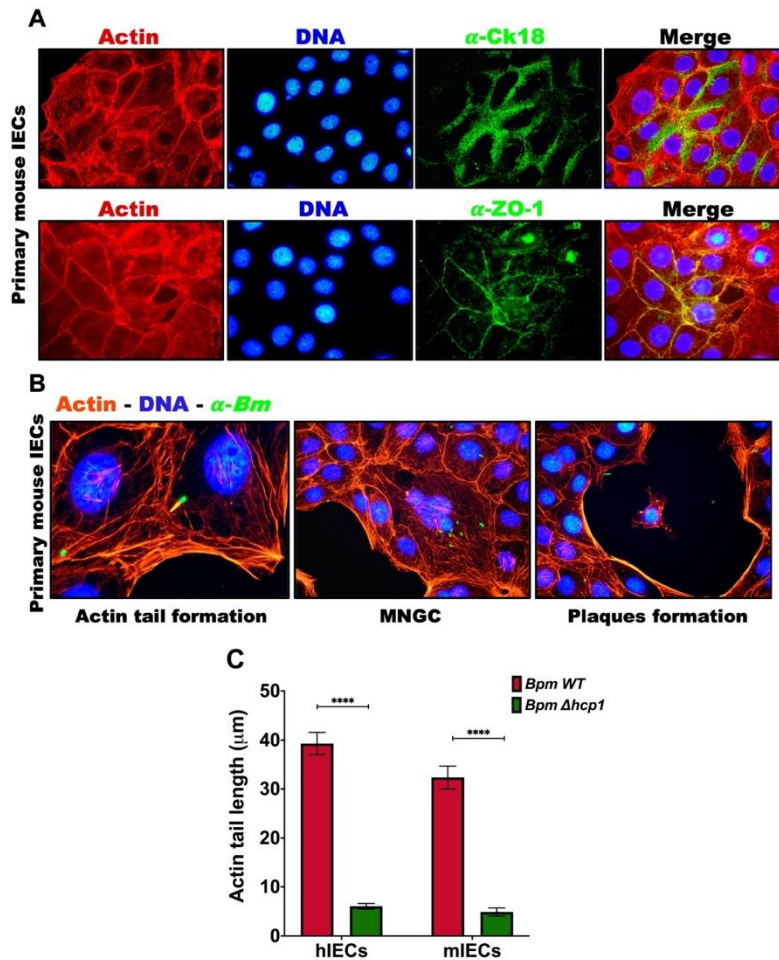
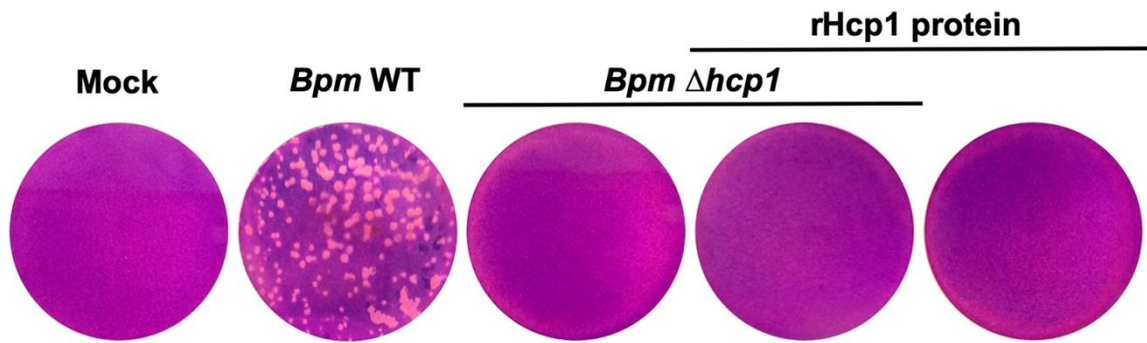


Supplemental Figure 1. Adherence of type 1 fimbrial transposon mutants on Caco-2. (A) Adherent *Bpm* 1026b transposon mutant strains were visualized by Giemsa-staining after 2 h of infection using a MOI of 10. (B) Percent of adhered bacteria to Caco-2 was measured and calculated from input inoculum. Error bars represent the average +/- standard error of the mean of at least three experiments with three biological replicates. Statistical analysis was done using a one-way ANOVA followed by a Tukey's *post-hoc* test. P value <0.01 (**).



Supplemental Figure 2. Phenotypic expression of cytokeratin-18 and ZO-1, hallmarks of *Bm* infection in mouse primary intestinal epithelial cells, and actin tail length differences from *Bpm*-infected IECs. (A) IECs were cultivated and validated for the expression of cytokeratin-18 and ZO-1 by immunofluorescence or (B) infected for 24 h with *Bm* ATCC 23344. Confluent cell monolayers were fixed, permeabilized, and stained using monoclonal antibodies against cytokeratin-18 or ZO-1, followed by a Alexa Fluor 488-conjugated goat anti-mouse IgG antibody. (B) For the detection of bacteria, cells were stained as described in Figure 2. Cells were probed for actin and DNA using rhodamine phalloidin and DAPI, respectively. Microscopic images were taken (60 \times) and processed using ImageJ software. (C) Actin tail length measurements were done analyzing at least 200 actin tails in representative images, from 24 h post infection, using the Olympus cellSens Imaging Software V2.3. Statistical differences were calculated by a one-way ANOVA followed by Tukey's post hoc test. P value <0.0001 (****).



Supplemental Figure 3. Exogenous addition of recombinant Hcp1 protein does not restore plaque formation. Caco-2 cells were infected with *Bpm* WT, *Bpm* Δ *hcp1* in the presence or absence of recombinant Hcp1 protein (100 μ g/mL). After 24 h of infection, cells were washed, fixed, and stained with Giemsa for 30 min. Images were processed using Image J software. Uninfected (mock) monolayer serve as control.