

M, Marker

1, 20 viruliferous females

2, 20 viruliferous males

3, 20 non-viruliferous females

4, 20 non-viruliferous males

5, WSMoV-infected watermelon leaf

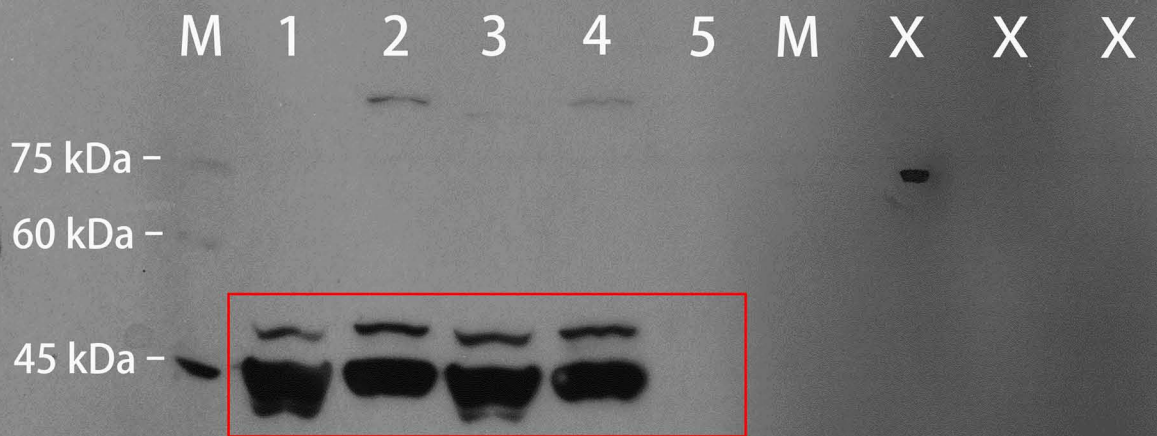


figure panel was
generated from

M, Marker

1, 20 viruliferous females

2, 20 viruliferous males

3, 20 non-viruliferous females

4, 20 non-viruliferous males

5, WSMoV-infected watermelon leaf