

Clinical significance of Annexin A2 expression in oral squamous cell carcinoma and its influence on cell proliferation, migration and invasion

Yingyi Ma¹, Haiye Wang²

¹Department of Periodontal, The First Affiliated Hospital of Zhengzhou University, Henan Provincial Stomatology Hospital, Zhengzhou 450052, Henan Province, China.

²Special department, The First Affiliated Hospital of Zhengzhou University, Henan Provincial Stomatology Hospital, Zhengzhou 450052, Henan Province, China.

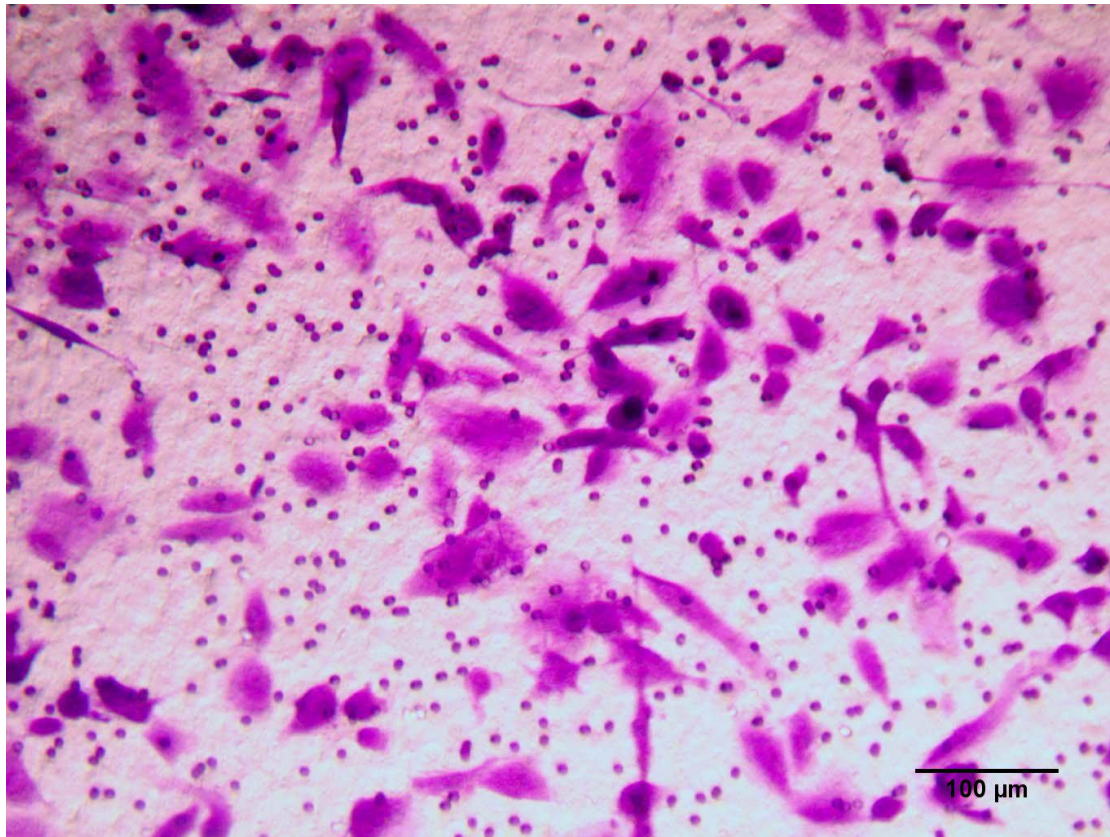
Corresponding to: Haiye Wang

E-mail: wh_zyfck@163.com

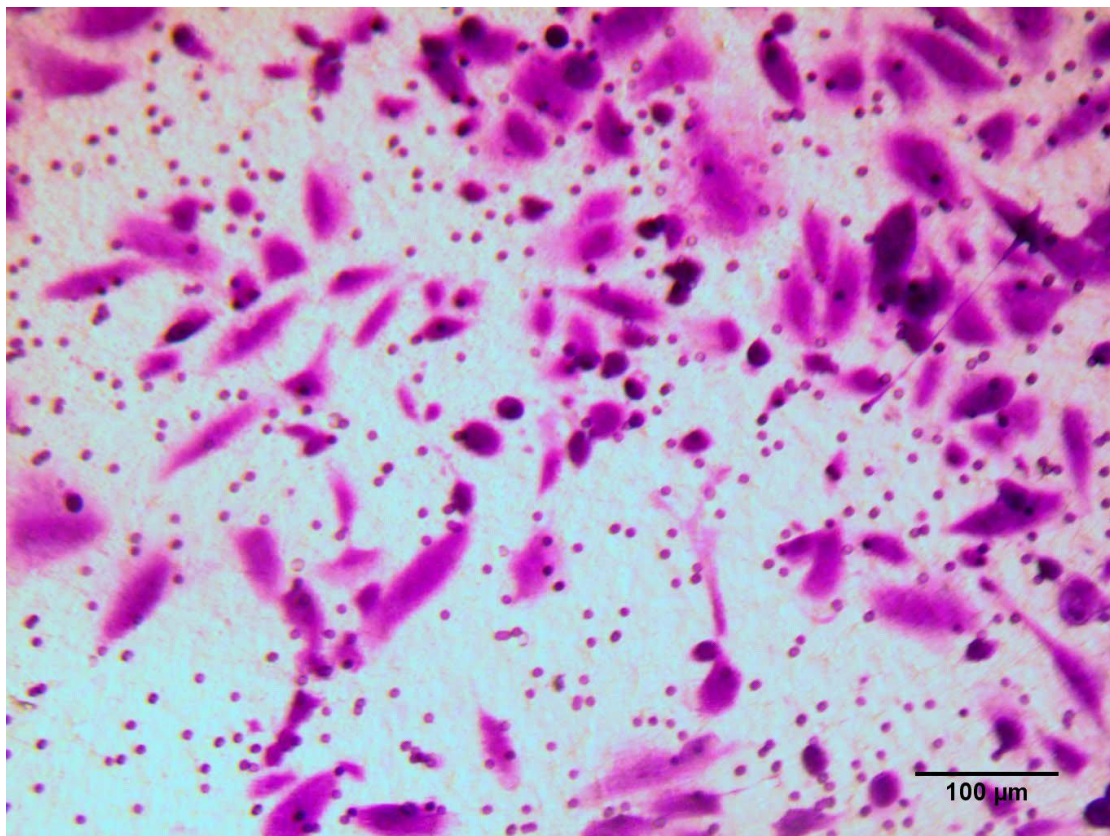
Address: Special department, The First Affiliated Hospital of Zhengzhou University, Henan Provincial Stomatology Hospital, No.1 Jianshe East Road, Zhengzhou 450052, Henan Province, China.

Tel: +8615838126816.

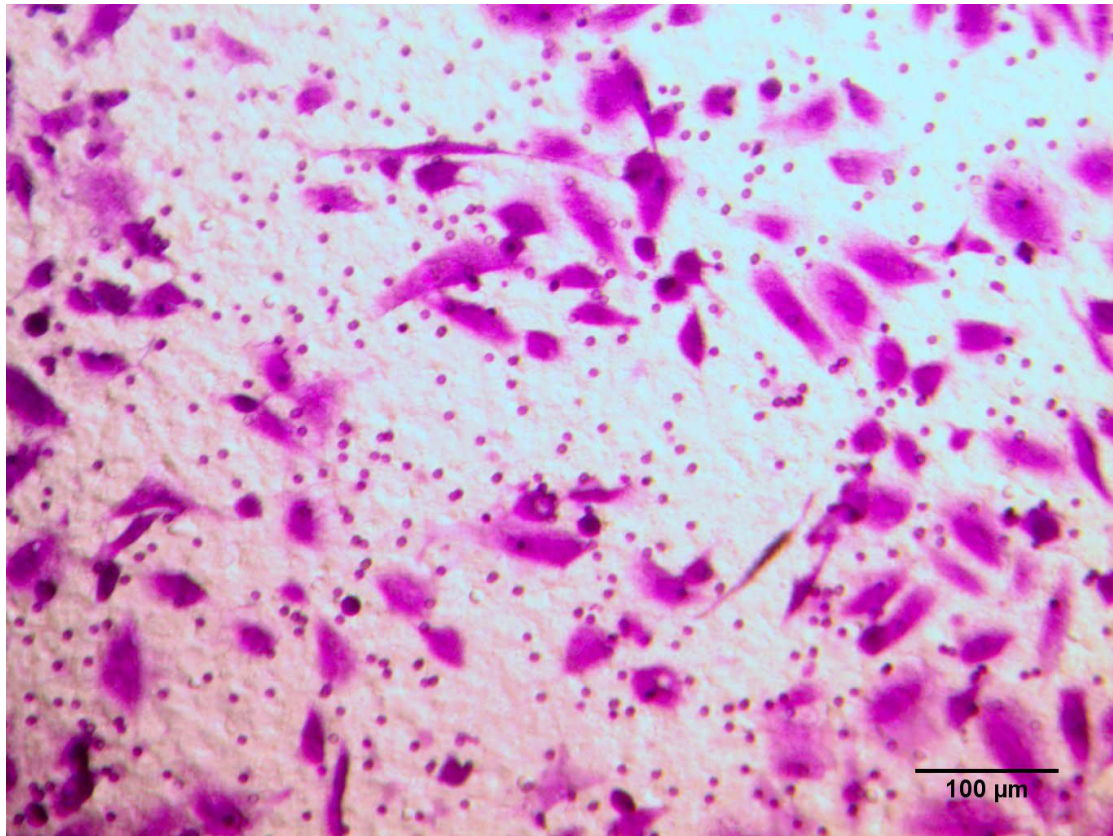
Transwell-HSC-3-Blank(1)



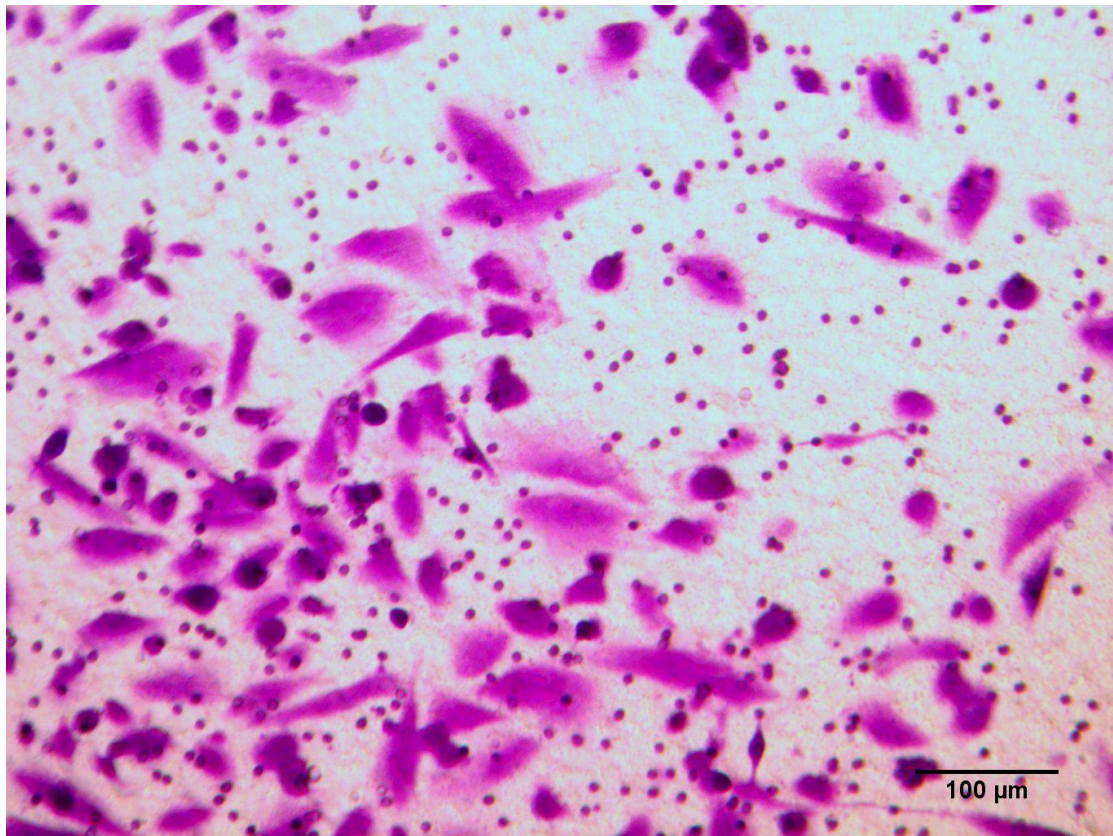
Transwell-HSC-3-Blank(2)



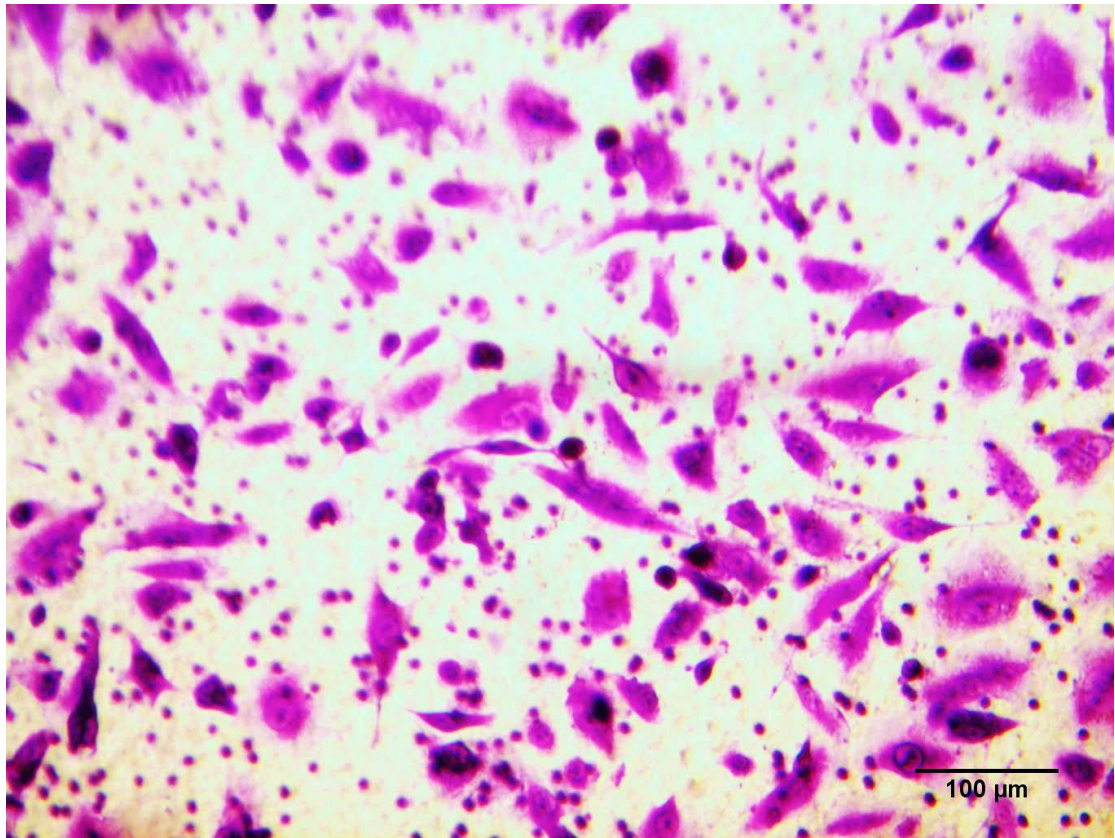
Transwell-HSC-3-Blank(3)



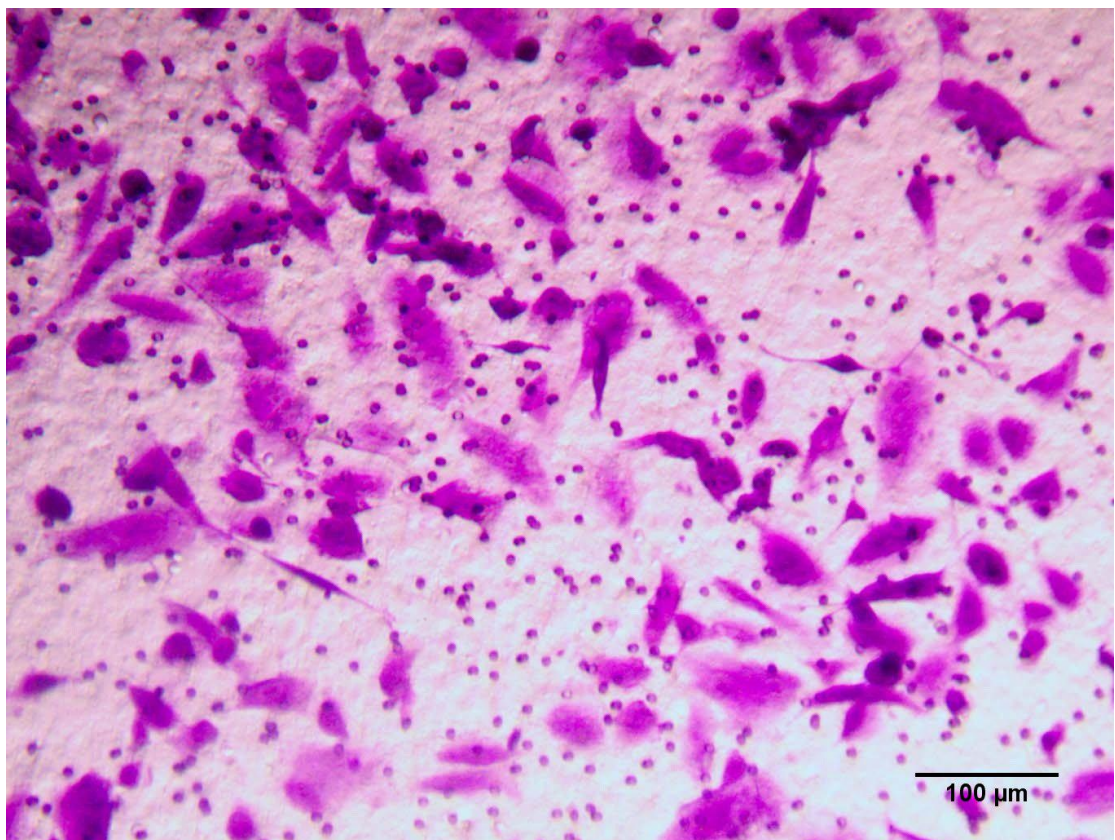
Transwell-HSC-3-Blank(4)



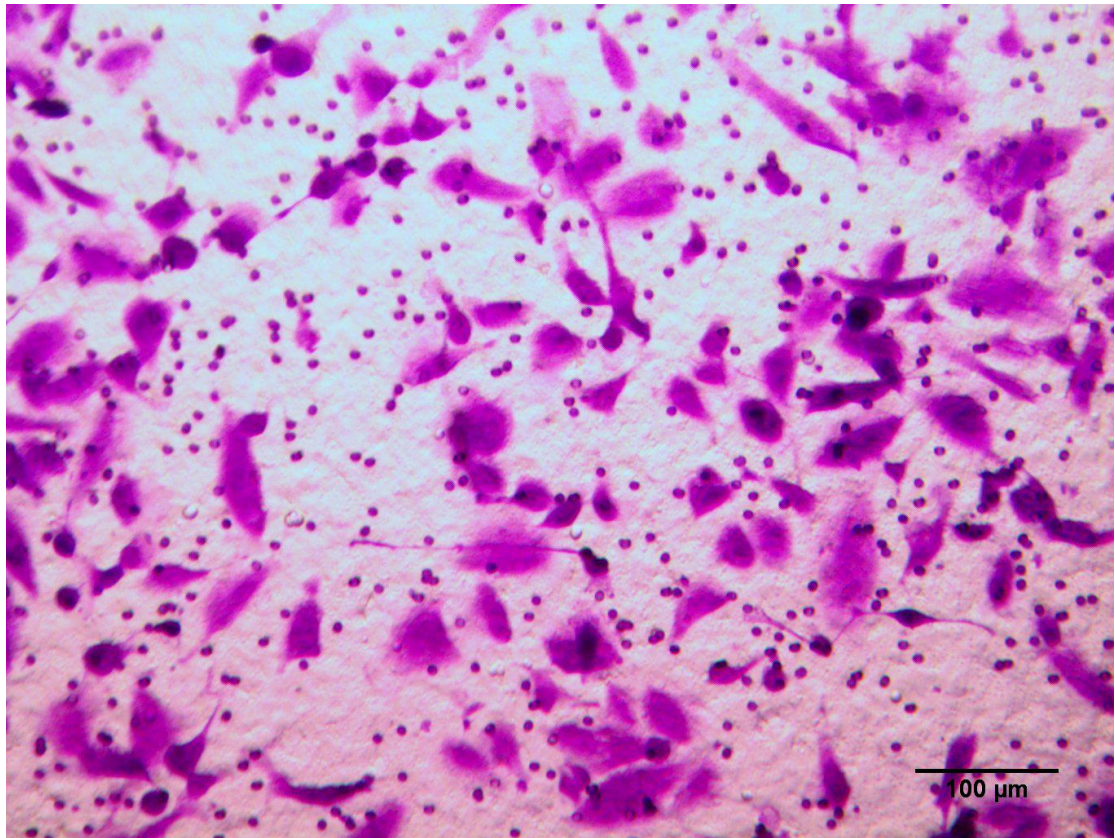
Transwell-HSC-3-Blank(5)



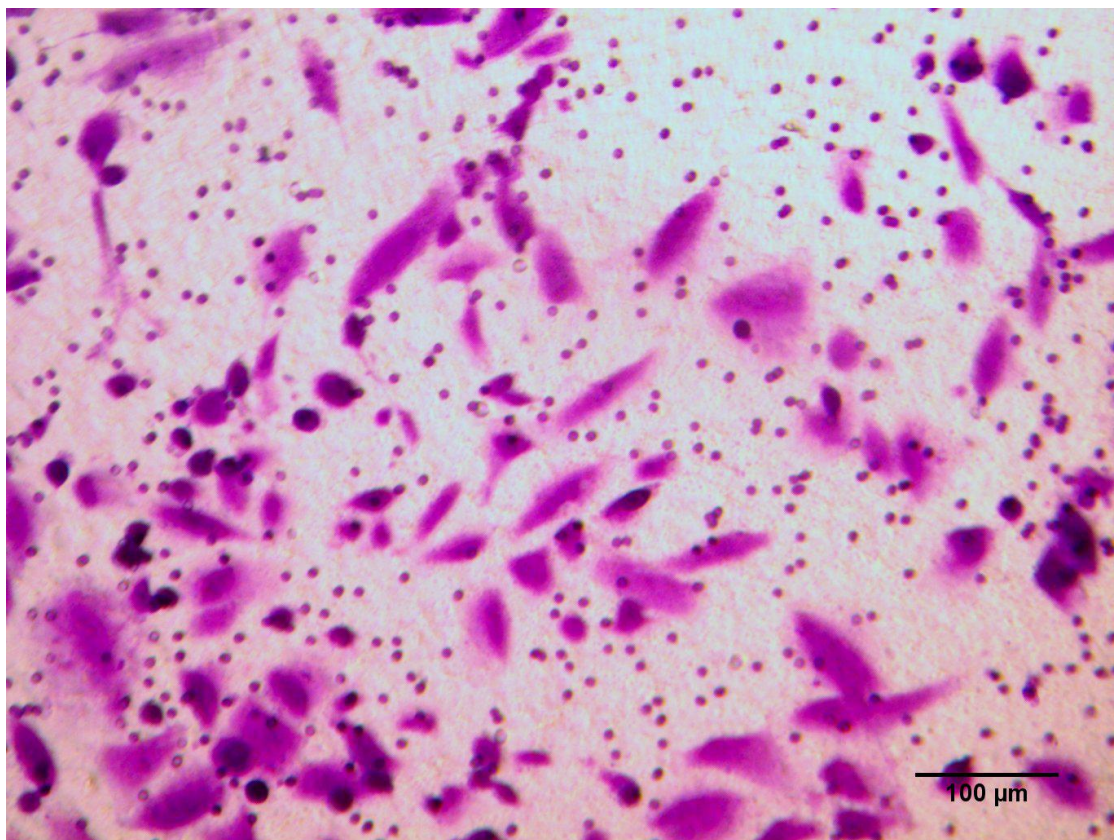
Transwell-HSC-3-NC(1)



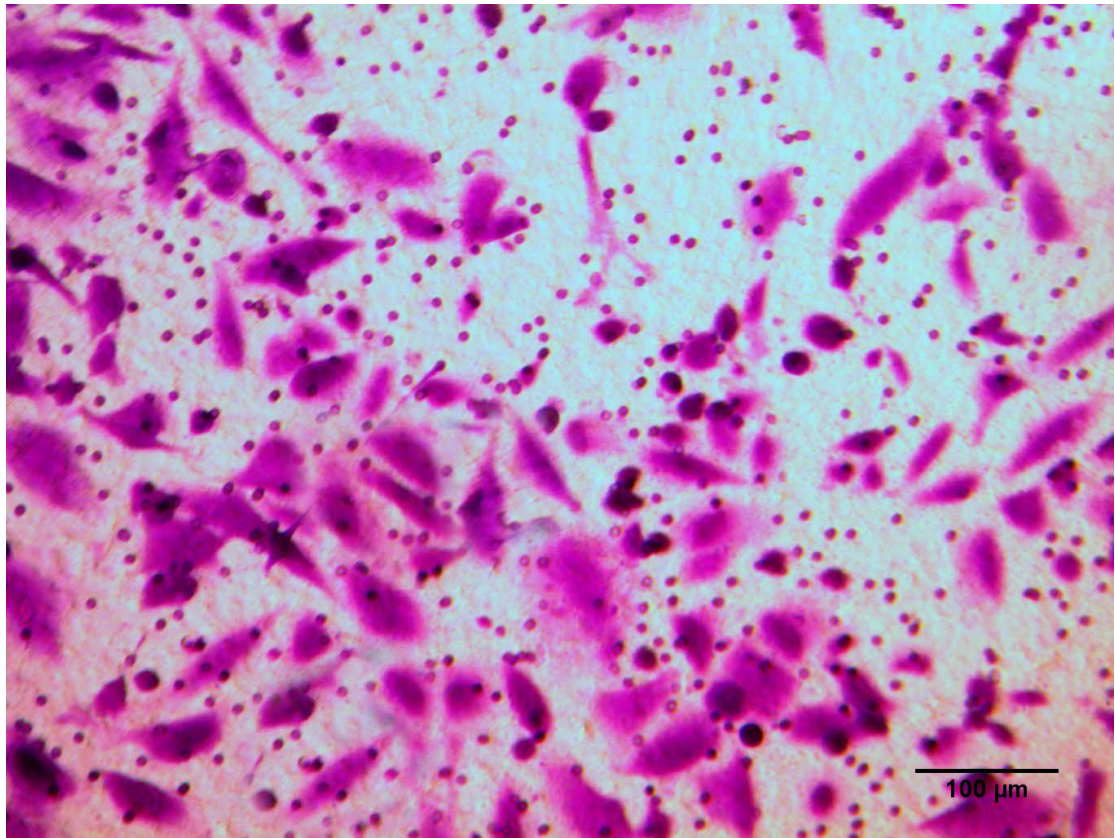
Transwell-HSC-3-NC(2)



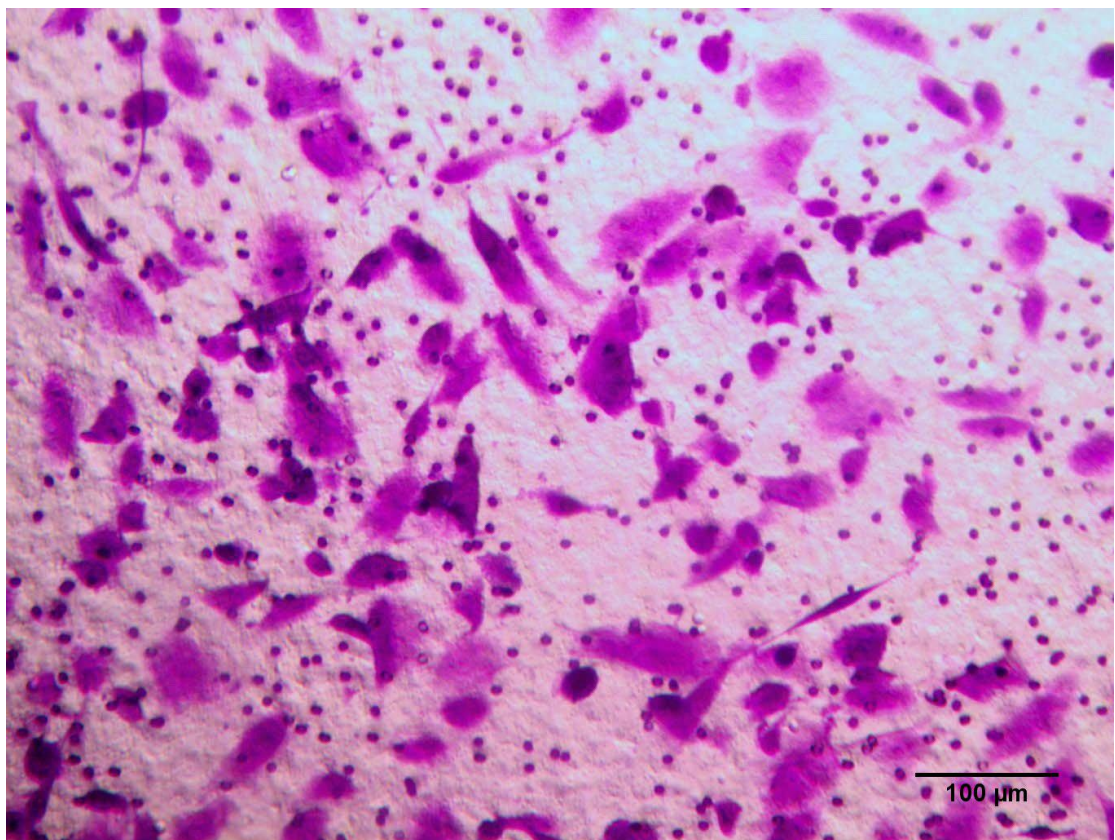
Transwell-HSC-3-NC(3)



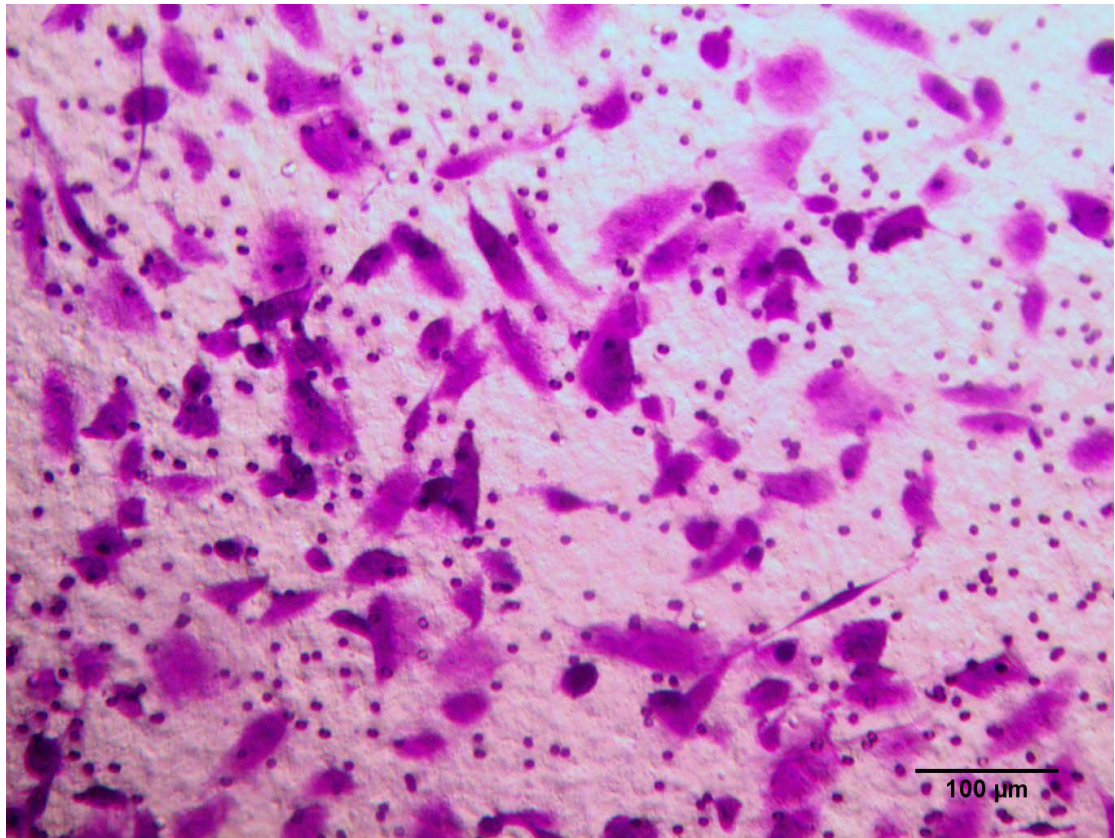
Transwell-HSC-3-NC(4)



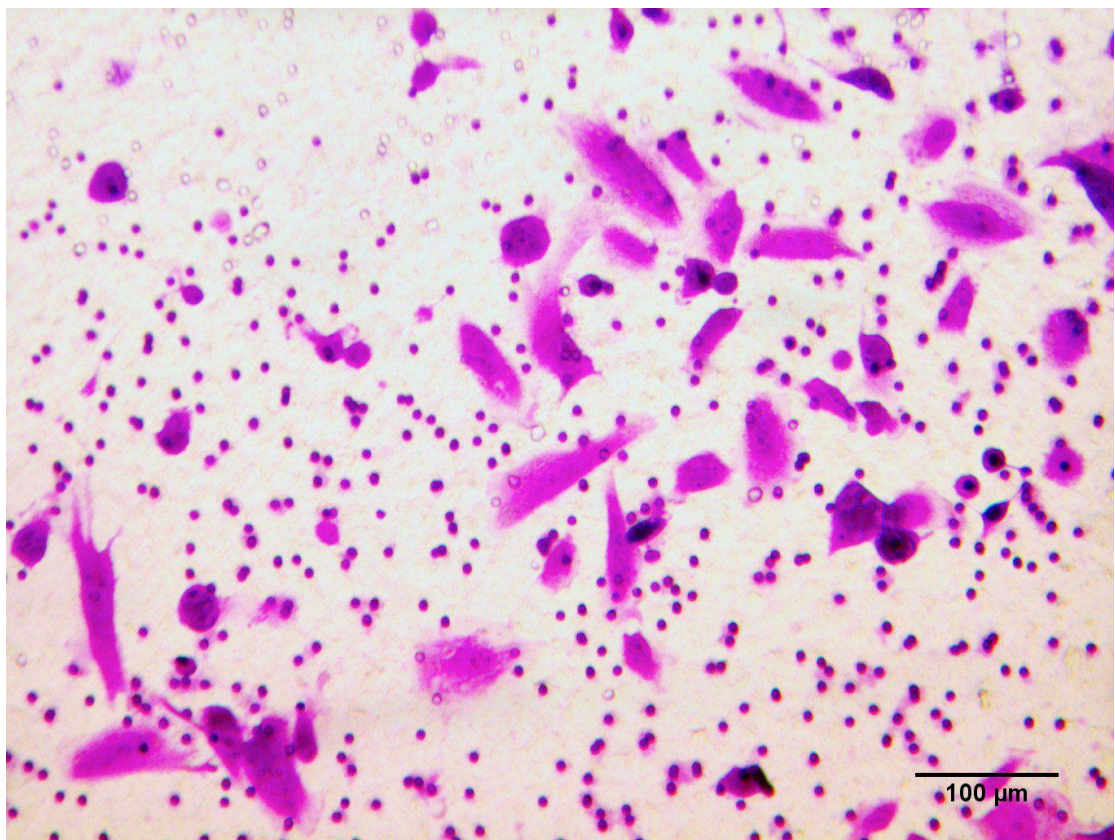
Transwell-HSC-3-NC(5)



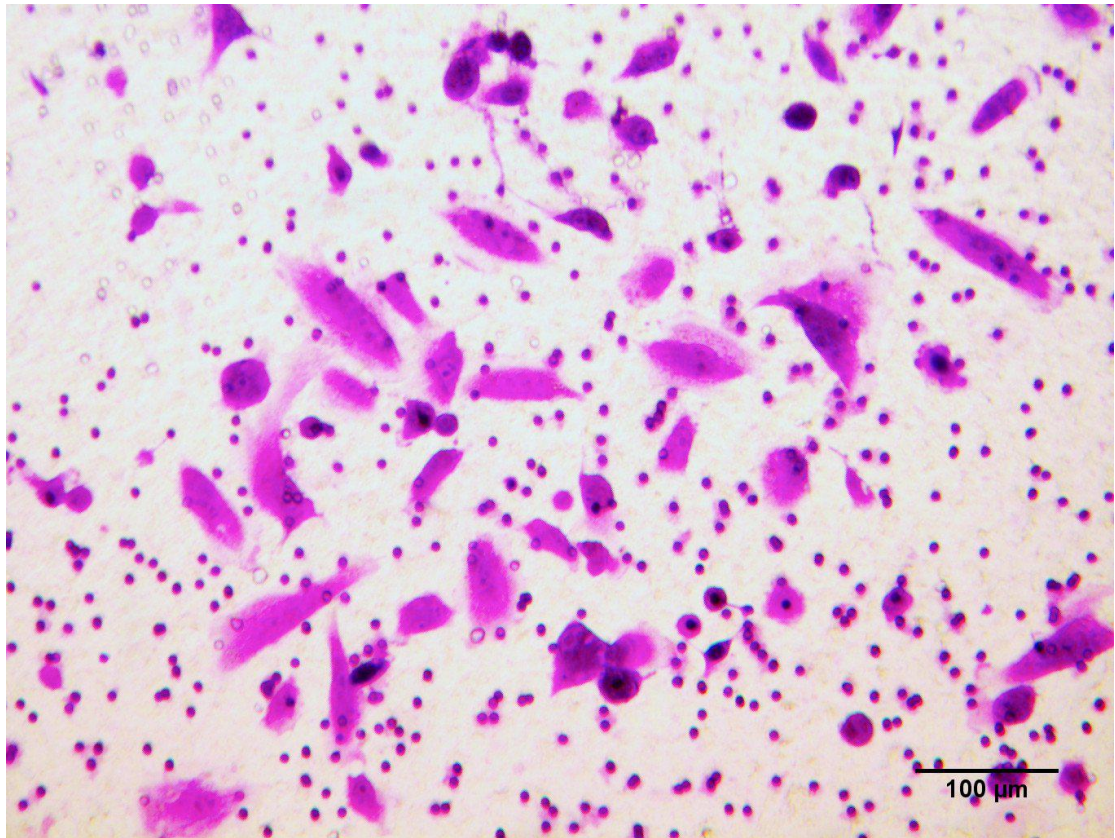
Transwell-HSC-3-siRNA(1)



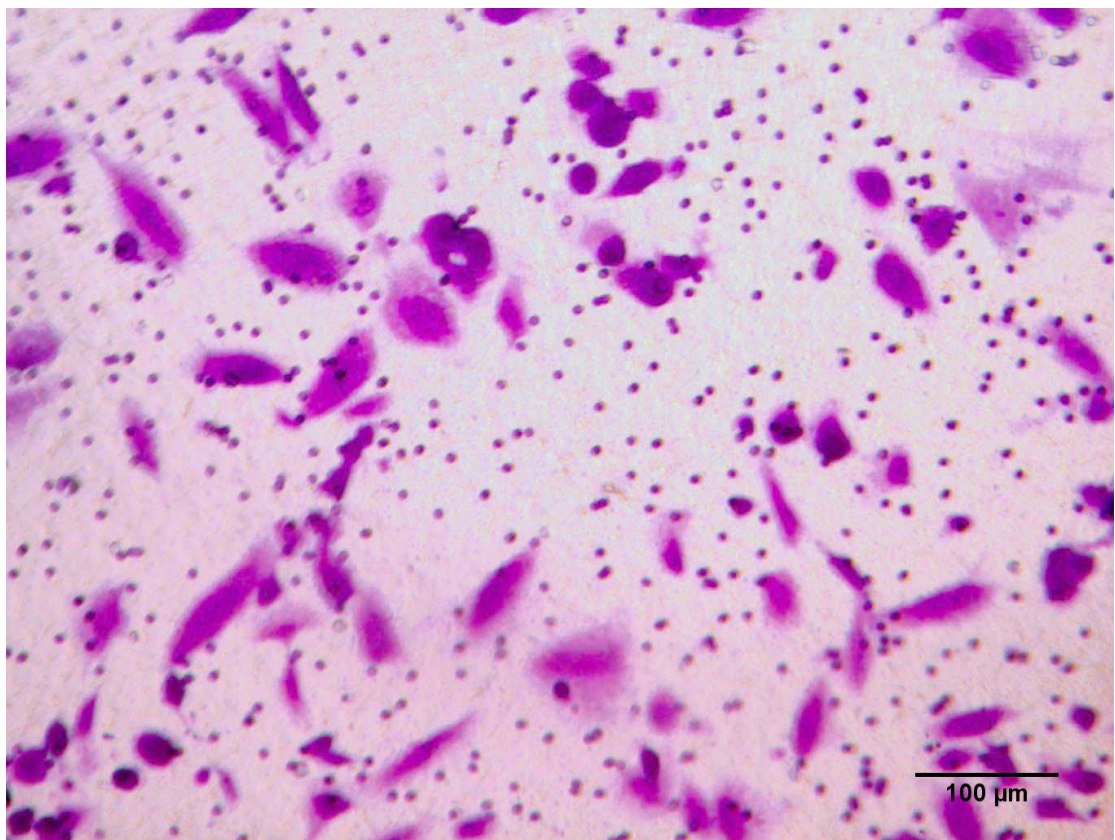
Transwell-HSC-3-siRNA(2)



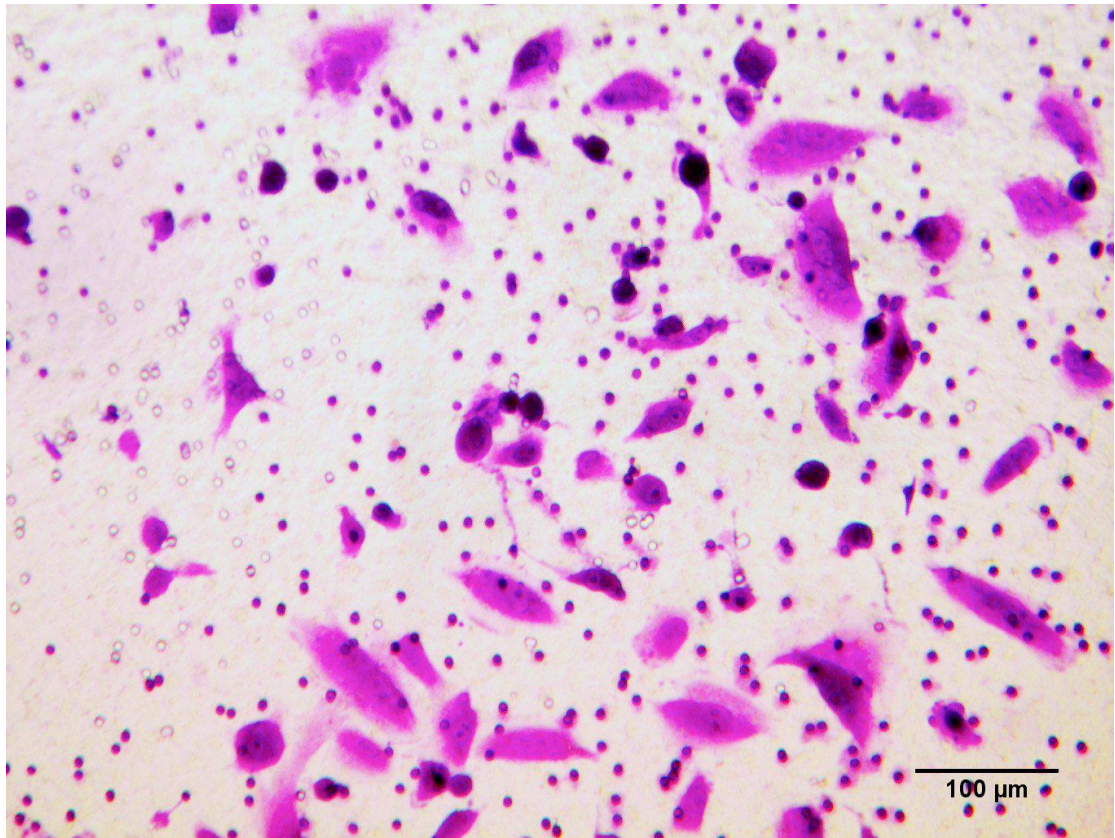
Transwell-HSC-3-siRNA(3)



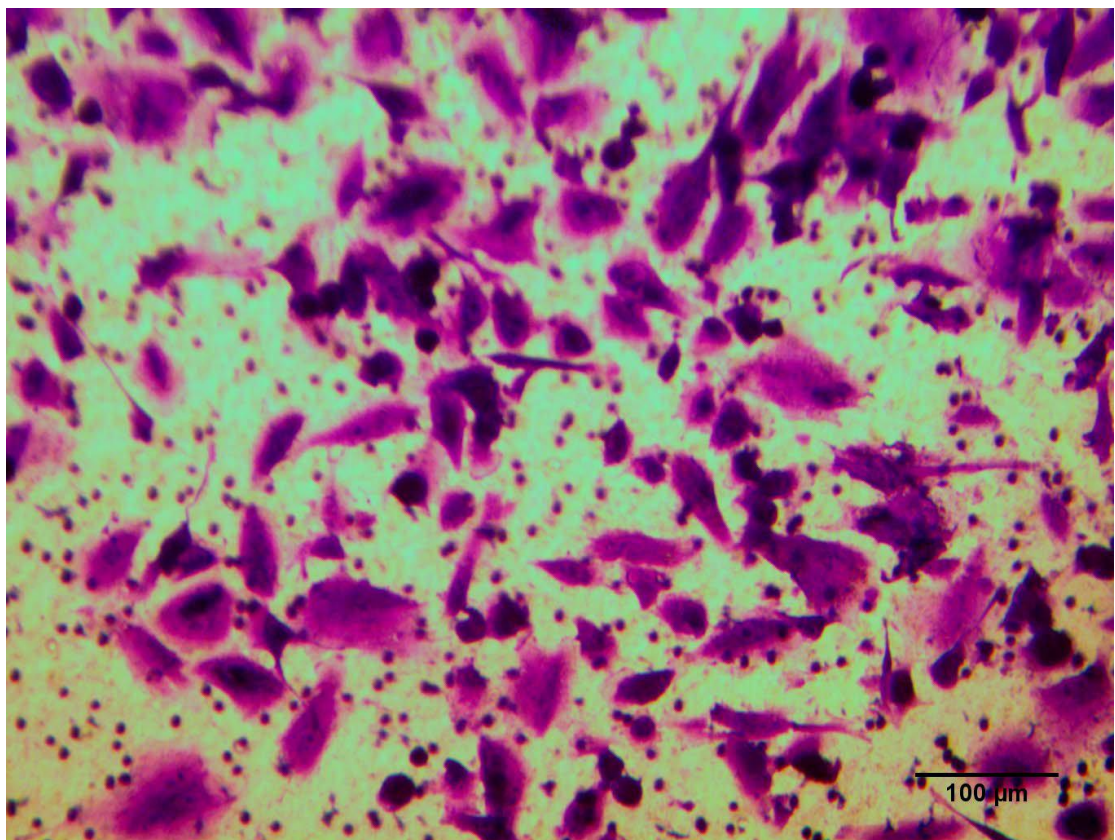
Transwell-HSC-3-siRNA(4)



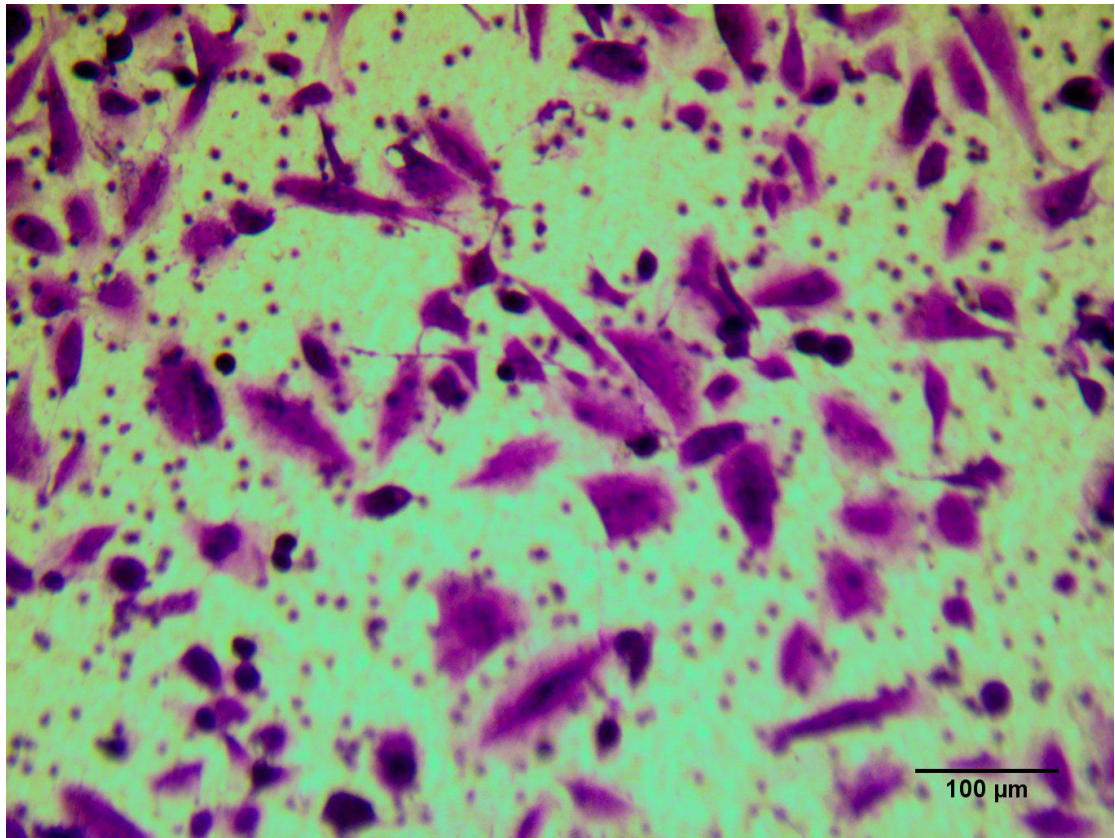
Transwell-HSC-3-siRNA(5)



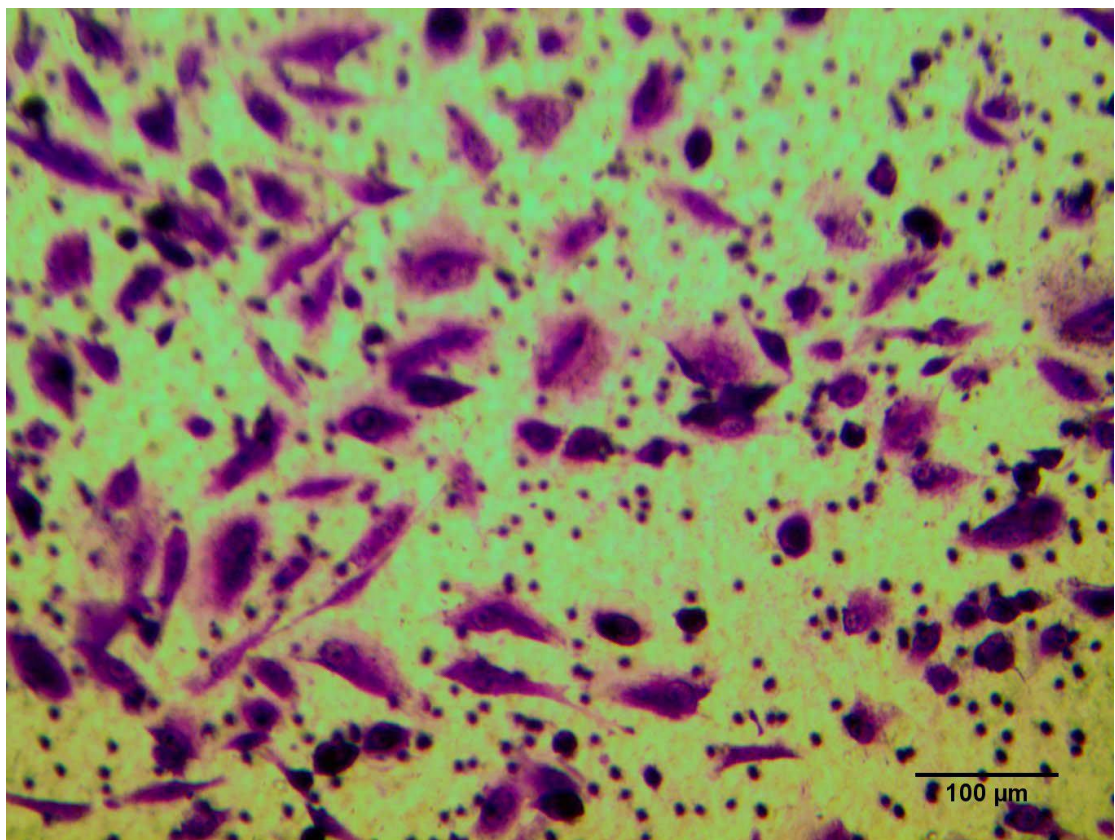
Transwell-SCC-4-Blank(1)



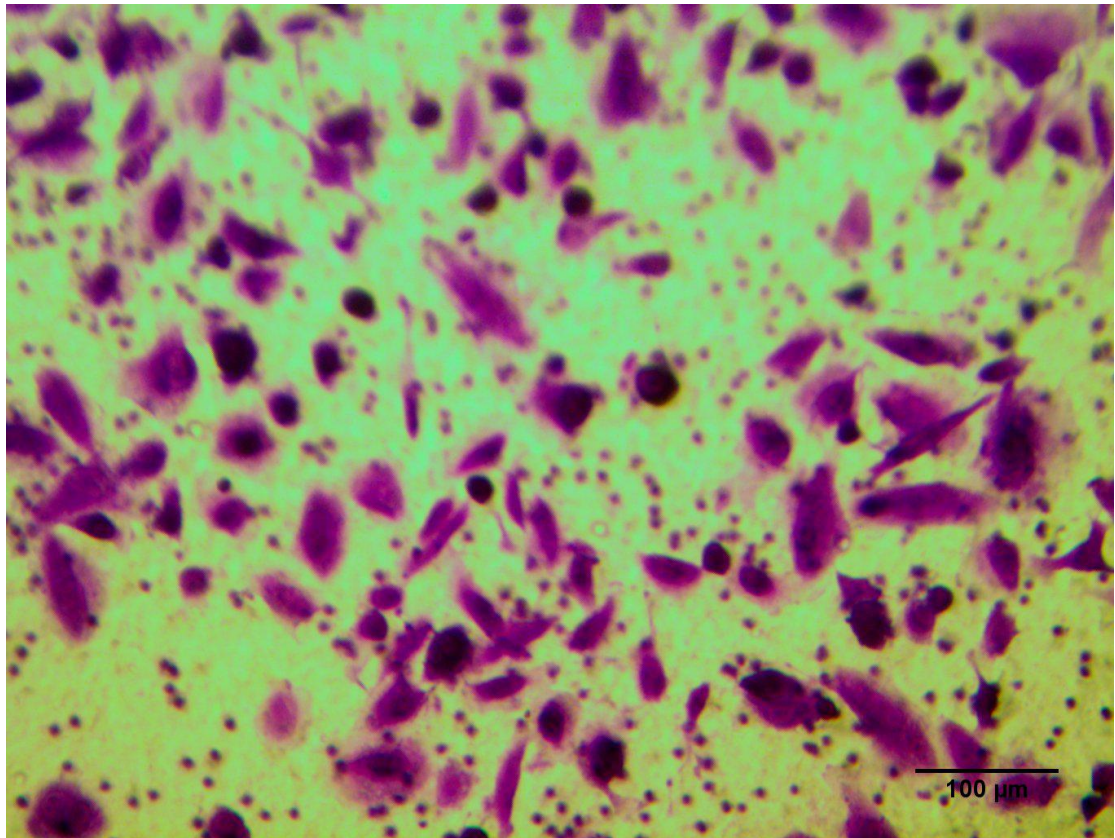
Transwell-SCC-4-Blank(2)



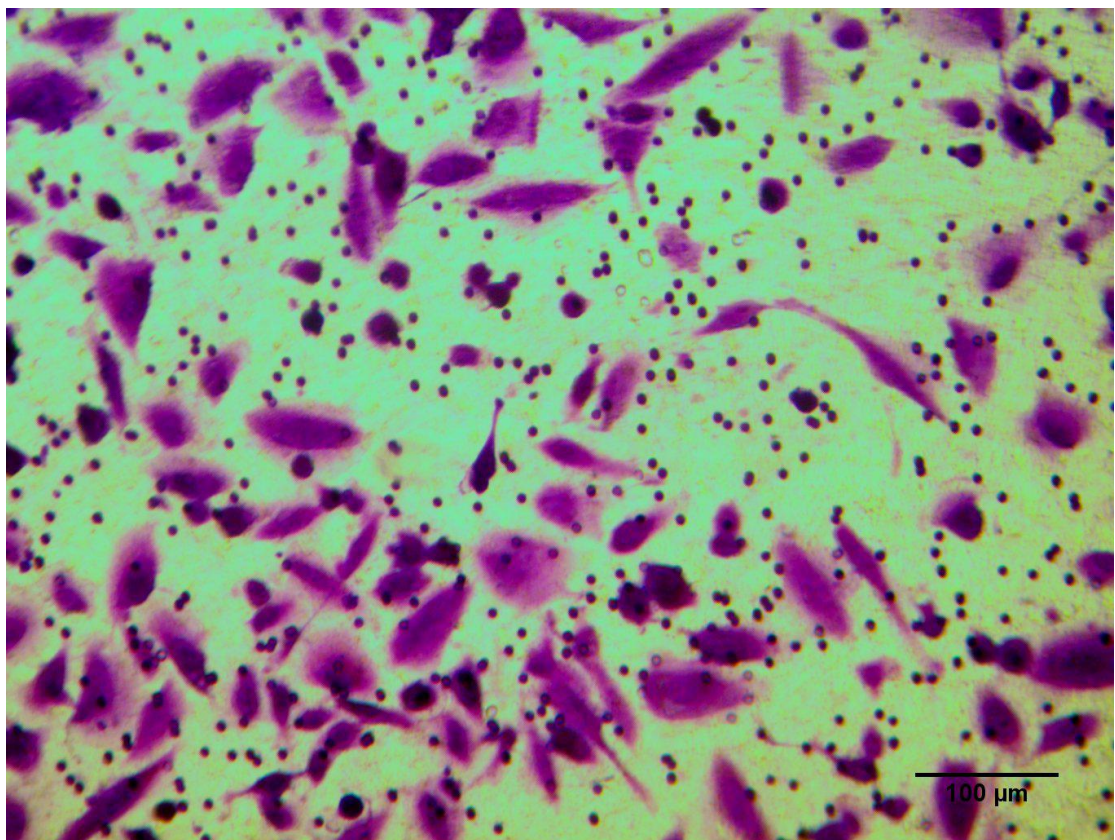
Transwell-SCC-4-Blank(3)



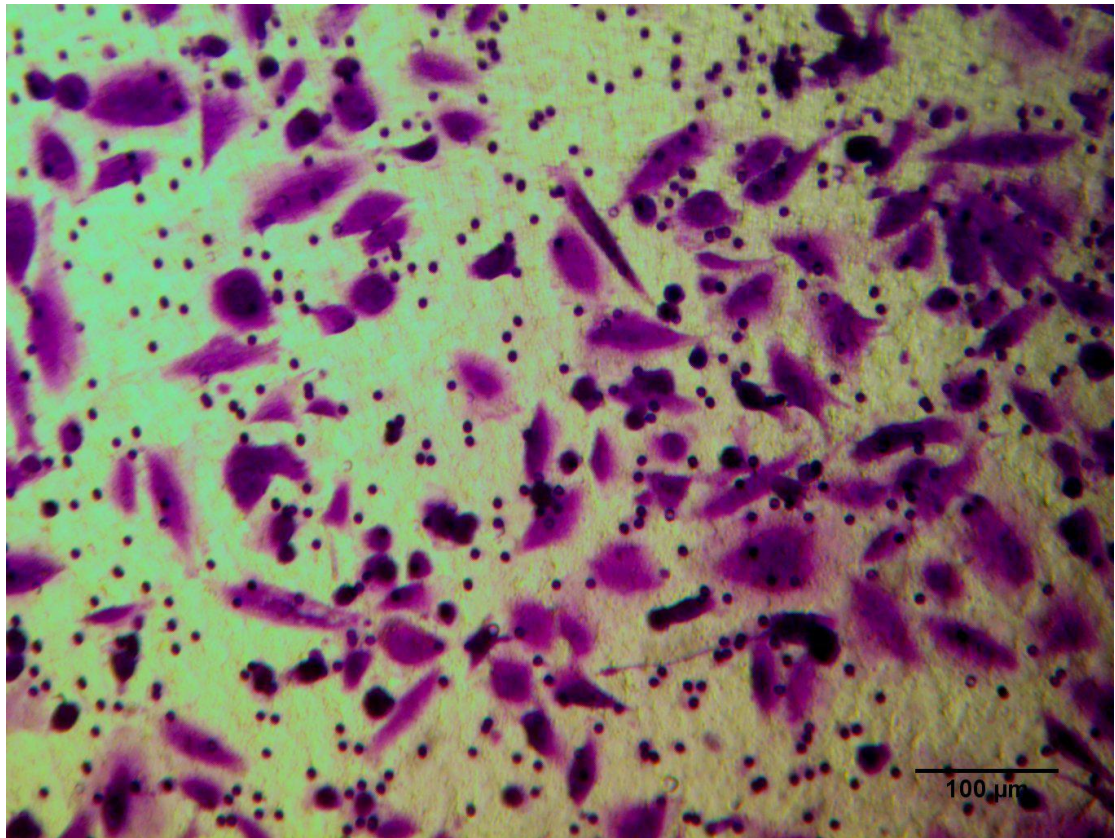
Transwell-SCC-4-Blank(4)



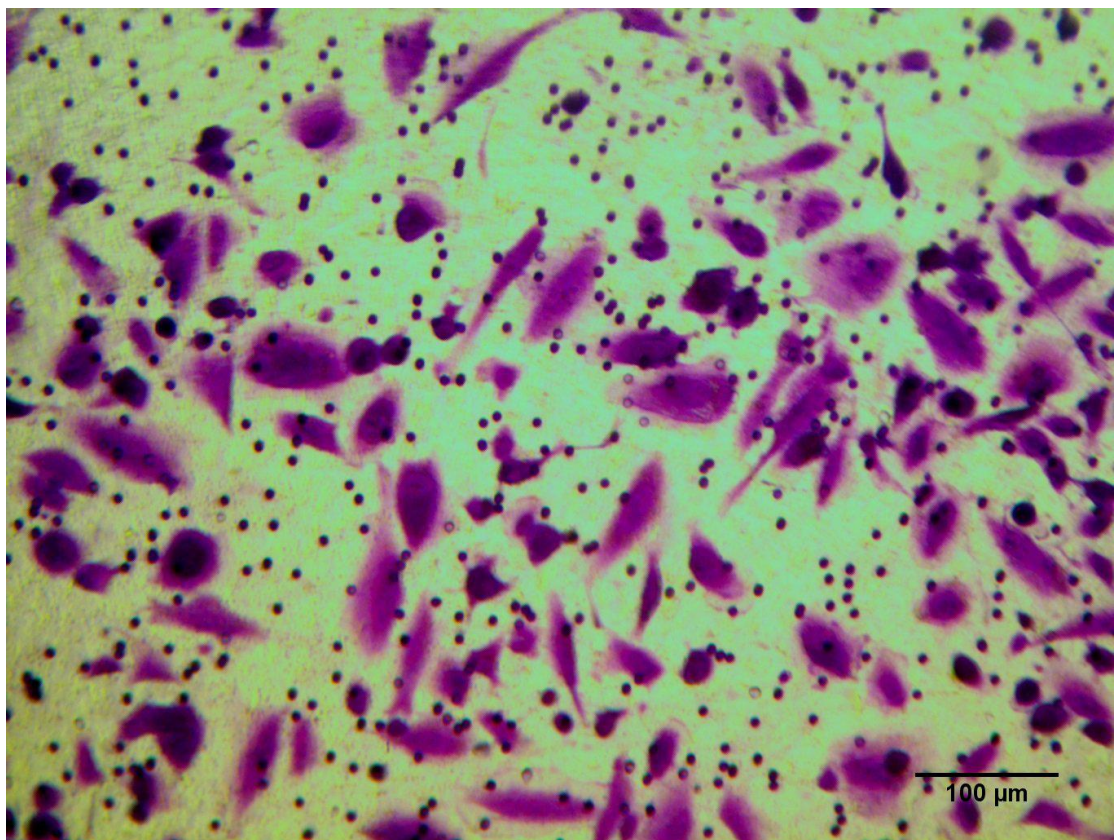
Transwell-SCC-4-Blank(5)



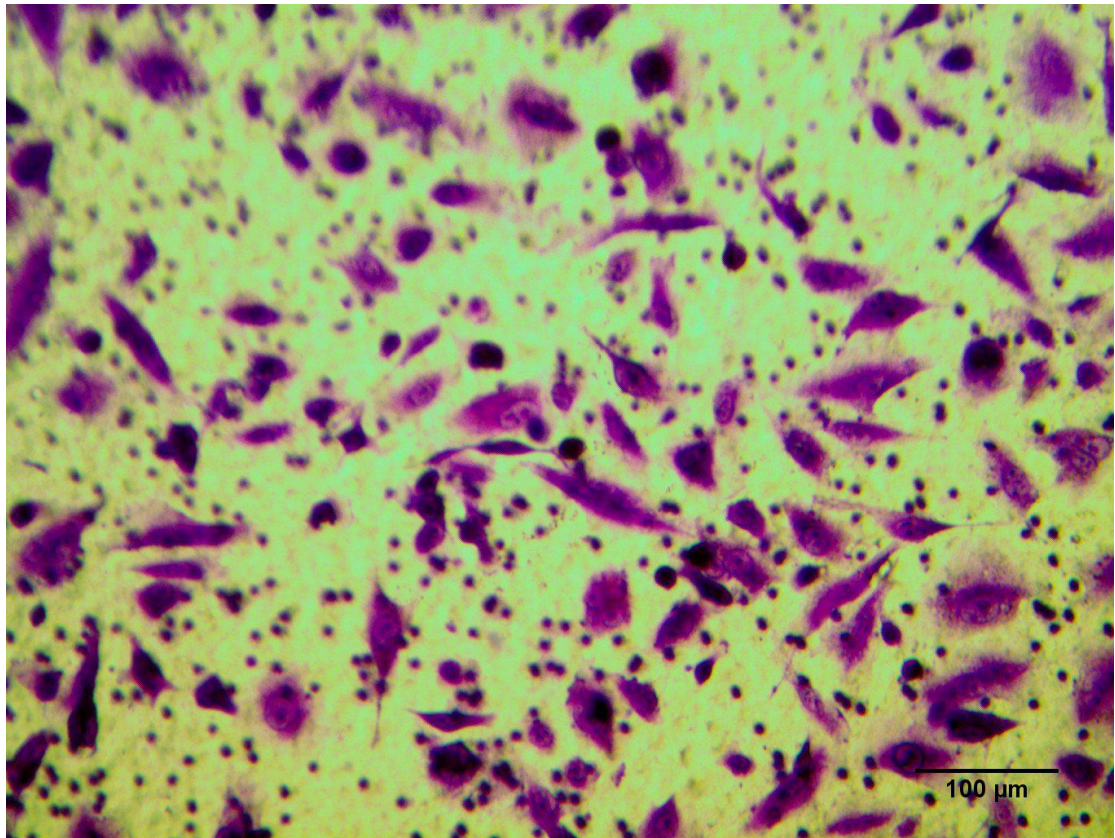
Transwell-SCC-4-NC(1)



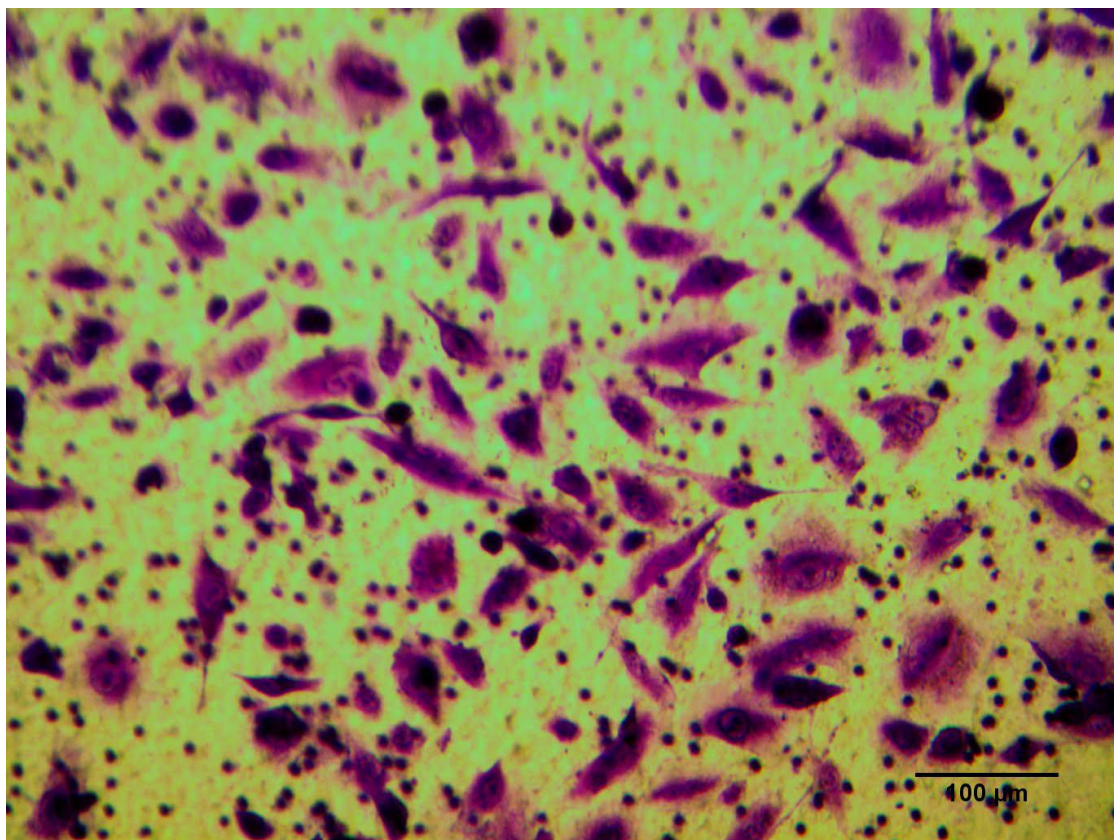
Transwell-SCC-4-NC(2)



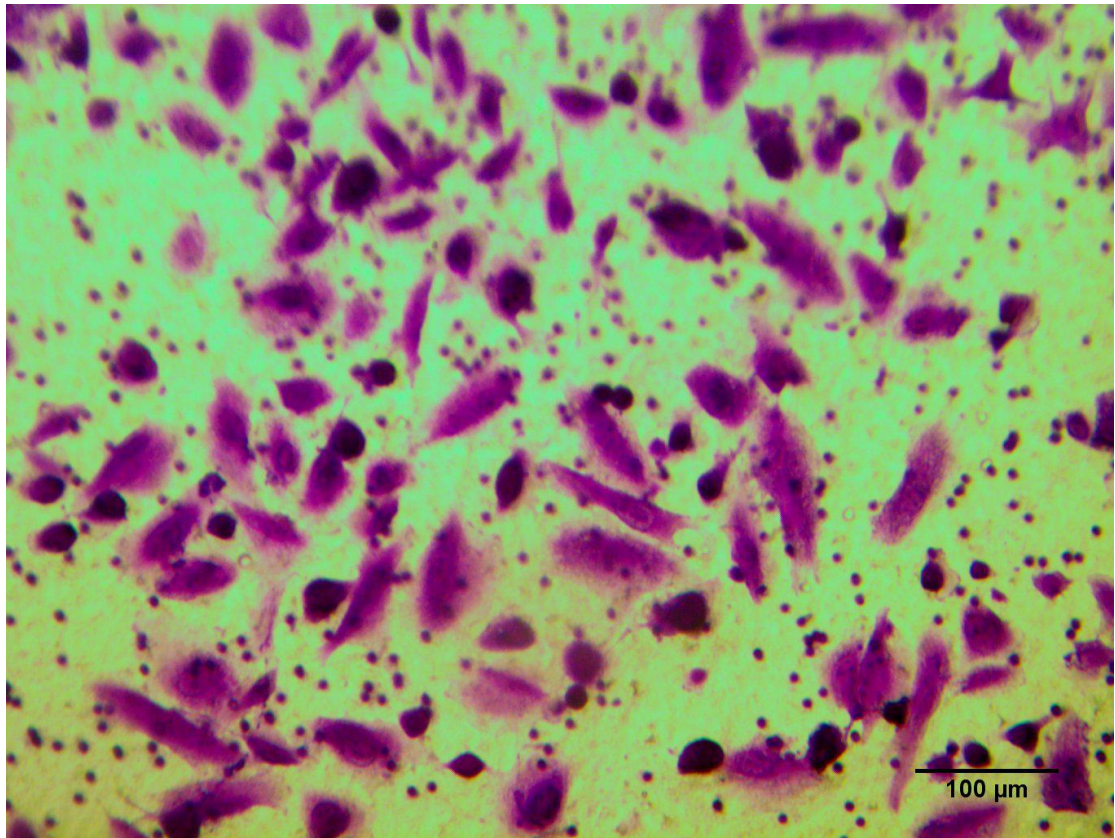
Transwell-SCC-4-NC(3)



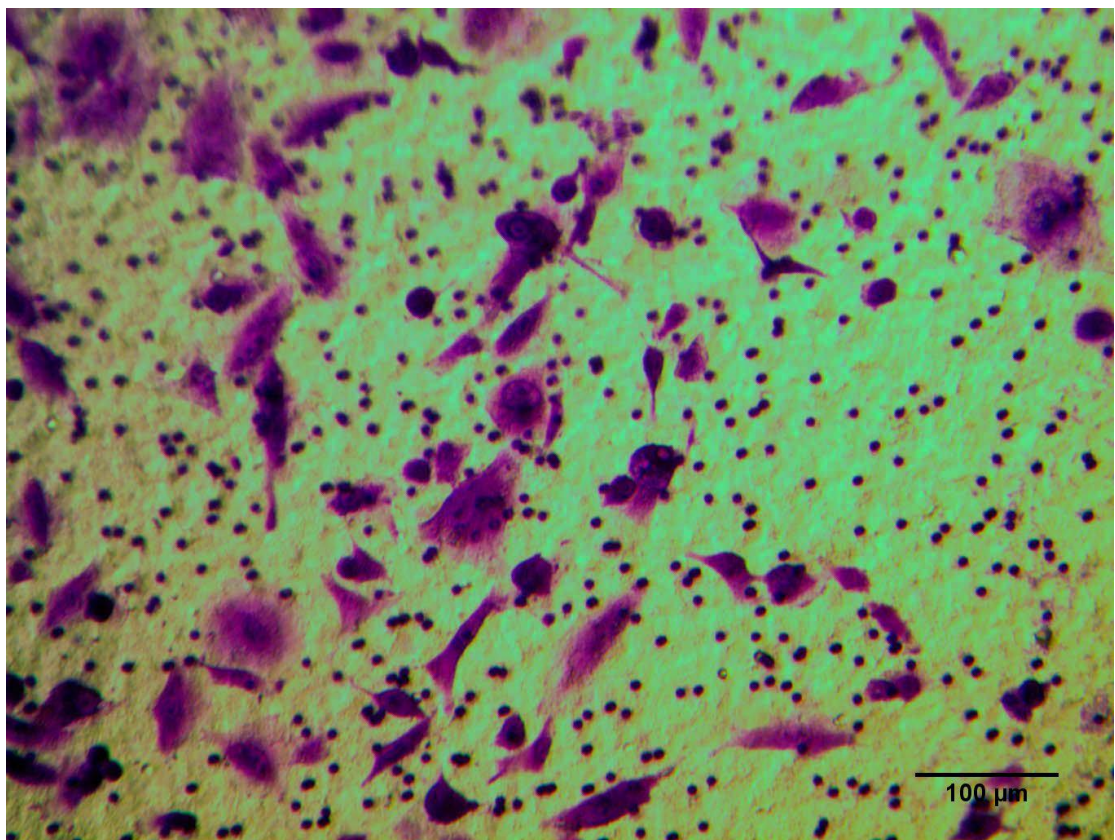
Transwell-SCC-4-NC(4)



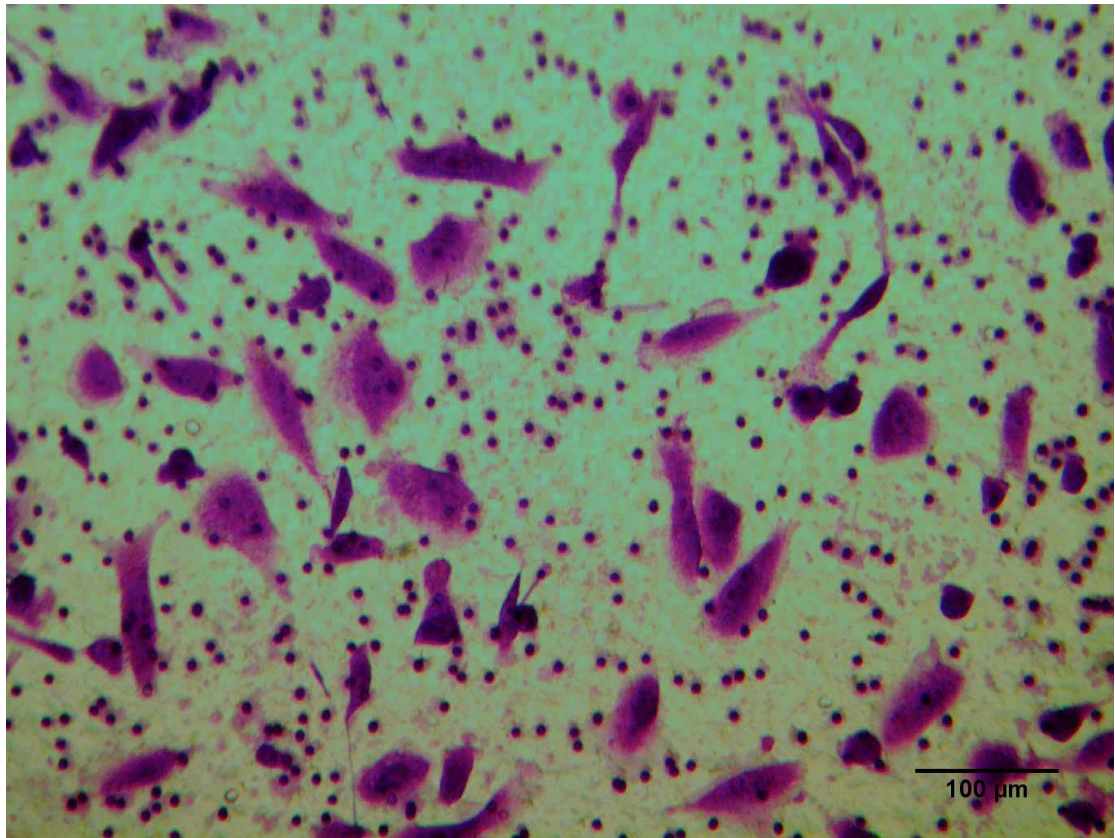
Transwell-SCC-4-NC(5)



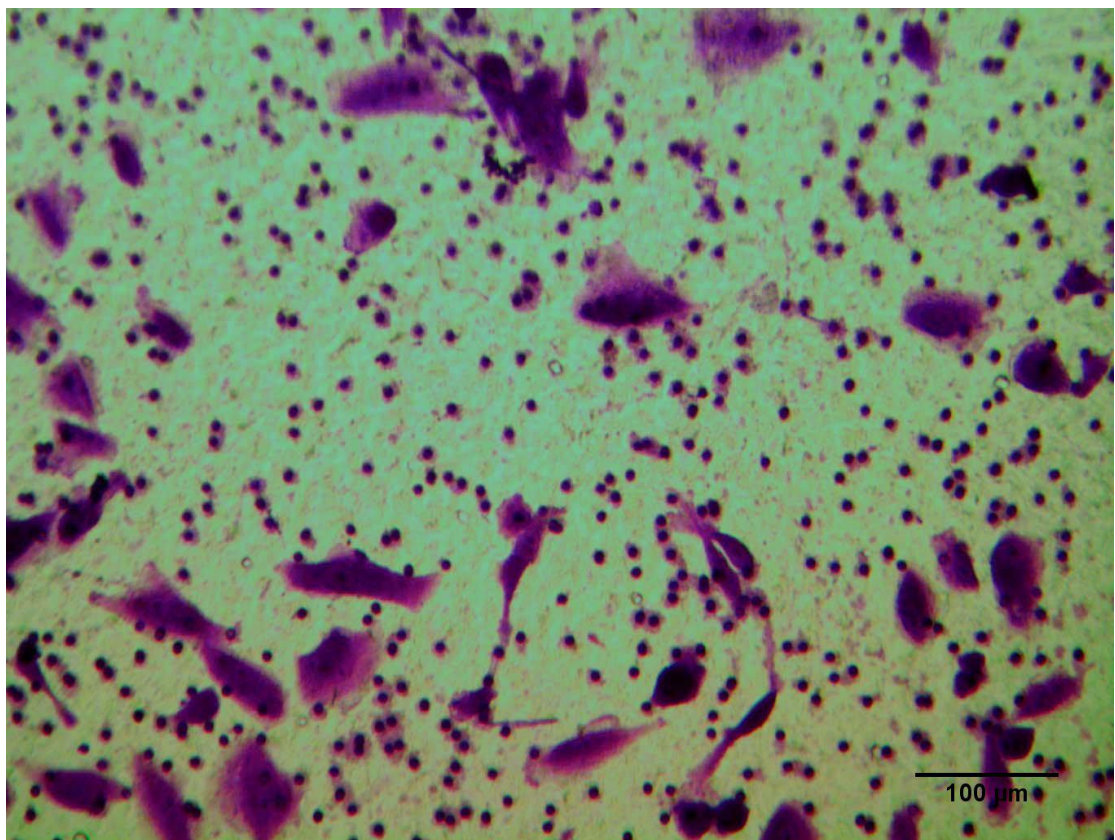
Transwell-SCC-4-siRNA(1)



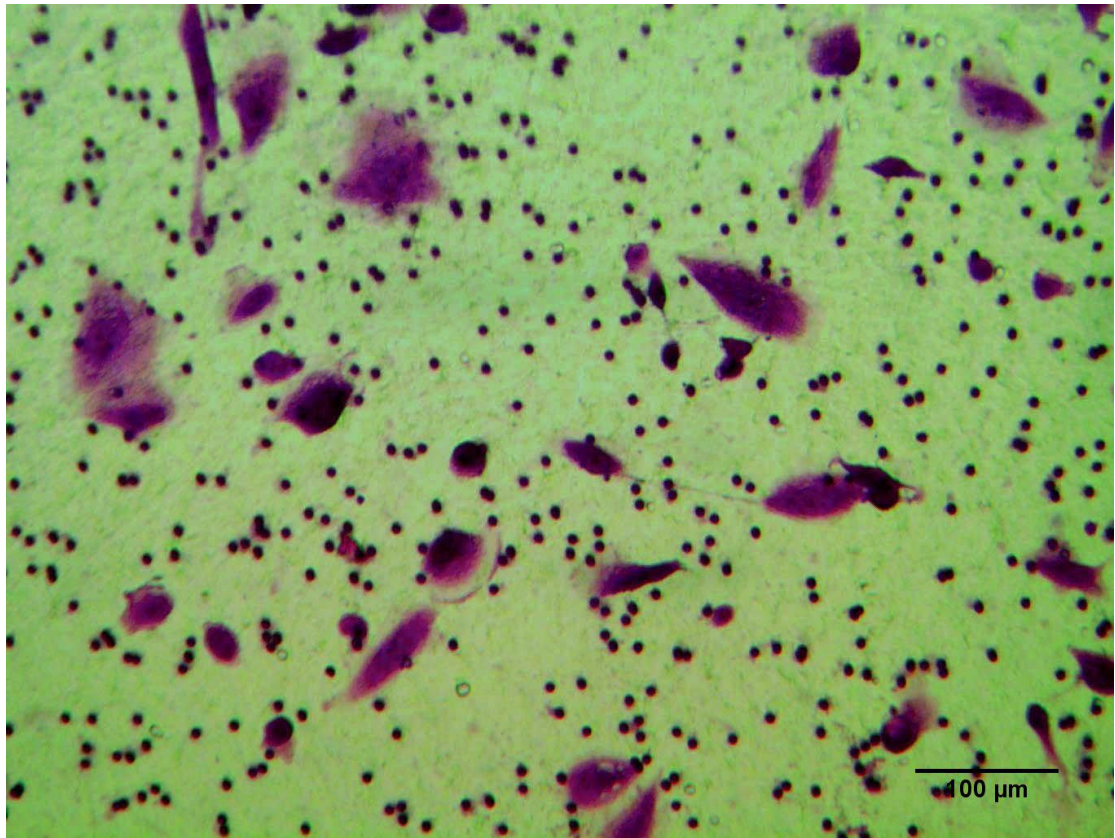
Transwell-SCC-4-siRNA(2)



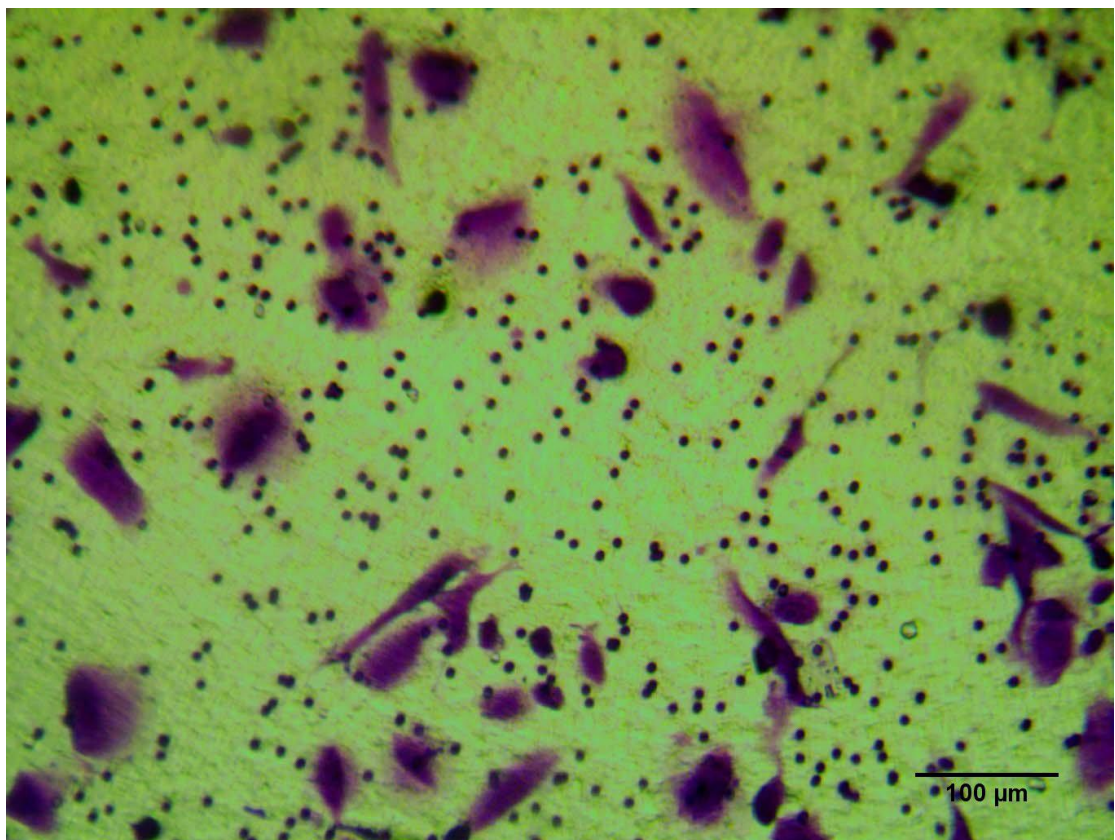
Transwell-SCC-4-siRNA(3)



Transwell-SCC-4-siRNA(4)



Transwell-SCC-4-siRNA(5)



Western blot

Fig.3 Original western blot1

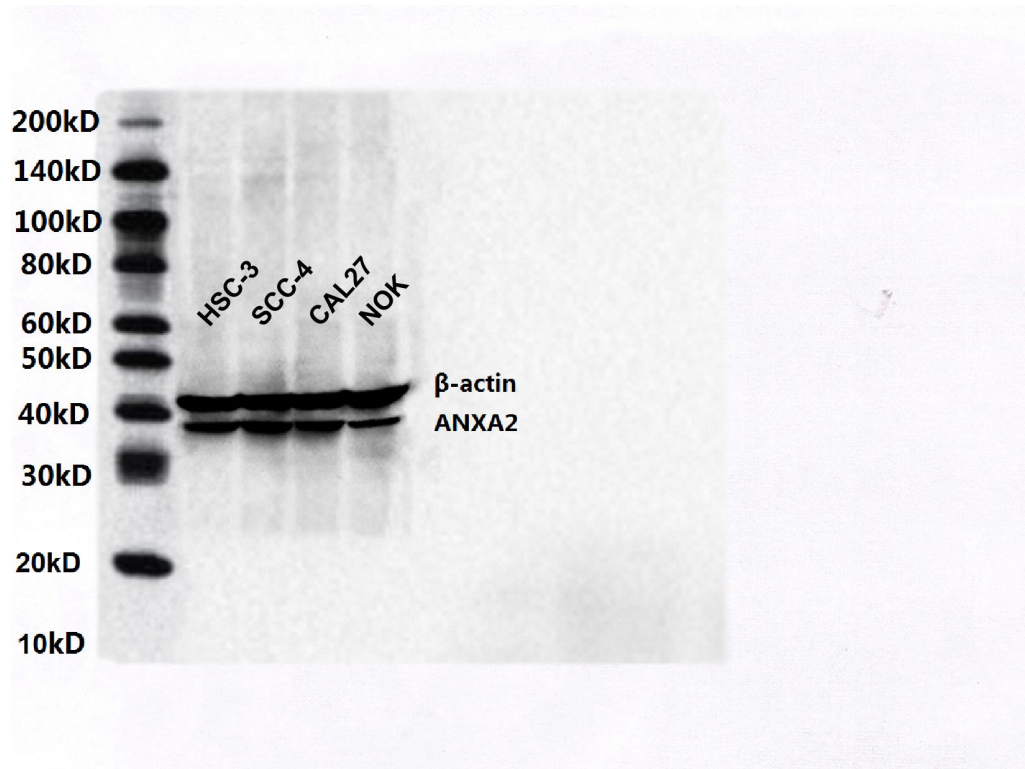
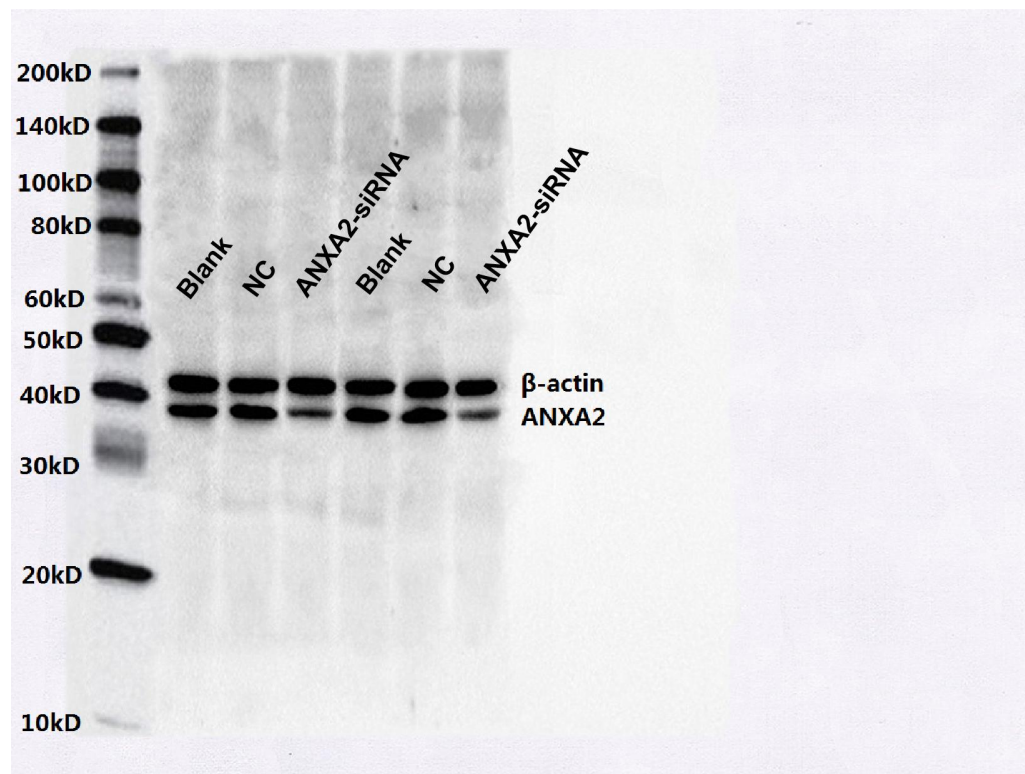


Fig.4 Original western blot1



Original Data

No.	TNM stage	differentiation	LNM	staining intensity of IHC	
				OSCC Tissue	Noncancer tissue
1	I	L	Y	2	1
2	I	L	N	1	0
3	II	M	Y	3	2
4	I	M	Y	2	1
5	I	L	Y	2	1
6	I	H	N	1	0
7	II	M	Y	3	2
8	II	M	Y	3	1
9	III	H	N	2	0
10	IV	H	Y	3	2
11	I	M	N	1	0
12	III	H	N	1	0
13	III	M	N	2	1
14	I	L	N	0	0
15	III	M	N	2	1
16	I	L	Y	2	0
17	IV	H	N	3	2
18	III	H	N	3	2
19	III	M	N	2	1
20	II	L	N	3	2
21	III	M	N	2	1
22	III	H	N	1	0
23	IV	H	N	3	1
24	III	M	N	2	1
25	I	L	Y	2	0
26	I	L	Y	2	1
27	II	M	N	3	2

28	II	M	N	2	1
29	I	L	Y	2	1
30	I	L	Y	2	1
31	I	H	N	1	0
32	II	M	N	3	2
33	II	M	N	3	2
34	I	L	Y	2	0
35	II	M	N	3	2
36	I	L	Y	2	0
37	II	H	N	1	0
38	III	H	N	3	1
39	III	H	N	3	1
40	I	L	N	0	0
41	III	H	N	1	0
42	IV	H	N	3	2
43	III	H	N	2	0
44	III	M	N	2	0
45	III	H	N	3	1
46	III	H	N	3	1
47	I	L	Y	2	0
48	II	H	N	1	0
49	II	M	N	3	2
50	I	M	Y	2	1
51	I	M	Y	2	1
52	II	M	N	3	1
53	II	M	N	3	2
54	I	L	Y	2	1
55	II	M	N	3	2
56	II	L	N	2	1
57	III	M	N	2	1

58	IV	H	N	3	2
59	II	H	N	1	0
60	III	M	N	2	1
61	II	L	N	0	0
62	III	M	N	2	1
63	III	H	N	3	2
64	I	L	Y	2	1
65	I	L	Y	3	1
66	I	H	N	1	1
67	II	M	N	3	1
68	I	M	Y	3	0
69	I	L	N	1	0
70	III	M	N	2	1
71	III	H	N	3	2
72	III	M	N	2	0
73	IV	H	N	3	1
74	I	M	N	1	0
75	III	M	N	2	0
76	III	L	N	2	0
77	II	H	N	1	1
78	III	M	N	2	0
79	III	H	N	3	2
80	III	M	N	2	0
81	III	H	N	3	1
82	II	H	N	1	0
83	II	M	N	3	2
84	II	L	Y	2	0
85	I	L	Y	2	1
86	II	M	N	1	0
87	I	L	Y	2	1

88	I	L	Y	2	0
89	II	M	N	3	1
90	I	L	N	2	0
91	III	H	N	2	0
92	II	H	N	1	1
93	III	M	N	2	0
94	IV	H	N	3	1
95	III	H	N	2	1
96	II	H	N	1	0
97	III	M	N	2	0
98	III	M	N	2	0
99	I	L	N	0	0
100	II	L	N	1	0
101	III	H	N	1	1
102	III	H	N	3	2
103	III	M	N	2	0
104	III	H	N	3	2
105	III	M	N	2	0
106	III	H	N	3	2
107	III	H	N	1	1
108	III	M	N	2	1
109	II	M	N	3	2
110	I	L	Y	2	1
111	III	M	Y	1	1
112	III	H	N	1	1
113	II	M	N	3	2
114	III	H	N	3	2
115	II	L	N	2	0
116	II	H	N	3	2
117	II	M	N	3	2

118	II	L	Y	2	0
119	III	H	N	2	1
120	IV	H	N	3	2
121	III	H	N	3	2
122	II	L	N	3	2
123	II	L	N	2	0
124	IV	H	Y	1	1

Note	L=low	N=no	0~1=negative	0~1=negative
	M=moderately	Y=yes	2~3=positive	2~3=positive
	H=high			