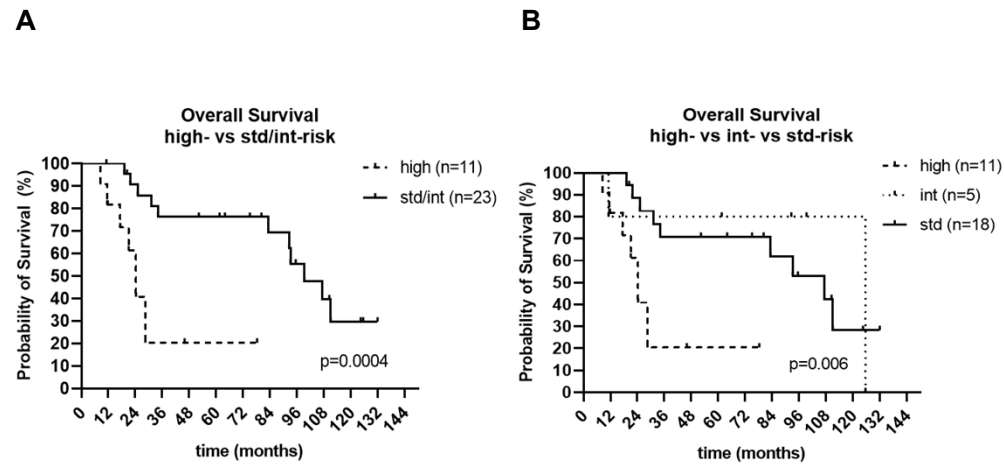
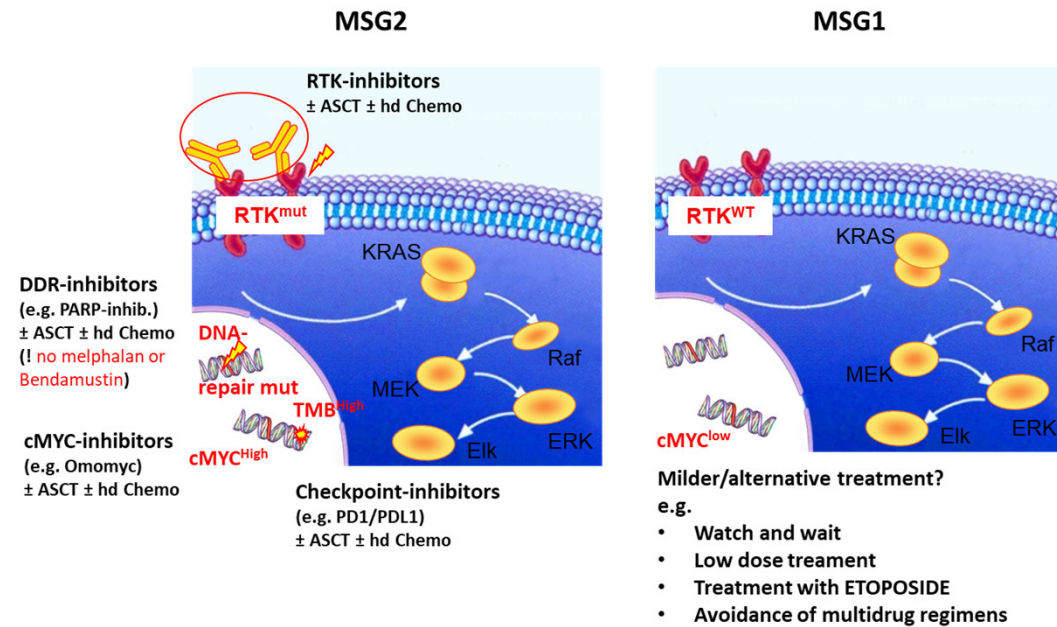


**Figure S1**



**Figure S1 Correlation of risk-status with survival.** Cases were either divided into two groups (high-risk vs intermediate/standard-risk) (**A**) or divided into three groups (high-risk vs intermediate-risk vs standard-risk) (**B**) according to the guidelines of the Mayo Clinic and the WHO (see material and methods).

**Figure S2**



**Figure S3 Hypothesis.** MSG2-MM may require combined therapies, including for instance RTK- or PARP1-inhibitors while MSG-1 MM seems to constitute a more indolent subgroup that may profit from milder treatment options and the avoidance of multidrug regimens. DDR: DNA damage repair, ASCT: Autologous stem cell transplantation, hd: high dose, TMB: tumor mutational burden.