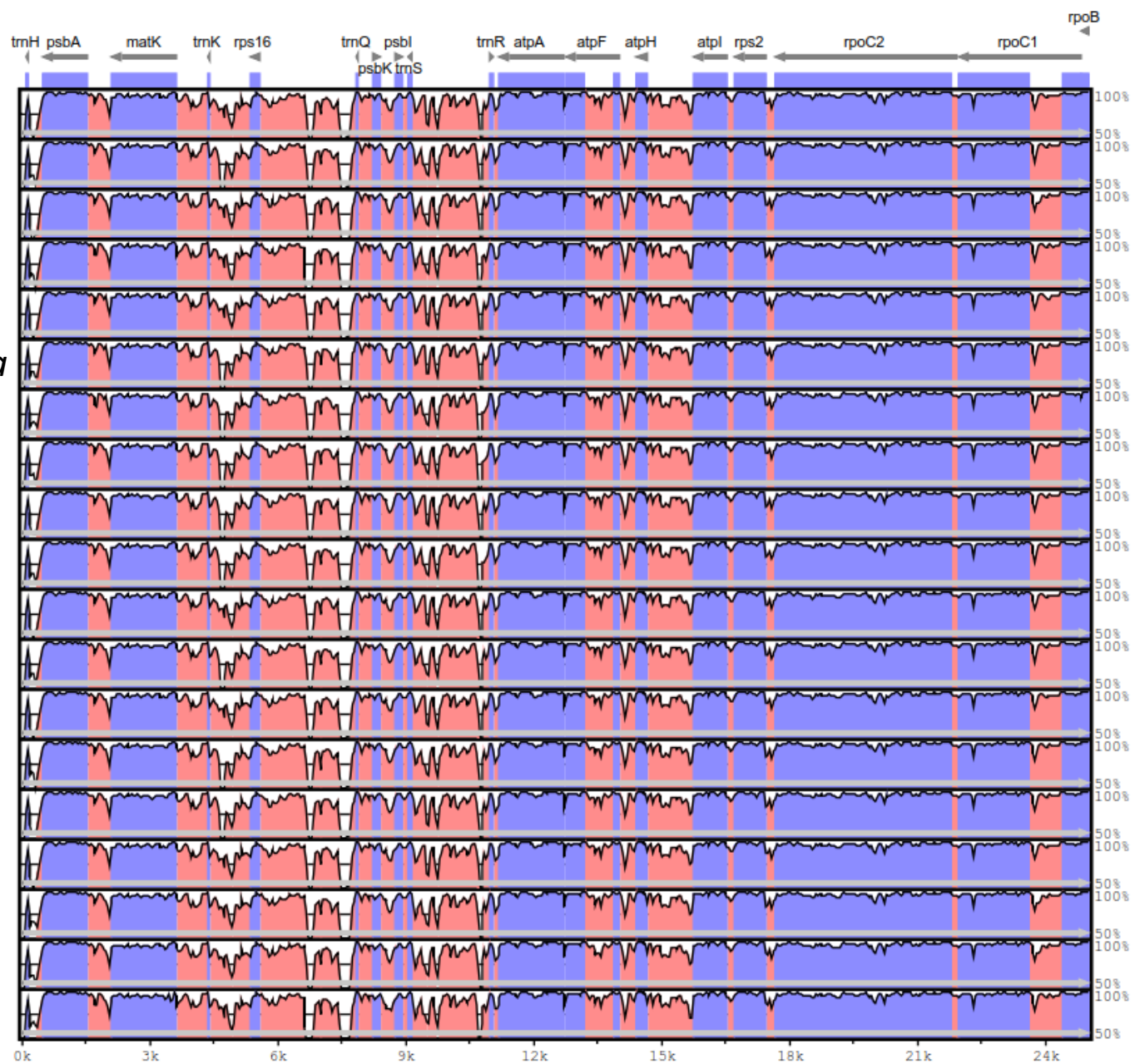
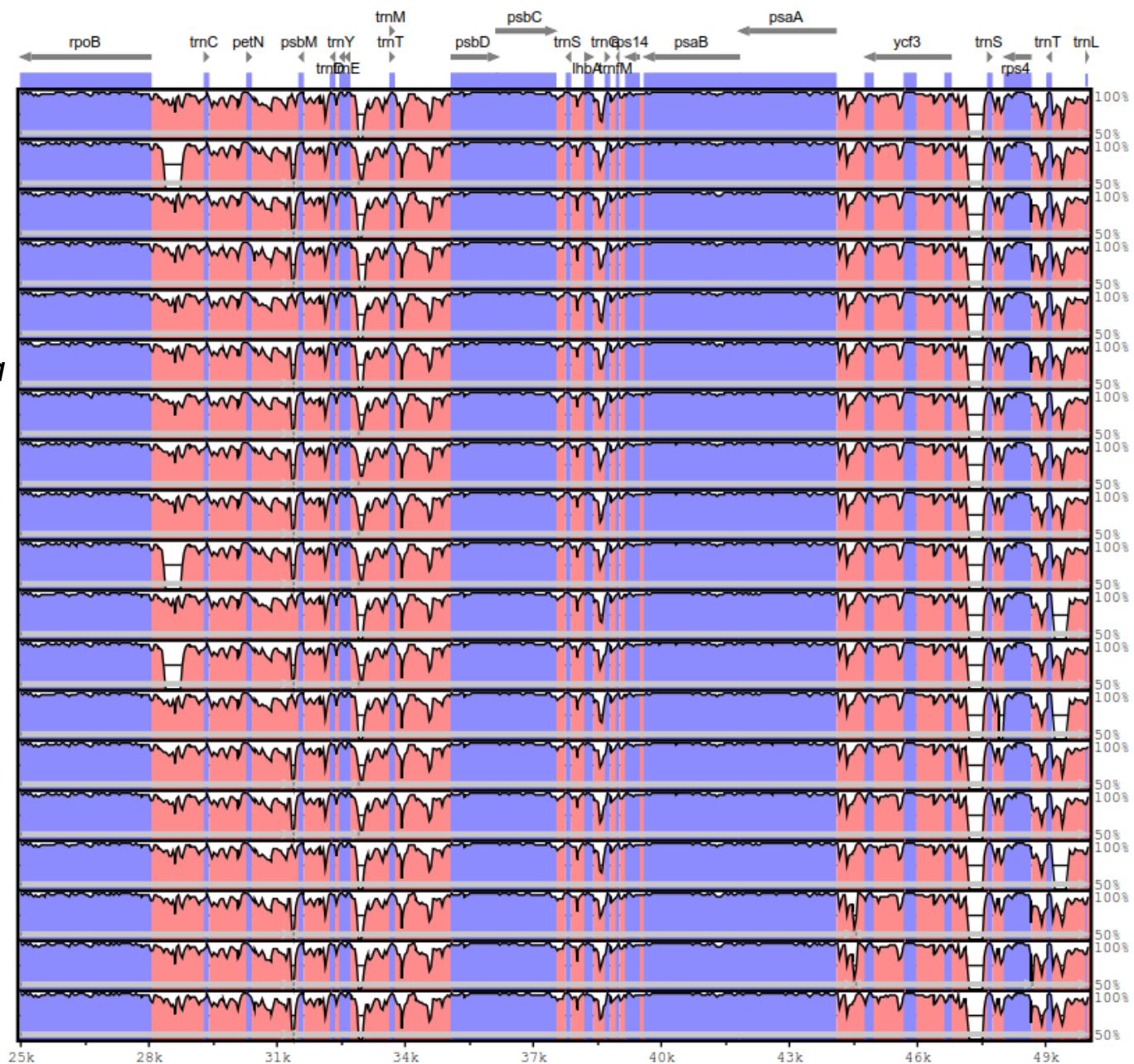


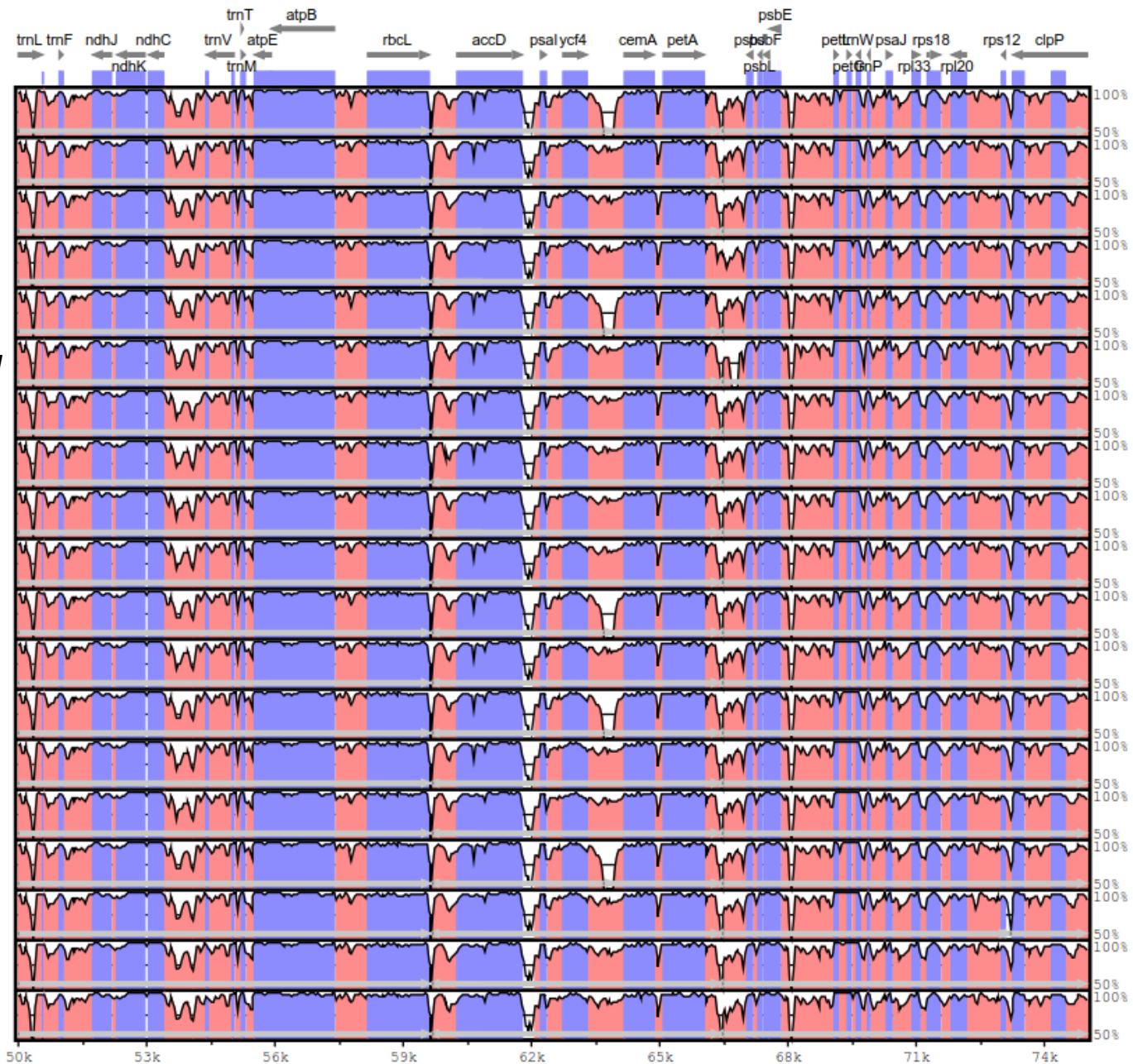
(a)



(b)



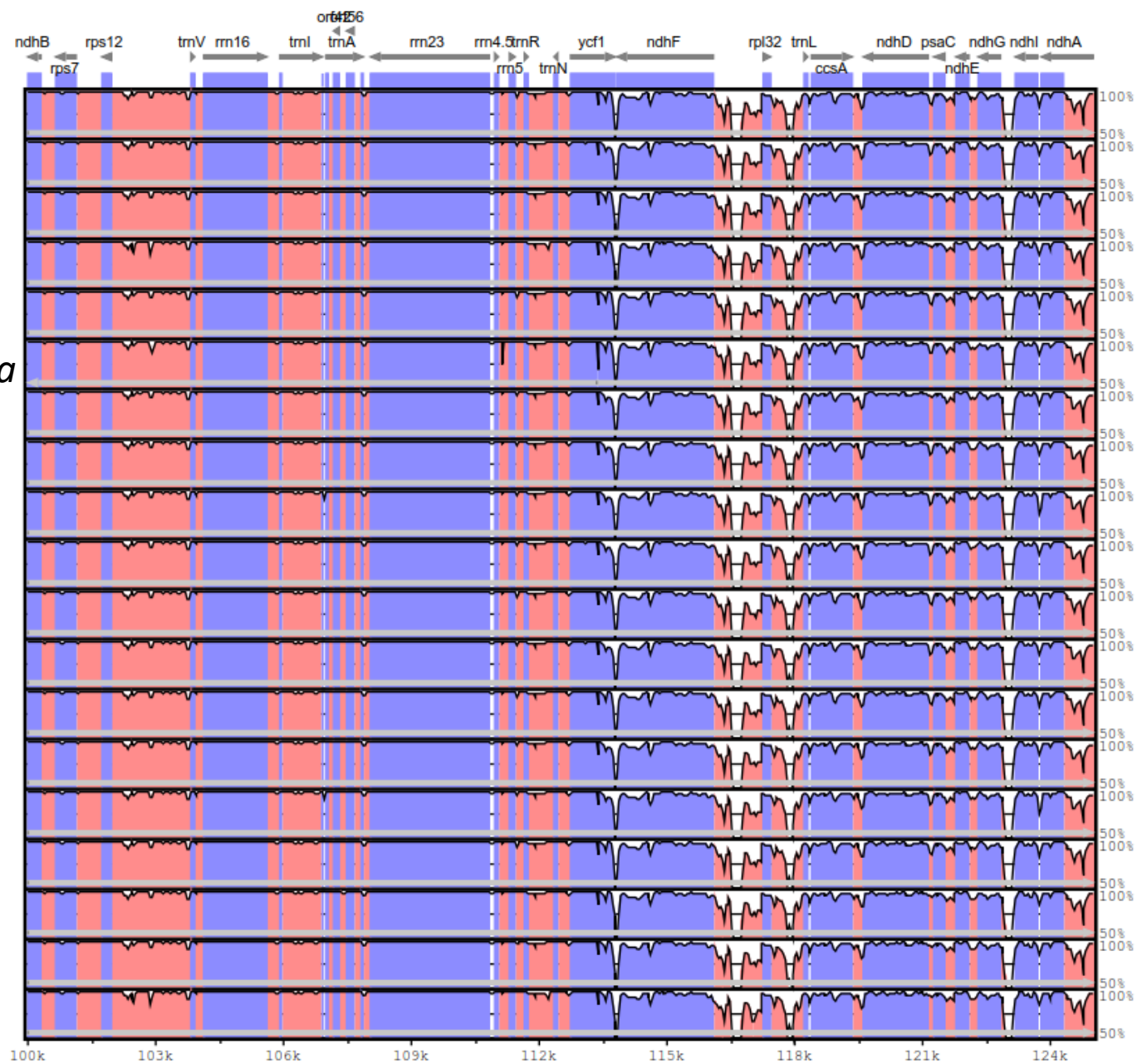
(c)



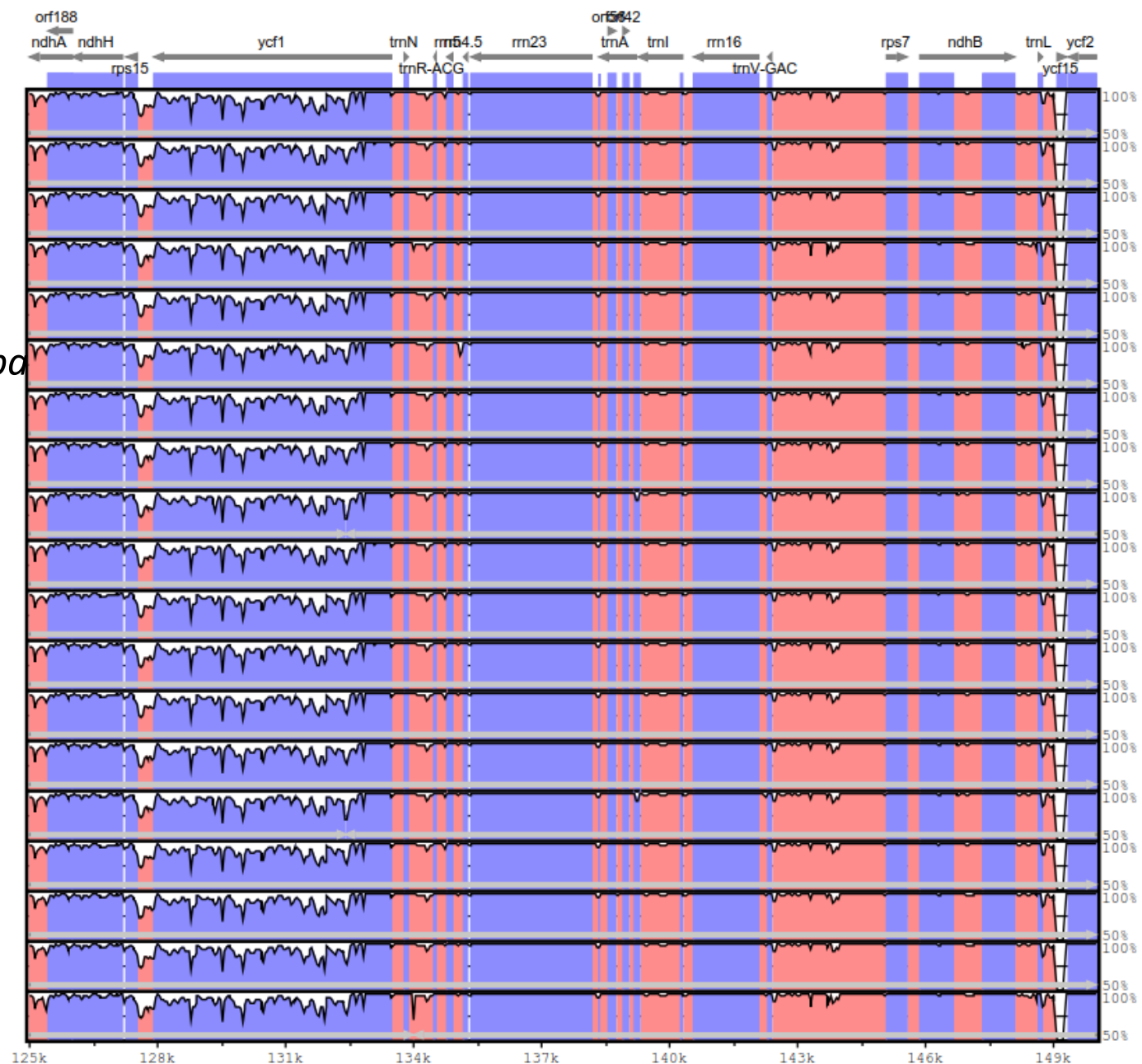




(e)

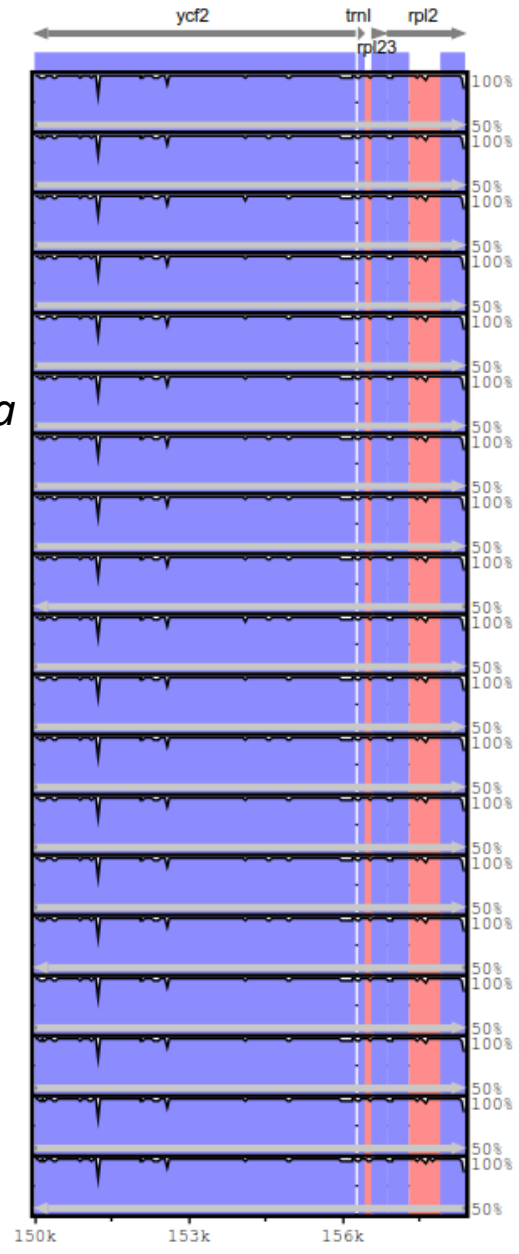


(f)



(g)

- I. latifolia*
- I. lohfauiensis*
- I. kwangtungensis*
- I. triflora*
- I. ficoidea*
- I. rotunda var. microcarpa*
- I. asprella*
- I. pubescens*
- I. asprella var. tapuensis*
- I. hanceana*
- I. cinerea*
- I. championii*
- I. graciliflora*
- I. memecylifolia*
- I. chapaensis*
- I. cornuta*
- I. lancilimba*
- I. dasyphylla*
- I. viridis*



Supplementary Figure 1. Identity plot comparing the chloroplast genomes of 19 *Ilex* using *Helwingia himalaica* as a reference sequence. The vertical scale indicates the percentage of identity, ranging from 50 to 100%. The horizontal axis indicates the coordinates within the chloroplast genome. Protein-coding regions are labeled with blue while the conserved non-coding sequences (CNS) are labeled with red.