

Isatuximab as monotherapy and combined with dexamethasone in patients with relapsed/refractory multiple myeloma

SUPPLEMENTAL DATA

Authors: Meletios Dimopoulos,¹ Sara Bringhen,² Pekka Anttila,³ Marcelo Capra,⁴ Michele Cavo,⁵ Craig Cole,⁶ Cristina Gasparetto,⁷ Vania Hungria,⁸ Matthew Jenner,⁹ Vladimir Vorobyev,¹⁰ Eduardo Yanez Ruiz,¹¹ Jian Y. Yin,¹² Rao Saleem,¹² Maeva Hellet,¹³ Sandrine Macé,¹⁴ Bruno Paiva,¹⁵ Ravi Vij¹⁶

Affiliations: ¹National and Kapodistrian University of Athens, Athens, Greece; ²Myeloma Unit, Division of Hematology, University of Torino, Azienda Ospedaliero-Universitaria Città della Salute e della Scienza di Torino, Torino, Italy; ³Division of Hematology, Comprehensive Cancer Center, Helsinki University and Helsinki University Hospital, Helsinki, Finland; ⁴Hospital Mãe de Deus, Porto Alegre, Brazil; ⁵“Seràgnoli” Institute of Hematology, Sant'Orsola-Malpighi University Hospital, Bologna, Italy; ⁶University of Michigan Comprehensive Cancer Center, Ann Arbor, MI, USA; ⁷Duke University Medical Center, Durham, NC, USA; ⁸Clínica São Germano, São Paulo, Brazil; ⁹Department of Haematology, University Hospital Southampton NHS Foundation Trust, Southampton, UK; ¹⁰S.P. Botkin Hospital, Moscow, Russia; ¹¹Universidad de la Frontera, Temuco, Chile; ¹²Sanofi, Bridgewater, MA, USA; ¹³Ividata (for Sanofi), Paris, France; ¹⁴Sanofi, Paris, France; ¹⁵Clinica Universidad de Navarra, Centro de Investigación Médica Aplicada (CIMA), Instituto de Investigación Sanitaria de Navarra (IdiSNA), CIBER-ONC number CB16/12/00369, Pamplona, Spain; ¹⁶Washington University, St. Louis, MO, USA

Corresponding author: Meletios Dimopoulos

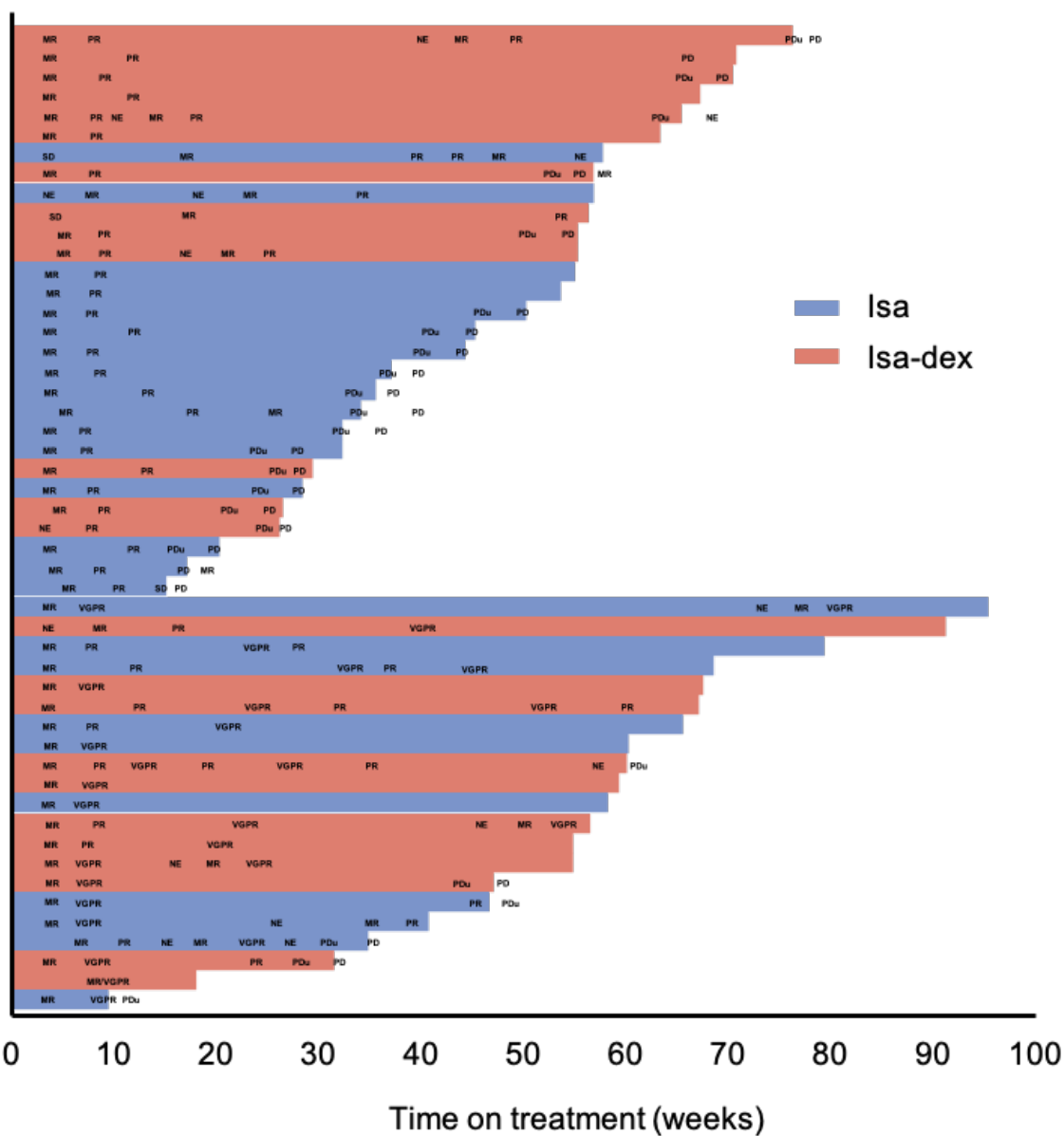
Email: mdimop@med.uoa.gr

Supplemental Table. Serious TEAEs occurring in $\geq 2\%$ of patients, by system organ class and preferred term (all treated population)

System organ class Preferred term	Isatuximab (n = 109)		Isatuximab + dexamethasone (n = 55)	
	All grades	Grade ≥ 3	All grades	Grade ≥ 3
Serious TEAE, n (%)	51 (46.8)	46 (42.2)	25 (45.5)	25 (45.5)
Infections and infestations	23 (21.1)	23 (21.1)	12 (21.8)	12 (21.8)
Pneumonia	7 (6.4)	7 (6.4)	3 (5.5)	3 (5.5)
Bronchitis	1 (0.9)	1 (0.9)	3 (5.5)	3 (5.5)
Respiratory tract infection	3 (2.8)	3 (2.8)	1 (1.8)	1 (1.8)
Sepsis	3 (2.8)	3 (2.8)	2 (3.6)	2 (3.6)
Blood and lymphatic system disorders	5 (4.6)	4 (3.7)	2 (3.6)	2 (3.6)
Anemia	4 (3.7)	3 (2.8)	0	0
Musculoskeletal and connective tissue disorders	6 (5.5)	4 (3.7)	3 (5.5)	3 (5.5)
Pathological fracture	3 (2.8)	2 (1.8)	1 (1.8)	1 (1.8)
Renal and urinary disorders	4 (3.7)	4 (3.7)	2 (3.6)	2 (3.6)
Acute kidney injury	4 (3.7)	4 (3.7)	2 (3.6)	2 (3.6)
General disorders and administration site conditions	11 (10.1)	9 (8.3)	4 (7.3)	3 (5.5)
Disease progression	7 (6.4)	7 (6.4)	2 (3.6)	2 (3.6)
Injury, poisoning, and procedural complications	8 (7.3)	5 (4.6)	3 (5.5)	2 (3.6)
Infusion-related reaction	6 (5.5)	3 (2.8)	2 (3.6)	1 (1.8)

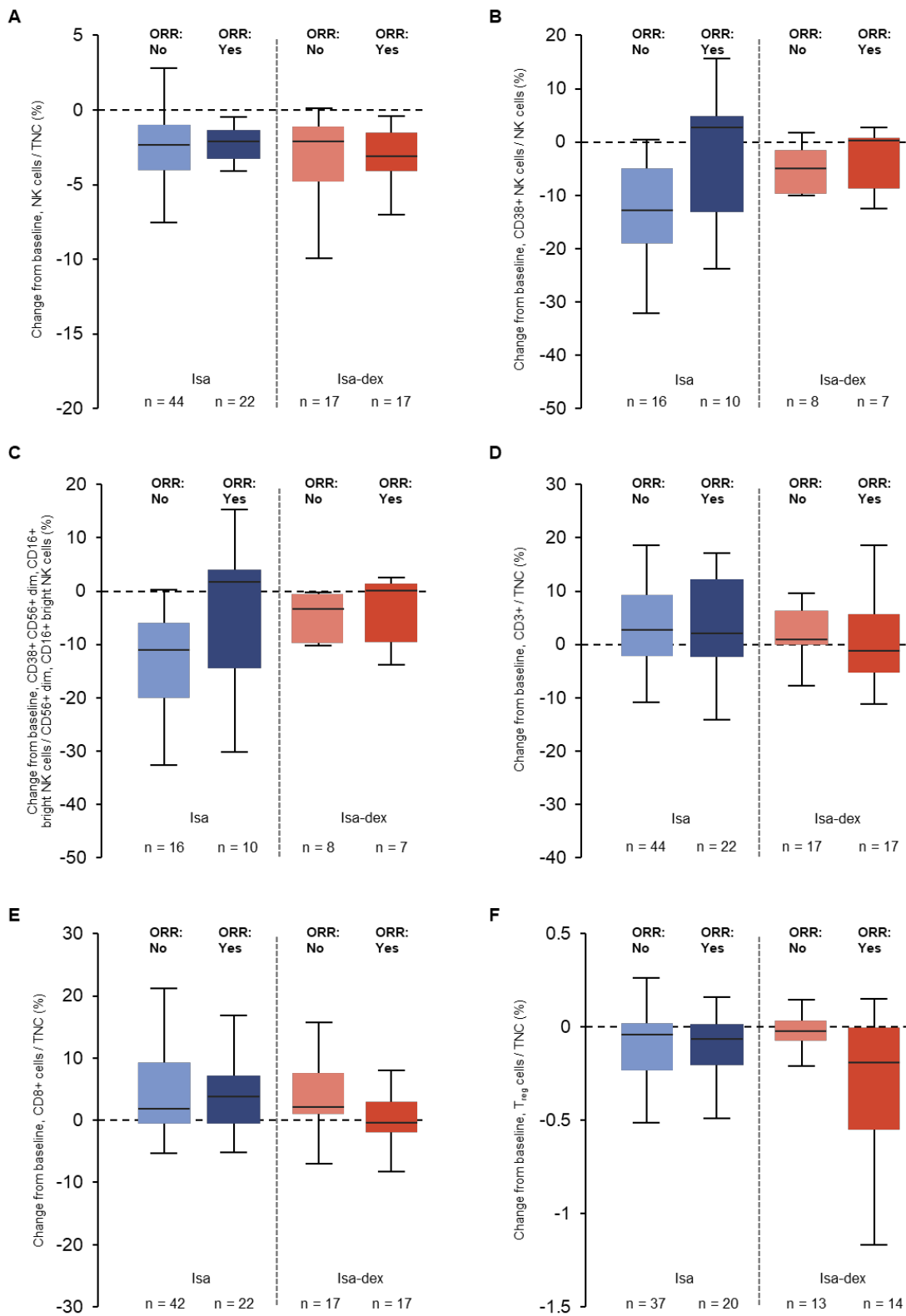
TEAE indicates treatment-emergent adverse event.

Supplemental Figure 1. Swimmer plot of time on treatment in responders (partial response or better).



dex indicates dexamethasone; Isa, isatuximab; MR, minimal response; NE, not estimable; PR, partial response; PD, progressive disease; PDU, unconfirmed progressive disease; SD, stable disease; and VGPR, very good partial response.

Supplemental Figure 2. Immunophenotyping data showing percentage change in cell types from cycle 1 day 1 (baseline) to cycle 3 day 1 with Isa vs Isa-dex based on overall response status.



dex indicates dexamethasone; Isa, isatuximab; NK, natural killer; ORR, overall response rate; and T_{reg}, regulatory T cell; TNC, total nucleated cells