

## Supplementary Online Content

Javle M, Shacham-Shmueli E, Xiao L, et al. Olaparib monotherapy for previously treated pancreatic cancer with DNA damage repair genetic alterations other than germline *BRCA* variants: findings from 2 phase 2 nonrandomized clinical trials. *JAMA Oncol*. Published online March 4, 2021. doi:10.1001/jamaoncol.2021.0006

**eFigure 1.** Kaplan Meier Survival Curve for PFS Based on DDR-GA

**eFigure 2.** Kaplan Meier Survival Curve for PFS Based on Platinum Sensitivity

**eTable 1A.** Patient Demographics

**eTable 1B.** Gene List

**eTable 2A.** Distribution of Cases at Sheba Medical Center and MD Anderson Cancer Center

**eTable 2B.** Univariate Cox Model to Evaluate Risk Effect of DDR-GA vs ATM loss, FH or PH on PFS

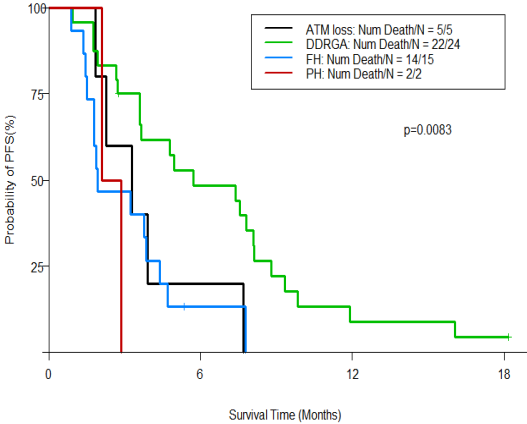
**eTable 3A.** Log Rank Test to Compare OS Between Subgroups of Patients

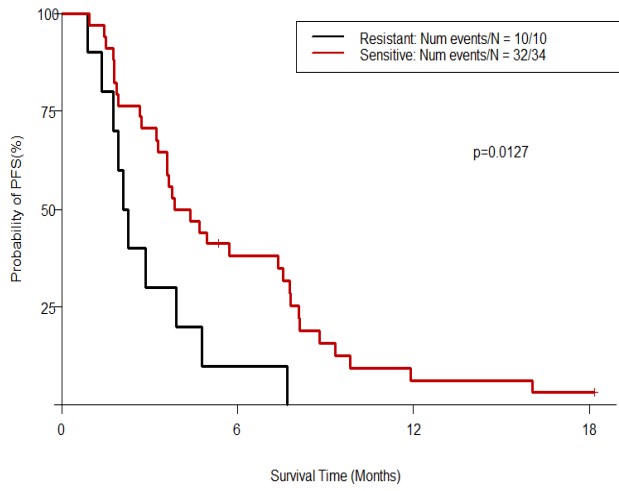
**eTable 3B.** Univariate Cox Model to Evaluate Risk Effect of DDR-GA vs ATM loss, HF or PH on PFS

**eTable 4.** Summary of Adverse Events and Grade

This supplementary material has been provided by the authors to give readers additional information about their work.

**eFigure 1.** Kaplan Meier Survival Curve for PFS Based on DDR-GA





**eFigure 2.** Kaplan Meier Survival Curve for PFS Based on Platinum Sensitivity

**eTable 1A. Patient Demographics**

Characteristic	MDACC (N=22)	Sheba (N=24)	Fisher's exact test p value
	n (%)	n (%)	
<b>Gender</b>			
M	10 (45.5%)	10 (41.7%)	1
F	12 (54.5%)	14 (58.3%)	
<b>ECOG PS</b>			
0	8 (36.4%)	18 (75%)	0.016
1	14 (63.6%)	6 (25%)	
<b>Site of primary in pancreas</b>			
Head	9 (40.9%)	13 (54.2%)	0.39
Body	7 (31.8%)	6 (25%)	0.75
Tail	7 (31.8%)	6 (25%)	0.75
Overlapping	5 (22.7%)	1 (4.2%)	0.09
<b>Sites of metastases</b>			
Liver	13 (59.1%)	15 (62.5%)	1
Peritoneum	15 (68.2%)	8 (33.3%)	0.038
Lung	6 (27.3%)	6 (25%)	1
Others	5 (22.7%)	5 (20.8%)	1
<b>Prior therapy type</b>			
Gem/nab paclitaxel	9 (40.9%)	4 (16.7%)	0.1
Folfirinox	15 (68.1%)	19 (79.2%)	0.51
Gem/cisplatin	2 (9.1%)	3 (12.5%)	1
FOLFIRI	5 (22.7%)	2 (8.3%)	0.23
FOLFOX	2 (9.1%)	1 (4.2%)	0.6
Gemcitabine (single agent)	4 (18.2%)	5 (20.8%)	1
Others:	8 (36.4%)	4 (16.7%)	0.18
<b>Wilcoxon rank sum test p value</b>			
	Median (range)	Median (range)	
Age	62 (46 - 89)	68 (35-86)	0.19
Baseline CA 19-9	109.2 (<1->10000)	351.35 (0.8, 16582)	0.89
Prior treatment lines	2 (1-5)	2 (1-4)	0.1

**eTable 1B.** Gene List

Subjects	Gene and Location	Somatic vs germline
1	ATM L1042fs*2, S2812fs*3 ARID1A L1922fs*1	Somatic
2	BRCA2 K3326X ATM K2756X	Somatic
3	ATM R3008C, R3008H	Somatic
4	ATM R23*	Germline
5	ATM G2695D	Somatic
6	PALB2 Tyr1183*	Germline
7	PALB2 P924R	Germline
8	ATM Q2762*	Somatic
9	ATM Arg1875	Germline
10	RAD 51C	Germline
11	ATM Arg447	Germline
12	ATM A1299fs	Somatic
13	ARID1A D1850fs*4	Somatic
14	ATM c4776+1G>T	Germline
15	ATM L2307F	Somatic
16	ATM c.2248delCT	Germline
17	FANCB D850E	Somatic
18	PTEN T277K	Somatic
19	ATM D1853N	Somatic
20	ATM C.2573_2574delInsA	Germline
21	FANCD2 1360FS*8	Somatic
22	ARID1A N2131S	Somatic
23	CCNE amplification	Somatic
24	PTEN T277K	Somatic

**eTable 2A.** Distribution of Cases at Sheba Medical Center and MD Anderson Cancer Center

	Sheba Medical Center	MD Anderson
Genetic Alteration	9	15
Family History only	10	7
ATM loss	5	0

**eTable 2B.** Univariate Cox Model to Evaluate Risk Effect of DDR-GA vs ATM loss, FH or PH on PFS

	HR	95% CI of HR		P value
DDR GA	1	1	1	
ATM loss	2.582	0.917	7.272	0.0726
FH	3.229	1.502	6.944	0.0027
PH	4.602	0.979	21.627	0.0532

**eTable 3A.** Log Rank Test to Compare OS Between Subgroups of Patients

Status	N	Event	Median OS (95%CI)(M)	1-y OS Rate (95%CI)	P-value
All patients	46	27	9.86 ( 7.56 , 16.06 )	0.43 ( 0.3 , 0.63 )	
Platin-naïve	2	0	NA ( NA , NA )	1 ( 1 , 1 )	0.0416
Platin-resistant	10	8	5.39 ( 3.78 , NA )	0.25 ( 0.08 , 0.8 )	0.0302
Platin-sensitive	34	19	10.48 ( 9.69 , NA )	0.47 ( 0.31 , 0.71 )	
DDR-GA	24	13	10.48 ( 8.8 , NA )	0.48 ( 0.3 , 0.77 )	0.2761
FH/PH/ATMloss	22	14	9.69 ( 7.52 , NA )	0.38 ( 0.2 , 0.7 )	

[Platin- oxaliplatin/ cisplatin; FH-family history, PH- personal history]



**eTable 3B.** Univariate Cox Model to Evaluate Risk Effect of DDR-GA vs ATM loss, HF or PH on PFS

		HR	95% CI of HR		p value
FXGA	DDR GA	1	1	1	
	ATM LOSS	0.977	0.277	3.448	0.971
	FH	1.528	0.65	3.591	0.3309
	PH	14.058	2.423	81.576	0.0032

**eTable 4.** Summary of Adverse Events and Grade

Toxicity/Grade	1	2	3	4	5
Anemia	5	6	5	0	0
Anorexia	11	0	0	0	0
Constipation	8	1	0	0	0
Dysgeusia	7	0	0	0	0
Fatigue	17	5	1	0	0
Gastritis	0	1	0	0	0
Gastroesophageal Reflux Disease	1	0	0	0	0
GGT increased	0	1	1	0	0
Hypomagnesemia	2	0	0	0	0
Mucositis Oral	5	0	0	0	0
Nausea	18	4	0	0	0
Neutrophil Count decreased	0	3	0	0	0
Platelet Count decreased	3	1	0	0	0
Proteinuria	1	0	0	0	0
Pruritus	2	0	0	0	0
Thrombotic Thrombocytopenic Purpura	1	0	0	0	0
Vomiting	9	0	1	0	0
White Blood Cell decreased	6	3	0	0	0