

**S4 Dataset. Source and biological repeats from figure 3D.**

Autoradiogram of *primer extension* RdRP assay with **MeV L H589Y** after fractionation through Urea-PAGE

template: 3' UGGUCUUUUUUUGUUUC

primer: 5' ACCA +<sup>32P</sup>G+A

25+16+4nt RNA markers  
no enzyme  
no primer

**repeat #4**

ERDRP-0519 (μM)

10  
1  
0.1  
0.01  
vehicle

25+16+5nt RNA markers

top  
gel  
wells

25 nt

16 nt

← primer extension

5 nt

unincorporated <sup>32P</sup>GTP

**repeat #3**

ERDRP-0519 (μM)

no primer  
10  
1  
0.1  
0.01  
vehicle

25+16+5nt RNA markers

**fig 3D insert**



**repeat #2**

ERDRP-0519 (μM)

no enzyme  
100  
10  
1  
0.1  
vehicle

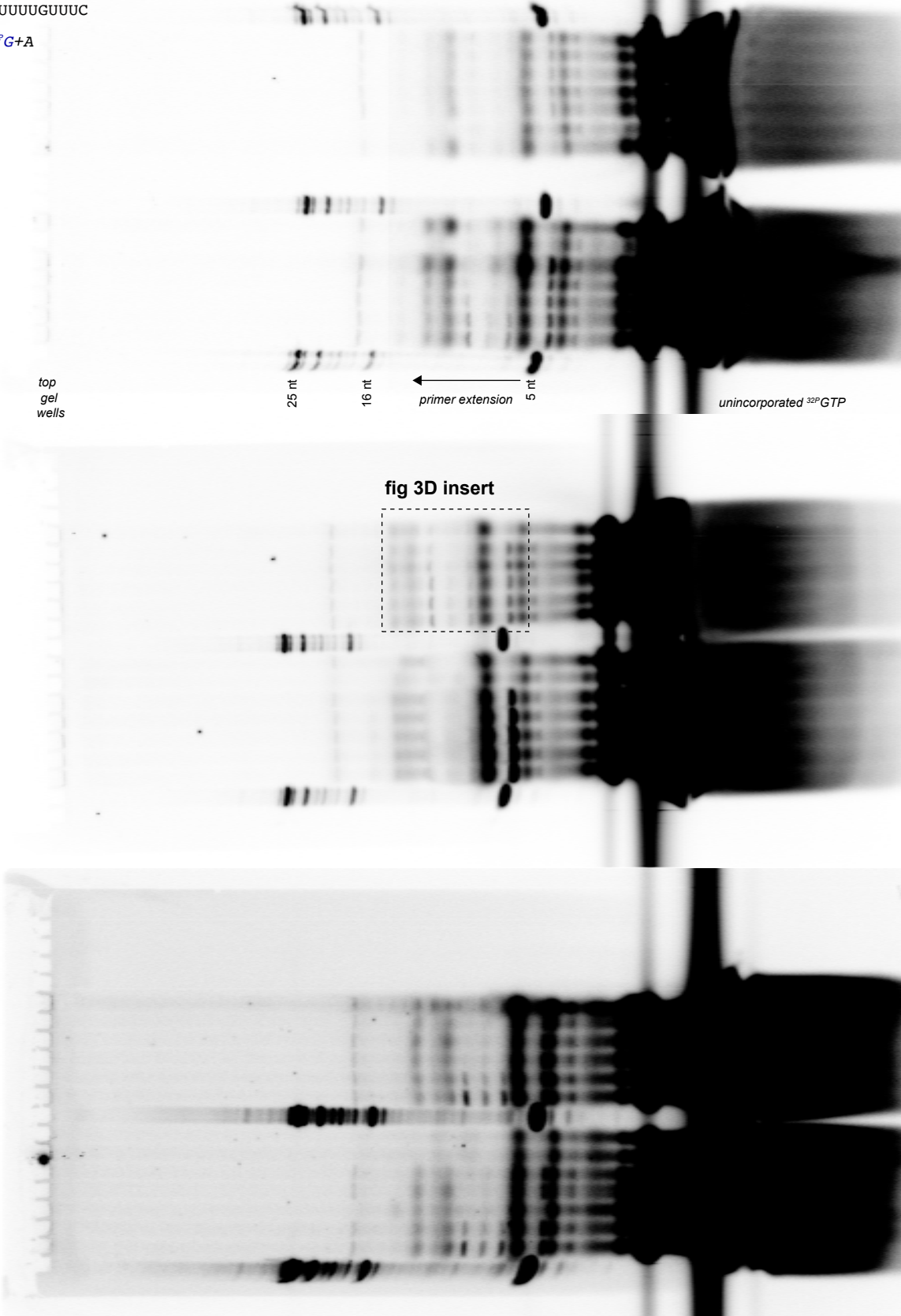
25+16+5nt RNA markers

**repeat #1**

ERDRP-0519 (μM)

no primer  
no enzyme  
100  
10  
1  
0.1  
vehicle

25+16+4nt RNA markers





**S4 Dataset. Source and biological repeats from figure 3D.**

Autoradiogram of *primer extension* RdRP assay with **MeV L T776A** after fractionation through Urea-PAGE

template: 3' UGGUCUUUUUUUGUUUC

primer: 5' <sub>p</sub> ACCA +<sup>32P</sup>G+A *top gel wells*

*primer extension*

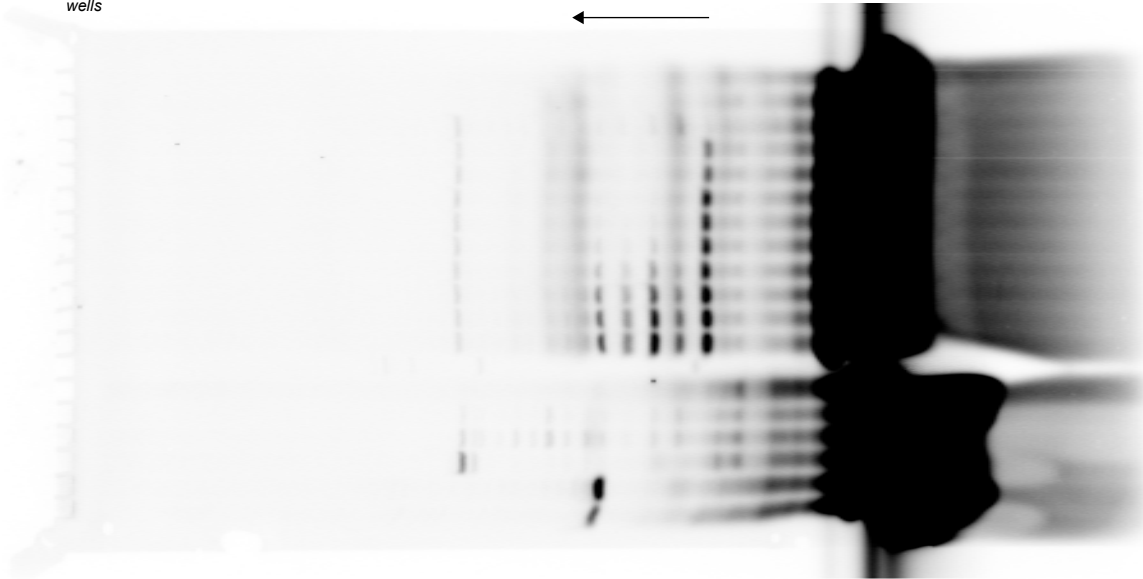
*unincorporated <sup>32P</sup>GTP*



**repeat #4**  
ERDRP-0519  
( $\mu$ M)

no enzyme  
no template  
no primer

300  
100  
30  
10  
3  
1  
0.4  
0.1  
vehicle



# S4 Dataset. Source and biological repeats from figure 3D.

Autoradiogram of primer extension RdRP assay with MeV L WT after fractionation through Urea-PAGE

template: 3' UGGUCUUUUUUUGUUUC

primer: 5' ACCA +<sup>32P</sup>G+A

repeat #4

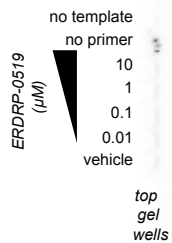


fig 3D insert



primer extension

unincorporated <sup>32P</sup>GTP

repeat #3



repeat #2



repeat #1

