

Inhibition of ERAD synergizes with FTS to eradicate pancreatic cancer cells

Rong Du^{1,2,3}, Delaney K. Sullivan⁴, Nancy G. Azizian^{1,2}, Yuanhui Liu^{1,2}, Yulin Li^{1,2*}

¹Center for Immunotherapy Research, Houston Methodist Research Institute, Houston, TX 77030, USA; ²Department of Medicine, Weill Cornell Medical College, New York, NY 10065, USA; ³Department of Neurosurgery, Xiangya Hospital, Central South University, Changsha, Hunan 410008, China. ⁴UCLA-Caltech Medical Scientist Training Program, David Geffen School of Medicine, University of California, Los Angeles, Los Angeles, CA 90095, USA

***Corresponding author:** Yulin Li, Houston Methodist Research Institute. 6670 Bertner Avenue. Houston, TX 77030, USA. Phone: 713-441-7350; Fax: 713-441-7438; Email: yli@houstonmethodist.org

List of supplementary figures

Supplementary Figure S1. Combination indexes show synergistic effect between EerI and FTS

- (A) Berenbaum combination index (CI). CI value of lower than 1 indicates synergy.
- (B) Cell viability tests presented as mean \pm SD. Data analysis and calculation of IC50 was performed using GraphPad Prism 8.
- (C) The CI values of FTS and EerI in 4292, PANC-1, and MIA PaCa-2 cells, indicating synergistic effect.

Supplementary Figure S2. Original images of the Western blot presented in Figure 3A and 3C

Supplementary Figure S3. Validation of *SYVNI* and *SELIL* CRISPR knockouts by PCR and Sanger sequencing

- (A) Map of *SYVNI* and *SELIL* and their respective sgRNAs. Half-arrows indicate the primer sets used to for PCR amplification. Primer sequences are listed in **Supplementary Table 5**.
- (B) PCR amplicons of wild type control and the knockouts using primer sets depicted in **S3A**.
- (C) Sanger sequencing of *SYVNI* exon3 PCR products. In *SYVNI* KO1, one allele shows 40nt deletion between the targeting sites of sg2 and sg3, and mutations/frameshift around sg3 targeting site in the other allele.
- (D) Sanger sequencing of *SELIL* 1F-3R PCR product from *SELIL* KO1 validating a 106 nucleotide deletion between the targeting sites of sg1 and sg3.

Supplementary Figure S4. Original images of the Western blot presented in Figure 4A and 4F

Supplementary Figure S1

A

$$CI = \frac{D_{FTS}}{IC50_{FTS}} + \frac{D_{EerI}}{IC50_{EerI}} = 1 \text{ for additivity}$$

>1 for antagonism
<1 for synergy

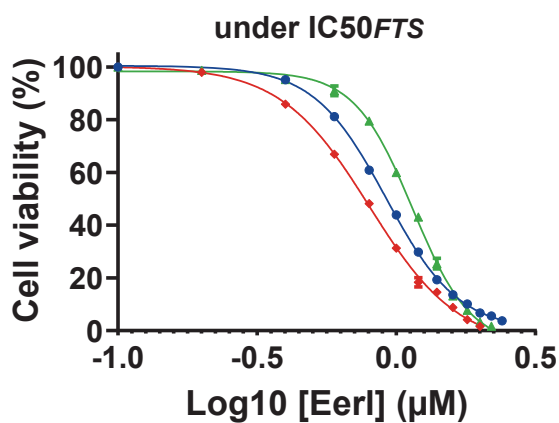
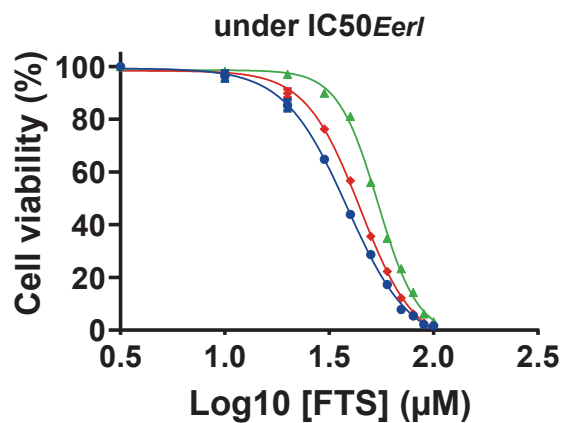
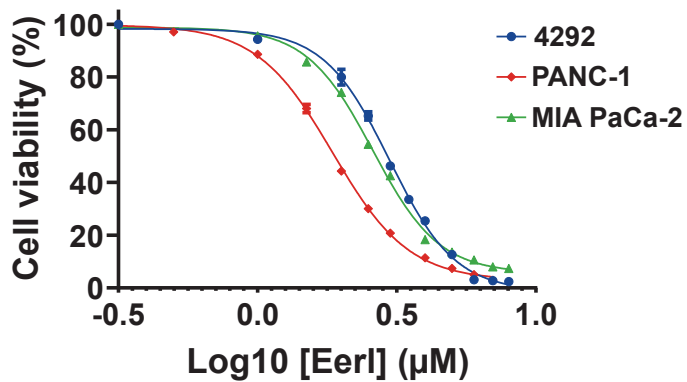
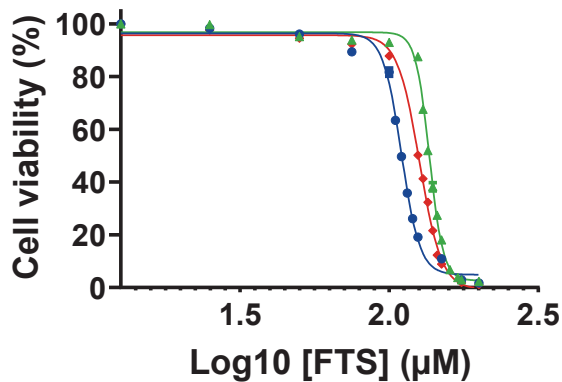
$IC50_{FTS}$ – IC50 of FTS alone

$IC50_{EerI}$ – IC50 of EerI alone

D_{FTS} – IC50 of FTS in the presence of $IC50_{EerI}$

D_{EerI} – IC50 of EerI in the presence of $IC50_{FTS}$

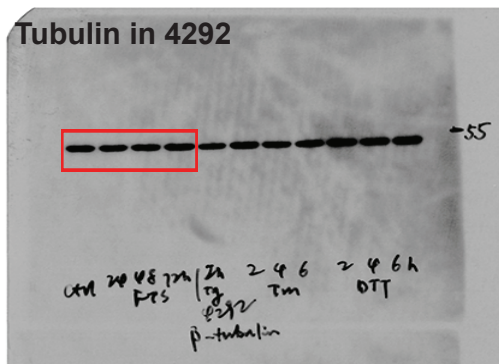
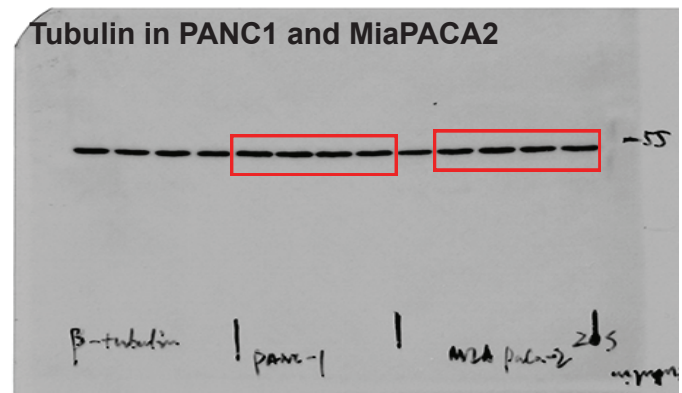
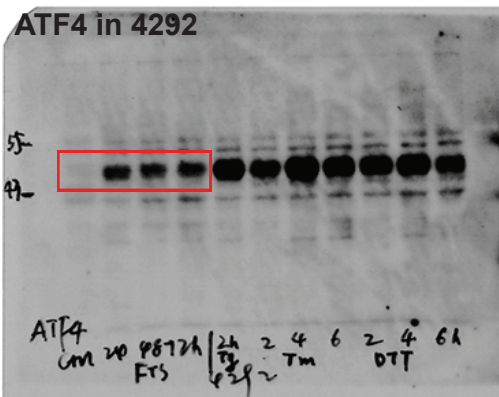
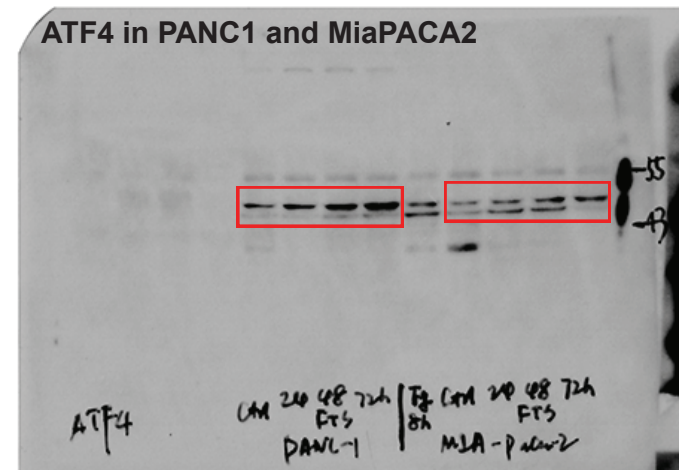
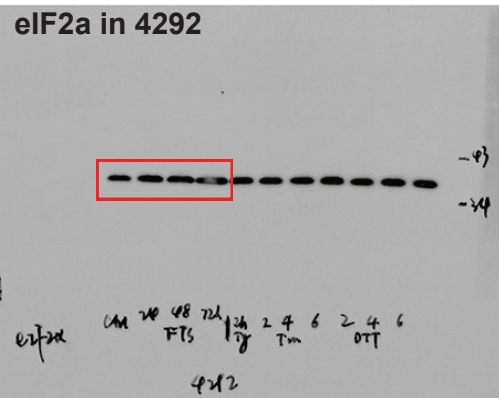
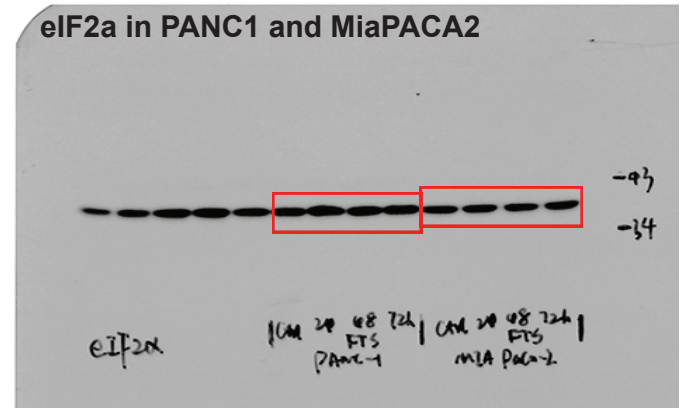
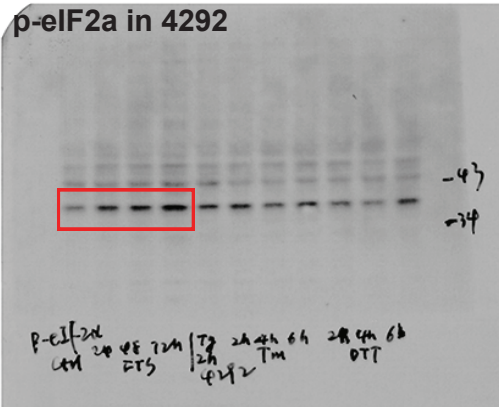
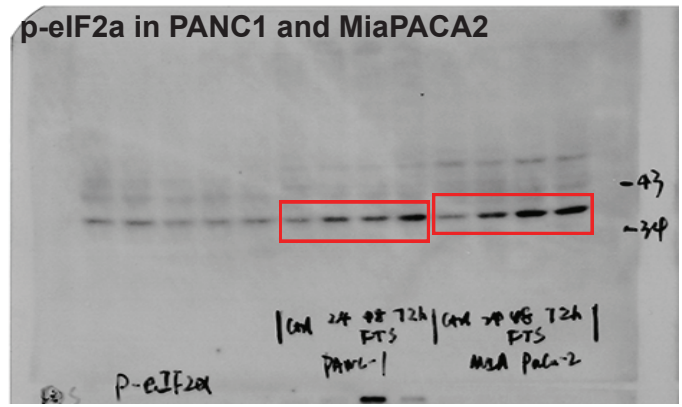
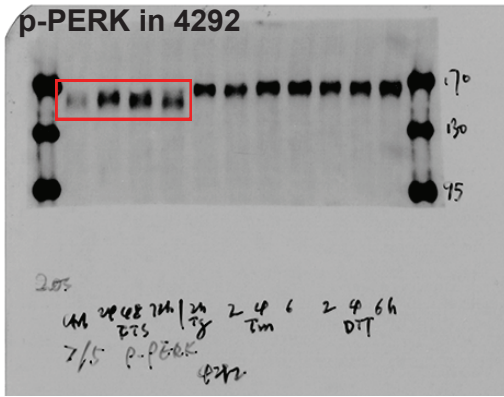
B



C

	$IC50_{FTS}$ (μM)	$IC50_{EerI}$ (μM)	D_{FTS} (μM)	D_{EerI} (μM)	CI
4292	110.0	2.982	38.56	0.920	0.659
PANC-1	126.5	1.863	44.55	0.802	0.783
MIA PaCa-2	136.5	2.595	54.15	1.146	0.838

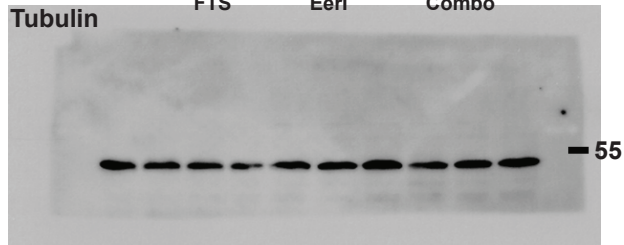
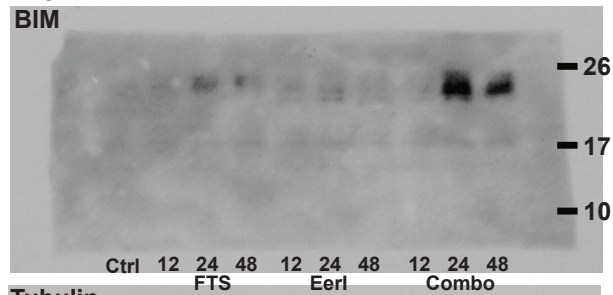
Supplementary Figure S2



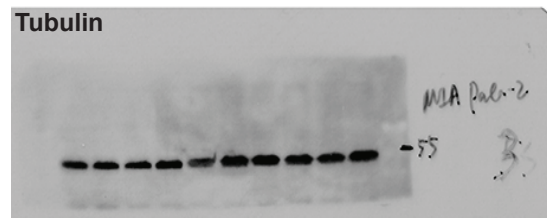
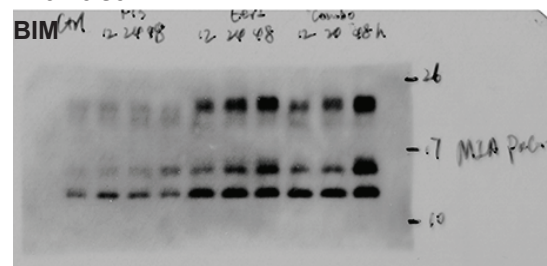
Supplementary Figure S2 (Continued)

Blots in Figure 3C

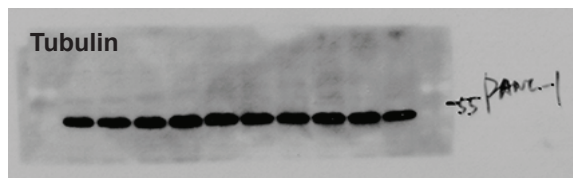
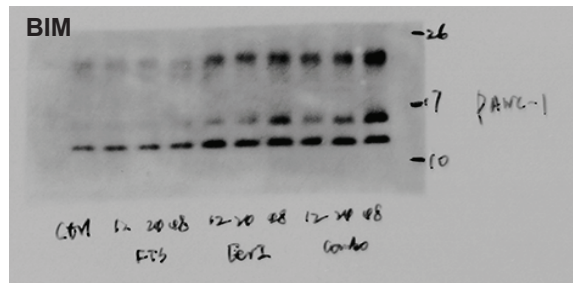
4292



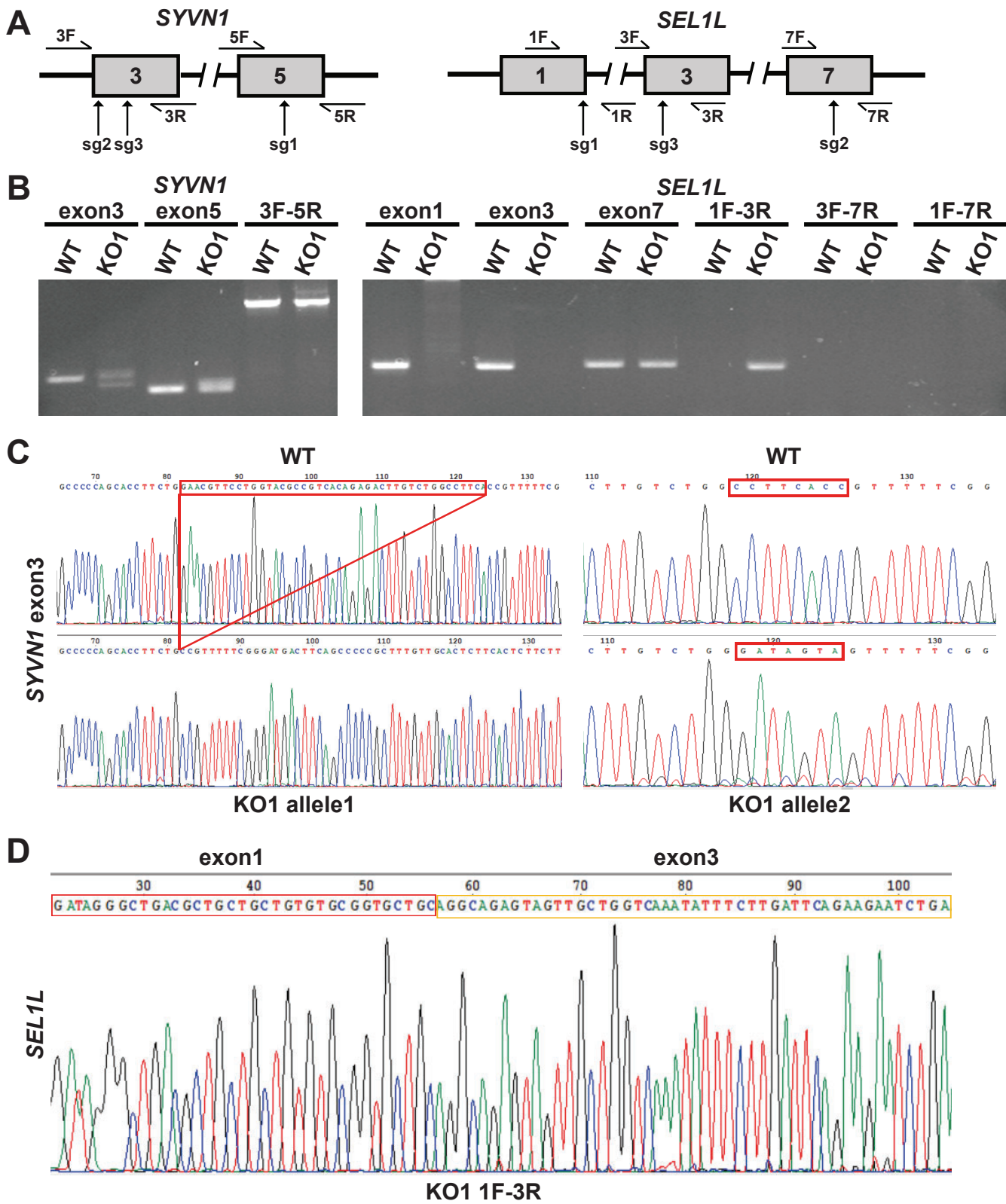
MiaPaca2



PANC-1

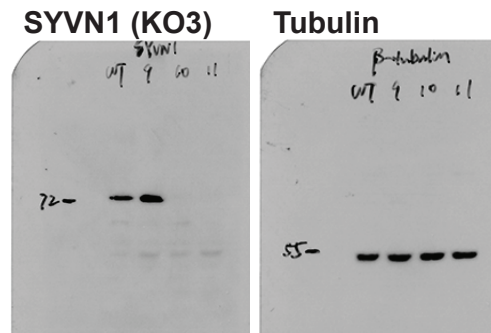
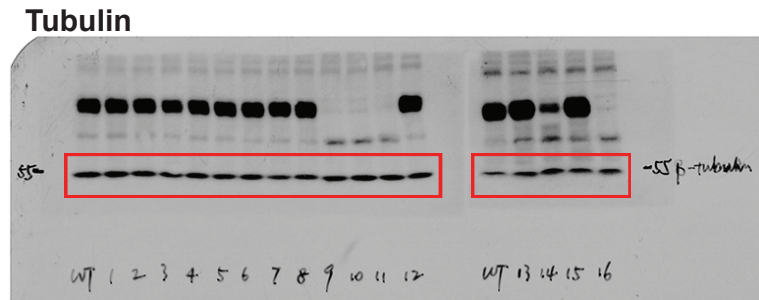
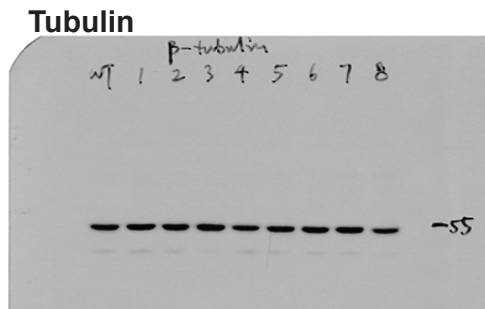
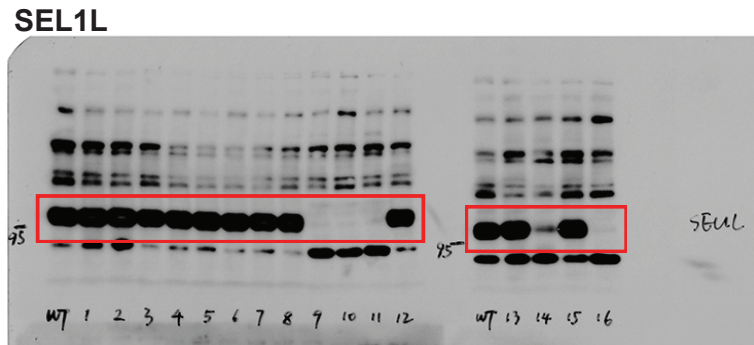
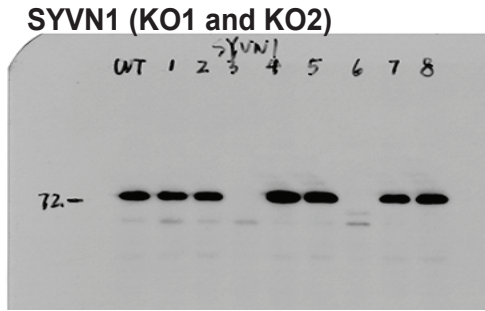


Supplementary Figure S3



Supplementary Figure S4

Blots in Figure 4A



Blots in Figure 4F

