



Two-Year Outcomes of Asymptomatic vs. Symptomatic Patients After Deferral of Revascularization Based on Fractional Flow Reserve

— Insights From the J-CONFIRM Registry —

Kazunori Horie, MD; Shoichi Kuramitsu, MD, PhD; Hitoshi Matsuo, MD, PhD;
Tomohiro Shinozaki, PhD; Hiroaki Takashima, MD, PhD; Yasutsugu Shiono, MD, PhD;
Hidenobu Terai, MD; Yuetsu Kikuta, MD; Takayuki Ishihara, MD; Tatsuya Saigusa, MD;
Tomohiro Sakamoto, MD, PhD; Taku Asano, MD, PhD; Kenichi Tsujita, MD, PhD;
Katsuhiko Masamura, MD, PhD; Tatsuki Doijiri, MD; Manabu Ogita, MD, PhD;
Tairo Kurita, MD, PhD; Akiko Matsuo, MD; Shinjo Sonoda, MD, PhD; Hiroyoshi Yokoi, MD;
Nobuhiro Tanaka, MD, PhD on behalf of the J-CONFIRM Investigators

Supplementary Material

Supplementary Appendix. List of Participating Centers and the Investigators

Aichi Medical University: Hiroaki Takashima

Chidoribashi Hospital: Fumitoshi Toyota, Yohei Sasaki

Chubu Rosai Hospital: Ken Harada

Fukuoka Sanno Hospital: Hiroyoshi Yokoi, Yasunori Yamamoto

Fukuyama Cardiovascular Hospital: Yuetsu Kikuta, Mika Hirabayashi

Gifu Heart Center: Hitoshi Matsuo, Jun Kikuchi

Japanese Red Cross Kyoto Daini Hospital: Hiroshi Fujita, Akiko Matsuo

Juntendo University Shizuoka Hospital: Satoru Suwa, Manabu Ogita

Juntendo University Urayasu Hospital: Ken Yokoyama, Hiroyuki Isogai

Kainan Hospital: Takashi Yamada, Noriyoshi Kanemura

Kanazawa Cardiovascular Hospital: Hidenobu Terai

Kansai Rosai Hospital Cardiovascular Center: Osamu Iida, Takayuki Ishihara

Kumamoto University: Kenichi Tsujita, Kenshi Yamanaga

Kokura Memorial Hospital: Shoichi Kuramitsu

Mie University Graduate School of Medicine: Tairo Kurita

Nakamura Hospital: Katsuhiko Masamura, Masanori Kanehachi

Narita Memorial Hospital: Toru Niwa

Nayoro City General Hospital: Masaru Yamaki

Saiseikai Fukuoka General Hospital: Nobuhiro Suematsu, Takeshi Serikawa, Masahiro Natsuaki

Saiseikai Kumamoto Hospital Cardiovascular Center: Tomohiro Sakamoto, Kazuhisa Kodama

Sendai Kosei Hospital: Kazunori Horie

Shinshu University: Tatsuya Saigusa

St Luke's International Hospital: Atsushi Mizuno, Taku Asano

Tajimi City Hospital: Daiki Kato

Tokyo Medical University: Nobuhiro Tanaka, Jun Yamashita

University of Occupational and Environmental Health Japan School of Medicine: Shinjo Sonoda,
Yoshitaka Muraoka

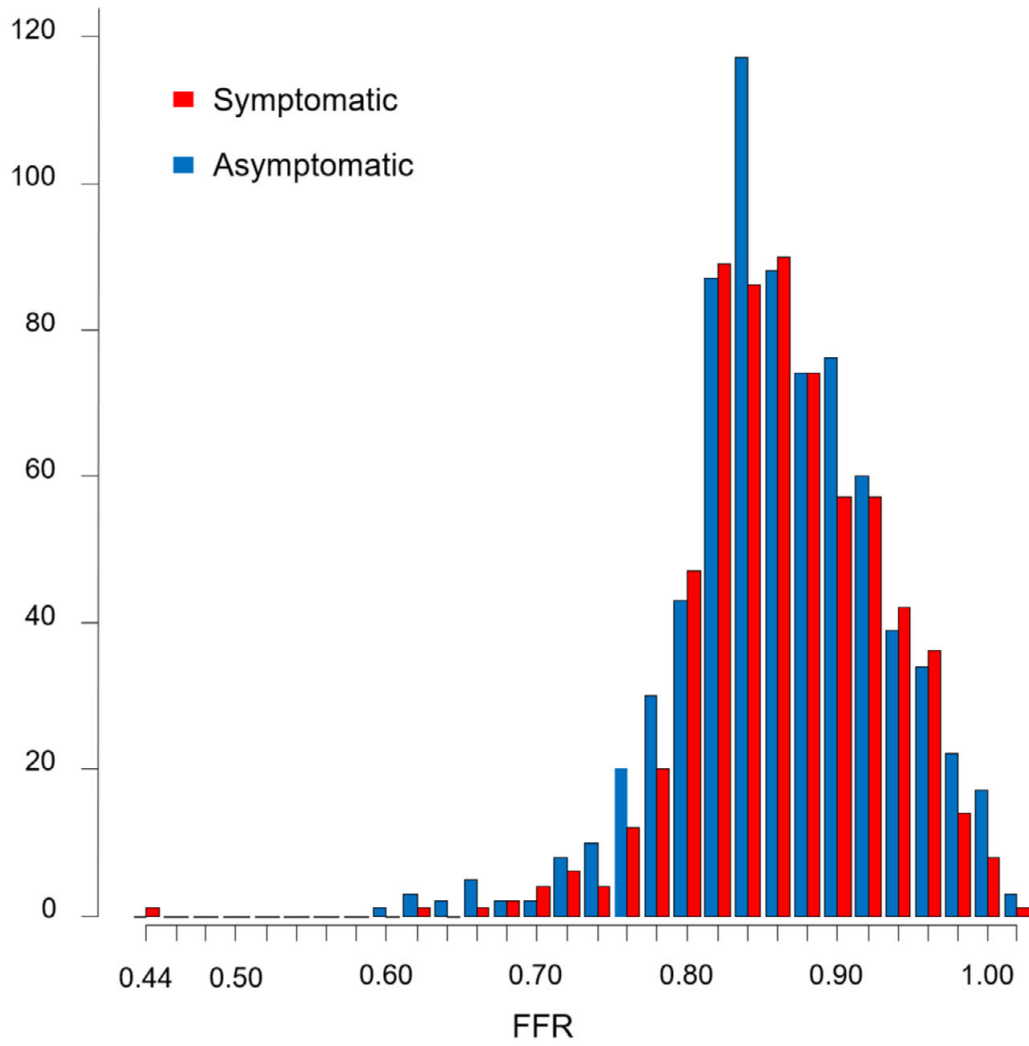
Wakayama Medical University: Takashi Akasaka, Yasutsugu Shiono

Yamato Seiwa Hospital: Tatsuki Doijiri

Supplementary Table. Medication During the Follow-up

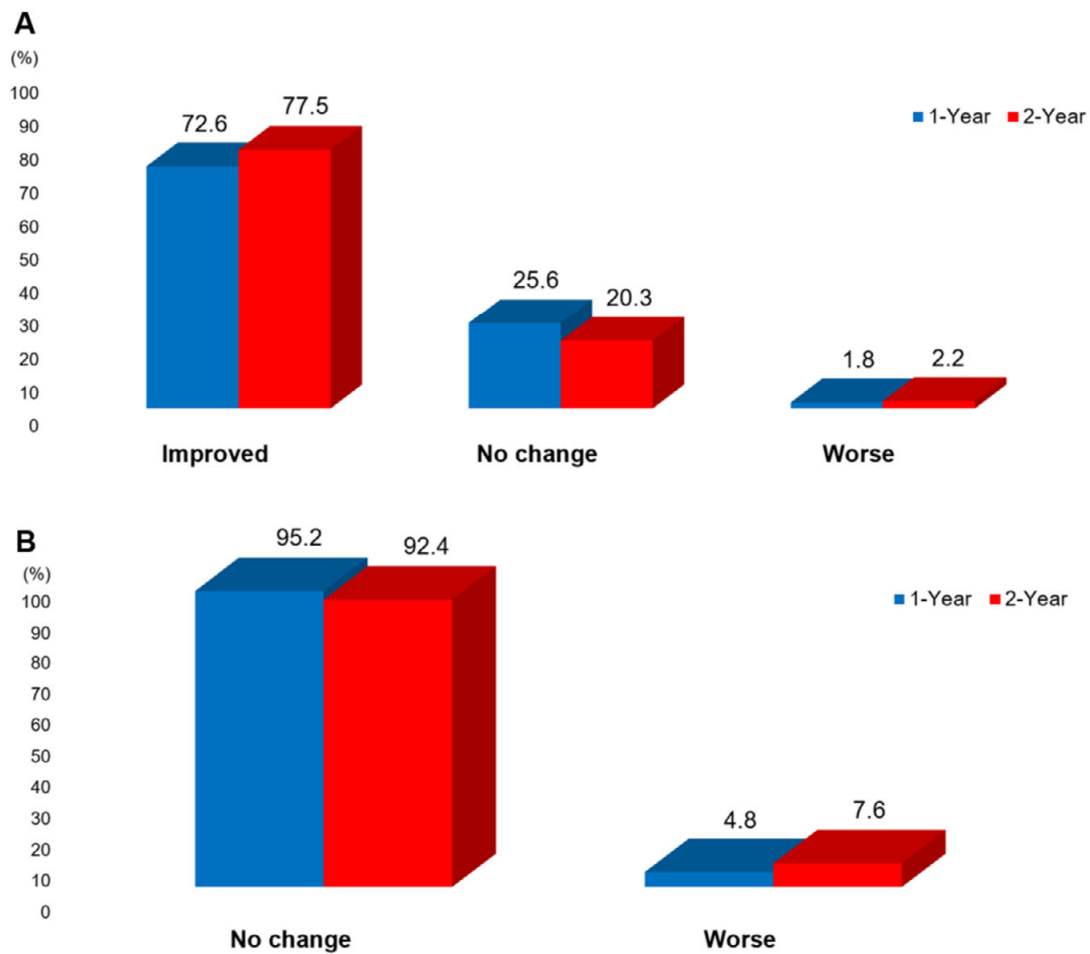
Variables	Symptomatic	Asymptomatic	P value
<i>1-Year Follow-up</i>			
Antiplatelet therapy	475 (83.9)	530 (83.7)	0.94
Aspirin	425 (75.1)	462 (73.0)	0.43
Thienopyridine	274 (48.4)	313 (49.4)	0.73
Antianginal drugs	441 (77.9)	467 (73.8)	0.11
Beta-blocker	179 (31.6)	235 (37.1)	0.052
Ca-channel blocker	314 (55.5)	312 (49.3)	0.04
Nitrate	135 (23.9)	77 (12.2)	<0.001
Statin	368 (65.0)	439 (69.4)	0.12
Oral hypoglycemia agent	158 (27.9)	157 (24.8)	0.24
Insulin	32 (5.7)	21 (3.3)	0.07
<i>2-Year Follow-up</i>			
Antiplatelet therapy	462 (82.8)	525 (84.3)	0.53
Aspirin	405 (72.6)	447 (71.7)	0.80
Thienopyridine	257 (46.1)	287 (46.1)	1.00
Antianginal drugs	434 (77.8)	464 (74.5)	0.20
Beta-blocker	182 (32.6)	234 (37.6)	0.08
Ca-channel blocker	302 (54.1)	315 (50.6)	0.24
Nitrate	137 (24.6)	82 (13.2)	<0.001
Statin	359 (64.3)	433 (69.5)	0.06
Oral hypoglycemia agent	156 (28.0)	160 (25.7)	0.39
Insulin	33 (5.9)	26 (4.2)	0.18

Categorical variables are expressed as number and percentage.



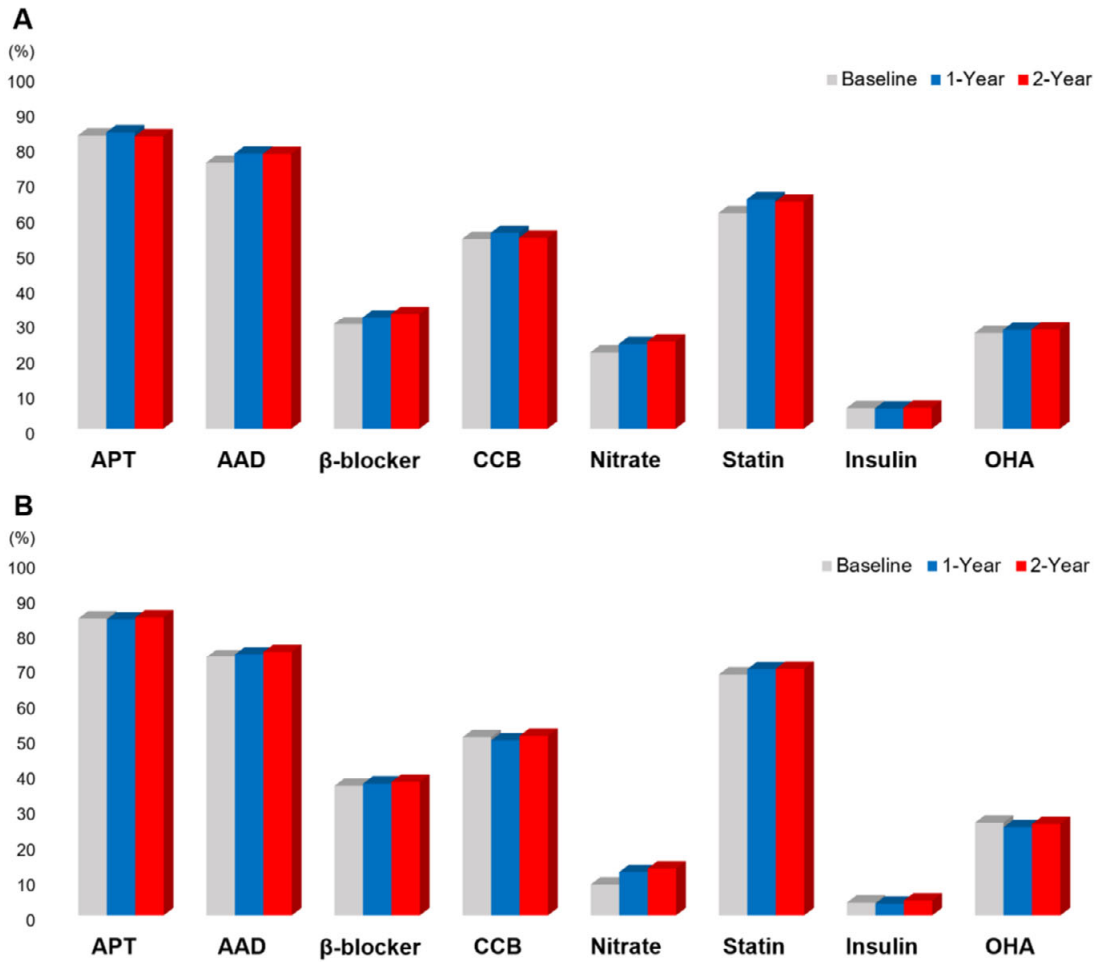
Supplementary Figure 1. Distribution of FFR

FFR indicates fractional flow reserve.



Supplementary Figure 2. Changes in Clinical Symptom Through 2 Years

(A) Symptomatic and (B) asymptomatic patients. Improved symptom is defined as an improvement in the Canadian Cardiovascular Society (CCS) classification from the baseline. Worse symptom is defined as a worsening of the CCS classification from the baseline.



Supplementary Figure 3. Medication During the Follow-up

(A) Symptomatic and (B) asymptomatic patients. AAD indicates antianginal drugs (defined as a composite of beta-blocker, calcium-channel blocker [CCB], or nitrate); APT, antiplatelet therapy; and OHA, oral hypoglycemia agent.