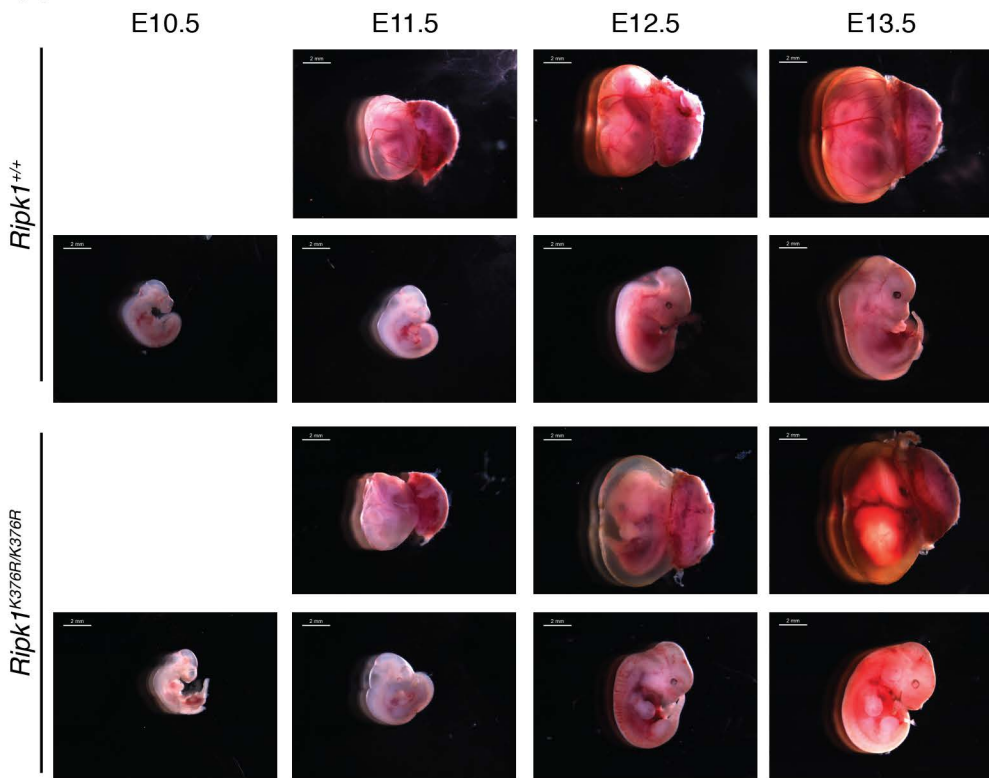
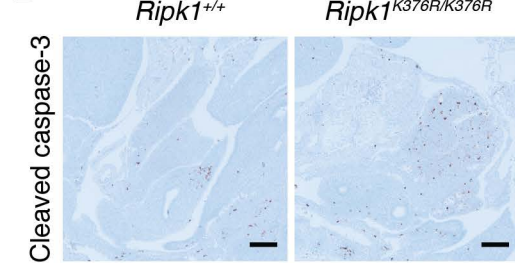


Supplementary Figure 1

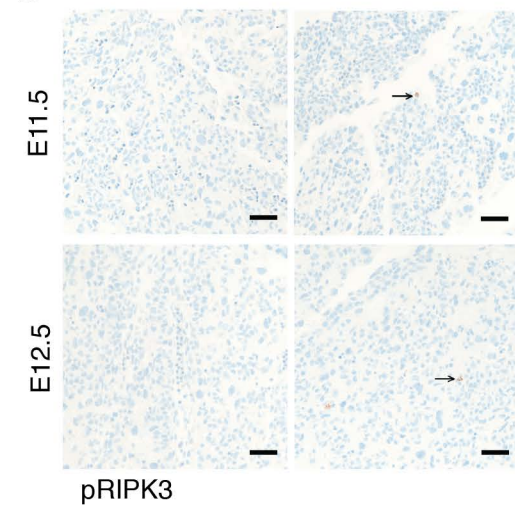
A



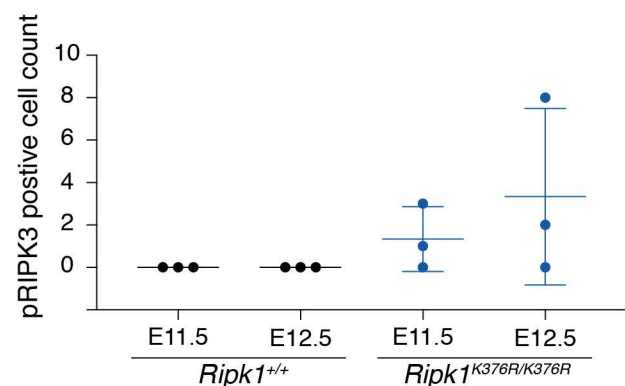
B



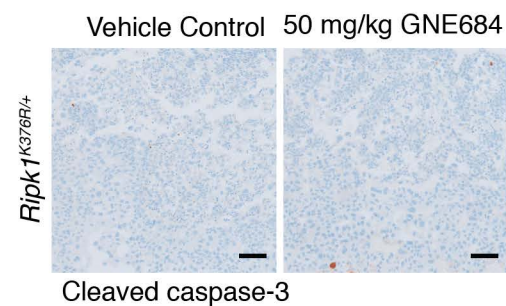
C



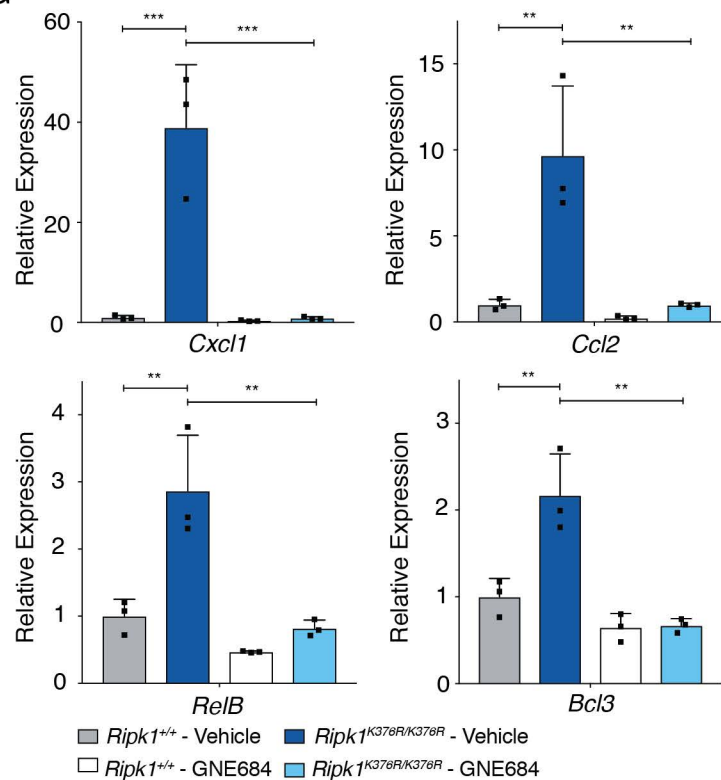
D



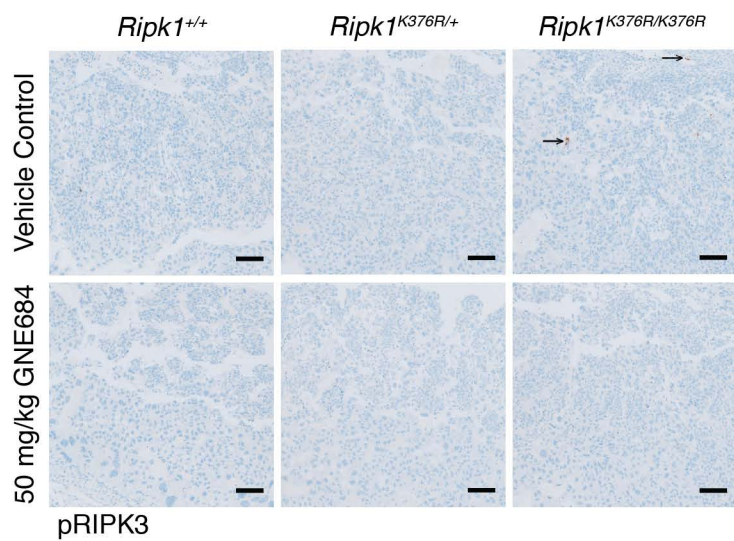
E



G

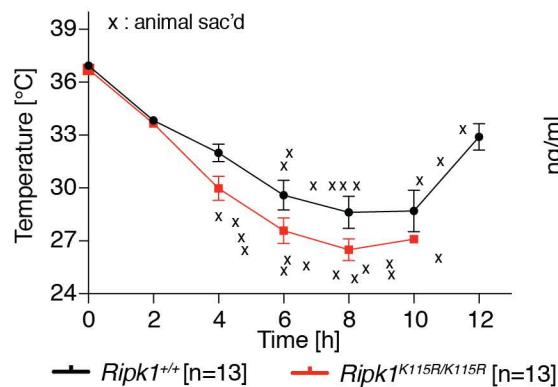


F

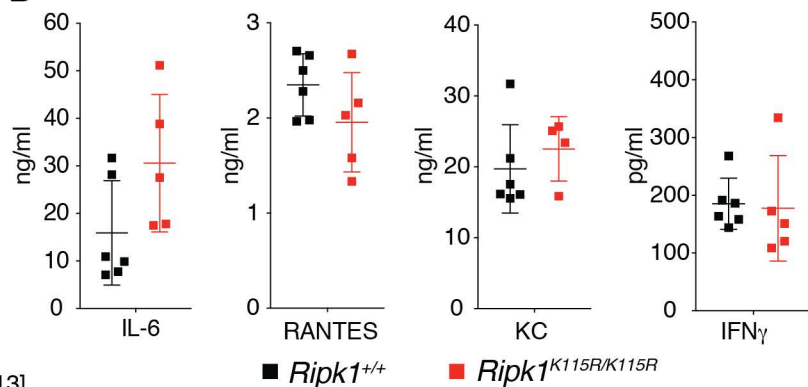


Supplementary Figure 2

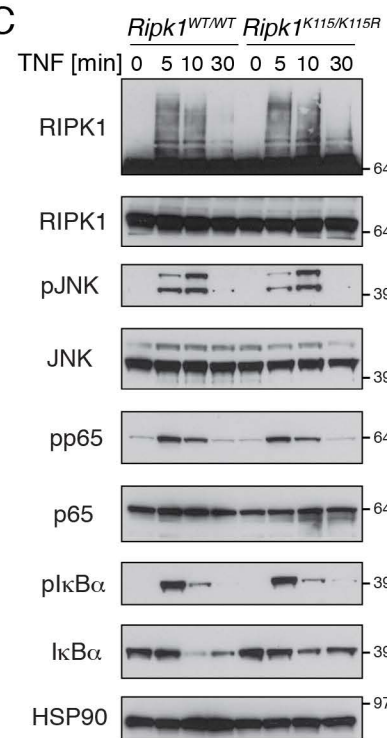
A



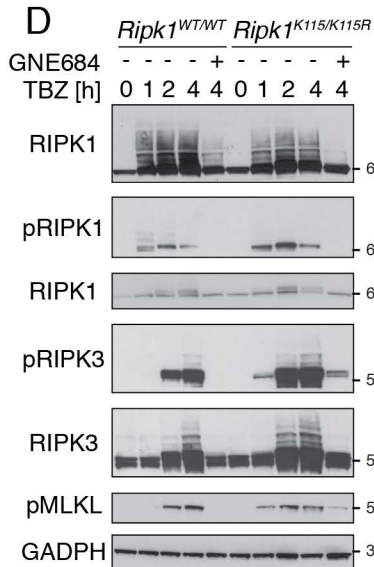
B



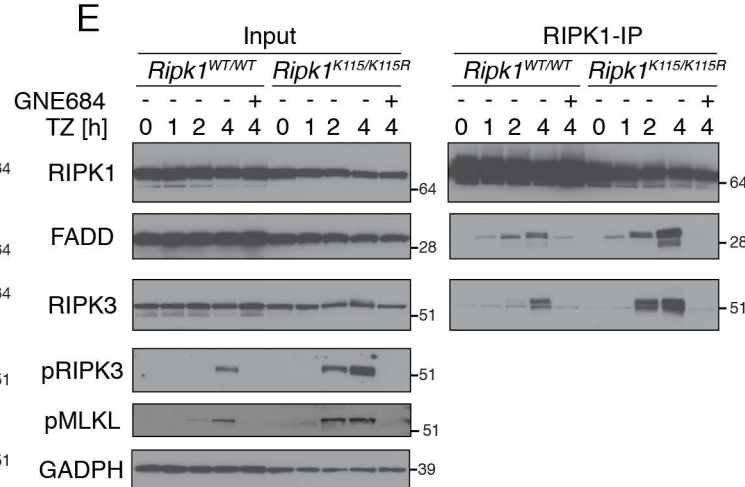
C



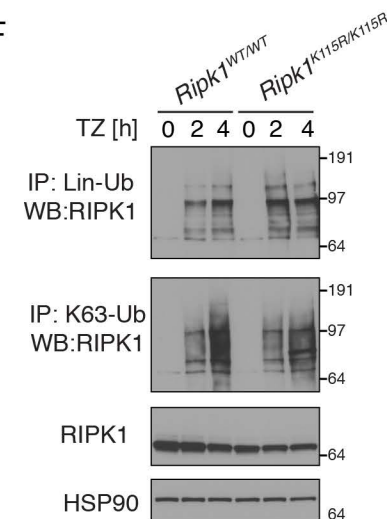
D



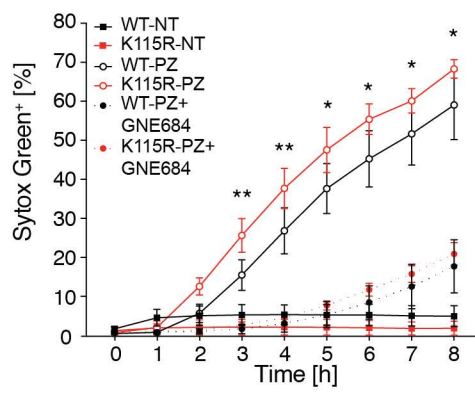
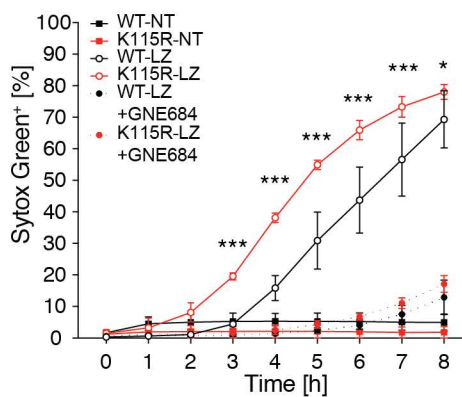
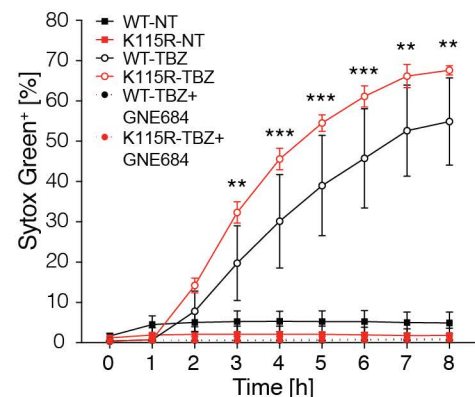
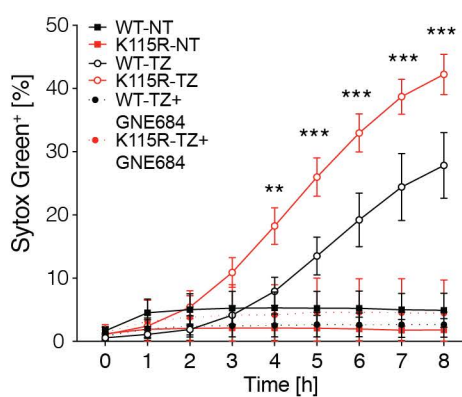
E



F

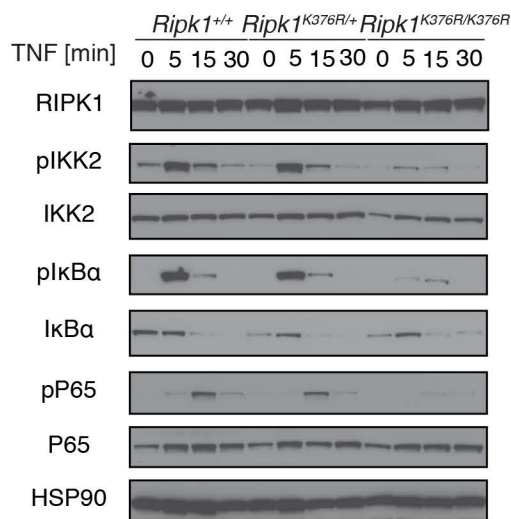


G

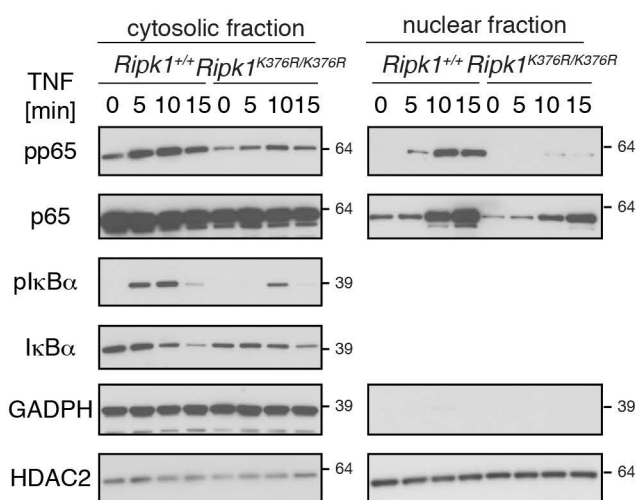


Supplementary Figure 3

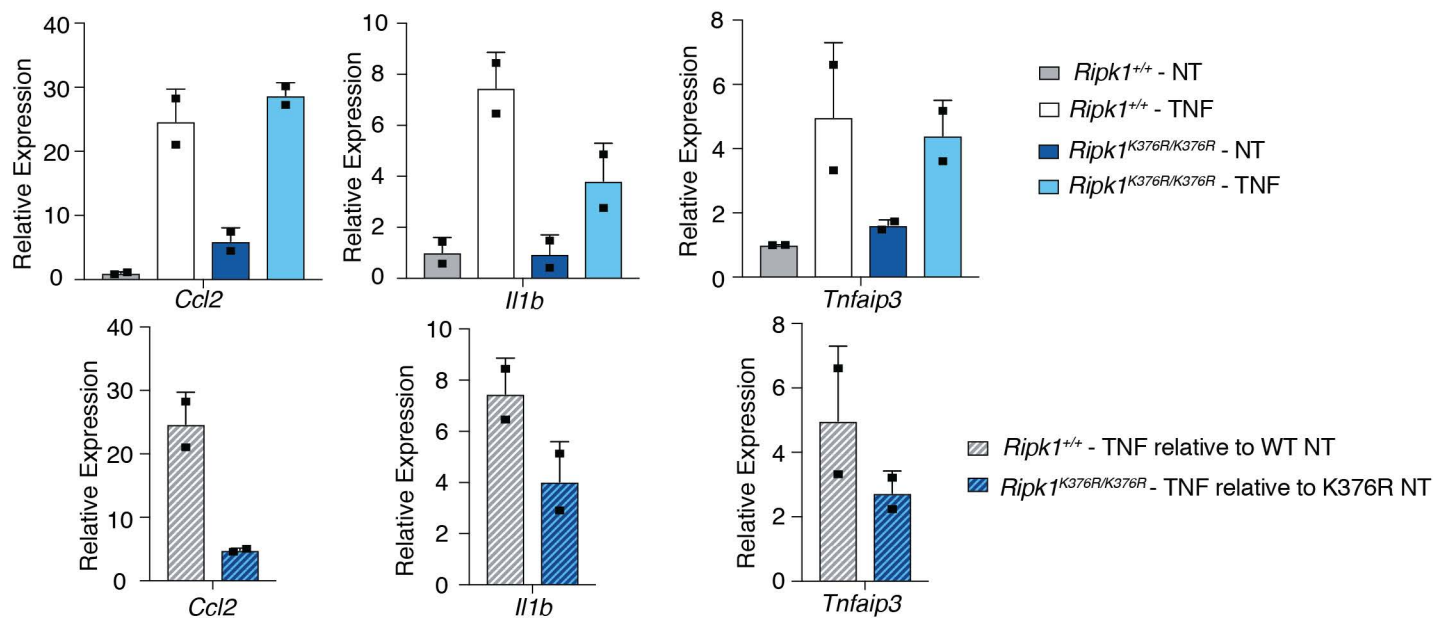
A



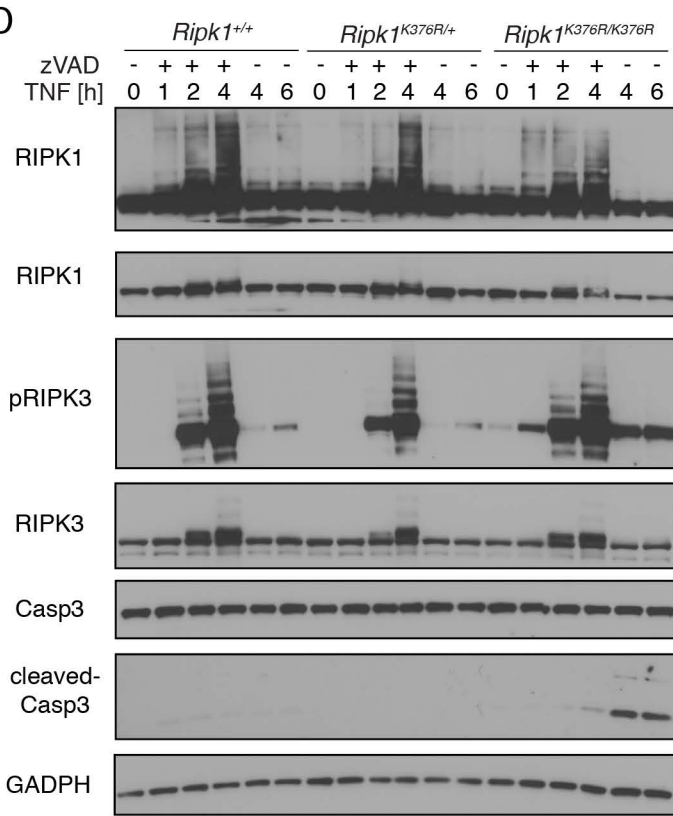
B



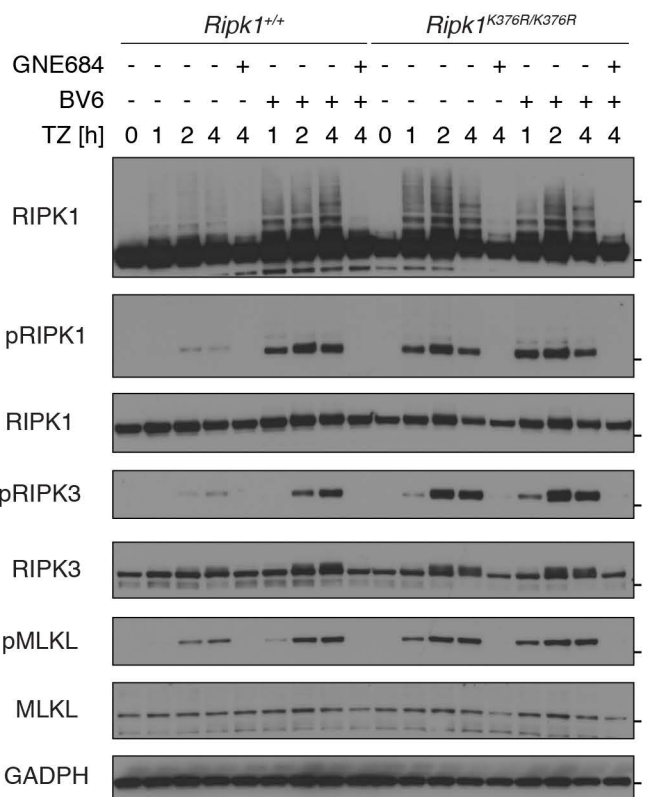
C



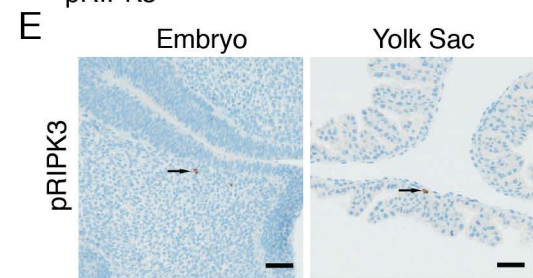
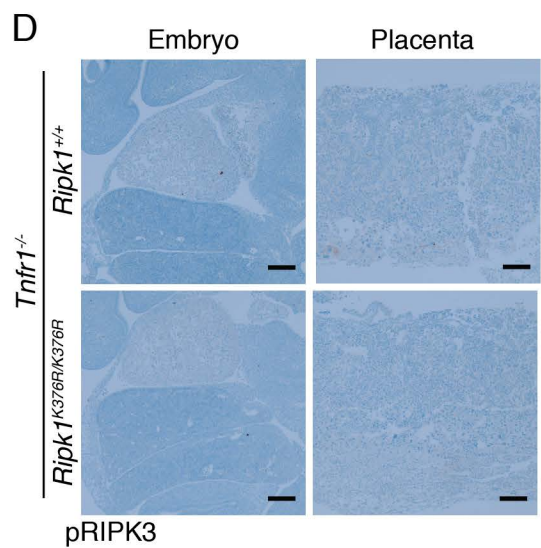
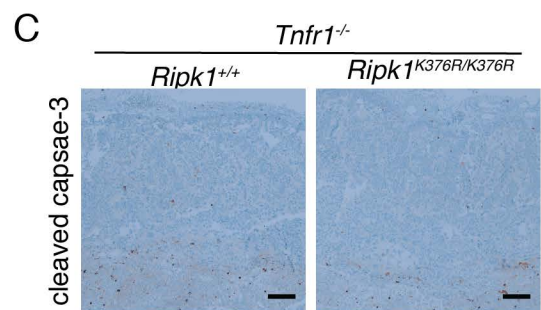
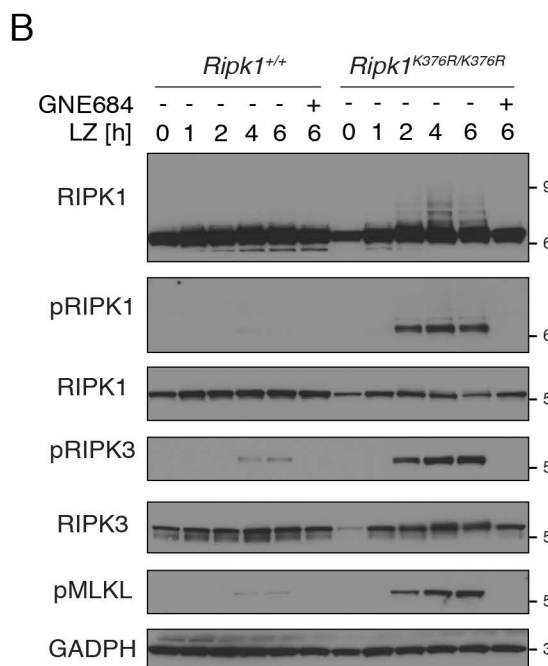
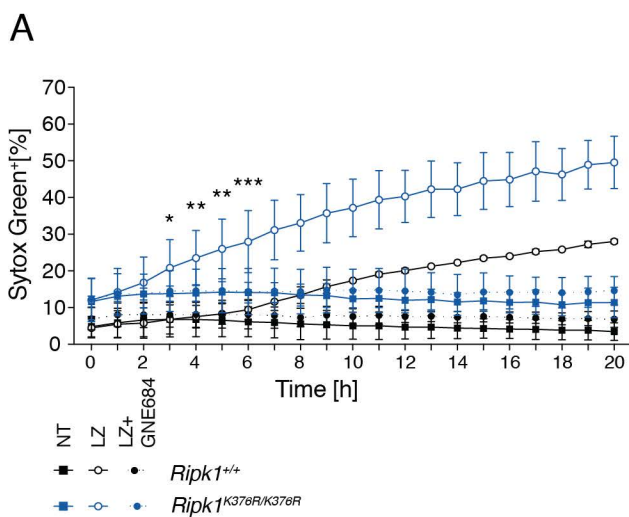
D



E



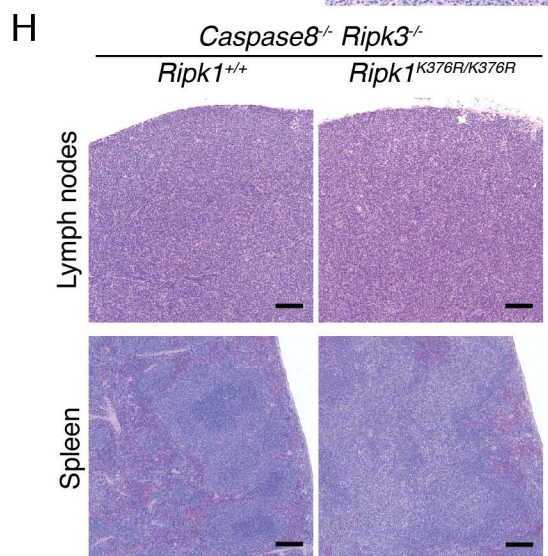
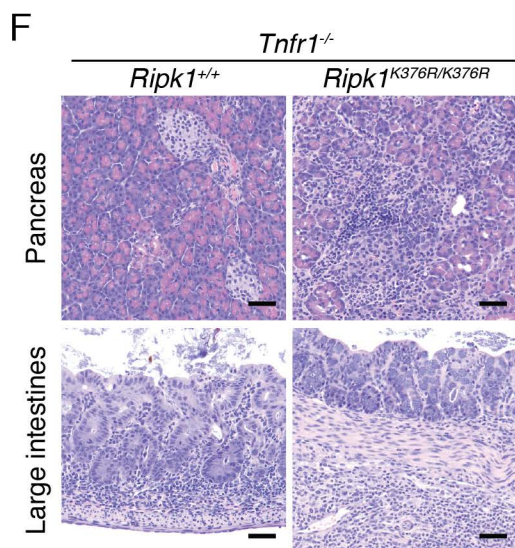
Supplementary Figure 4



G

	<i>Ripk1</i> ^{+/+}	various genotypes*	<i>Ripk1</i> ^{K376R/K376R}
<i>Casp8</i> ^{-/-}			
<i>Ripk3</i> ^{-/-}			
Adult	7	17	7

*: 9 *Ripk1*^{K376R/+} *Casp8*^{-/-} *Ripk3*^{-/-}
 5 *Ripk1*^{K376R/+} *Casp8*^{+/-} *Ripk3*^{-/-}
 3 *Ripk1*^{+/+} *Casp8*^{-/-} *Ripk3*^{-/-}

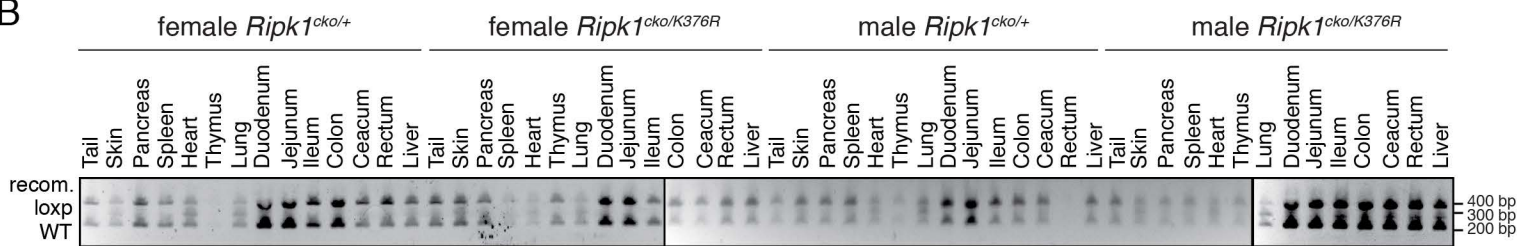


Supplementary Figure 5

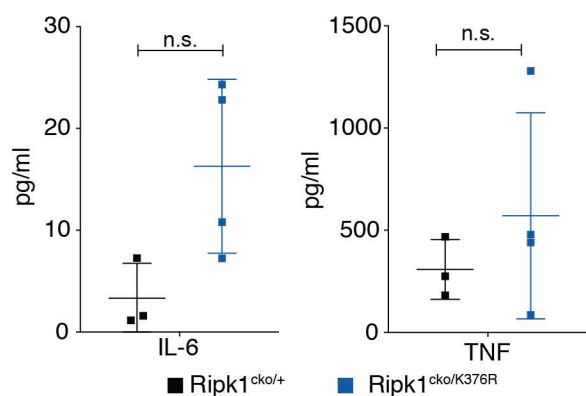
A



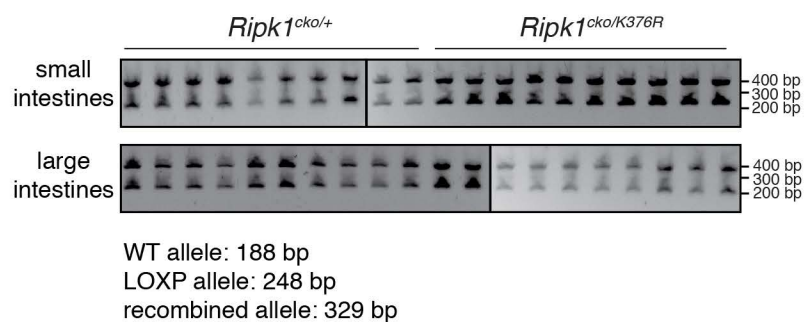
B



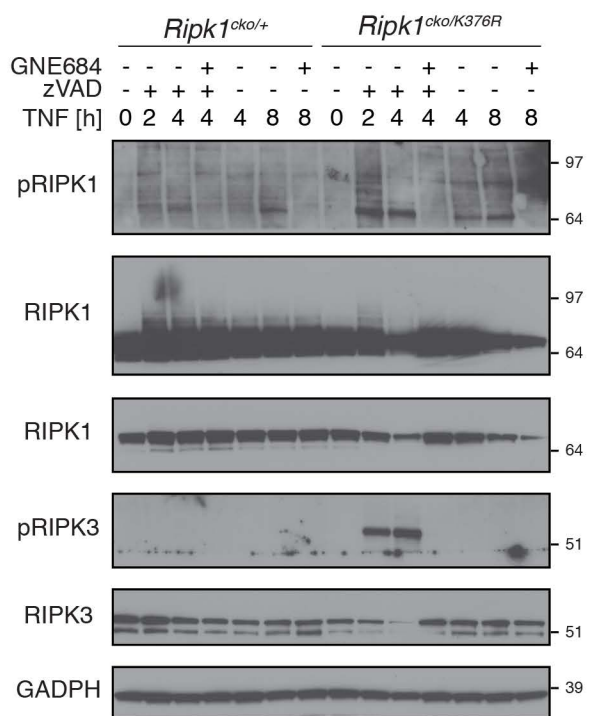
C



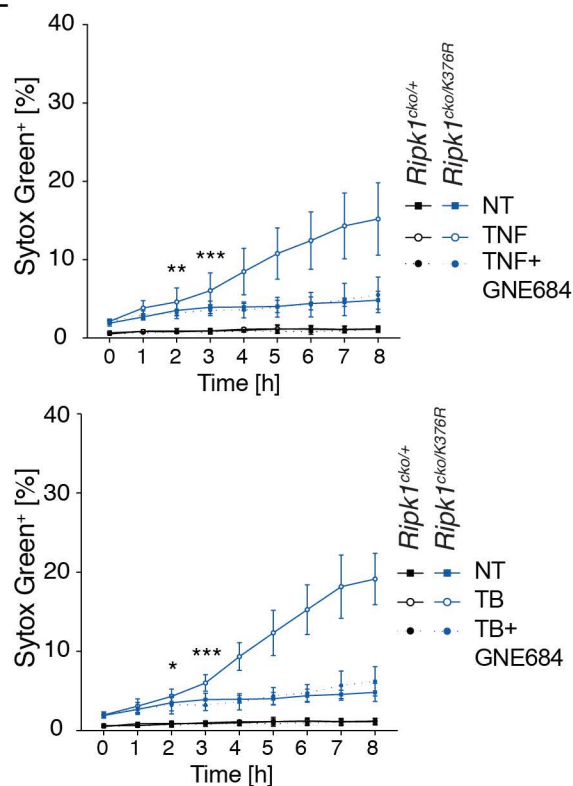
D



E

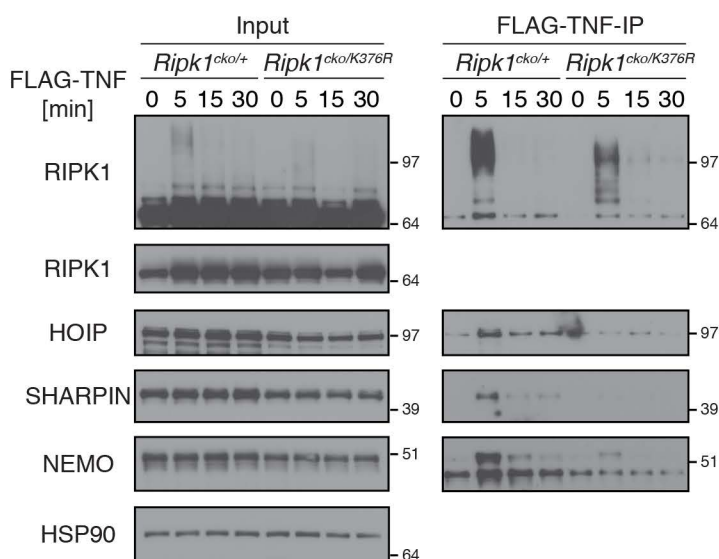


F

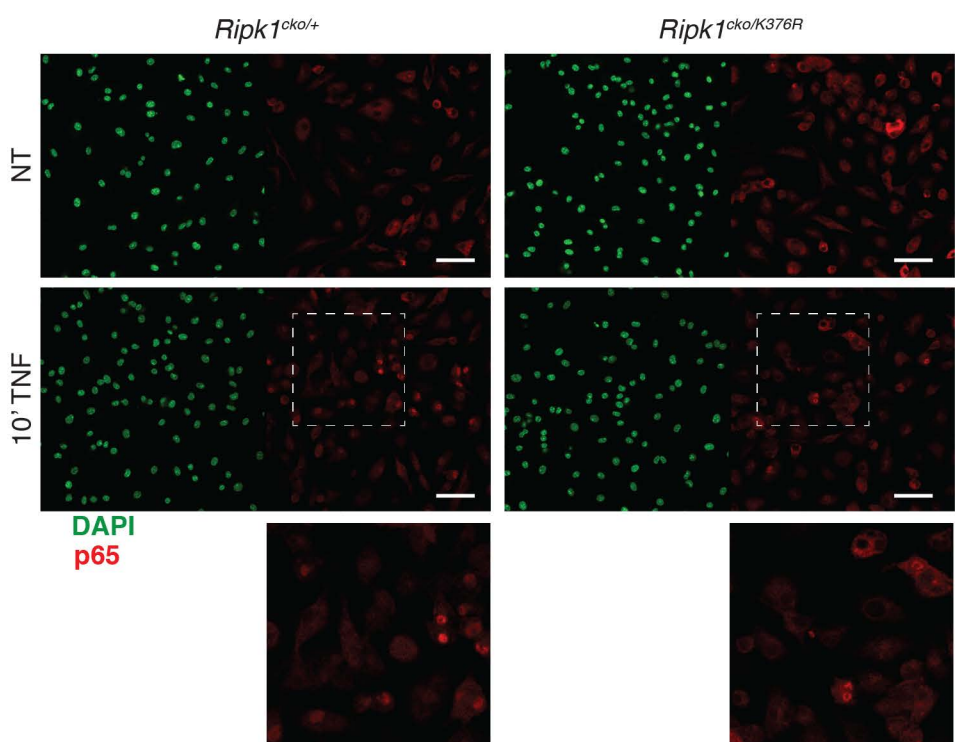


Supplementary Figure 6

A



B



C

