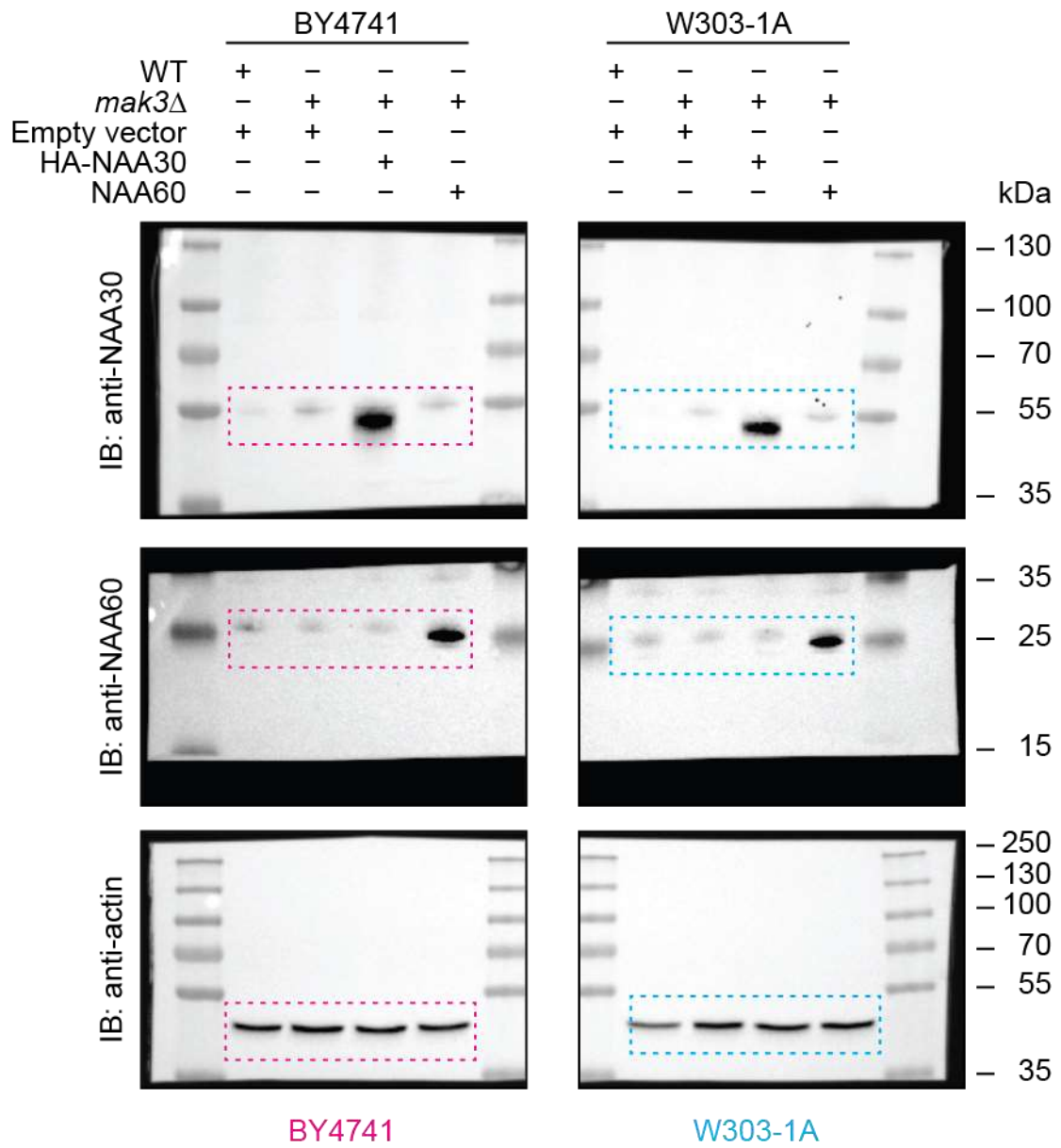
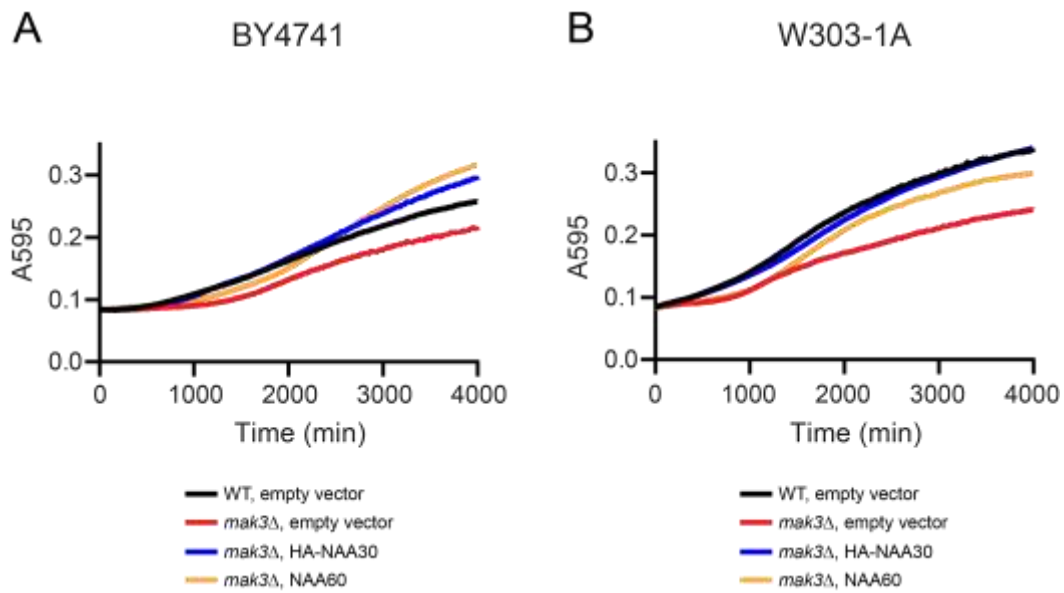


**Supplementary Fig. 1. Uncropped immunoblot images for Fig 2. panel B.**



Supplementary Fig. 2. Uncropped immunoblot images for Fig 5. panel A.



**Supplementary Fig. 3. *mak3Δ* mutant strains ectopically expressing human NAA60 show prolonged lag phase in glycerol medium.** Growth curves corresponding to fitted data in Fig 5, panel B-D. BY4741 (A) and W303-1A (B) wild type and *mak3Δ* mutant cells were transformed with empty pBEVY-U vector, HA-NAA30 or NAA60 plasmid. Cells were grown in SD-Ura medium supplemented with 3% glycerol in a 96-well plate at 30°C. Yeast growth was monitored by measuring absorbance at 595 nm every 6 minutes using a microplate reader. Shown is average growth curve of four technical replicates.