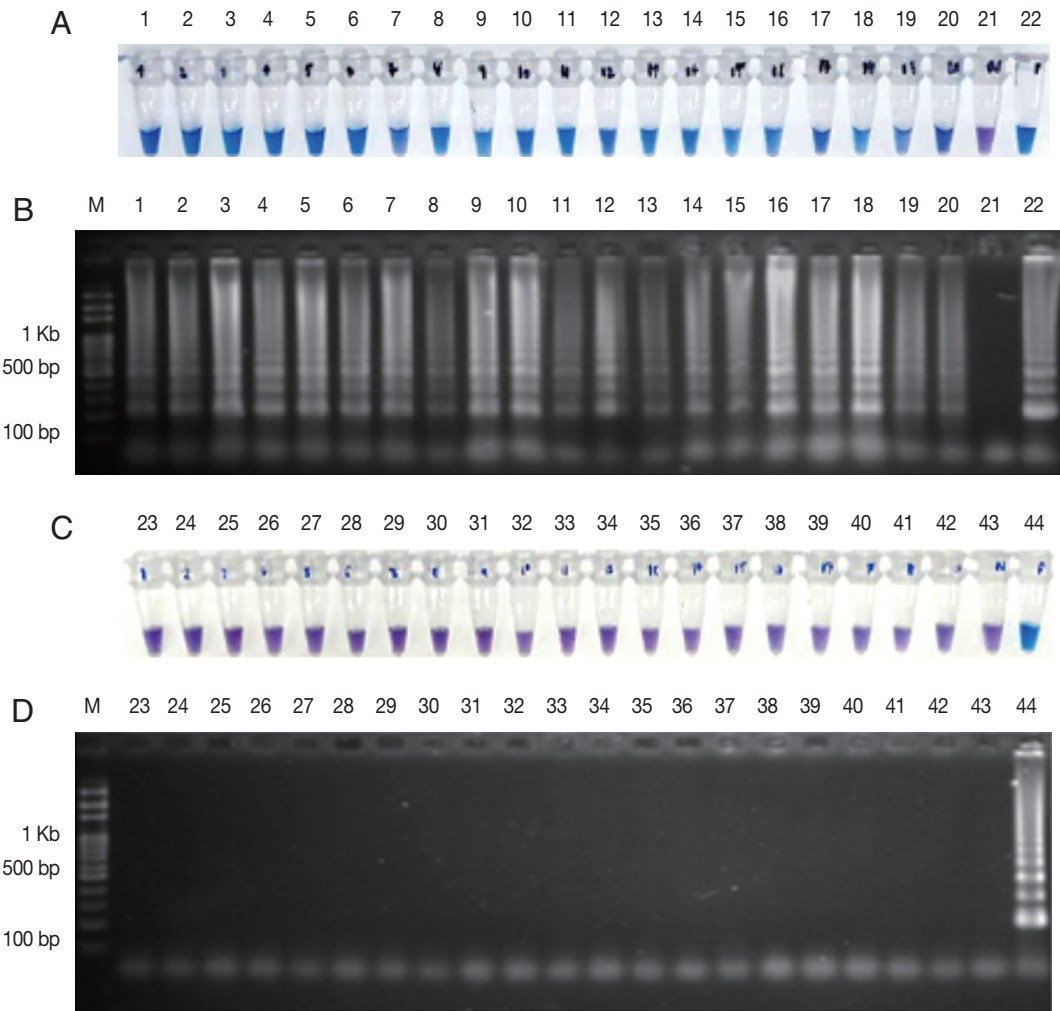


Supplementary Table S1. Primer sequences used for LAMP-SNP assay

Assay	Primers	Sequence (5'-3')
PCR for C580Y detection	K13c.621F	GGAATTAAGTGATGCTAGTGA
	K13c.2129R	GGGCCAAGCTGCCATTCATTTG
	K13c.1344F	AGGTGGATTTGATGGTGTAGAA
LAMP-SNP C580Y detection	F3	GAAAGCATGGGTAGAGGTG
	B3	TATTGTTCAACGGAATC
	BIP	CCATATGCCTTATTAGAAG-CTCCAACAACATATATTTGATTAAGG
	FIP	ACCATTAGTTCACCAATGAC-CCCCTAGATCATCAGCTATGc ^a

^a3' end of F2 region of FIP primer is contained mutant nucleotide (bold letter) and lowercase letter c is mismatch nucleotide.



Supplementary Fig. S1. Evaluation of clinical specimens by LAMP-SNP assay. (A) and (C); Amplification products of LAMP-SNP assay using HNB as a visual indicator. (B) and (D); Agarose gel electrophoresis of the LAMP-SNP products. (A) and (B); Labels: 1-20,23 represent C580Y mutation. (C) and (D); 23-42 were identified as *PfKelch13* C580 (wildtype). Labels: 21 and 43 were negative control. Label 44 was a plasmid that contained *PfKelch13*^{C580Y} as positive control.