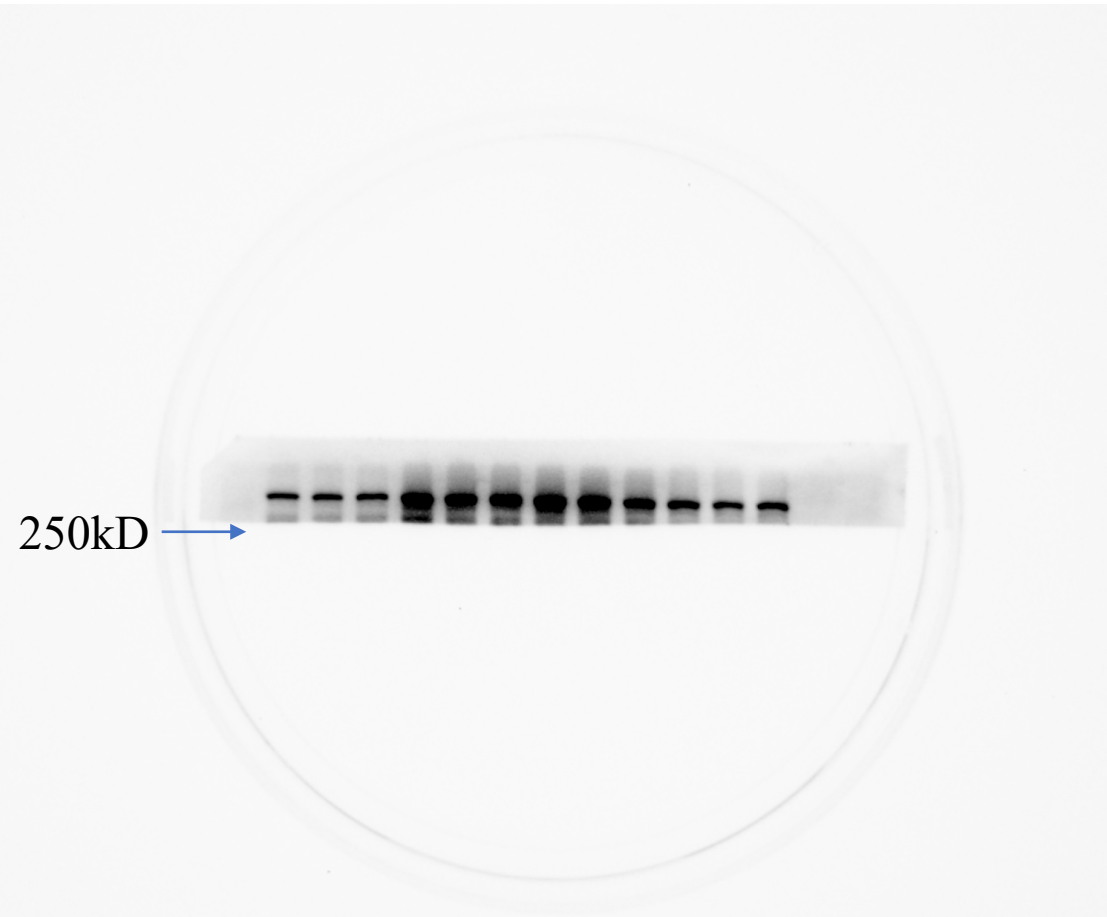
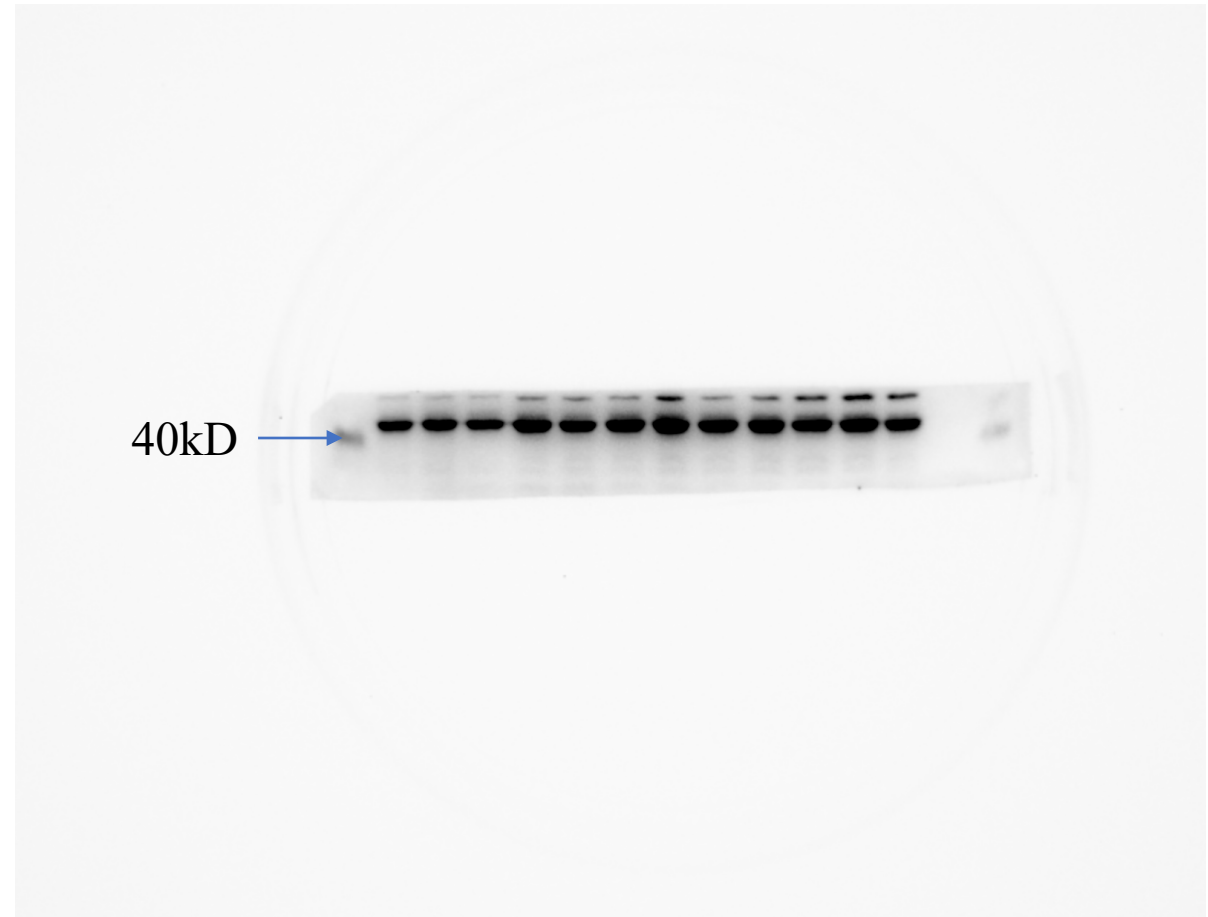


Full unedited gel/blot for Figure 3A



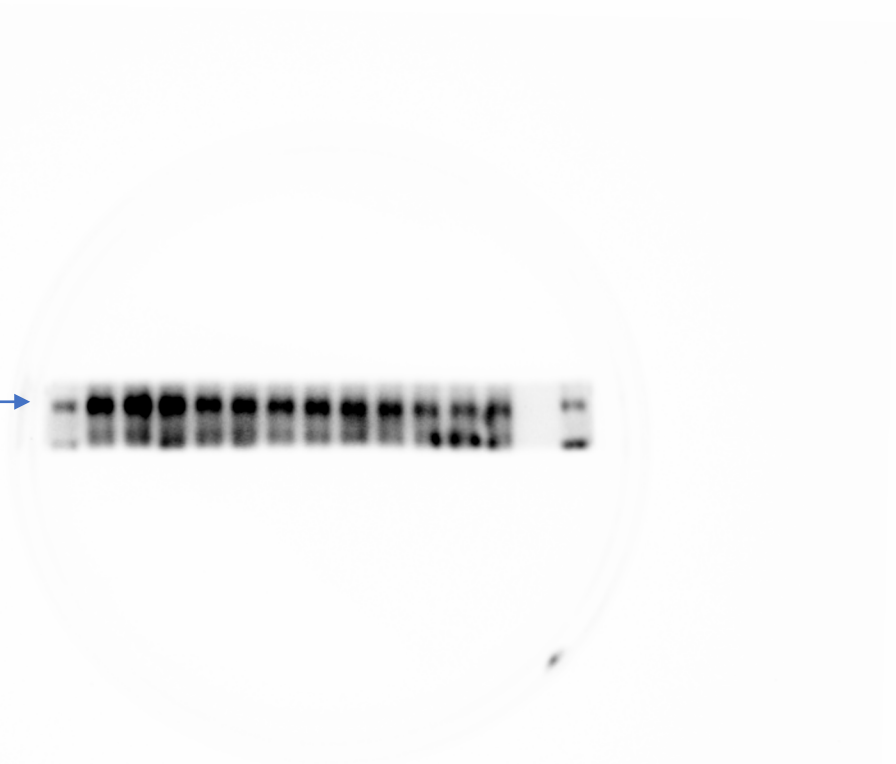
P-mTOR Ser 2448  
(289kD)



$\beta$ -actin  
(43kD)

Full unedited gel/blot for Figure 3B

150kD →

A Western blot image showing a single row of approximately 12 lanes. Each lane contains a dark, horizontal band of protein. The bands are all at a similar vertical position, corresponding to the 150kD marker on the left. The bands vary slightly in intensity and thickness across the lanes.

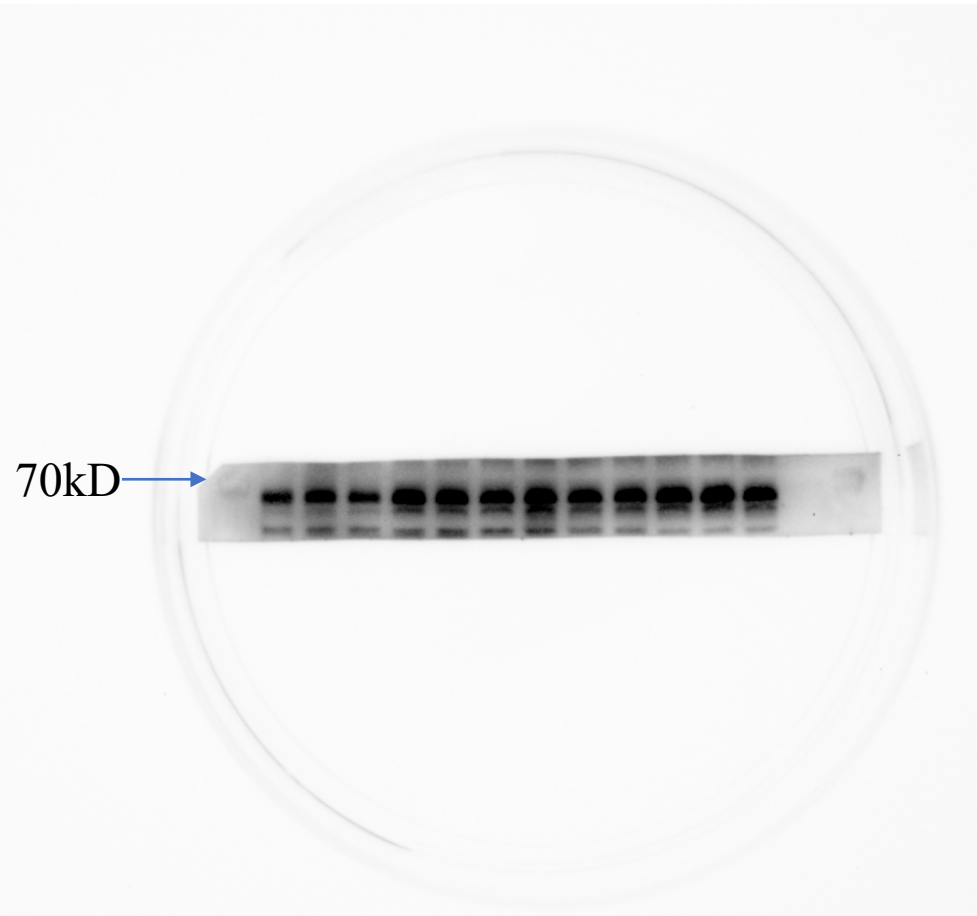
P-ULK-1 Ser 757  
(150kD)

40kD →

A Western blot image showing a single row of approximately 12 lanes. Each lane contains a dark, horizontal band of protein. The bands are all at a similar vertical position, corresponding to the 40kD marker on the left. The bands are relatively uniform in intensity and thickness across the lanes.

$\beta$ -actin  
(43kD)

Full unedited gel/blot for Figure 3C

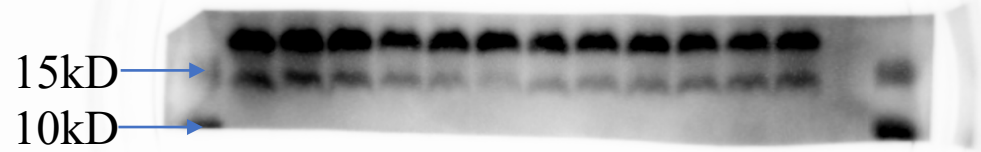


Beclin-1  
(43kD)

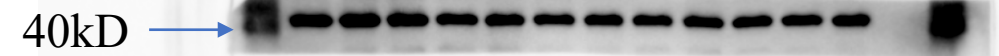


$\beta$ -actin  
(43kD)

Full unedited gel/blot for Figure 3D

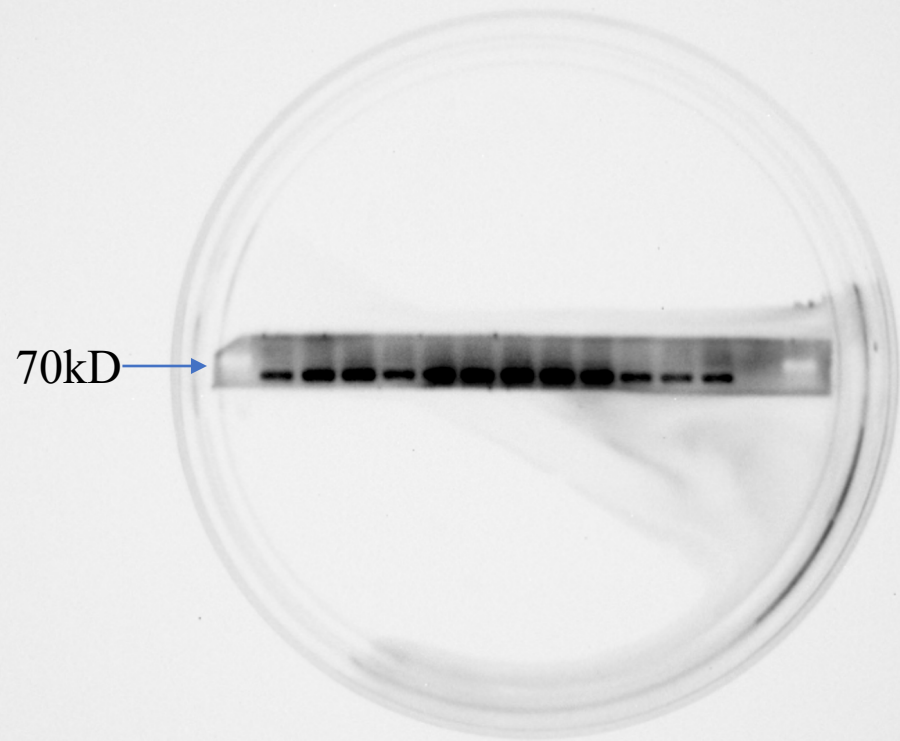


LC3 I (17kD)  
LC3 II(14kD)

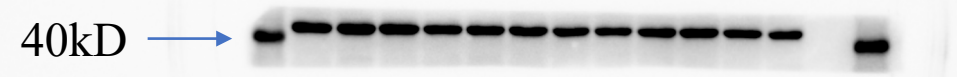


$\beta$ -actin  
(43kD)

Full unedited gel/blot for Figure 3E

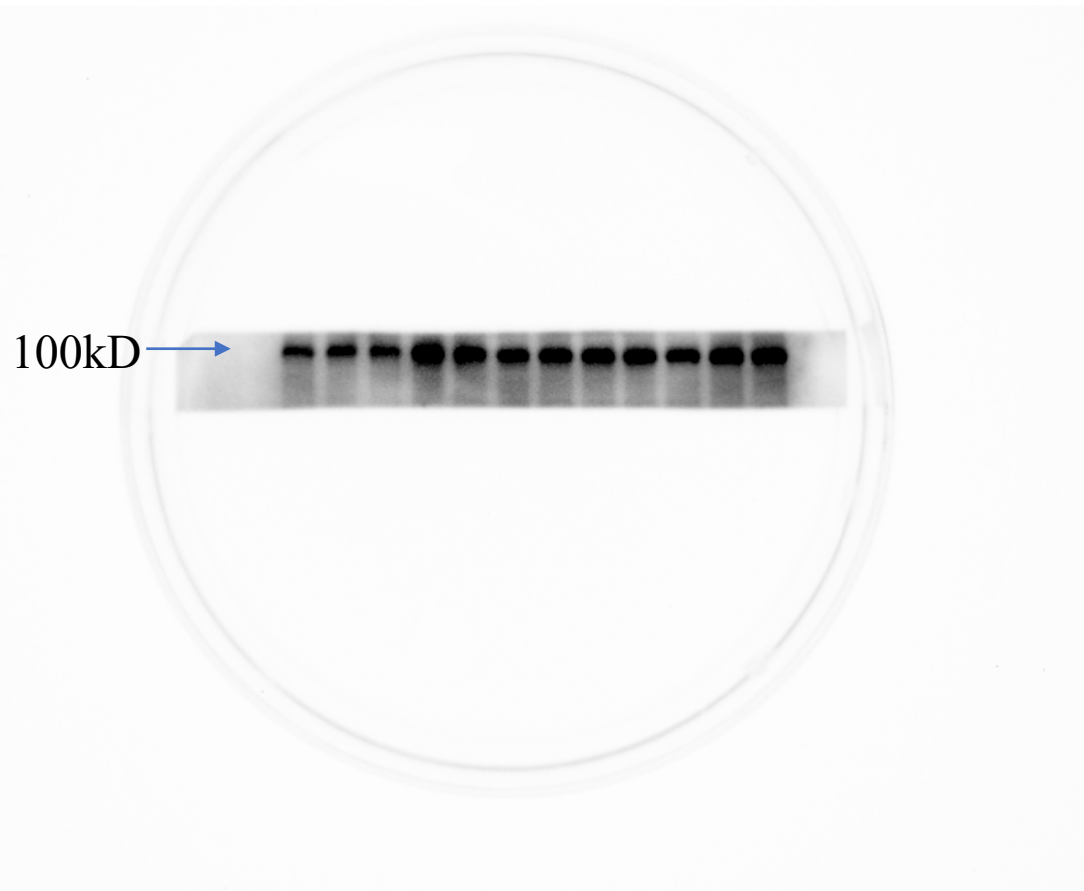


P62/SQSTM1  
(62kD)

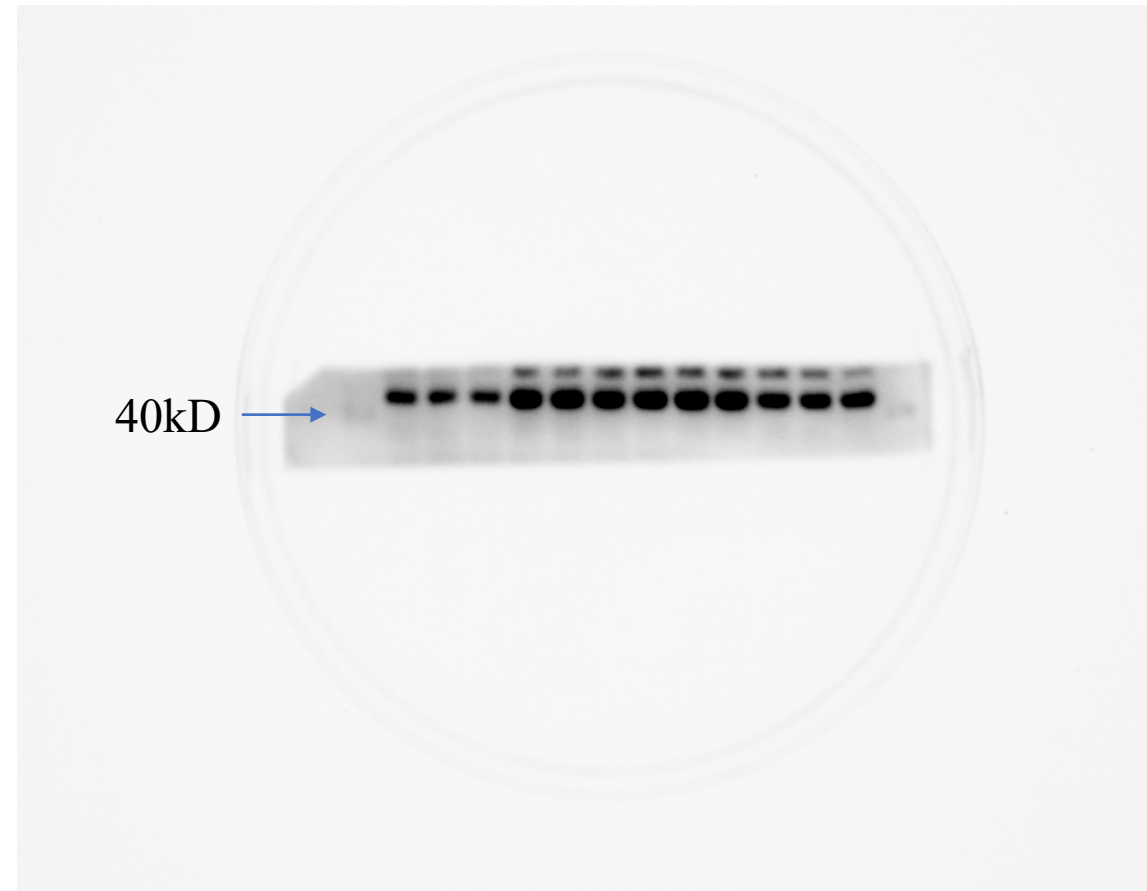


$\beta$ -actin  
(43kD)

Full unedited gel/blot for Figure 3F

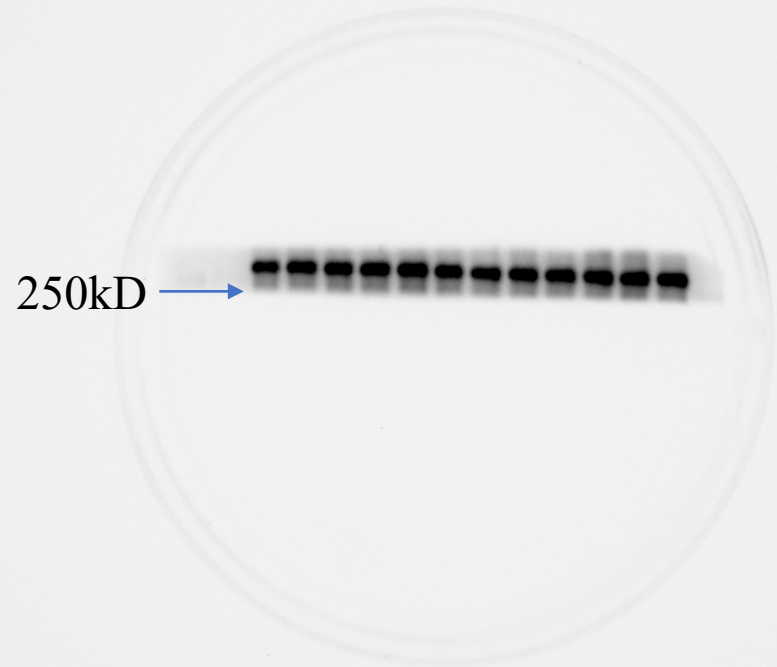


PI3K CIII(100kD)



$\beta$ -actin  
(43kD)

Full unedited gel/blot for Figure 4A

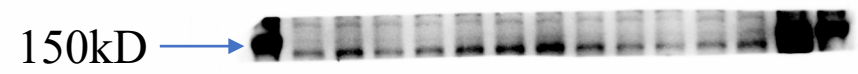


P-mTOR Ser 2448  
(289kD)

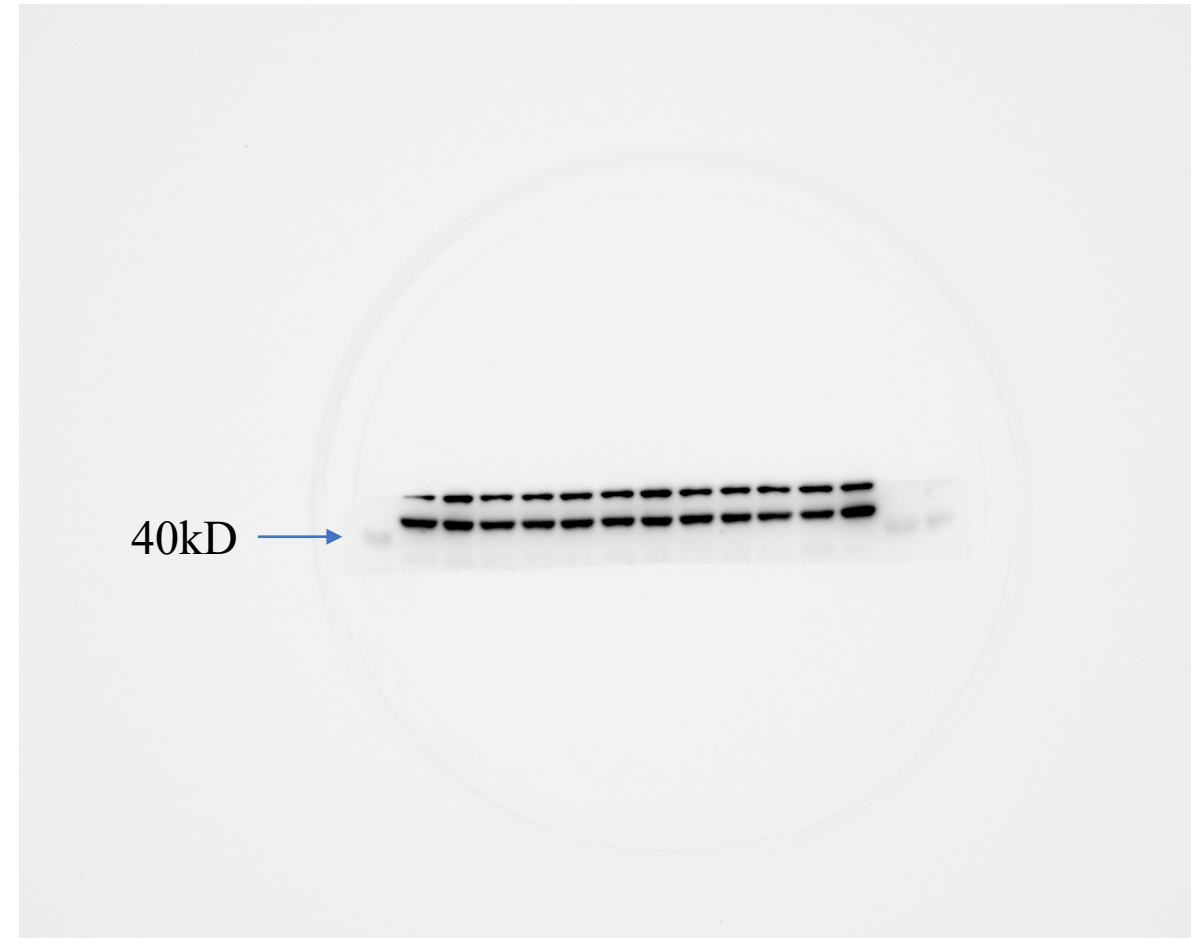


$\beta$ -actin  
(43kD)

Full unedited gel/blot for Figure 4B



P-ULK-1 Ser 757  
(150kD)



$\beta$ -actin  
(43kD)



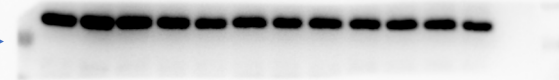
Full unedited gel/blot for Figure 4C

70kD →



Beclin-1  
(60kD)

40kD →



$\beta$ -actin  
(43kD)

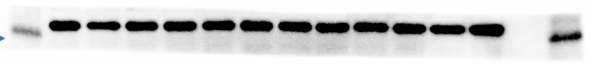
Full unedited gel/blot for Figure 4D

15kD →  
10kD →



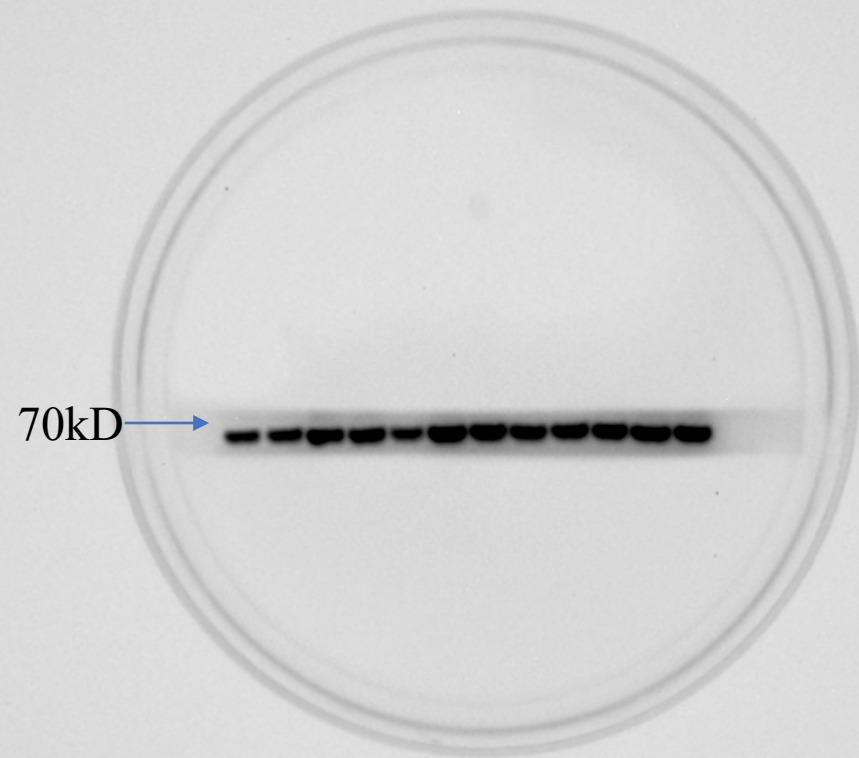
LC3 I (17kD)  
LC3 II (14kD)

40kD →

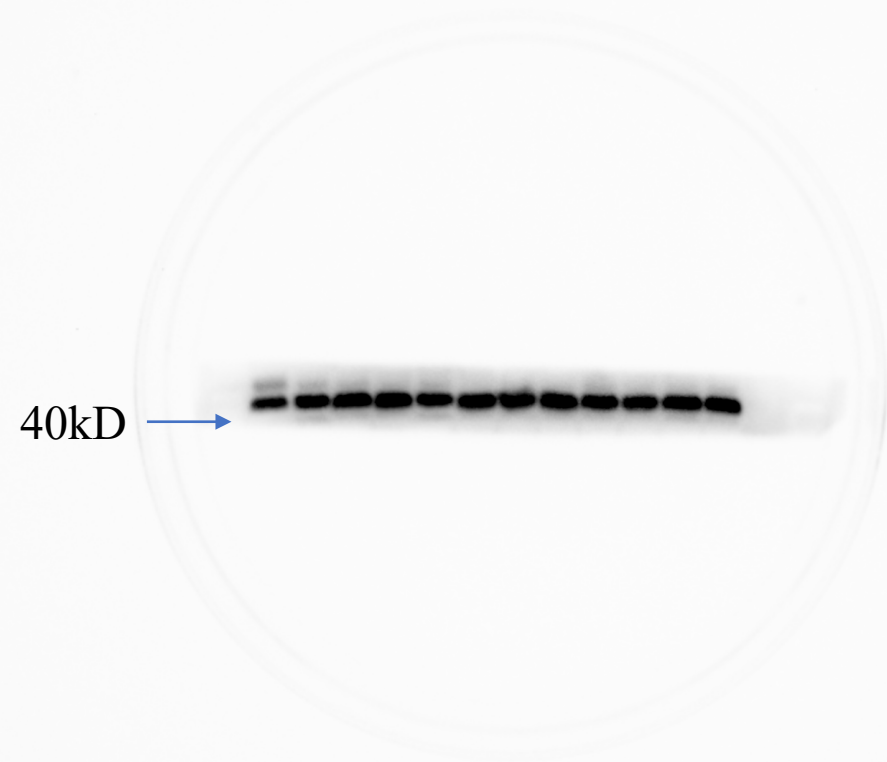


$\beta$ -actin  
(43kD)

Full unedited gel/blot for Figure 4E

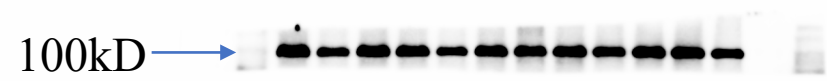


P62/SQSTM1  
(62kD)

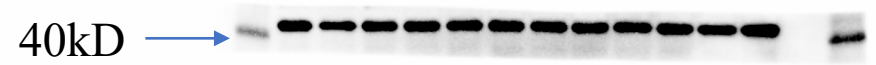


$\beta$ -actin  
(43kD)

Full unedited gel/blot for Figure 4F

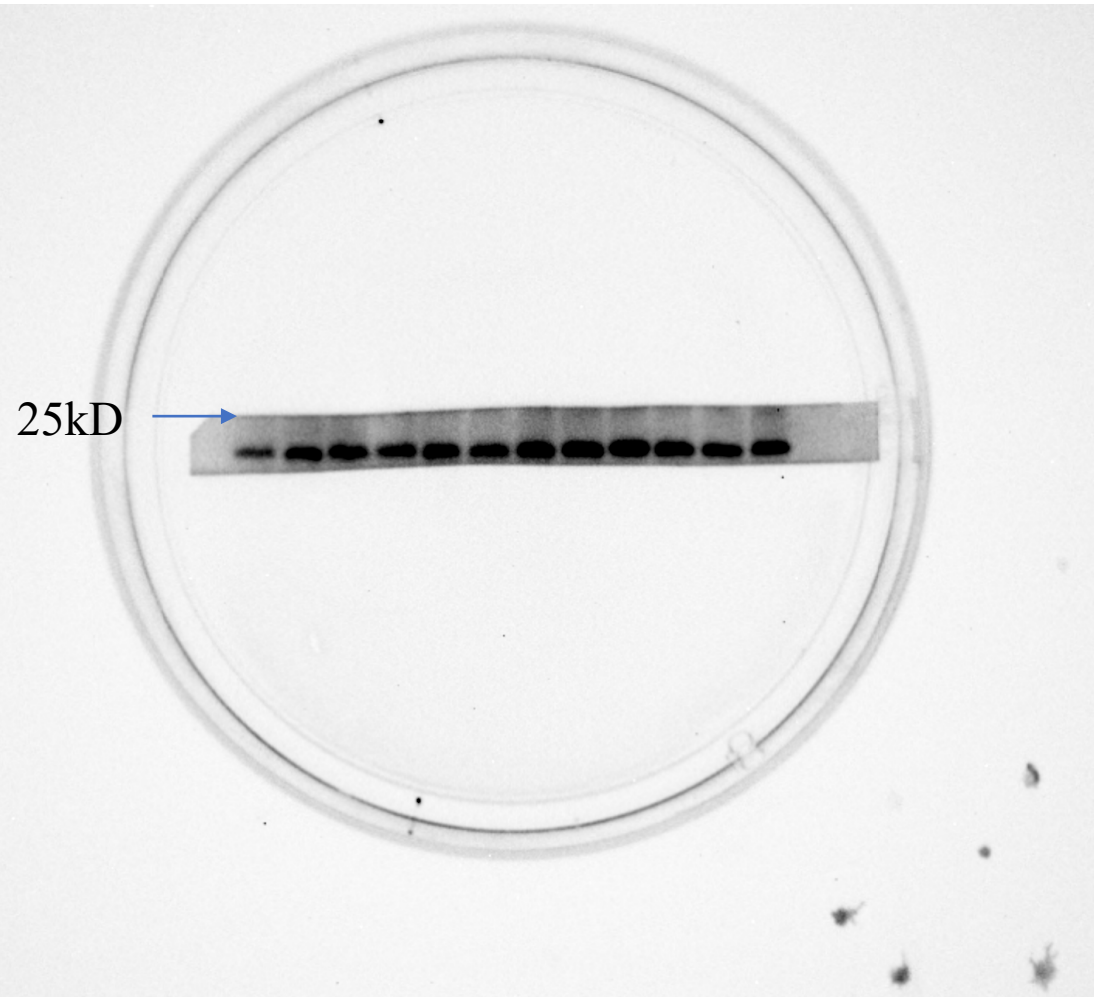


PI3K CIII(100kD)

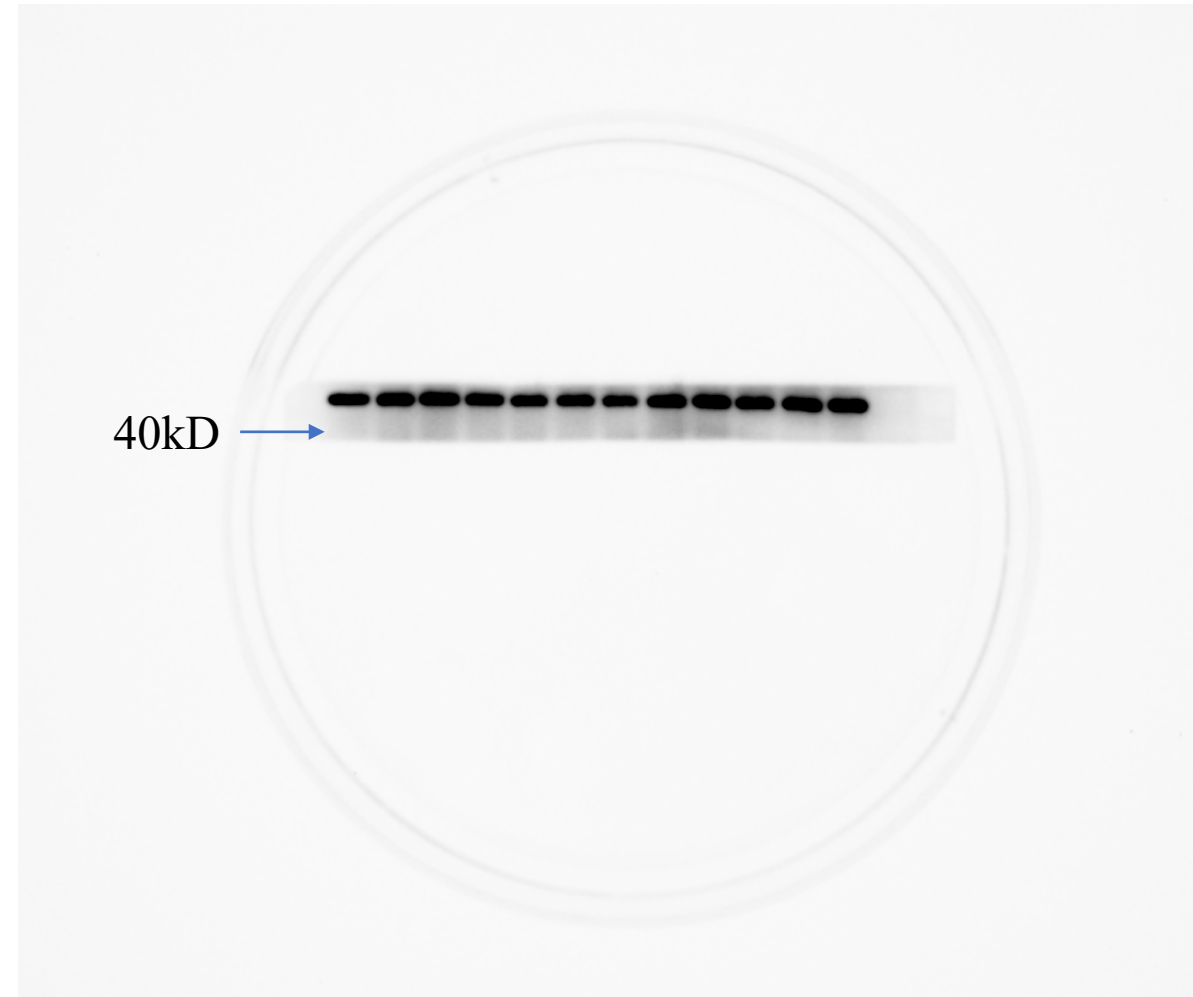


$\beta$ -actin  
(43kD)

Full unedited gel/blot for Figure 5A



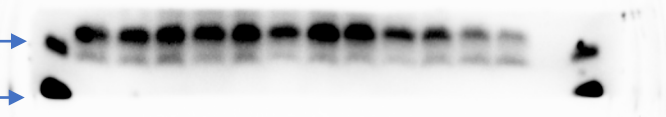
Bax (21kD)



$\beta$ -actin  
(43kD)

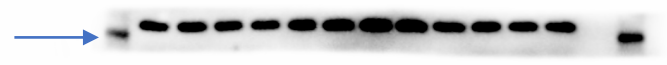
Full unedited gel/blot for Figure 5B

15kD →  
10kD →



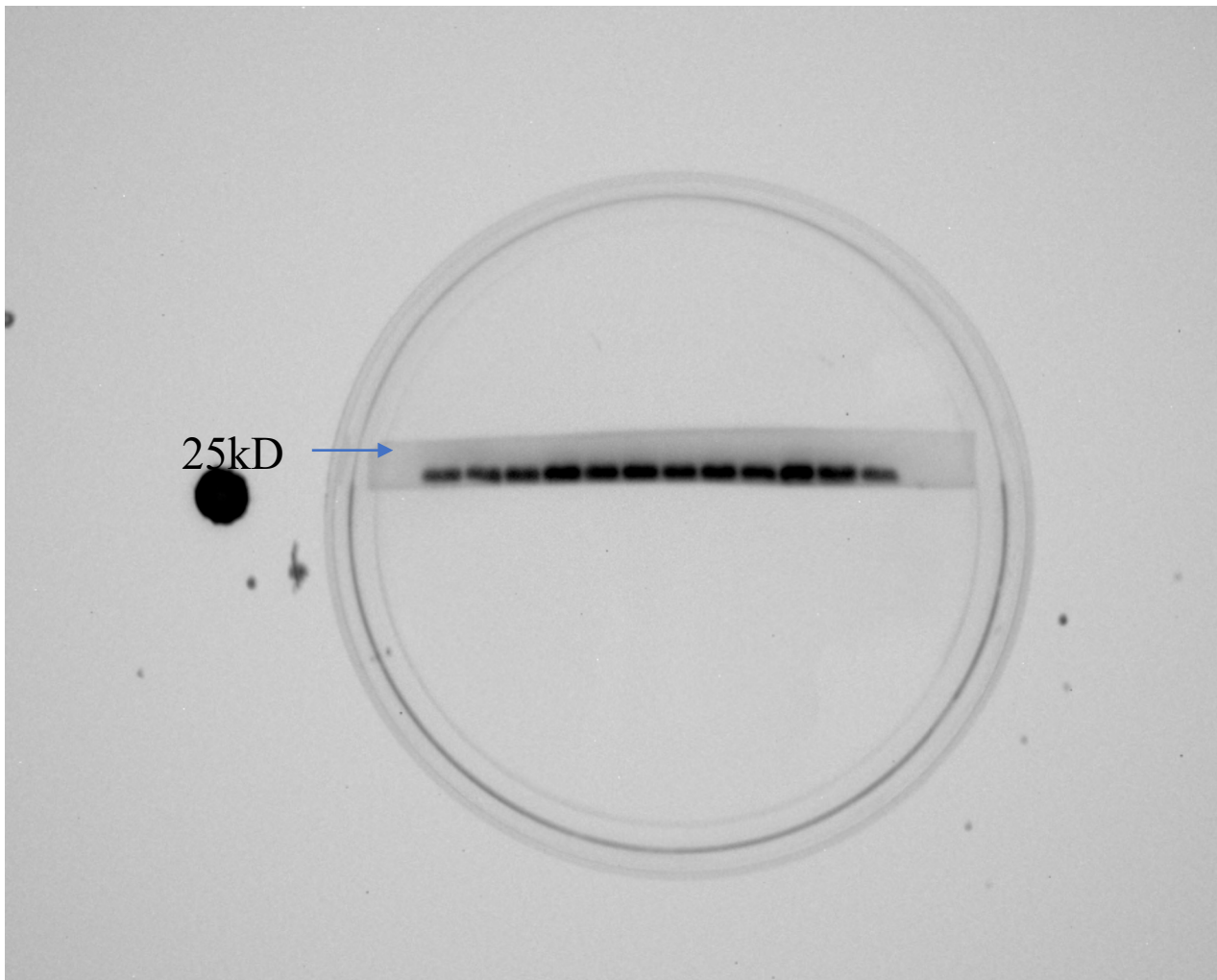
Cleaved caspase-3 (17kD)

40kD →



$\beta$ -actin  
(43kD)

Full unedited gel/blot for Figure 5C



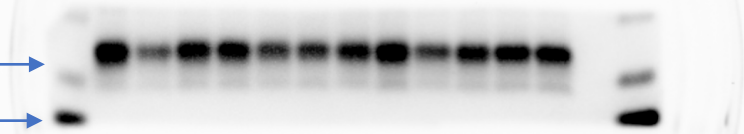
Bax (21kD)



$\beta$ -actin  
(43kD)

Full unedited gel/blot for Figure 5D

15kD →  
10kD →



Cleaved caspase-3 (17kD)

40kD →



$\beta$ -actin  
(43kD)