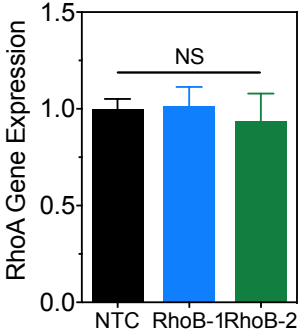
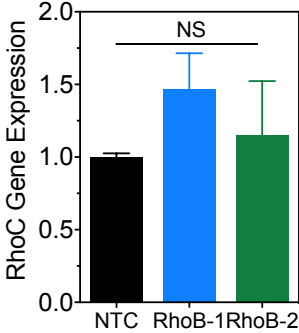


Supplemental Figure 1: RhoA and RhoC RNA levels are not affected by altering RhoB expression.

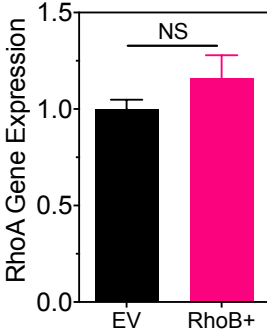
1A



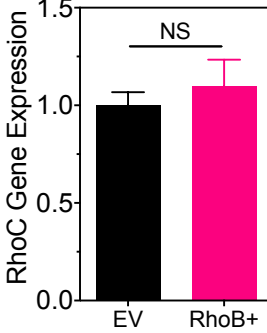
1B



1C

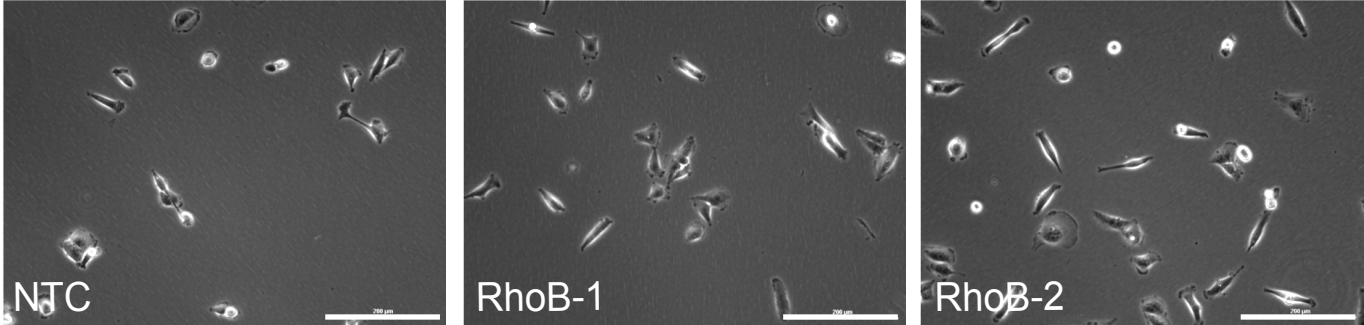


1D

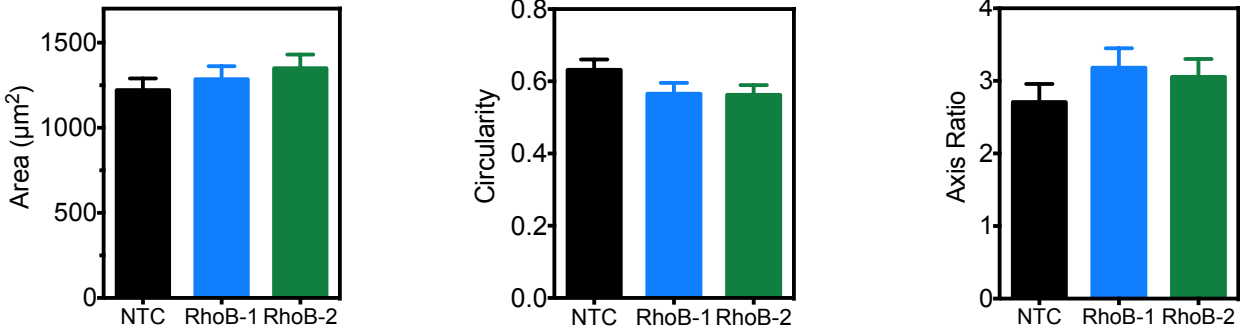


Supplemental Figure 2: Altering RhoB expression does not affect cell morphologies.

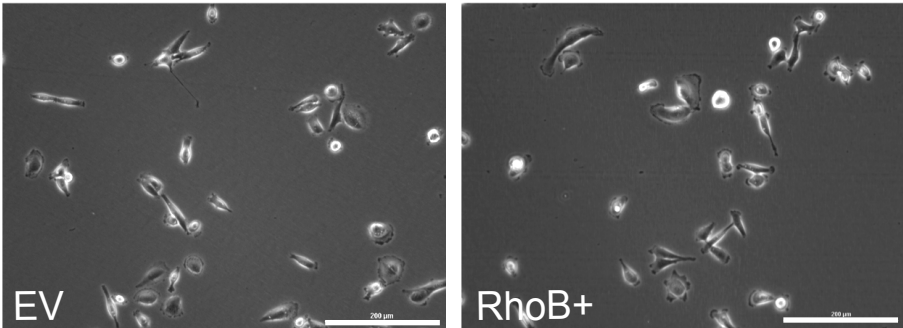
2A



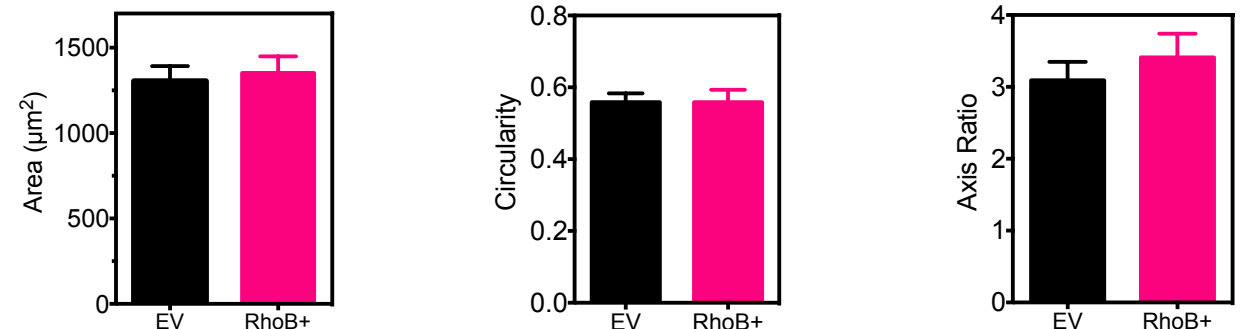
2B



2C

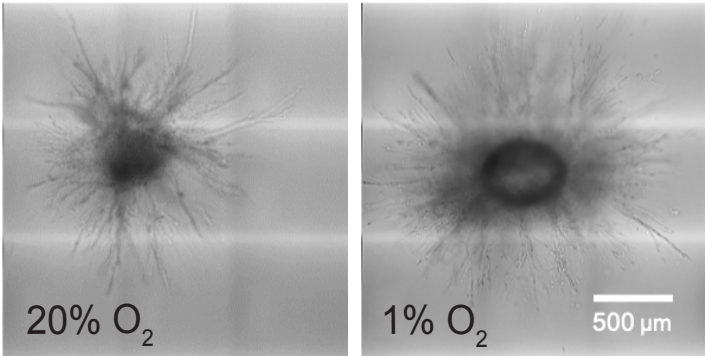


2D

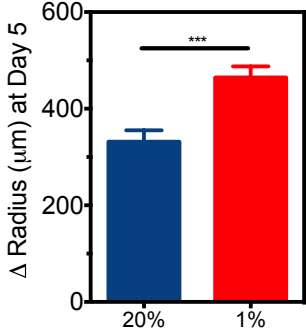


Supplemental Figure 3: Hypoxia increases spheroid invasion and migration.

3A

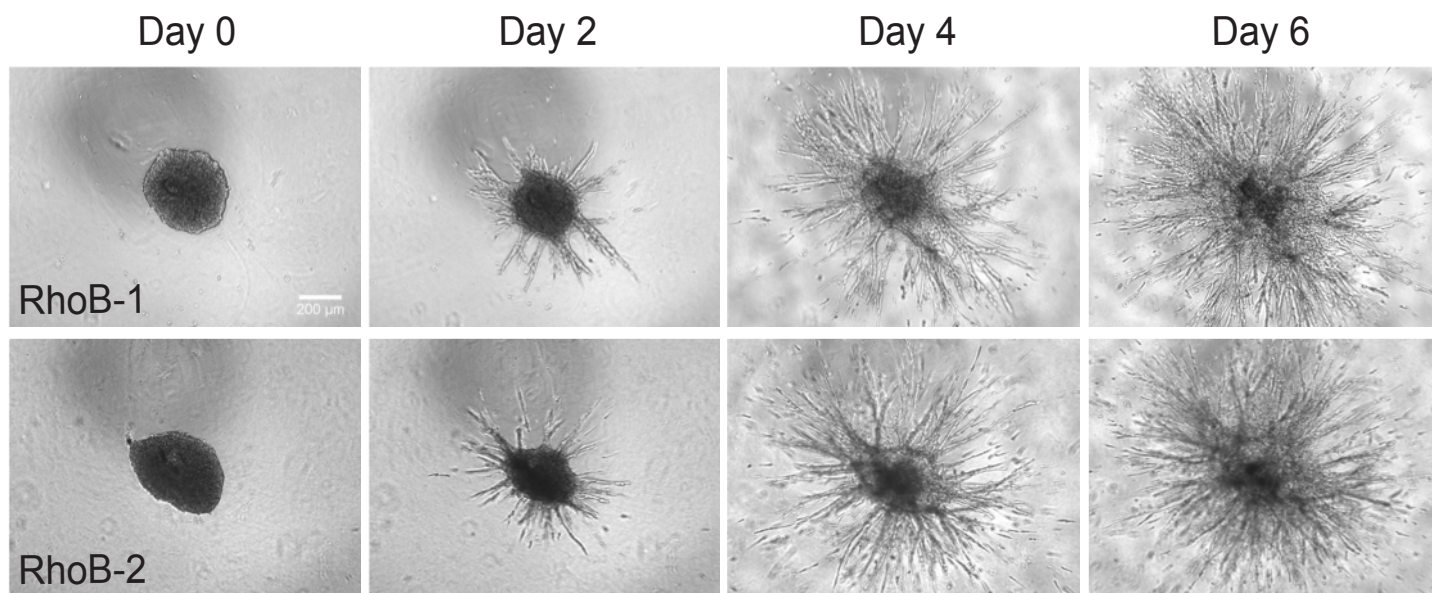


3B

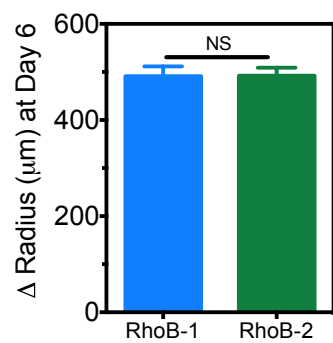


Supplemental Figure 4: RhoB knockdown does not affect migration or invasion in spheroids.

4A

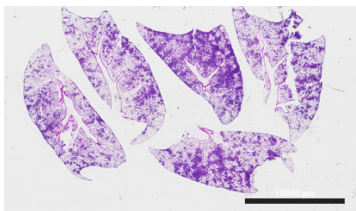


4B

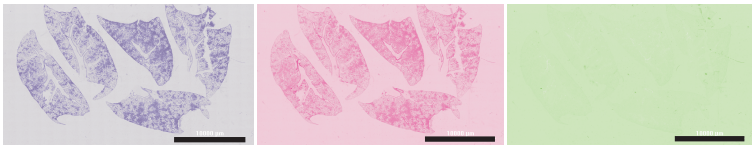


Supplemental Figure 5: Thresholding method to quantify stained areas.

5A



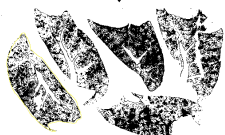
H&E Color Deconvolution



Threshold

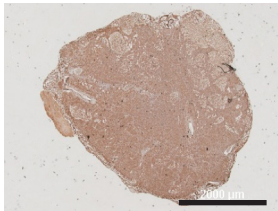


Region of Interest

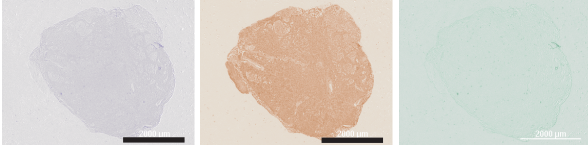


Measure % Area

5B



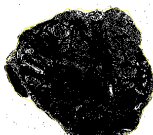
H DAB Color Deconvolution



Threshold



Region of Interest



Measure % Area