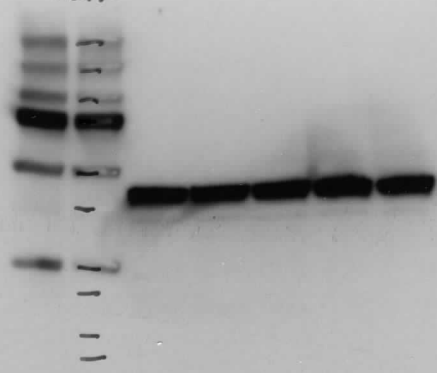


...ENMI-HBC



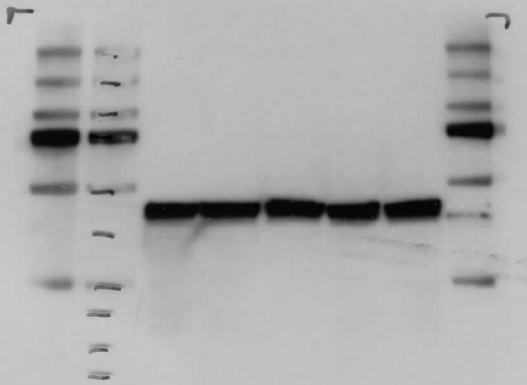
COA 60,3,5 GSK 50 mg ^{active} 7

actin



0 5 10 15 20

03021B SREP 454343



0 5 10 15 20

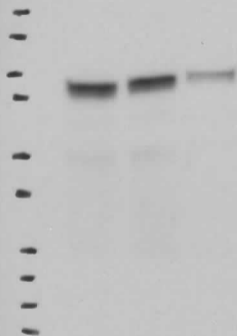
LO30248 WAC hSK343
altik.

5

1
1
1
1
1
1
1
1
1
1
1
1
1



LO30218 AS 0 5 10 15 20
GSKJ43 R242



CO42319 COA305, 10 GSK343 50mg

1:1000 E442

250

1 1 1



0

3

15

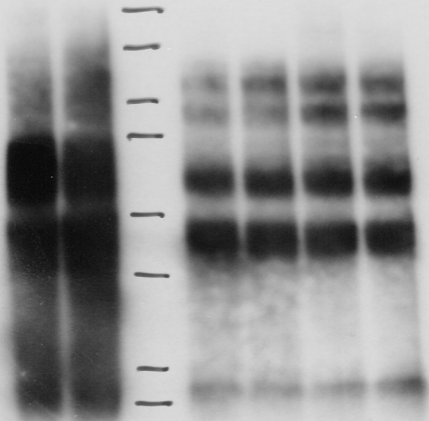
1 1 1
1 1 1
1 1 1

CONG

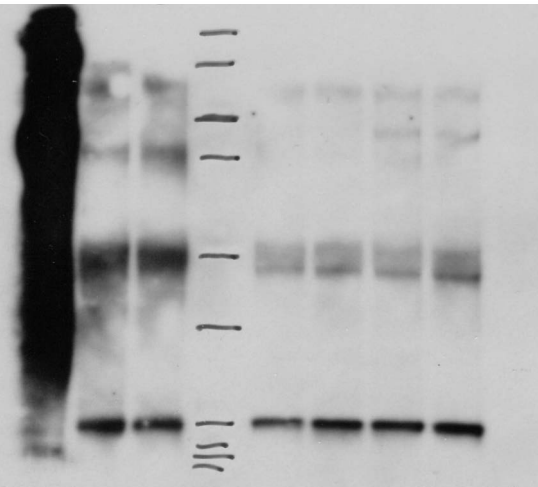
65K

E2K2

L

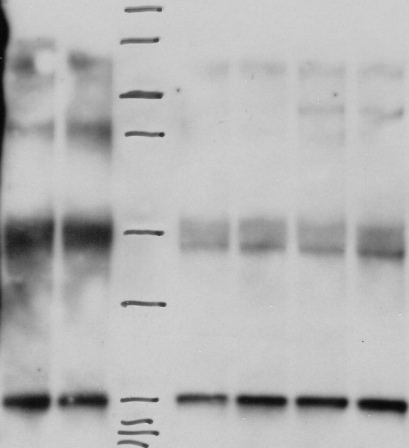
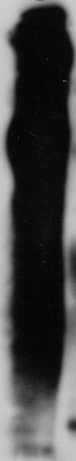


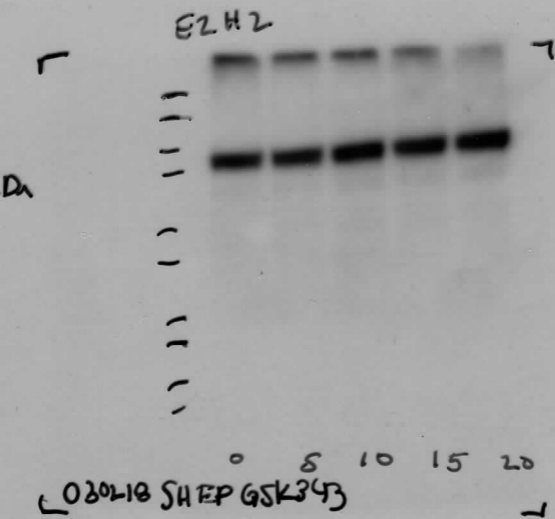
042018 EZH2-FAK COIP



(+) (-) (-)

AS BE SHIP WAL



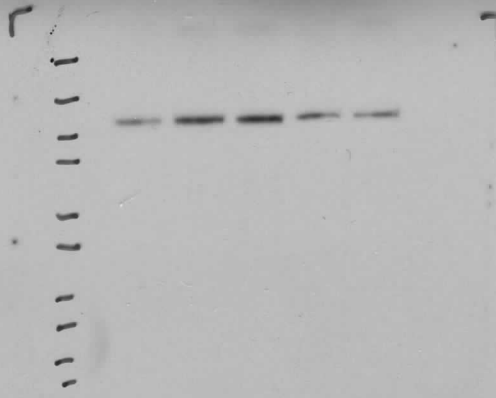


EM2



0 5 10 15 20

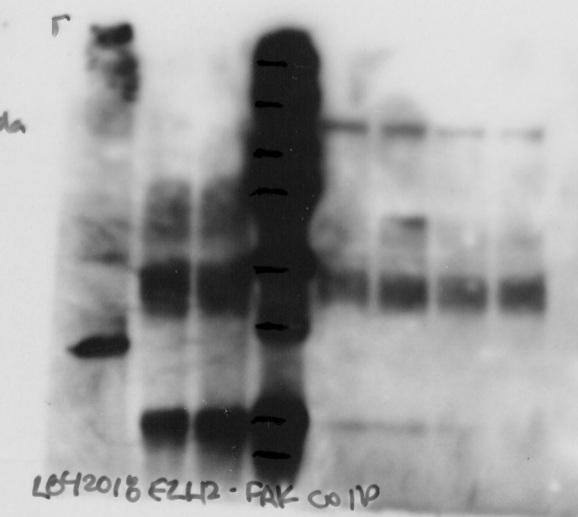
L030218 WAC GSK343



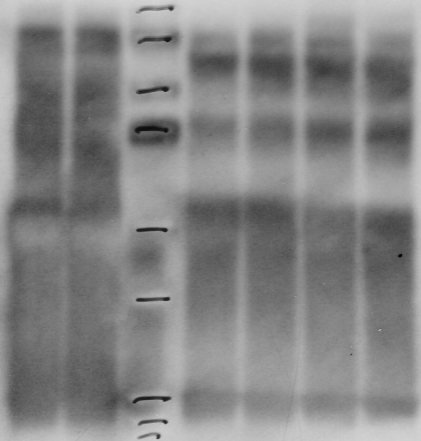
L030218 DS 0 5 10 15 20
 GSK3 β FAK



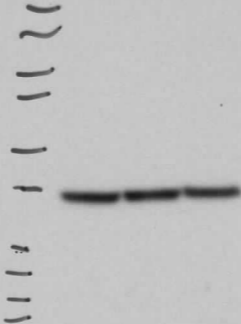
030218 BE GSK3⁵4¹⁰B¹⁵ 20
FRK



LBH2018 E2L12 - FAK Co IP

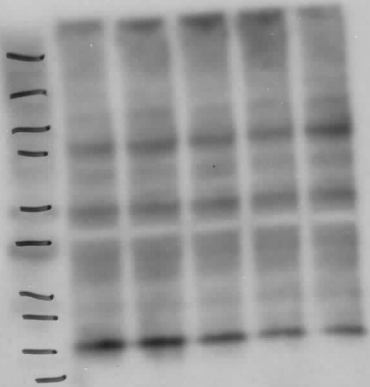


APPV
1:1000
classical



LQ4819 WA 30, 5, 10

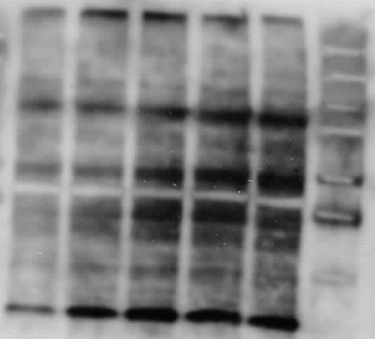
37



0 5 10 15 20

L0302P8 AS GSK H3

1000000



0 5 10 15 20

LE302-10

BE GSK

1+3

1



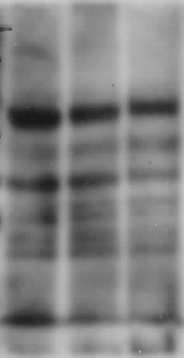
COX6

GSK ←

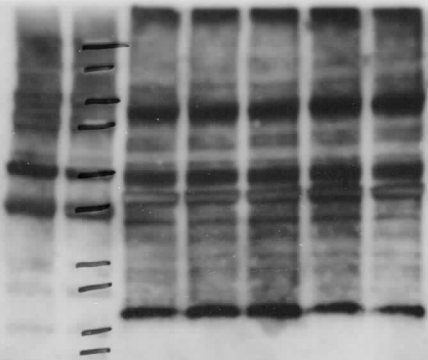
H3



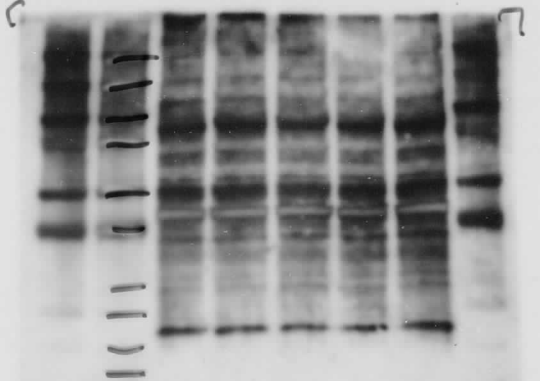
0 5 10



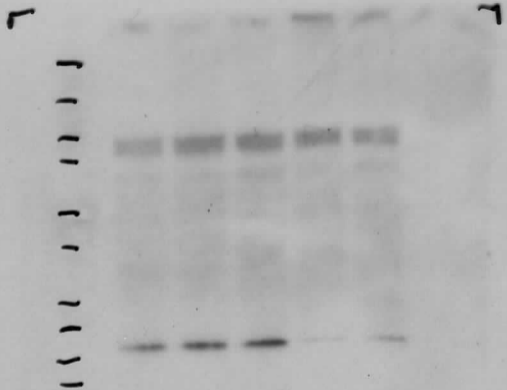
042319⁵ CA3 GSK #3



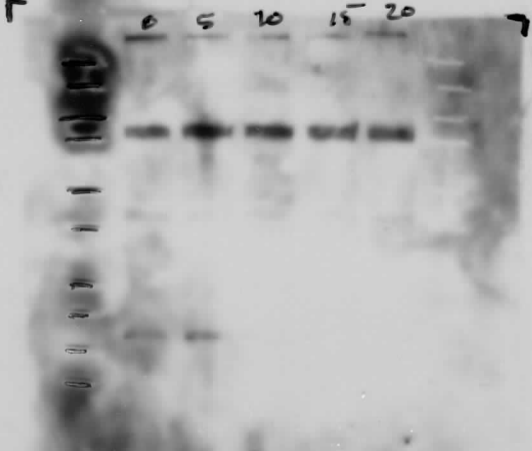
030218 SHEP 0 5 10 15 20
GSK #3



030218 0.5 10 15 20
WAC GSK H3



LD3021BAS 0 5 10 15 20 H3K
L5K343



6 080218 BE GSK-3 β 13
 0 5 10 15 20 H3IC



1:1000

H3K27me3

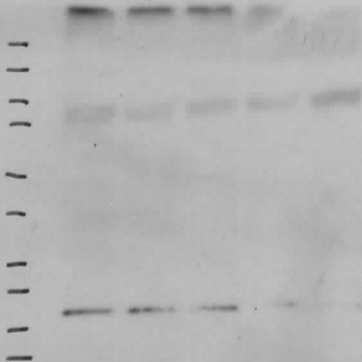
042319 CoA3 0,5, 10GSKJH3 50ng



AT3K

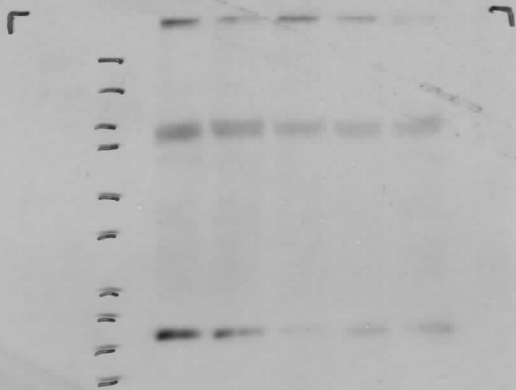
(0.46 0,3,5 65K 50µg)

H3K27me



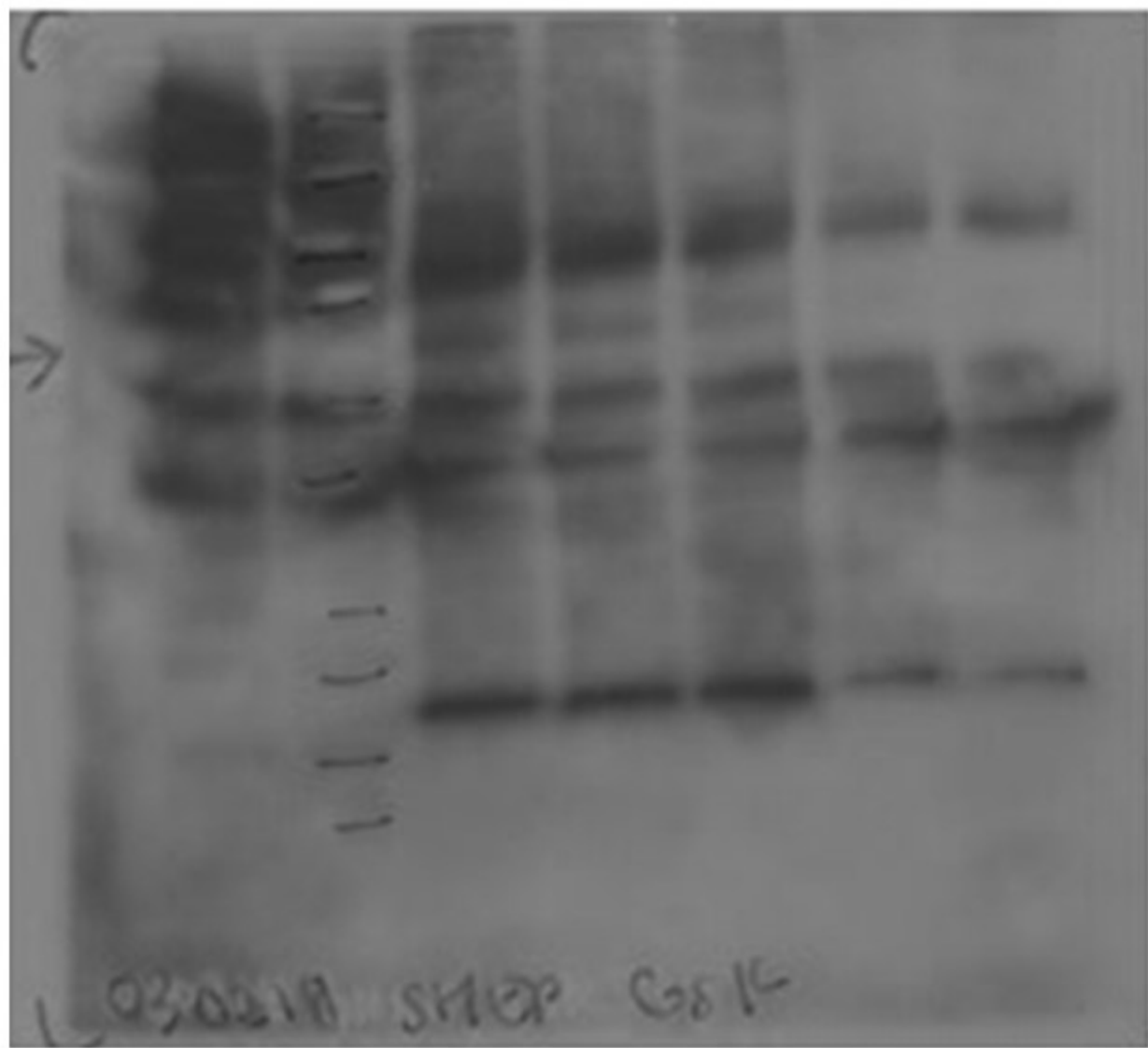
0 5 10 15 20

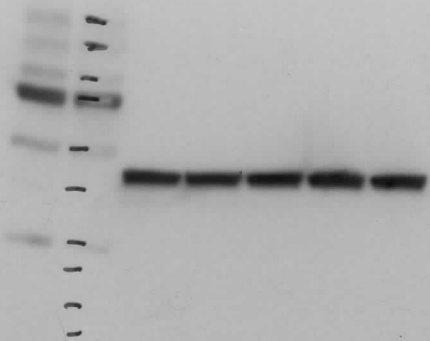
L 030218 STEP GSK3413



0 5 10 15 20

030218 WAC GR343
H3K27me

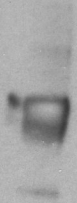




L 030218 SHED 0 5 10 16 20
GSK343

E2M2
1:1000
class 12

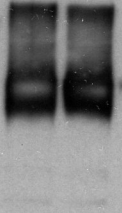
~ IgG



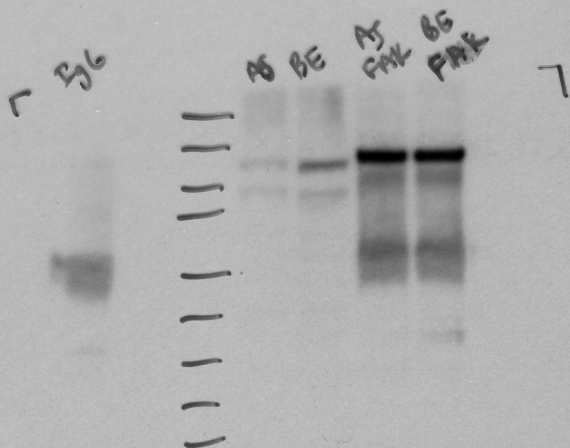
AS BE



AS BE
FAK FAK



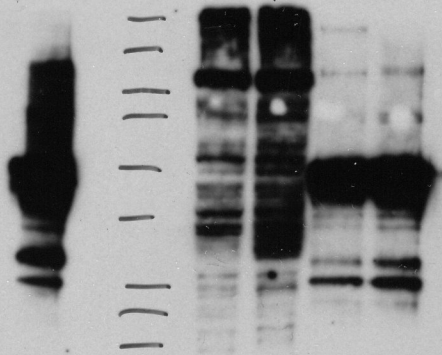
~ 122920 AS BE IP FAK ~



FAK
1:1000
Classic

122920 AS BE IP FAK

FAK
1:1500
cloud 200



122920 AS.BEIR P4H2



L22920 AS BE DQ E2M