

A Multicenter, Prospective, Observational Study to Determine Association of Mesangial C1q Deposition with Renal Outcomes in IgA Nephropathy

Li Tan, MD ^{1,5,6}, Yi Tang, MD ¹, Gaiqin Pei, MD ^{1,6}, Zhengxia Zhong, MD ^{2,6}, Jiaxing Tan, MD ^{1,6}, Ling Zhou, MD ^{3,6}, Dongmei Wen, MD ^{4,6}, David Sheikh-Hamad, MD ⁵, Wei Qin, MD ¹

¹ Division of Nephrology, Department of Medicine, West China Hospital, Sichuan University, Chengdu, Sichuan, China.

² Division of Nephrology, Department of Medicine, Affiliated Hospital of Zunyi Medical University, Medical University, Zunyi, Guizhou, China.

³ Division of Nephrology, Zigong Third People's Hospital, Zigong, Sichuan, China.

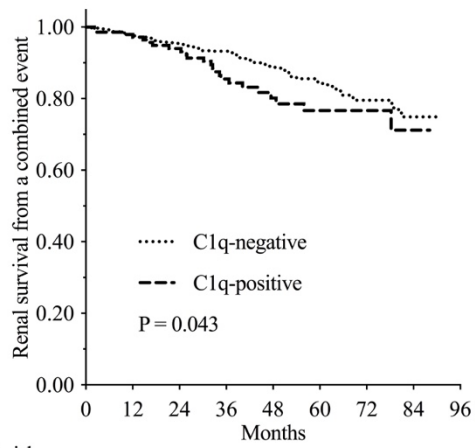
⁴ Division of Nephrology, People's Hospital of Jianyang, Chengdu, Sichuan, China.

⁵ Section of Nephrology, Department of Medicine, Baylor College of Medicine, Houston, TX, USA.

⁶ West China School of Medicine, Sichuan University, Chengdu, Sichuan, China.

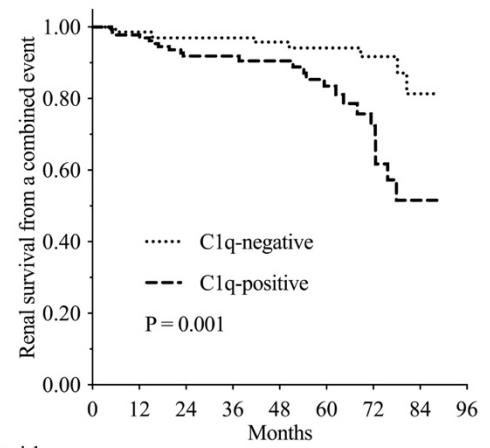
Correspondence to: Wei Qin, Division of Nephrology, Department of Medicine, West China Hospital, Sichuan University, Chengdu, Sichuan, China. Tel. 86-28-85422338, Fax +86-028-8542-3341. Email qinweihx@scu.edu.cn.

A. All patients in the unmatched cohort



NO. at risk	0	12	24	36	48	60	72	84	96
C1q-negative	926	823	655	474	345	236	146	25	0
C1q-positive	145	122	97	73	56	41	21	5	0

B. All patients in the matched cohort (1:1 PSM)



NO. at risk	0	12	24	36	48	60	72	84	96
C1q-negative	145	127	111	86	64	48	30	5	0
C1q-positive	145	122	97	73	56	41	21	5	0

Supplementary Fig. S2. Kaplan-Meier analysis for the probability of composite endpoint.