

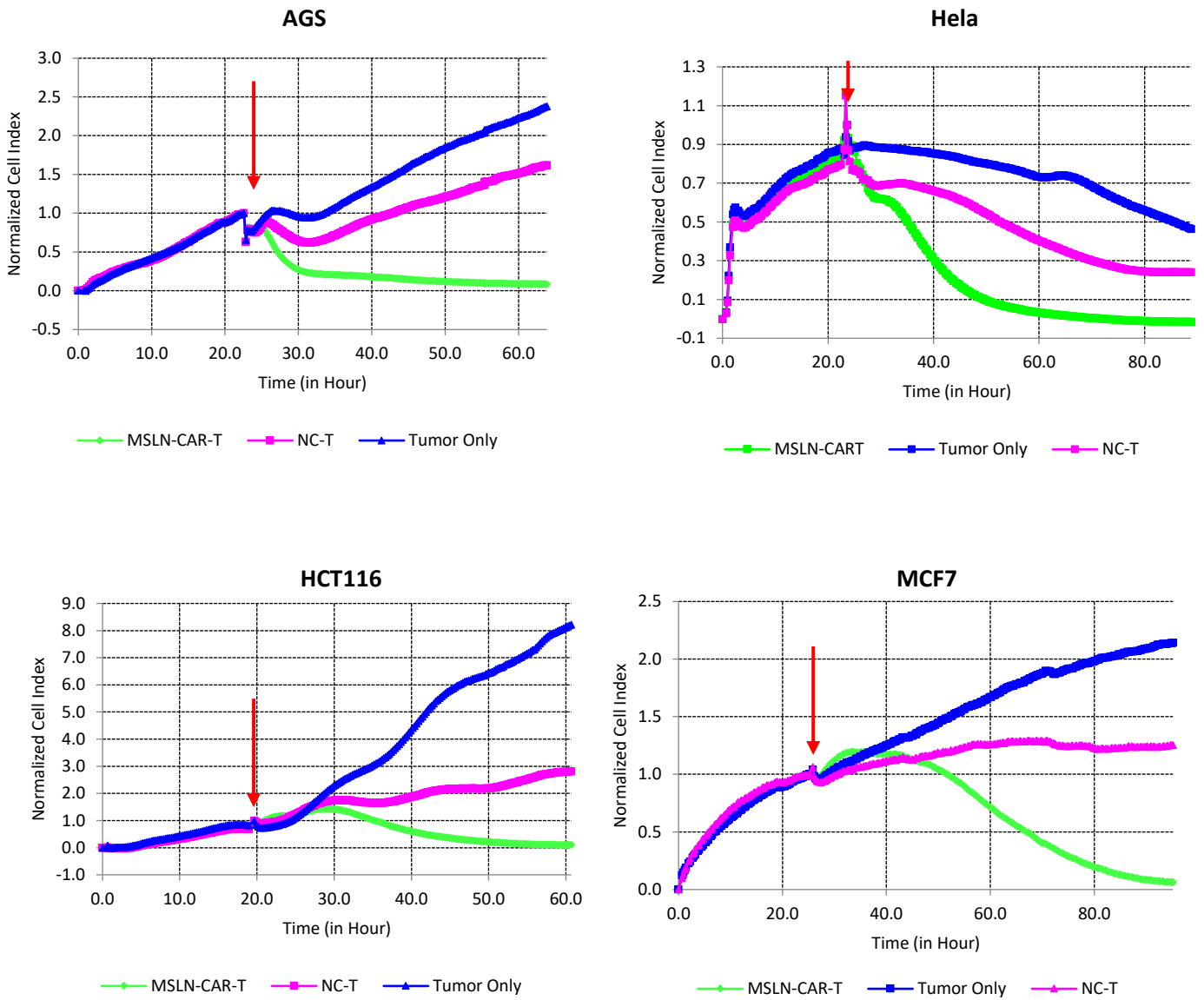
OMTO, Volume 20

Supplemental information

The antitumor capacity of mesothelin-CAR-T cells in targeting solid tumors in mice

Qian Zhang, Guoping Liu, Jibin Liu, Mu Yang, Juan Fu, Guodi Liu, Dehua Li, Zhangjie Gu, Linsong Zhang, Yingjiao Pan, Xingbing Cui, Lu Wang, Lixin Zhang, and Xiaoli Tian

Fig S1



Supplemental Figure1. The cytotoxicity of MSLN-CAR-T cells against solid tumor cell lines was analyzed by RTCA assay. The red arrow represents the time point of effector cell addition.