

Supplementary Appendix

This appendix has been provided by the authors to give readers additional information about their work.

Supplement to: Blumenthal KG, Freeman EE, Saff RR, et al. Delayed large local reactions to mRNA-1273 vaccine against SARS-CoV-2. *N Engl J Med*. DOI: 10.1056/NEJMc2102131

Supplementary Appendix

Table of Contents

Fig. S1: Skin biopsy results of Dose 1 Moderna large local reaction	2
---	---

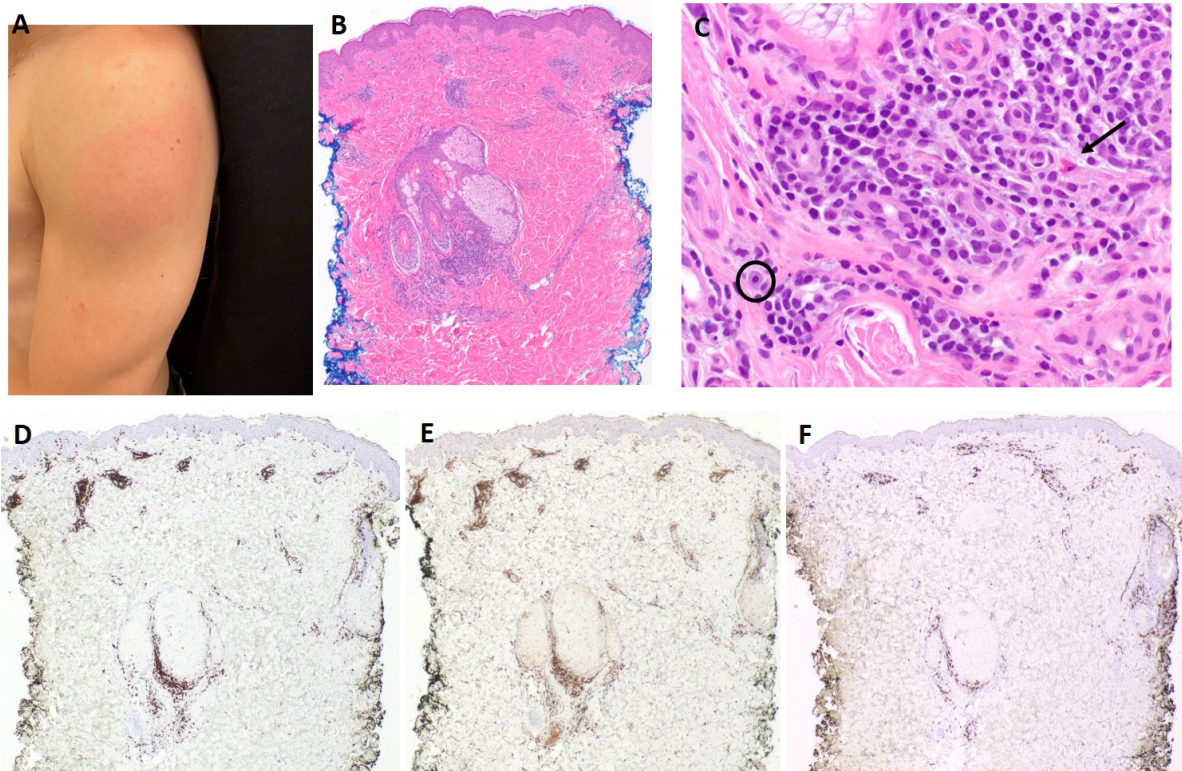


Figure legend. Skin biopsy results of Dose 1 Moderna large local reaction

A 27-year old Caucasian male developed an erythematous plaque at the site of Moderna vaccine inoculation, 7 days after injection of Dose 1. A skin punch biopsy was taken. (A) Clinical appearance on day 9 following first injection. (B) Hematoxylin and eosin preparation from the skin punch biopsy shows superficial perivascular and perifollicular lymphocytic infiltrate, (C) with rare eosinophils (arrow) and scattered mast cells (circle). Immunohistochemistry was performed to evaluate the inflammatory infiltrate and reveals predominantly CD3+ T cells with sparse exocytosis (D) and few, scattered CD20+ B cells (not shown). The T cell population is composed of a mixture of CD4+ (E) and CD8+ (F) cells, in a normal ratio of ~2-3:1. The biopsy findings represent a delayed-type hypersensitivity reaction.