

Supporting information for:

**Crystal structures of  $\gamma$ -glutamylmethylamide synthetase provide insight into bacterial metabolism of oceanic monomethylamine**

Ning Wang, Xiu-Lan Chen, Chao Gao, Ming Peng, Peng Wang, Na Zhang, Fuchuan Li, Gui-Peng Yang, Qing-Tao Shen, Shengying Li, Yin Chen, Yu-Zhong Zhang, Chun-Yang Li\*

\*Corresponding author: Chun-Yang Li, lcy@ouc.edu.cn

**This file includes:**

Figs. S1 to S2

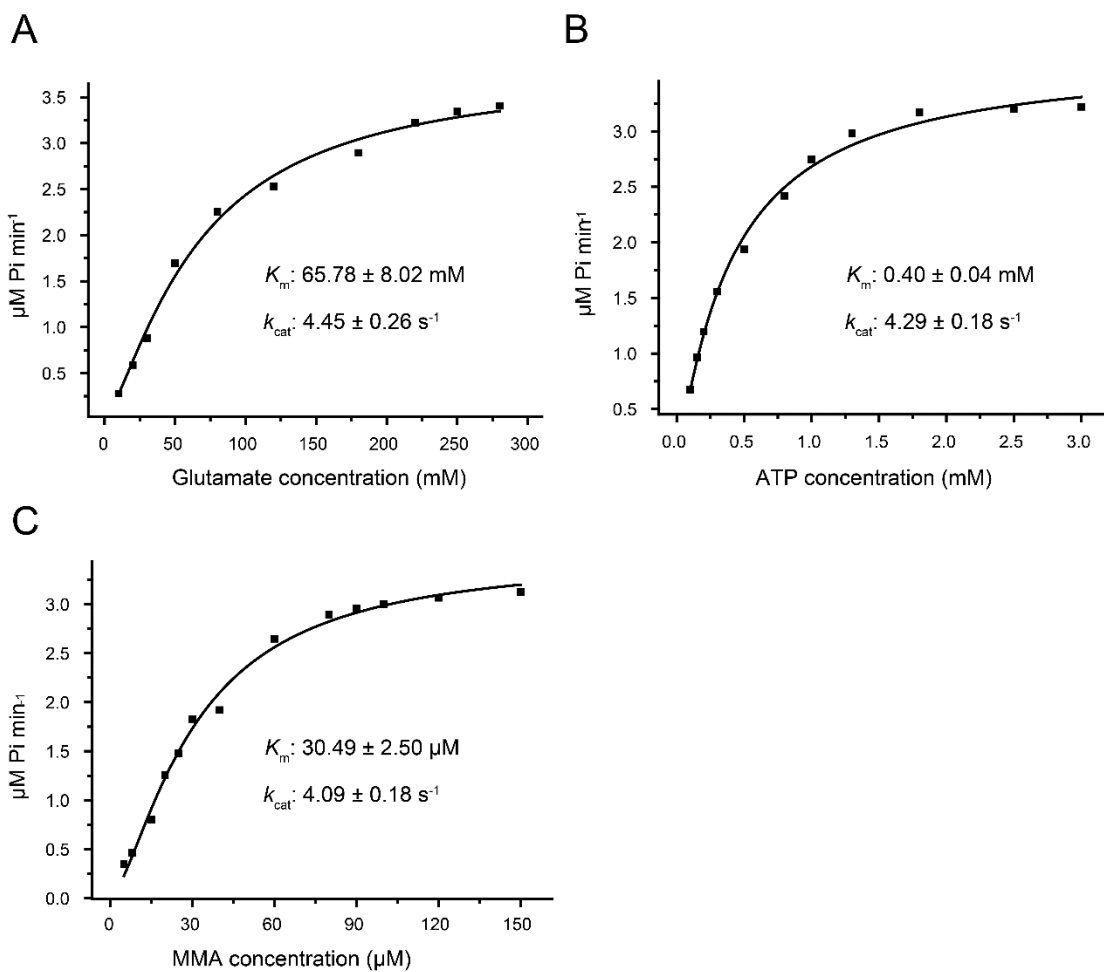


Fig. S1. Kinetic parameters of recombinant *RhGmaS* without His-tag. A. Kinetic parameters of *RhGmaS* for glutamate. B. Kinetic parameters of *RhGmaS* for ATP. C. Kinetic parameters of *RhGmaS* for MMA.

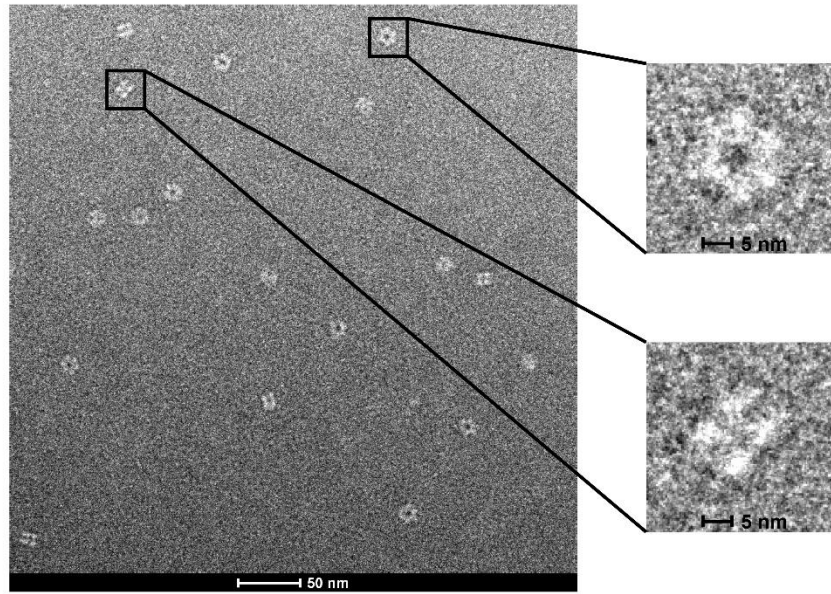


Fig. S2. The negative staining electron micrograph of *RhGmaS* without his-tag.