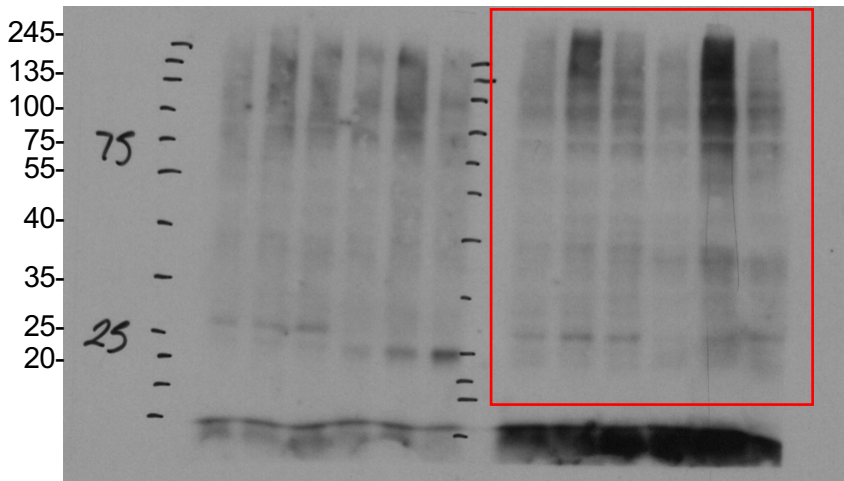


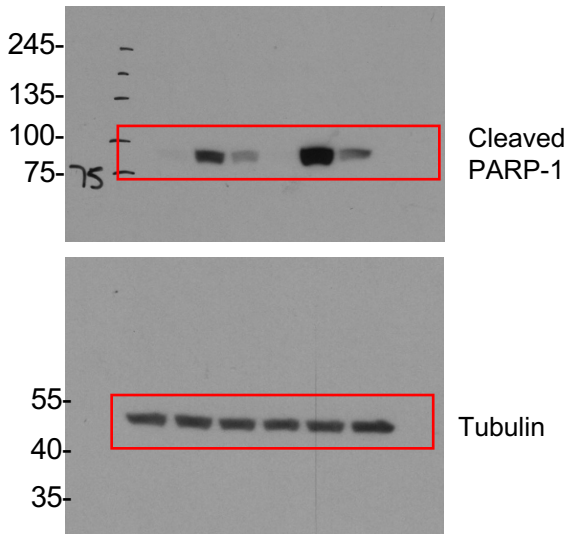
1C



MG132:	-	+	-	-	+	-
Bafilomycin:	-	-	+	-	-	+
	<hr/>			<hr/>		
	SC			shHRI		

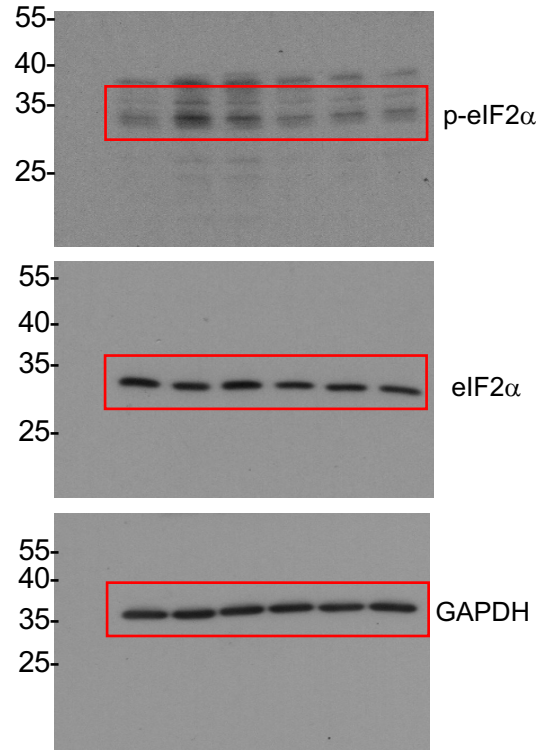
Source Data Figure 1

2A



MG132:	-	+	-	-	+	-
Bafilomycin:	-	-	+	-	-	+
	<hr/>			<hr/>		
	SC			shHRI		

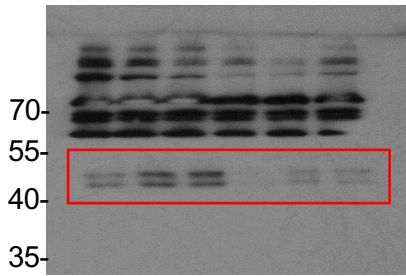
2B



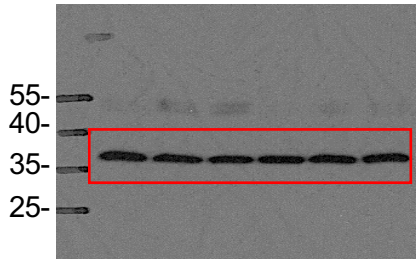
MG132:	-	+	-	-	+	-
Bafilomycin:	-	-	+	-	-	+
	<hr/>			<hr/>		
	SC			shHRI		

Source Data Figure 2

2C



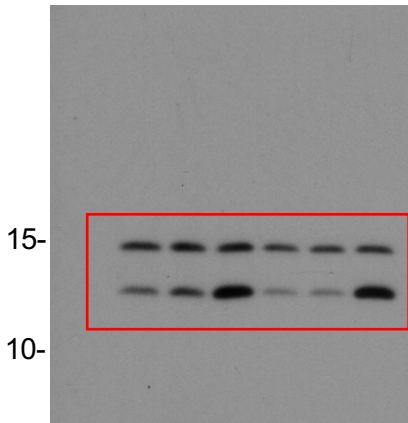
ATF4



GAPDH

MG132:	-	+	-	-	+	-
Bafilomycin:	-	-	+	-	-	+
	SC			shHRI		

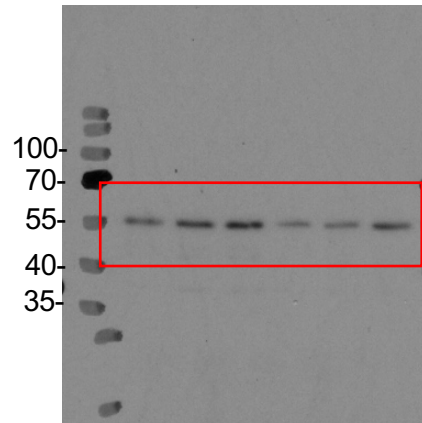
2D



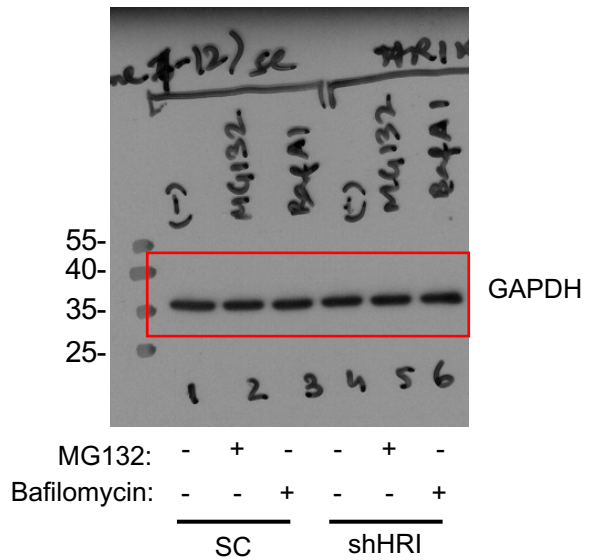
LC3 A/B-I

LC3 A/B-II

MG132:	-	+	-	-	+	-
Bafilomycin:	-	-	+	-	-	+
	SC			shHRI		



p62

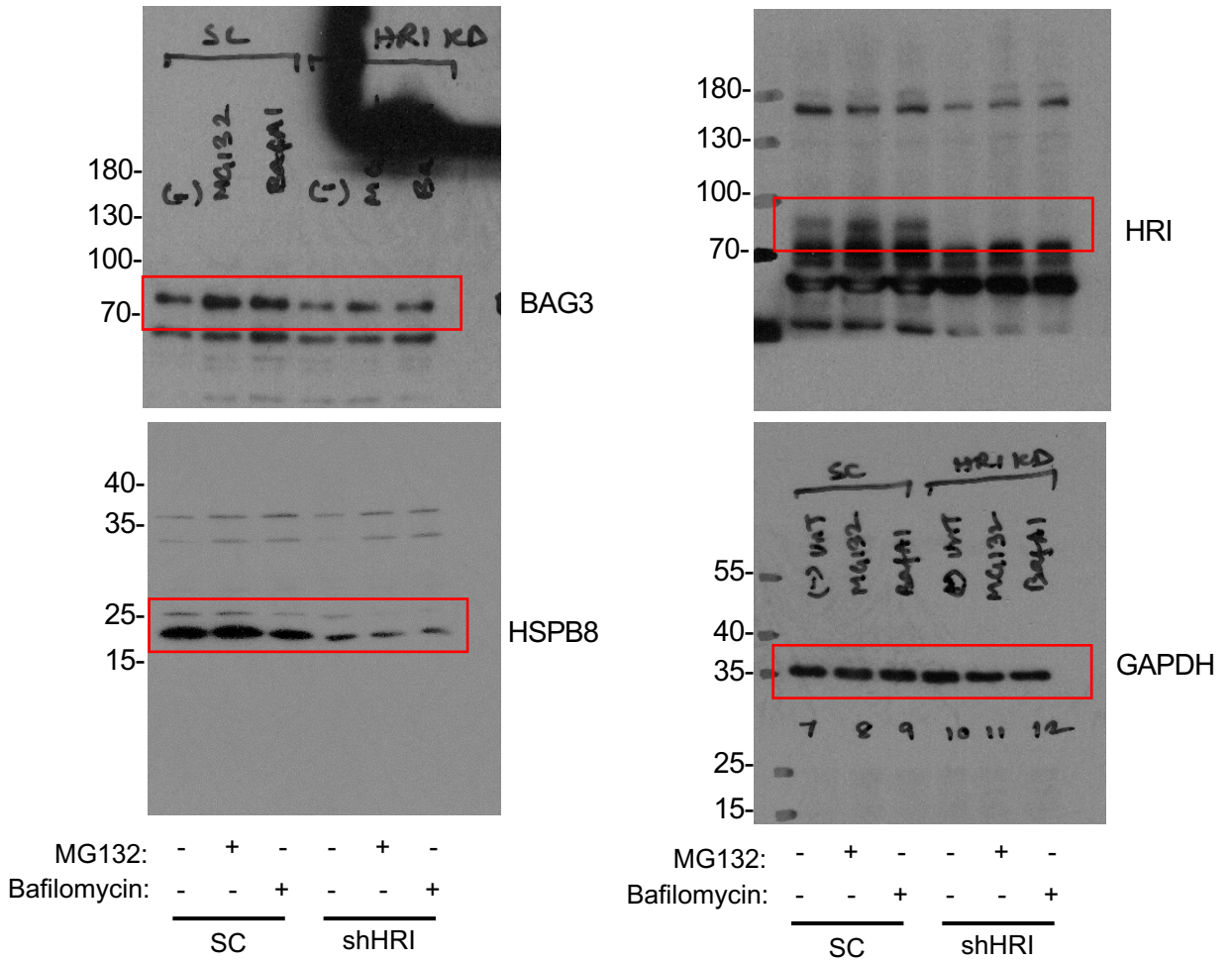


GAPDH

MG132:	-	+	-	-	+	-
Bafilomycin:	-	-	+	-	-	+
	SC			shHRI		

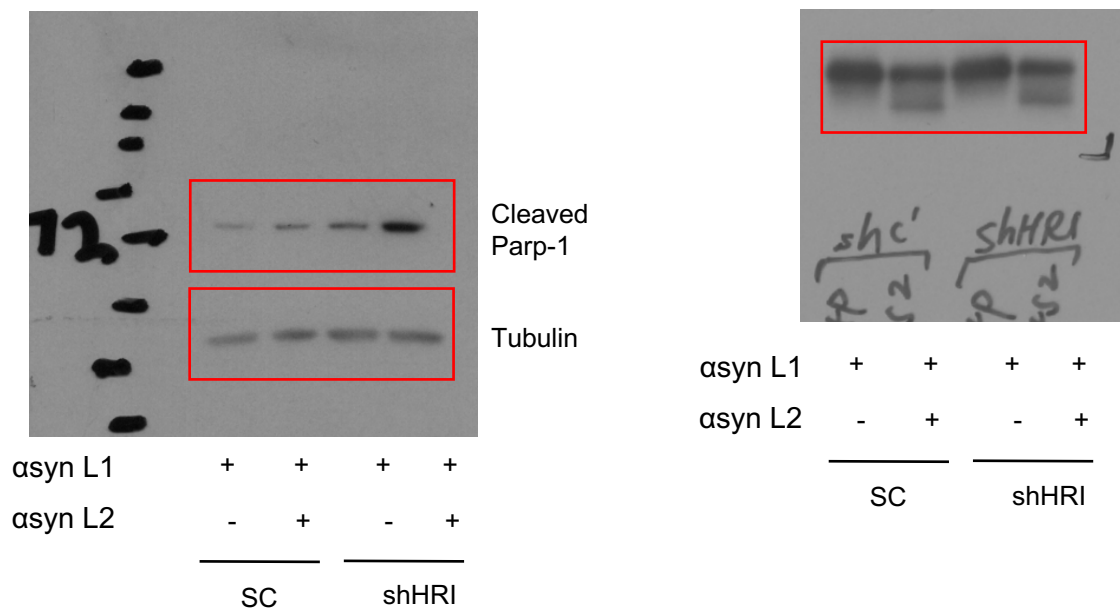
Source Data Figure 2 contd.

3A

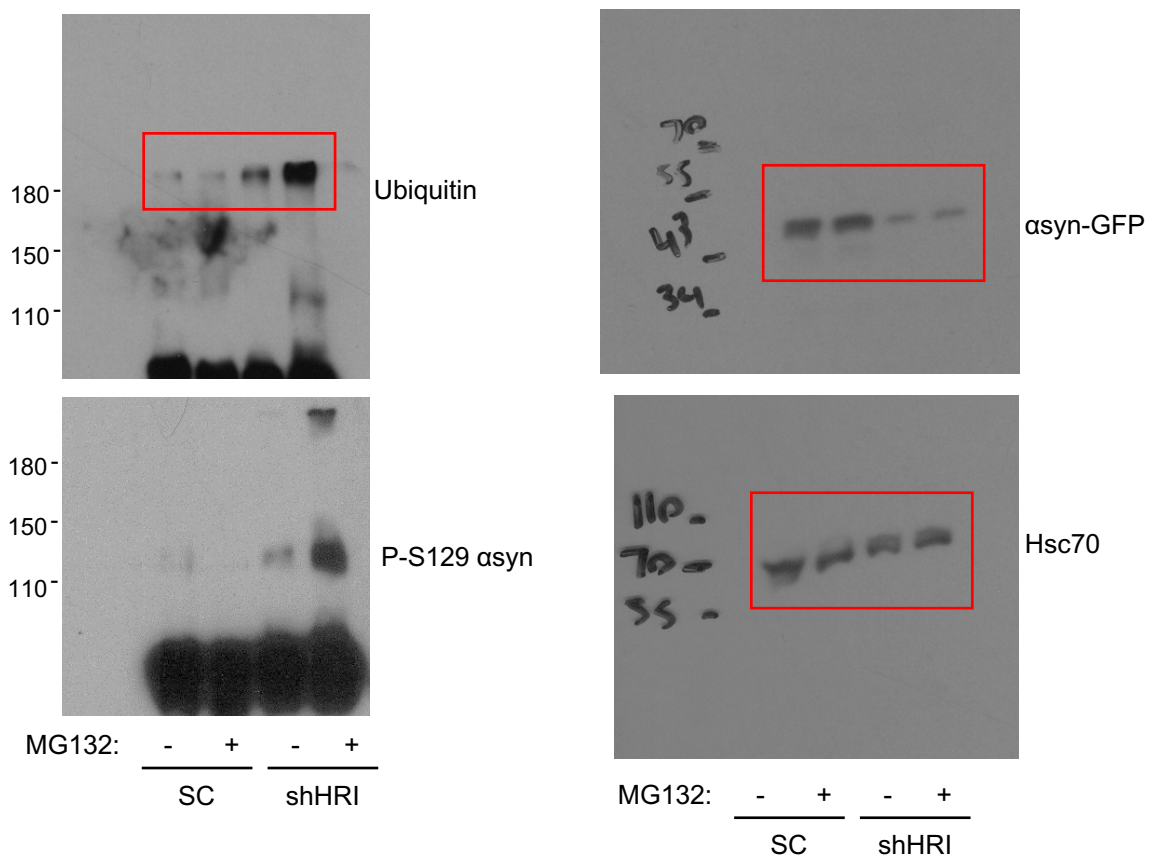


Source Data Figure 3

4B

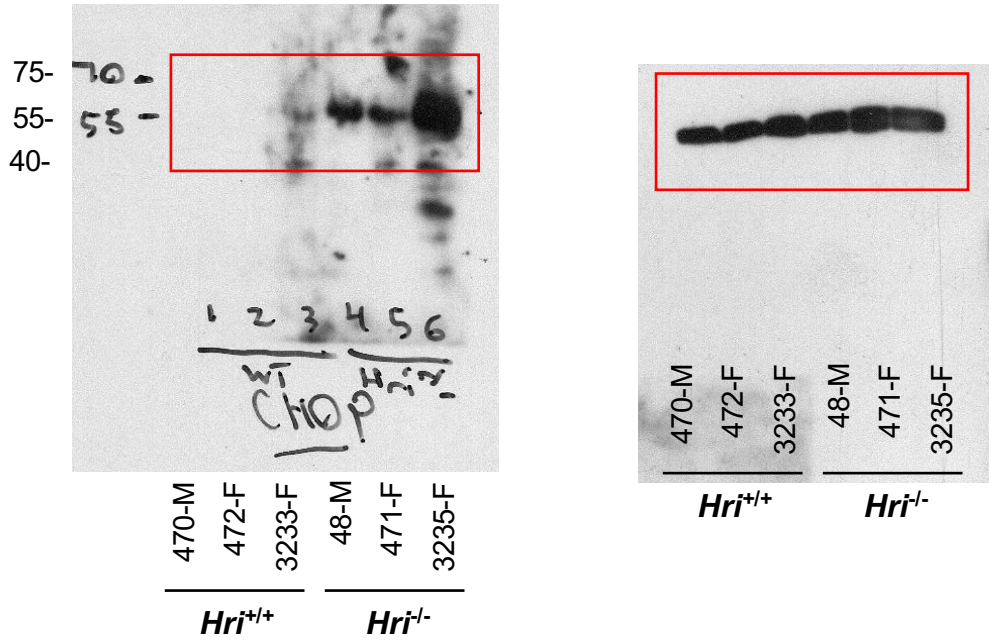


4C



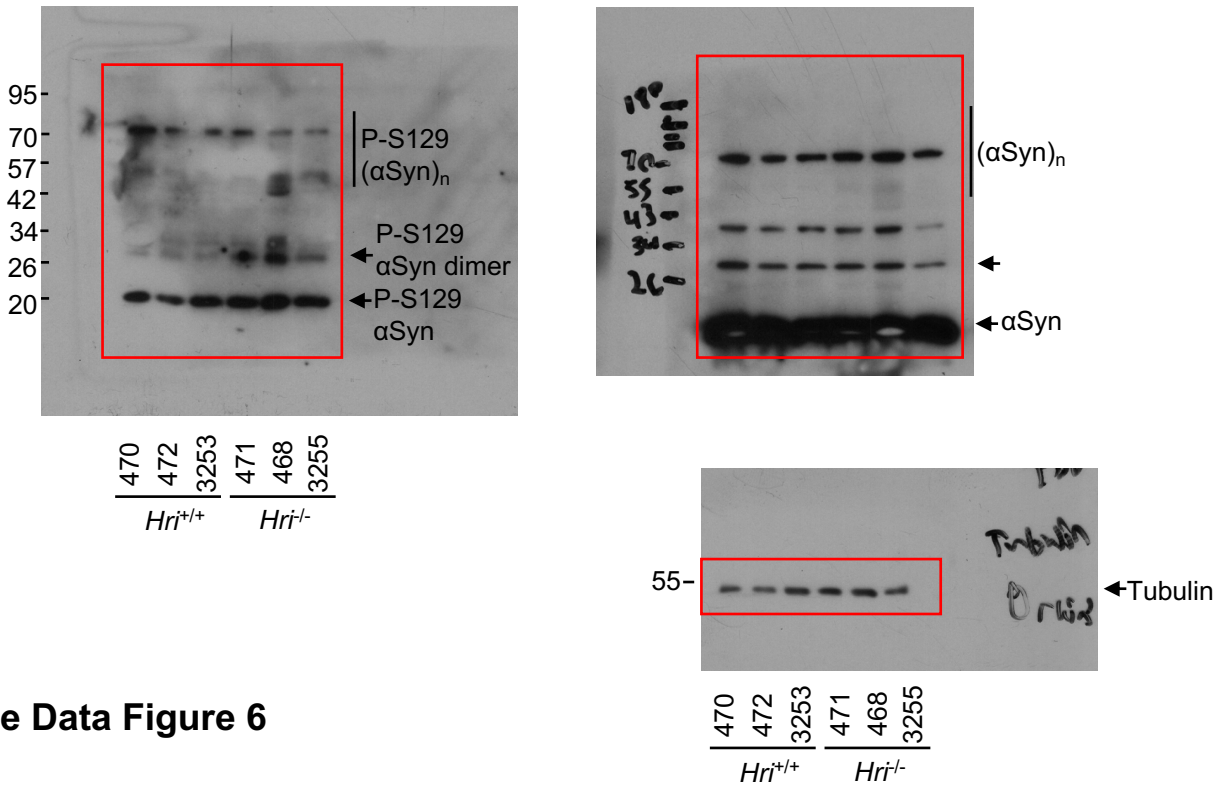
Source Data Figure 4

5G



Source Data Figure 5

6A



Source Data Figure 6