

## **Supporting Information**

### **Overexpression of TopBP1, a canonical ATR/Chk1 activator, paradoxically hinders ATR/Chk1 activation in cancer**

Kang Liu, Joshua D. Graves, Fang-Tsyu Lin and Weei-Chin Lin

#### **Content:**

**Supporting Information Fig. S1.**

**Fig. S1. Modest depletion of TopBP1 in the cells highly expressing TopBP1 enhances S-phase checkpoint response to HU treatment.**

The BrdU incorporation assay was carried out as described in Fig. 6, except that MDA-MB468 cells were labeled with BrdU for 6 h and the incorporated BrdU was visualized and quantified under fluorescence microscope. Shown are means $\pm$ SD from six biological replicates. *P* values are calculated from a two-tailed *t* test. Representative images are shown in Fig. S1B and Fig. S1C.

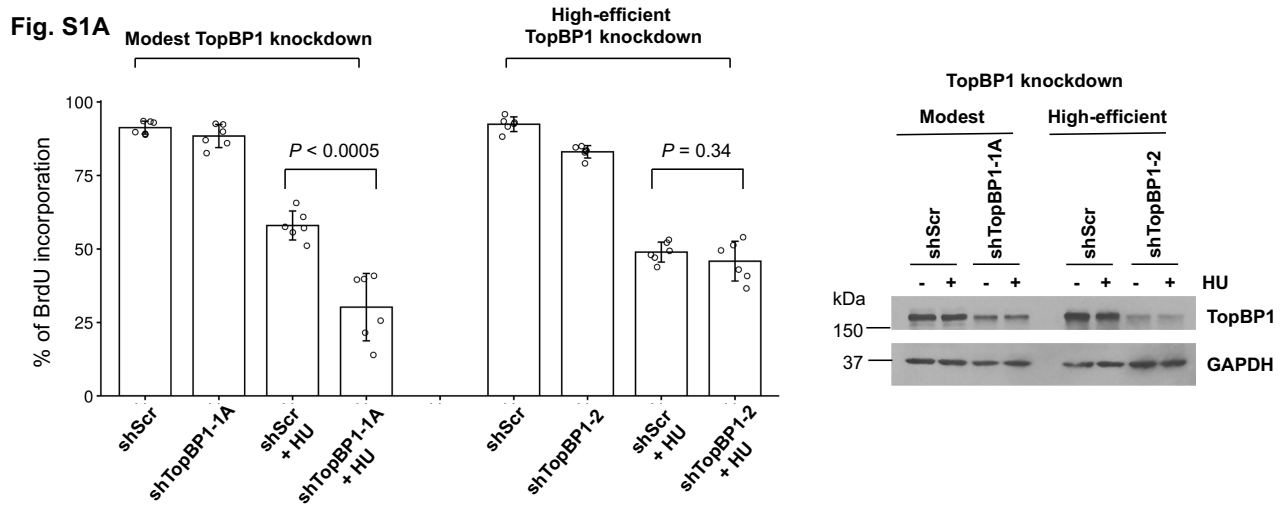


Fig. S1B

Modest TopBP1 knockdown

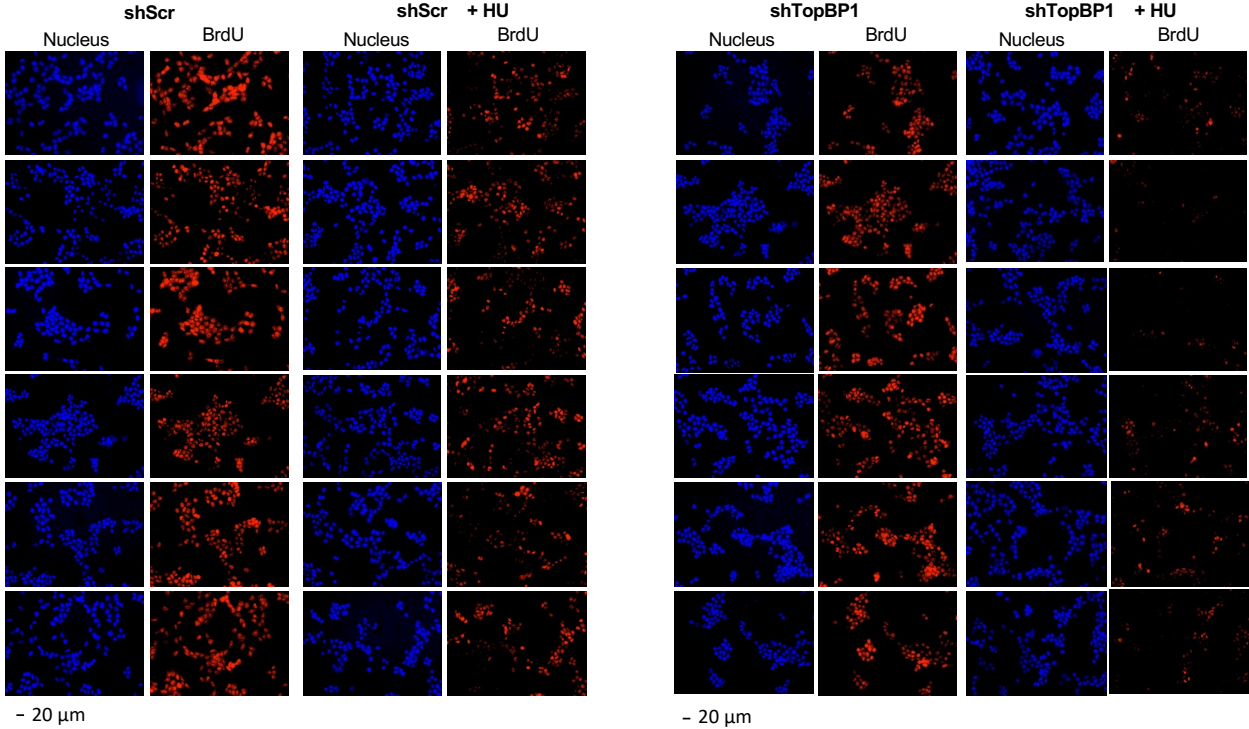


Fig. S1C

High-efficient TopBP1 knockdown

