

A Study on the Effect of Patient Characteristics, Geographical Utilization, and Patient Outcomes for Total Pancreatectomy Alone and Total Pancreatectomy With Islet Autotransplantation in Patients With Pancreatitis in the United States

SUPPLEMENTAL DIGITAL CONTENT

SUPPLEMENTAL TABLE 1. List of ICD9CM Codes Used for the Study, and Hierarchy* for Patient Selection

Diagnosis/Procedure	ICD-9-CM Codes	Variable Location
Total pancreatectomy	52.6	PR1-PR15
↓		
Islet autotransplantation	52.84	PR1-PR15
↓		
Chronic pancreatitis	577.1	DX1-DX25
↓		
Acute pancreatitis	577.0	DX1-DX25
Pancreatic neoplasm	156.2, 157, 157.0, 157.1, 157.2, 157.3, 157.8, 157.9	DX1-DX25
Pregnancy status	7923, 7965, V617, V6511, any diagnosis code starting with 63, 64, 65, 66, 670, 671, 672, 673, 674, 675, 676, 677, V22, V24, V27, V280, 282, V286, V616, V617, 753, 7530, 7531, 7532, 7533, 7534, 7535, 7536, 7537, any procedure code starting with 72, 73, 74, 750, 751, 752, 754, 755	DX2-DX25

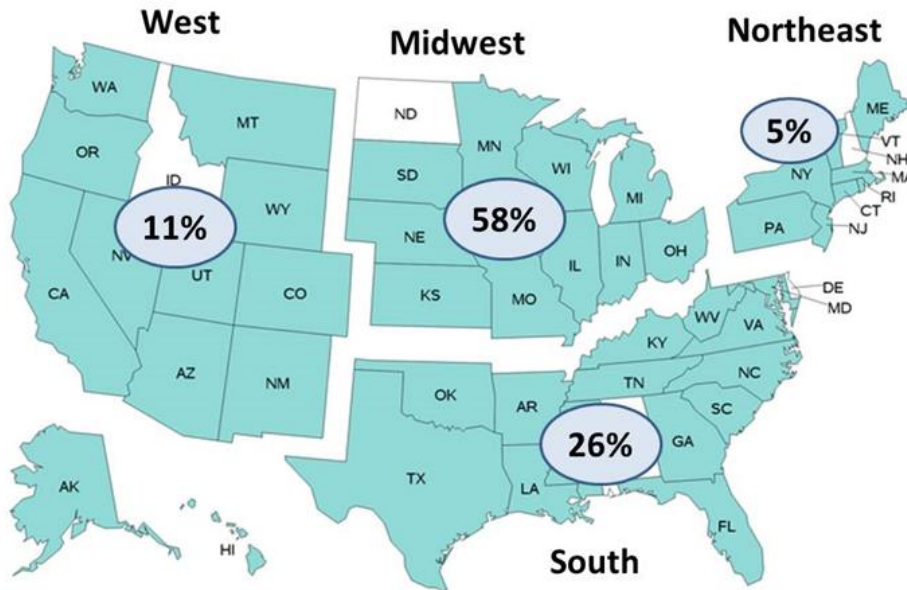
*See arrows.

SUPPLEMENTAL TABLE 2. Trend of Total Pancreatectomy Among all Patients With Chronic Pancreatitis During the Study Period

		2002	2003	2004	2005	2006	2007
TP	No	86,326	89,894	95,900	94,987	105,231	109,303
	Yes	97	23	53	43	136	52
% with TP		0.11	0.03	0.05	0.05	0.13	0.05
		2008	2009	2010	2011	2012	2013
TP	No	131,038	140,281	152,355	154,992	149,845	150,160
	Yes	310	166	272	219	220	240
% with TP		0.24	0.12	0.18	0.14	0.15	0.16

Cochran-Armitage test indicates a significant trend, $P < 0.001$.

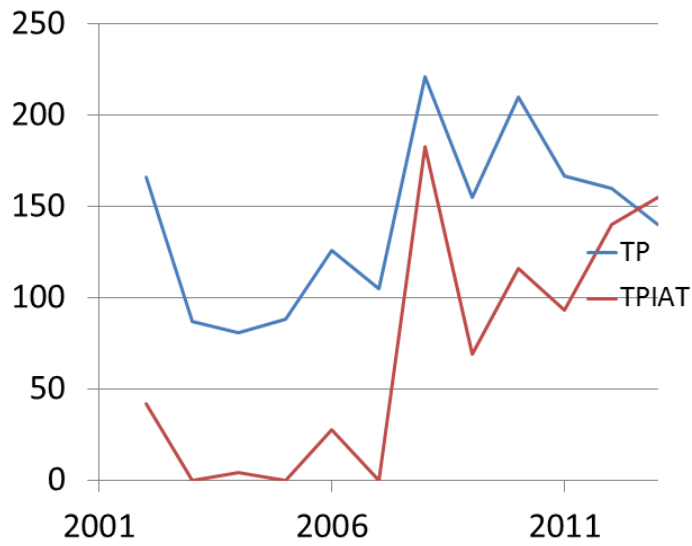
TP indicates total pancreatectomy.



SUPPLEMENTAL FIGURE 1. The map illustrates the distribution of TP and TPIAT in the United States according to census derived geographical zones. White shaded areas did not provide data. State information could have varied by year

SUPPLEMENTAL TABLE 3. Adjusted Length of Stay and Cost for Patients With any Type of Pancreatitis Who Had TP Alone Compared to TPIAT		
	Adjusted Coefficient (95% CI)	P
Length of stay, TP 24 d; TPIAT 15 d	9.06 (4.51–13.60)	<0.001
Costs, \$US dollars	19,050 (2408–35,691)	0.025

TPIAT was cost reference.
CI indicates confidence interval; TP, total pancreatectomy; TPIAT, total pancreatectomy and islet autotransplantation.



SUPPLEMENTAL FIGURE 2. Graph showing the trend of TP and TPIAT over the study period. There is a significant trend using Cochran-Armitage tests $P < 0.001$.