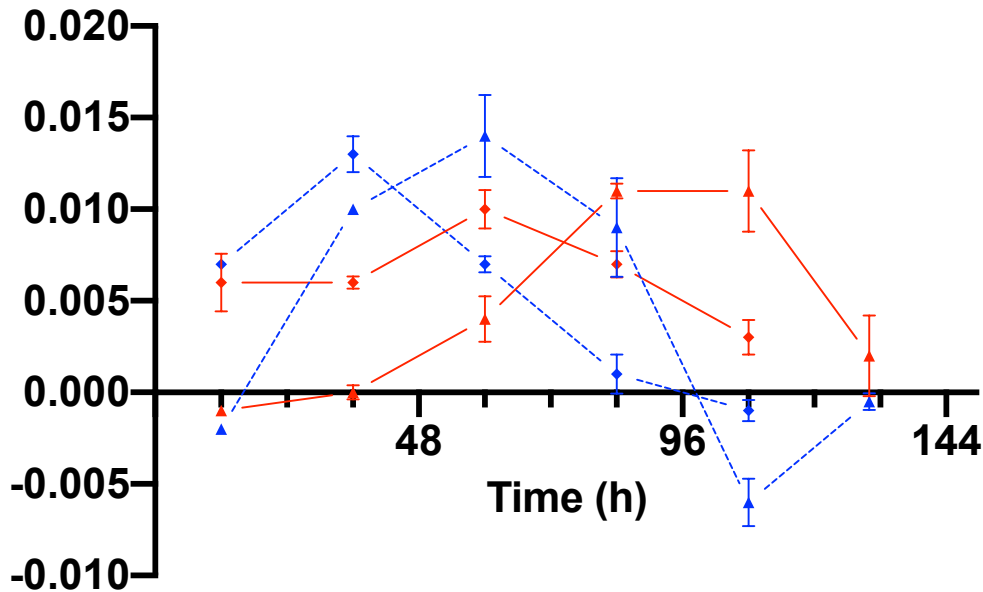


Specific lipid production rate (g/(g<sub>dcw</sub>\*h))



—▲— 55 g/L glycerol *R. toruloides* CBS 14

- -▲- - 55 g/L glycerol + 10% hemicellulose hydrolysate *R. toruloides* CBS 14

—◆— 55 g/L glycerol *R. glutinis* 3044

- -◆- - 55 g/L glycerol + 10% hemicellulose hydrolysate *R. glutinis* 3044