

Supplementary Table S1

Cell line	Origin	p53 status	
Cal-33	Squamous Cell Carcinoma (Tongue)	Established from the surgically removed fragment of a tongue lesion from a 69-year-old man with moderately differentiated squamous cell carcinoma of the tongue in 1983 (prior to therapy). DOI: 10.1016/0277-5379(88)90335-5	Mut. (R175H)
SCC-9	Squamous Cell Carcinoma (Tongue)	Established from a tongue squamous cell carcinoma of a 25-year-old caucasian man	c.822_853del32
SCC-131	Squamous Cell Carcinoma (oral cavity)	Established from an oral squamous cell carcinoma of a 73-year-old caucasian man	Tyr205Ser (c.614A>C)
FaDu	Squamous Cell Carcinoma (pharynx)	Established in 1968 from a punch biopsy of an hypopharyngeal tumor removed from a 56 year old caucasian man	c.376-1G>A and c.743G>T
SCC-263	Squamous Cell Carcinoma (oral cavity)	obtained from a biopsy from a head and neck tumor https://doi.org/10.1016/S0167-8140(01)00498-4	R306X in exon 8 (CGA.TGA) and a 32-bp deletion in exon 7 (del 704–735)
SCC-25	Squamous Cell Carcinoma (tongue)	Established from a tumor removed from a 70 year old caucasian man.	c.625_626delA G

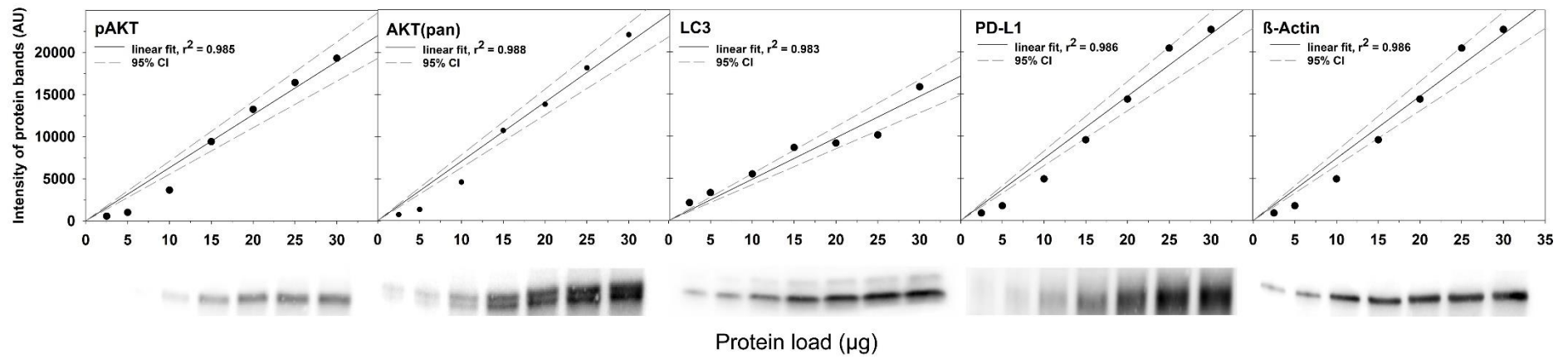
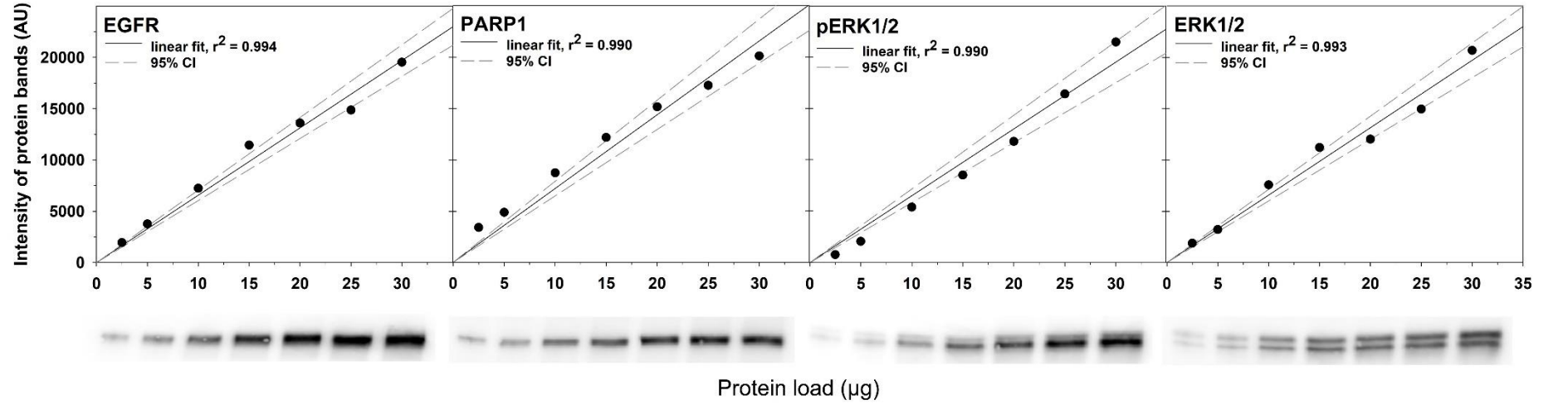
Supplementary Table S2

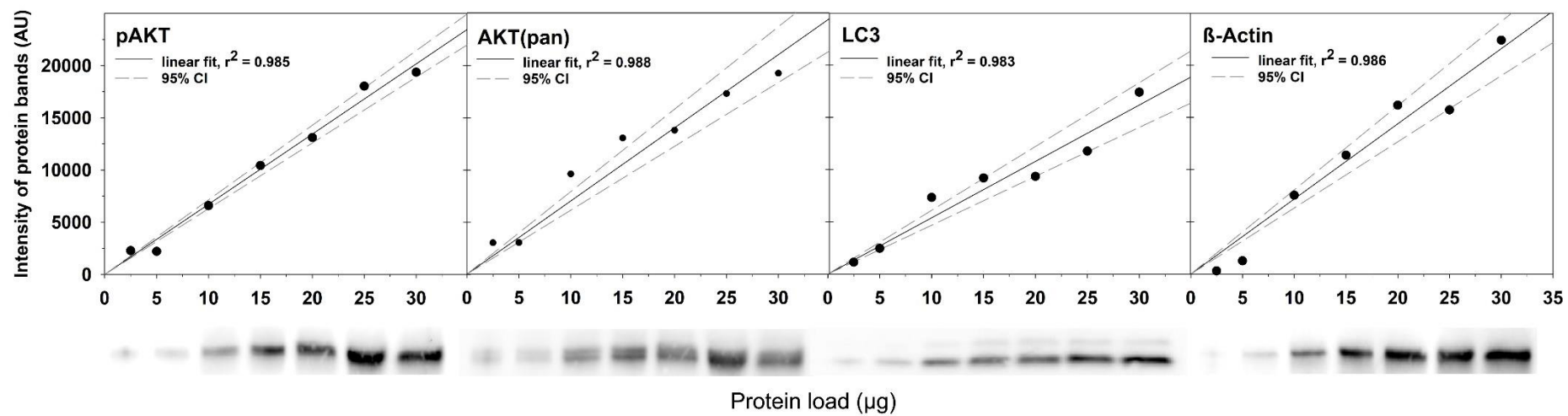
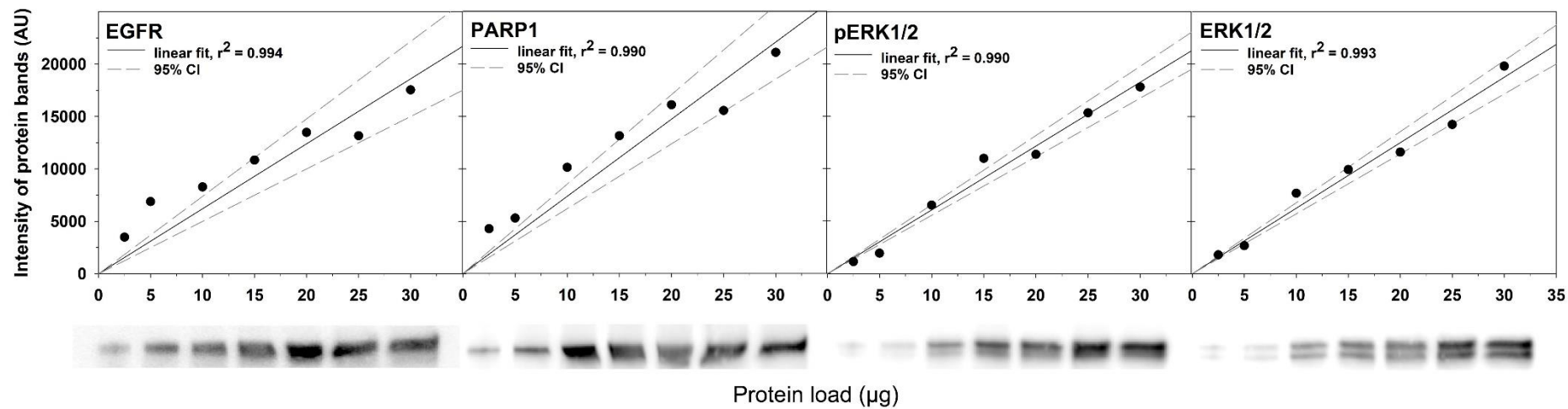
Antigen	Primary AB (Cat.-No., clone, species, dilution, incubation)	Primary AB supplier	Fluorochrome (Cat.-No.)	Staining pattern
EGFR	4267, D38B1, rabbit, 1:50, overnight at 4°C	Cell Signaling Technology, Danvers, MA (USA)	Alexa Fluor 647 Tyramide (T20951)	Membranous
CA IX	ab108351, EPR4151[2], rabbit, 1 : 200, 1 h at 28 - 30°C	Epitomics, Burlingame, CA (USA)	Alexa Fluor 488 Tyramide (T20948)	Membranous
CD34	ab81289, EP373Y, rabbit, 1:150, for 1 h at 24°C	Abcam, Cambridge (UK)	Alexa Fluor 546 Tyramide (T20923)	Membranous

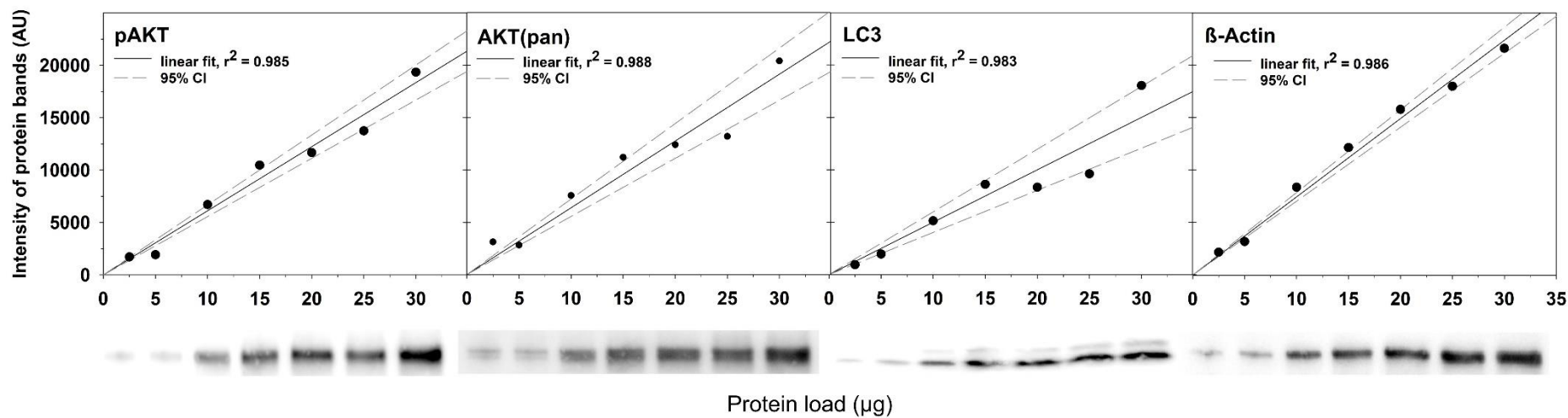
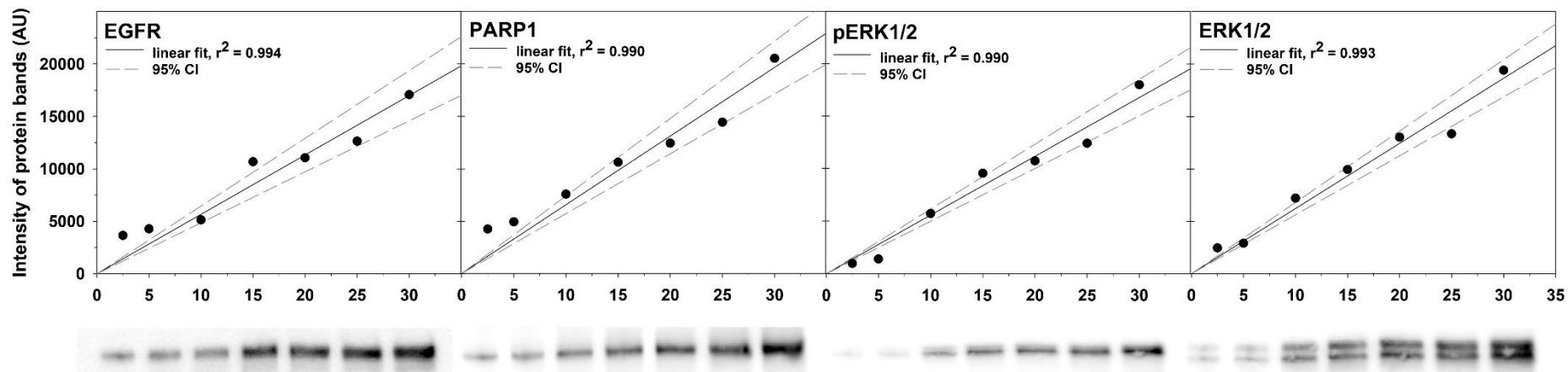
Supplementary Figure S1

A

SCC-9



B**FaDu**

C**SCC-131**

Supplementary Figure S2

